

# 49

## MONROE STREET

LOWER EAST SIDE, NYC

Between Market Street & Mechanics Alley

BAR/RESTAURANT FOR LEASE



### APPROXIMATE SIZE

2,500 SF

### ASKING RENT

\$18,000/Month

### POSSESSION

Immediate

### TERM

Negotiable

### FRONTAGE

20 FT

### COMMENTS

- Turn-key bar/restaurant opportunity
- Former liquor license
- Vent shaft and 2 skylights
- 600 AMPs of power
- ADA-compliant bathroom
- 2 means of egress
- No key-money

### NEIGHBORS

Golden Diner • Banh by Lauren • Matcha 108 •  
The Table Church NYC • Cellar 36 • Pho Ga Vang •  
Long Story Short • Dreamers Coffee House •  
Sun Hing Lung • Pecking House Chinatown

### TRANSPORTATION

F

### STEPHEN LIGAMBI

Senior Associate

212.468.5985

sligambi@meridiancapital.com

### YIANNI THERMOS

Associate

212.468.5939

ythermos@meridiancapital.com



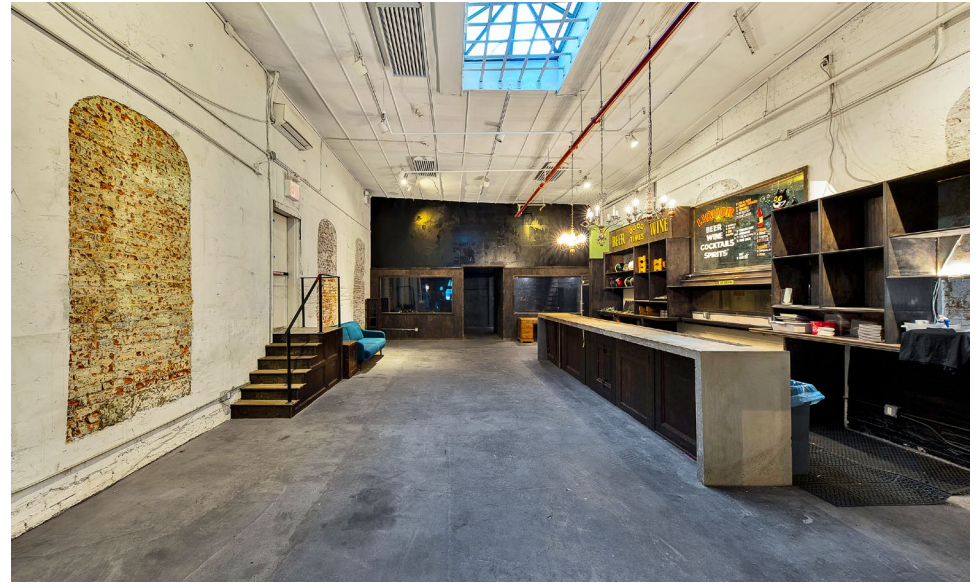
**MERIDIAN**  
RETAIL LEASING

All information supplied is from sources deemed reliable and is furnished subject to errors, omissions, modifications, removal of the listing from sale or lease, and to any listing conditions, including the rates and manner of payment of commissions for particular offerings imposed by Meridian Capital Group. This information may include estimates and projections prepared by Meridian Capital Group with respect to future events, and these future events may or may not actually occur. Such estimates and projections reflect various assumptions concerning anticipated results. While Meridian Capital Group believes these assumptions are reasonable, there can be no assurance that any of these estimates and projections will be correct. Therefore, actual results may vary materially from these estimates and projections. Any square footage dimensions set forth are approximate.

# 49 MONROE STREET

LOWER EAST SIDE, NYC | Between Market Street and Mechanics Alley

BAR/RESTAURANT FOR LEASE



INTERIOR

## STEPHEN LIGAMBI

Senior Associate  
212.468.5985  
sligambi@meridiancapital.com

## YIANNI THERMOS

Associate  
212.468.5939  
ythermos@meridiancapital.com



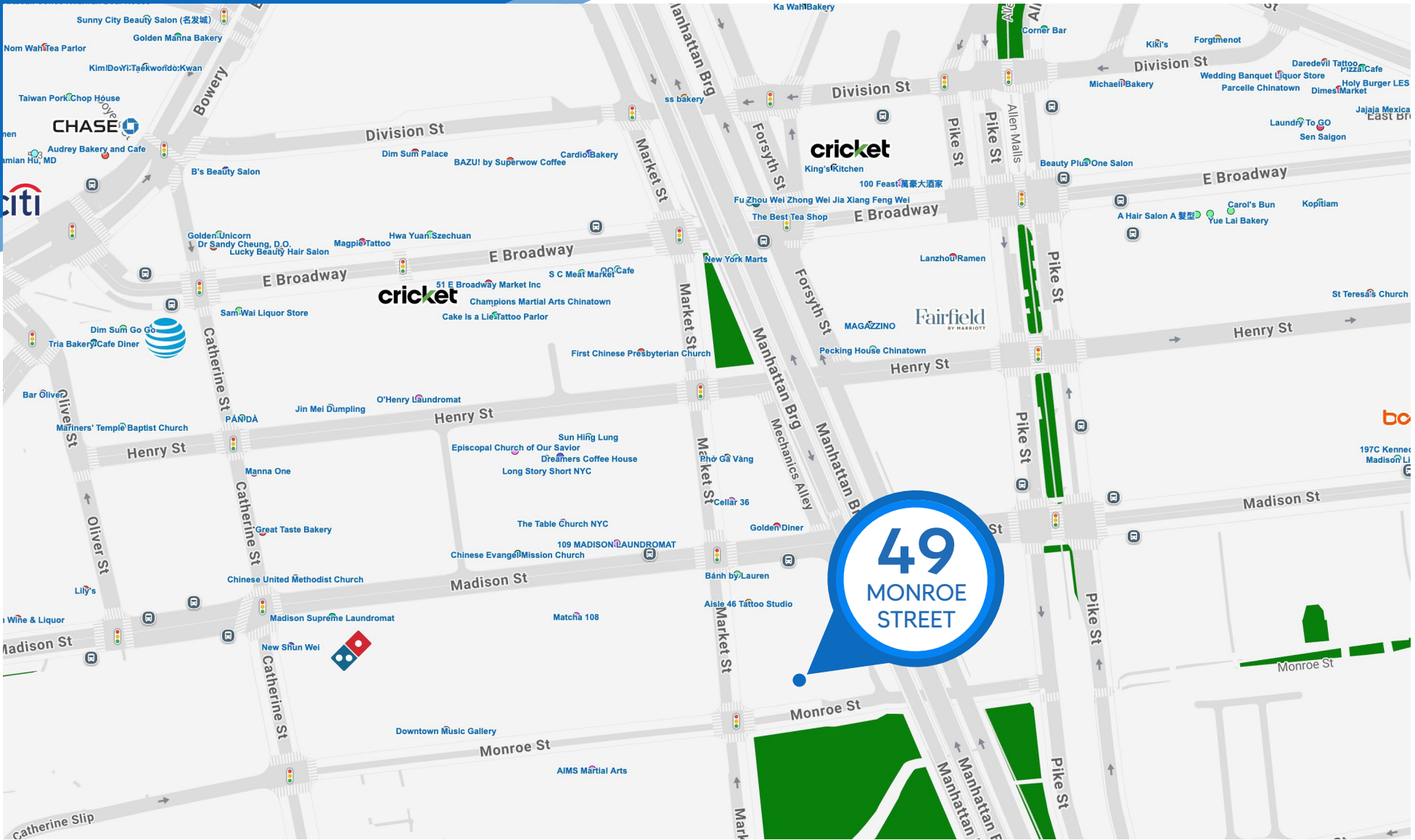
**MERIDIAN**  
RETAIL LEASING

All information supplied is from sources deemed reliable and is furnished subject to errors, omissions, modifications, removal of the listing from sale or lease, and to any listing conditions, including the rates and manner of payment of commissions for particular offerings imposed by Meridian Capital Group. This information may include estimates and projections prepared by Meridian Capital Group with respect to future events, and these future events may or may not actually occur. Such estimates and projections reflect various assumptions concerning anticipated results. While Meridian Capital Group believes these assumptions are reasonable, there can be no assurance that any of these estimates and projections will be correct. Therefore, actual results may vary materially from these estimates and projections. Any square footage dimensions set forth are approximate.

# 49 MONROE STREET

LOWER EAST SIDE, NYC | Between Market Street and Mechanics Alley

BAR/RESTAURANT FOR LEASE



NEIGHBORS

STEPHEN LIGAMBI

Senior Associate  
212.468.5985

sligambi@meridiancapital.com

YIANNI THERMOS

Associate  
212.468.5939

ythermos@meridiancapital.com



**MERIDIAN**  
RETAIL LEASING

All information supplied is from sources deemed reliable and is furnished subject to errors, omissions, modifications, removal of the listing from sale or lease, and to any listing conditions, including the rates and manner of payment of commissions for particular offerings imposed by Meridian Capital Group. This information may include estimates and projections prepared by Meridian Capital Group with respect to future events, and these future events may or may not actually occur. Such estimates and projections reflect various assumptions concerning anticipated results. While Meridian Capital Group believes these assumptions are reasonable, there can be no assurance that any of these estimates and projections will be correct. Therefore, actual results may vary materially from these estimates and projections. Any square footage dimensions set forth are approximate.