

279

CHURCH STREET
TRIBECA, NYC

Between White & Franklin Streets



APPROXIMATE SIZE

Ground Floor: 1,875 SF

ASKING RENT

\$13,000/Month

POSSESSION

Immediate

TERM

10-15 Years

FRONTAGE

20 FT

COMMENTS

- Built out café
- White-box condition
- High ceilings
- Fully equipped with gas
- No basement or kitchen
- Directly across from the Roxy Hotel

NEIGHBORS

Zadig & Voltaire • Paros • Añejo Tribeca • Django • Roxy Hotel • Frenchette • Grand Eleven • Tracy Anderson • Eulalie • Filé Gumbo Bar • illesteva • Two Hands • Billy's Bakery

TRANSPORTATION

1 2 3 4 5 6 A C E J Z

PROPERTY INFORMATION

JAMES FAMULARO

President
646.658.7373
jfamularo@meridiancapital.com

JACOB MAYER

Director
212.468.5926
jmayer@meridiancapital.com



MERIDIAN
RETAIL LEASING

279 CHURCH STREET

TRIBECA, NYC | Between White and Franklin Streets

RETAIL FOR LEASE



INTERIOR

JAMES FAMULARO

President
646.658.7373
jfamularo@meridiancapital.com

JACOB MAYER

Director
212.468.5926
jmayer@meridiancapital.com



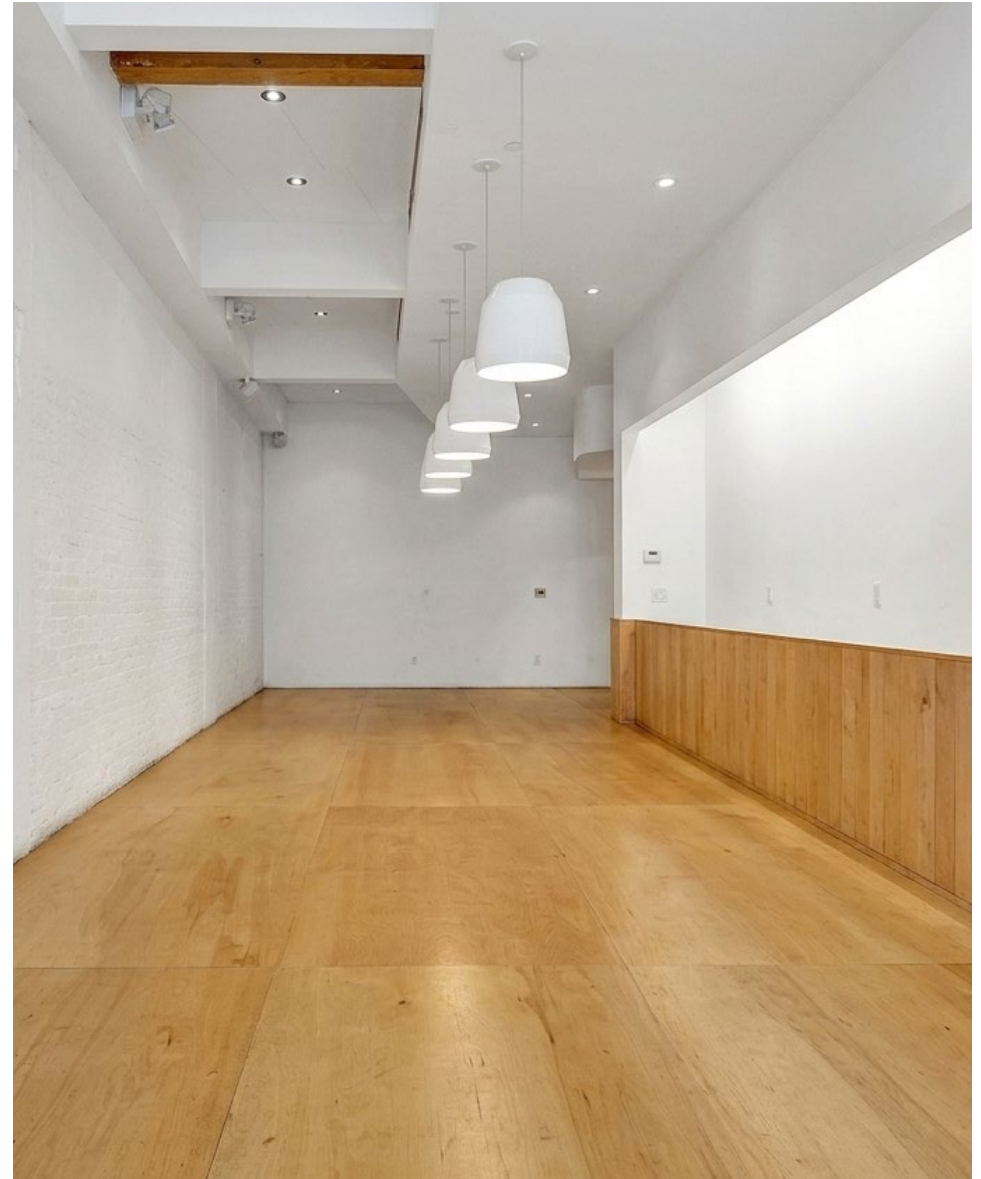
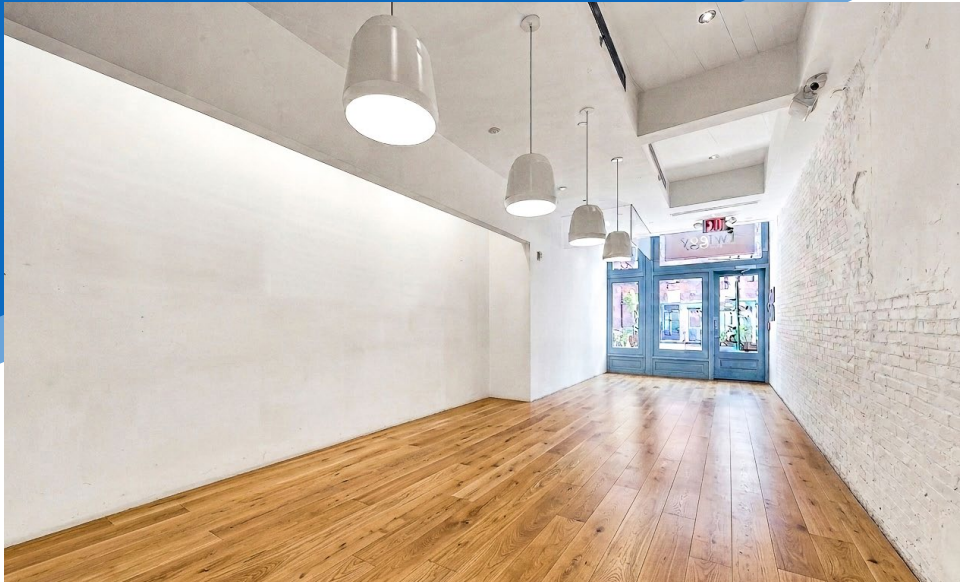
MERIDIAN
RETAIL LEASING

All information supplied is from sources deemed reliable and is furnished subject to errors, omissions, modifications, removal of the listing from sale or lease, and to any listing conditions, including the rates and manner of payment of commissions for particular offerings imposed by Meridian Capital Group. This information may include estimates and projections prepared by Meridian Capital Group with respect to future events, and these future events may or may not actually occur. Such estimates and projections reflect various assumptions concerning anticipated results. While Meridian Capital Group believes these assumptions are reasonable, there can be no assurance that any of these estimates and projections will be correct. Therefore, actual results may vary materially from these estimates and projections. Any square footage dimensions set forth are approximate.

279 CHURCH STREET

TRIBECA, NYC | Between White and Franklin Streets

RETAIL FOR LEASE



INTERIOR

JAMES FAMULARO

President
646.658.7373
jfamularo@meridiancapital.com

JACOB MAYER

Director
212.468.5926
jmayer@meridiancapital.com



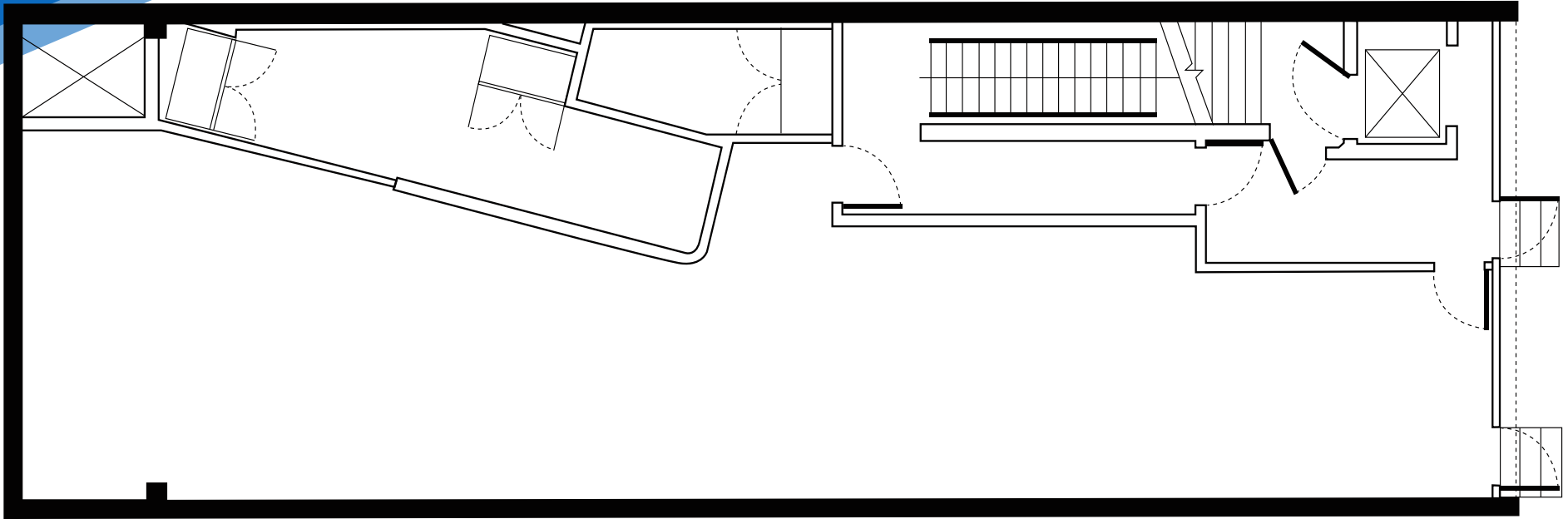
MERIDIAN
RETAIL LEASING

All information supplied is from sources deemed reliable and is furnished subject to errors, omissions, modifications, removal of the listing from sale or lease, and to any listing conditions, including the rates and manner of payment of commissions for particular offerings imposed by Meridian Capital Group. This information may include estimates and projections prepared by Meridian Capital Group with respect to future events, and these future events may or may not actually occur. Such estimates and projections reflect various assumptions concerning anticipated results. While Meridian Capital Group believes these assumptions are reasonable, there can be no assurance that any of these estimates and projections will be correct. Therefore, actual results may vary materially from these estimates and projections. Any square footage dimensions set forth are approximate.

279 CHURCH STREET

TRIBECA, NYC | Between White and Franklin Streets

RETAIL FOR LEASE



FLOOR PLAN

JAMES FAMULARO

President
646.658.7373
jfamularo@meridiancapital.com

JACOB MAYER

Director
212.468.5926
jmayer@meridiancapital.com



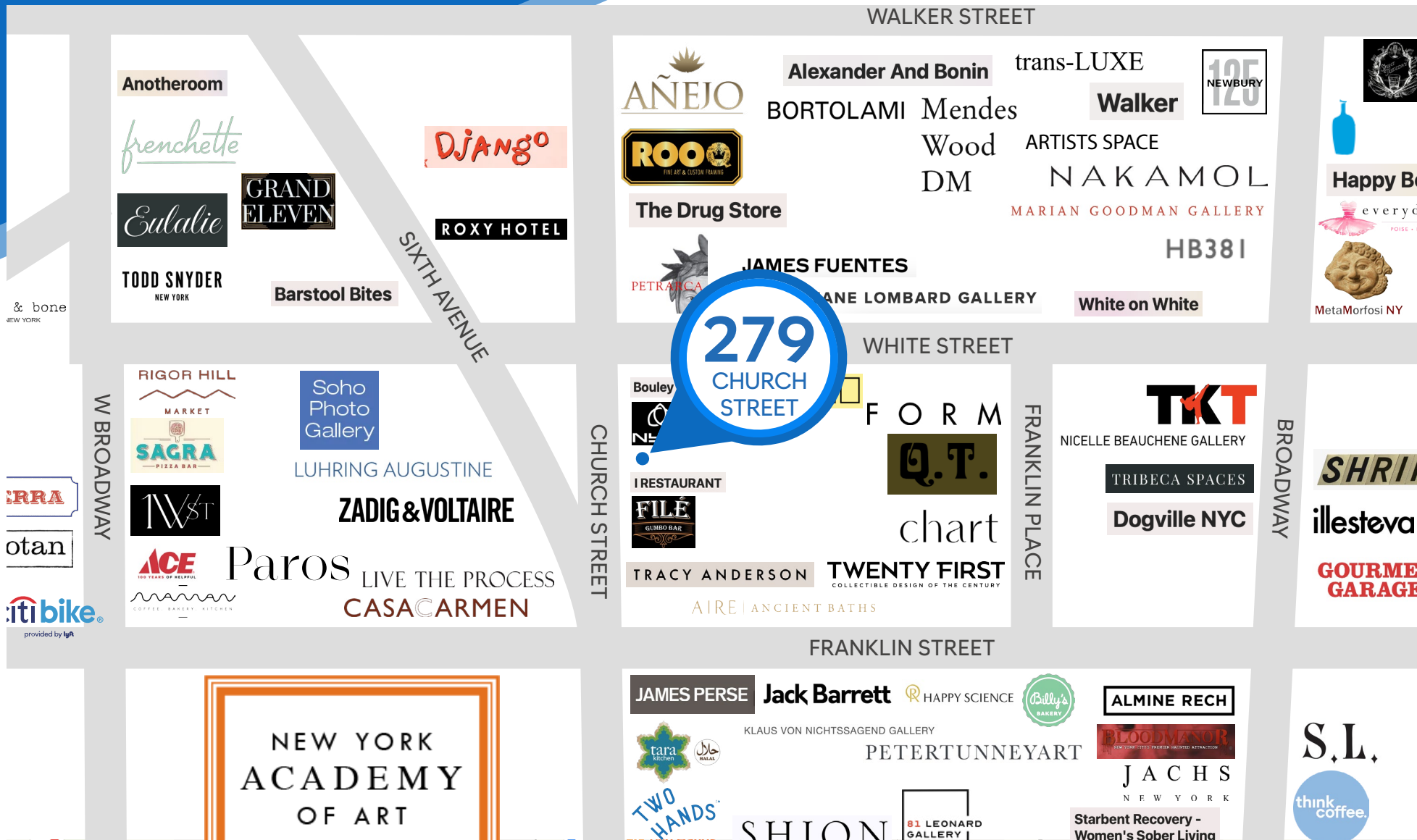
MERIDIAN
RETAIL LEASING

All information supplied is from sources deemed reliable and is furnished subject to errors, omissions, modifications, removal of the listing from sale or lease, and to any listing conditions, including the rates and manner of payment of commissions for particular offerings imposed by Meridian Capital Group. This information may include estimates and projections prepared by Meridian Capital Group with respect to future events, and these future events may or may not actually occur. Such estimates and projections reflect various assumptions concerning anticipated results. While Meridian Capital Group believes these assumptions are reasonable, there can be no assurance that any of these estimates and projections will be correct. Therefore, actual results may vary materially from these estimates and projections. Any square footage dimensions set forth are approximate.

279 CHURCH STREET

TRIBECA, NYC | Between White and Franklin Streets

RETAIL FOR LEASE



NEIGHBORS

JAMES FAMULARO
 President
 646.658.7373
 jfamularo@meridiancapital.com

JACOB MAYER
 Director
 212.468.5926
 jmayer@meridiancapital.com



MERIDIAN
 RETAIL LEASING

All information supplied is from sources deemed reliable and is furnished subject to errors, omissions, modifications, removal of the listing from sale or lease, and to any listing conditions, including the rates and manner of payment of commissions for particular offerings imposed by Meridian Capital Group. This information may include estimates and projections prepared by Meridian Capital Group with respect to future events, and these future events may or may not actually occur. Such estimates and projections reflect various assumptions concerning anticipated results. While Meridian Capital Group believes these assumptions are reasonable, there can be no assurance that any of these estimates and projections will be correct. Therefore, actual results may vary materially from these estimates and projections. Any square footage dimensions set forth are approximate.