

# 6

## CHARLES PLACE BUSHWICK, BROOKLYN

Off the Corner of Charles Place &  
Willoughby Avenue

INDUSTRIAL/RETAIL FOR LEASE

**APPROXIMATE SIZE**  
2,200 SF

**ASKING RENT**  
\$8,000 NNN

**TERM**  
Negotiable

**POSSESSION**  
Immediate

**FRONTAGE**  
40 FT

### COMMENTS

- Stand-alone, single-story commercial building
- Column-free space
- 12 FT ceiling heights throughout
- Existing plumbing in place
- Strong natural light potential
- Flexible layout suitable for a variety of uses
- Ideal for creative studio, showroom, light industrial, or fitness
- Located in a rapidly growing Bushwick corridor
- Surrounded by residential density and creative / industrial users
- Easy access to L (Wilson Ave) and J/Z (Chauncey St) trains

### NEIGHBORS

- Buntopia • BK Fit • Mao Mao • Ducey Kitchen •  
Broadway Lumber • Dunkin' • Popeyes • Papa Johns  
• Big Boy Deli • La Lupe • The Concrete Jungle

### TRANSPORTATION



### STEPHEN LIGAMBI

Senior Associate  
212.468.5985  
sligambi@meridiancapital.com

### YIANNI THERMOS

Associate  
212.468.5939  
ythermos@meridiancapital.com



PROPERTY INFORMATION

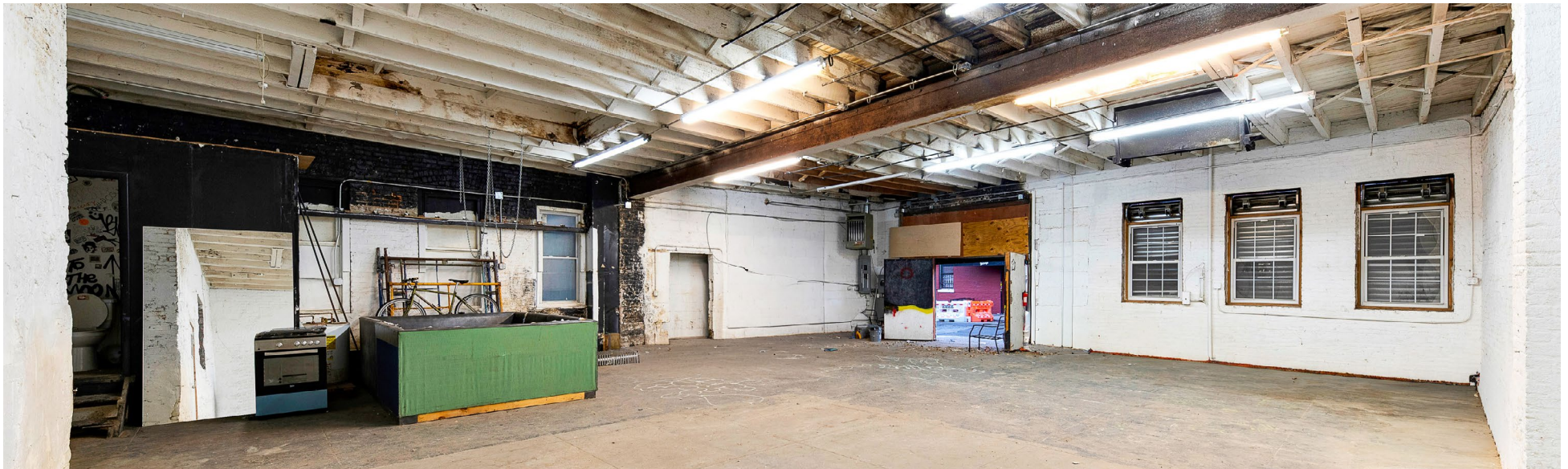


**MERIDIAN**  
RETAIL LEASING

# 6 CHARLES PLACE

BUSHWICK, BROOKLYN | Off the Corner of Charles Place and Willoughby Avenue

INDUSTRIAL/RETAIL FOR LEASE



INTERIOR

## STEPHEN LIGAMBI

Senior Associate  
212.468.5985  
sligambi@meridiancapital.com

## YIANNI THERMOS

Associate  
212.468.5939  
ythermos@meridiancapital.com



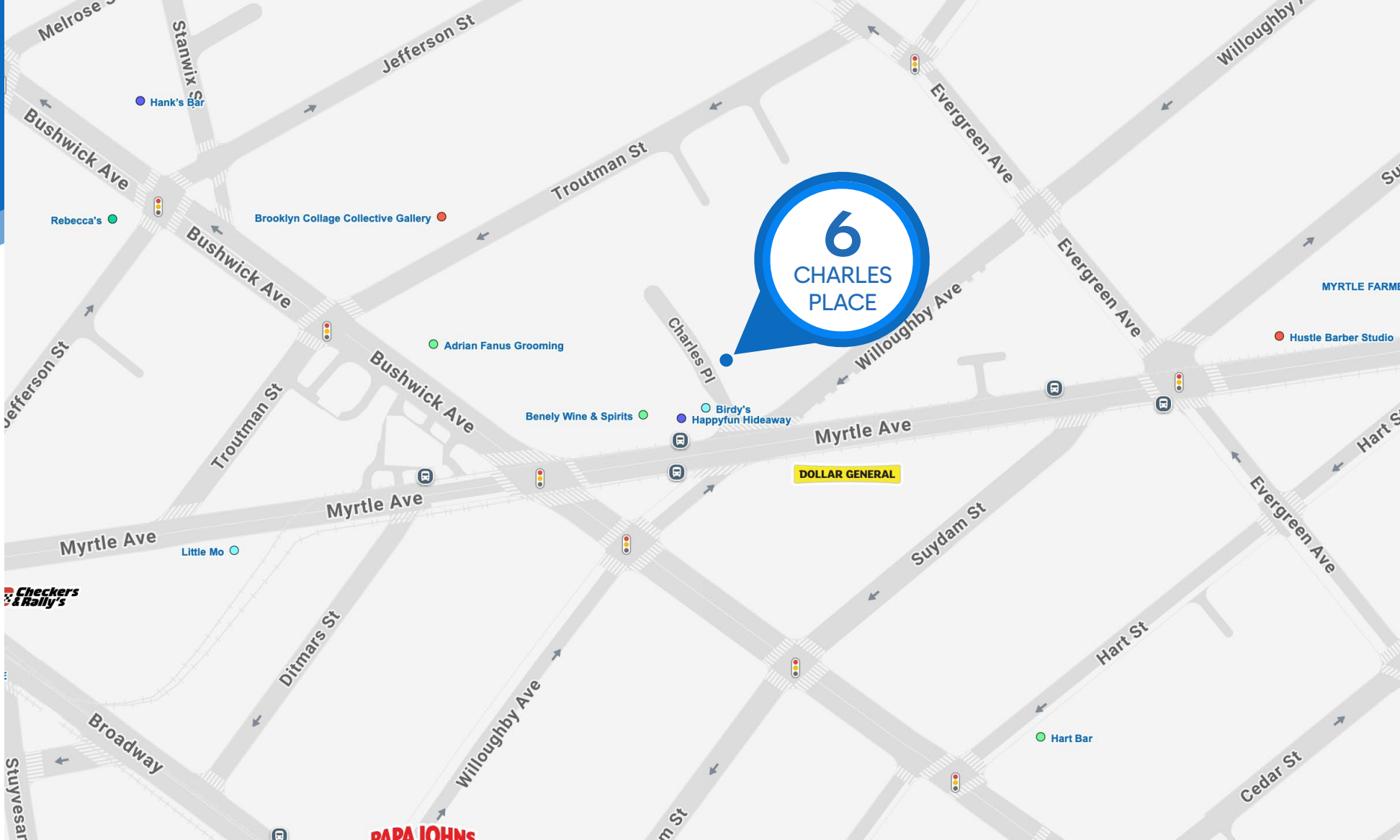
**MERIDIAN**  
RETAIL LEASING

All information supplied is from sources deemed reliable and is furnished subject to errors, omissions, modifications, removal of the listing from sale or lease, and to any listing conditions, including the rates and manner of payment of commissions for particular offerings imposed by Meridian Capital Group. This information may include estimates and projections prepared by Meridian Capital Group with respect to future events, and these future events may or may not actually occur. Such estimates and projections reflect various assumptions concerning anticipated results. While Meridian Capital Group believes these assumptions are reasonable, there can be no assurance that any of these estimates and projections will be correct. Therefore, actual results may vary materially from these estimates and projections. Any square footage dimensions set forth are approximate.

# 6 CHARLES PLACE

BUSHWICK, BROOKLYN | Off the Corner of Charles Place and Willoughby Avenue

INDUSTRIAL/RETAIL FOR LEASE



NEIGHBORS

**STEPHEN LIGAMBI**  
Senior Associate  
212.468.5985  
sligambi@meridiancapital.com

**YIANNI THERMOS**  
Associate  
212.468.5939  
ythermos@meridiancapital.com



All information supplied is from sources deemed reliable and is furnished subject to errors, omissions, modifications, removal of the listing from sale or lease, and to any listing conditions, including the rates and manner of payment of commissions for particular offerings imposed by Meridian Capital Group. This information may include estimates and projections prepared by Meridian Capital Group with respect to future events, and these future events may or may not actually occur. Such estimates and projections reflect various assumptions concerning anticipated results. While Meridian Capital Group believes these assumptions are reasonable, there can be no assurance that any of these estimates and projections will be correct. Therefore, actual results may vary materially from these estimates and projections. Any square footage dimensions set forth are approximate.