

437

WEST 16TH STREET MEATPACKING DISTRICT, NYC

Between Ninth & Tenth Avenues

ENTIRE BUILDING FOR LEASE



APPROXIMATE SIZE

Ground Floor: 4,999 SF
Second Floor: 4,999 SF
Third Floor: 4,999 SF
Fourth Floor: 4,999 SF
Fifth Floor: 4,999 SF
Total: 24,999 SF

ASKING RENT
\$2.5 Per Annum

POSSESSION
Arranged

TERM
15 Years

FRONTAGE
50 FT

COMMENTS

- Full-building flagship opportunity featuring exclusive rooftop access, sunroof gallery space, and built-out office infrastructure
- Premier co-tenancy alongside Chelsea Market, Google HQ, TAO Downtown, Crane Club, and Buddakan
- Currently occupied by Restoration Hardware's gallery and offices, offering strong build-out and branding potential
- Rooftop and lower level available for use
- Seeking a single-tenant operator
- Perfect for private members club, speakeasy, and established hospitality operators
- Positioned in the heart of one of Manhattan's most dynamic retail, hospitality, and technology corridors

NEIGHBORS

Crane Club • Verde New York • Sarabeth's • ARTECHOUSE • Cull & Pistol • Buddakan • TAO Downtown • Chelsea Market • Alice + Olivia • Fellini Coffee • SoHo House • Rag & Bone

TRANSPORTATION

A C E L

JAMES FAMULARO

President
646.658.7373
jfamularo@meridiancapital.com

COLE KLEPPINGER

Senior Associate
212.468.5993
ckleppinger@meridiancapital.com



MERIDIAN
RETAIL LEASING

All information supplied is from sources deemed reliable and is furnished subject to errors, omissions, modifications, removal of the listing from sale or lease, and to any listing conditions, including the rates and manner of payment of commissions for particular offerings imposed by Meridian Capital Group. This information may include estimates and projections prepared by Meridian Capital Group with respect to future events, and these future events may or may not actually occur. Such estimates and projections reflect various assumptions concerning anticipated results. While Meridian Capital Group believes these assumptions are reasonable, there can be no assurance that any of these estimates and projections will be correct. Therefore, actual results may vary materially from these estimates and projections. Any square footage dimensions set forth are approximate.



INTERIOR

JAMES FAMULARO

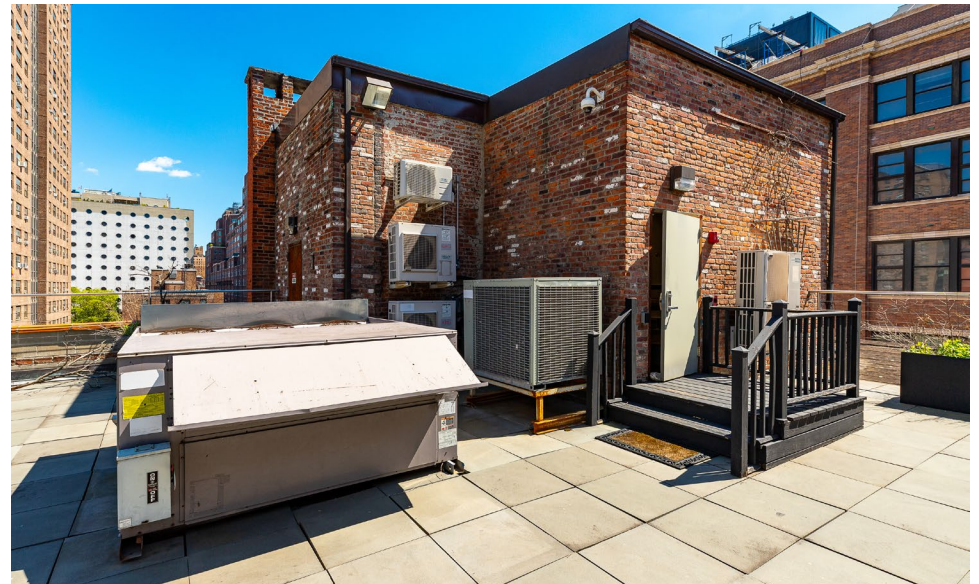
President
646.658.7373
jfamularo@meridiancapital.com

COLE KLEPPINGER

Senior Associate
212.468.5993
ckleppinger@meridiancapital.com



MERIDIAN
RETAIL LEASING



EXTERIOR

JAMES FAMULARO

President
646.658.7373
jfamularo@meridiancapital.com

COLE KLEPPINGER

Senior Associate
212.468.5993
ckleppinger@meridiancapital.com



MERIDIAN
RETAIL LEASING

437 WEST 16TH STREET
MEATPACKING DISTRICT, NYC | Between Ninth and Tenth Avenues

ENTIRE BUILDING FOR LEASE



INTERIOR

JAMES FAMULARO

President
646.658.7373
jfamularo@meridiancapital.com

COLE KLEPPINGER

Senior Associate
212.468.5993
ckleppinger@meridiancapital.com



MERIDIAN
RETAIL LEASING

All information supplied is from sources deemed reliable and is furnished subject to errors, omissions, modifications, removal of the listing from sale or lease, and to any listing conditions, including the rates and manner of payment of commissions for particular offerings imposed by Meridian Capital Group. This information may include estimates and projections prepared by Meridian Capital Group with respect to future events, and these future events may or may not actually occur. Such estimates and projections reflect various assumptions concerning anticipated results. While Meridian Capital Group believes these assumptions are reasonable, there can be no assurance that any of these estimates and projections will be correct. Therefore, actual results may vary materially from these estimates and projections. Any square footage dimensions set forth are approximate.

437 WEST 16TH STREET
MEATPACKING DISTRICT, NYC | Between Ninth and Tenth Avenues

ENTIRE BUILDING FOR LEASE



INTERIOR

JAMES FAMULARO

President
646.658.7373
jfamularo@meridiancapital.com

COLE KLEPPINGER

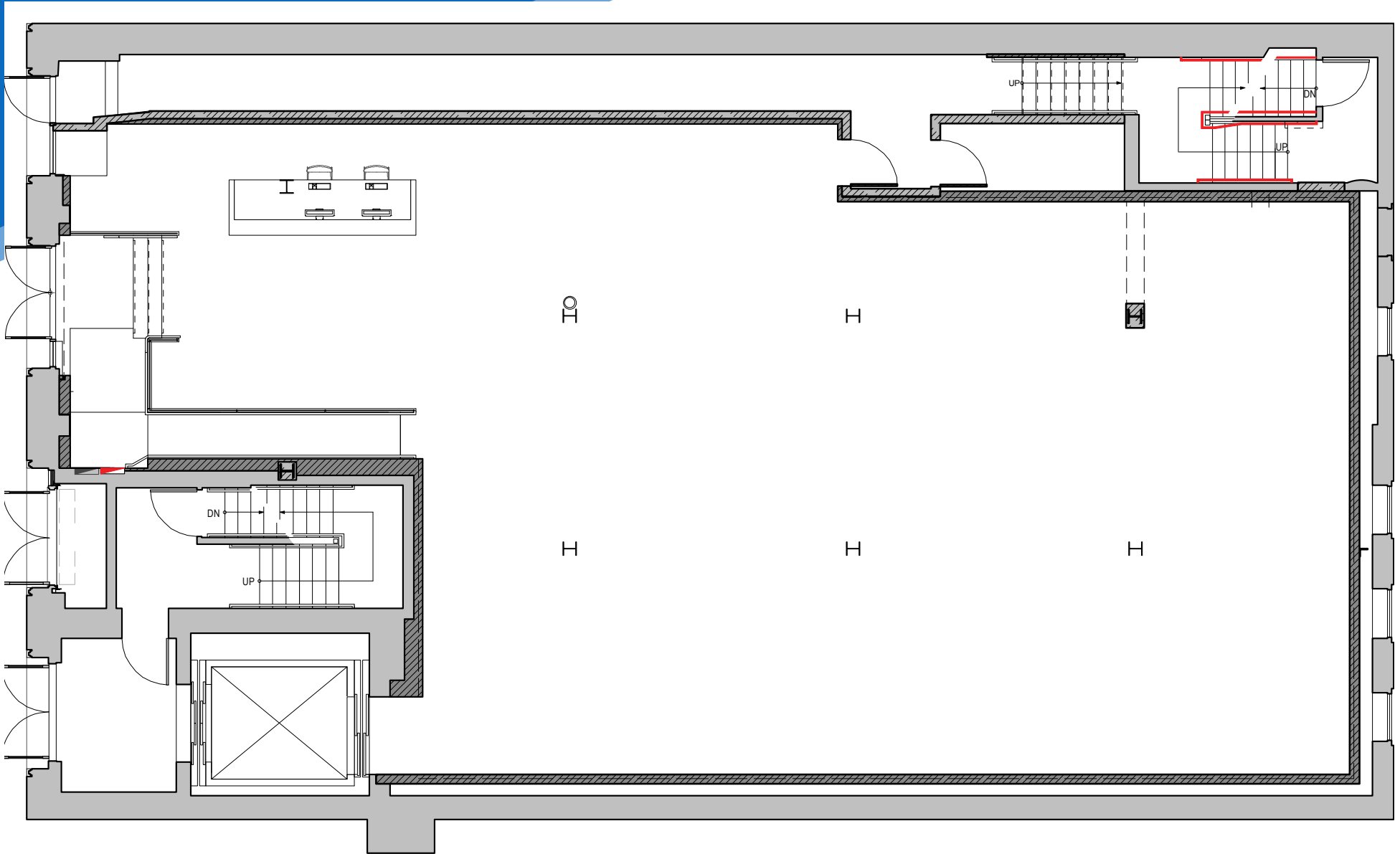
Senior Associate
212.468.5993
ckleppinger@meridiancapital.com



MERIDIAN
RETAIL LEASING

All information supplied is from sources deemed reliable and is furnished subject to errors, omissions, modifications, removal of the listing from sale or lease, and to any listing conditions, including the rates and manner of payment of commissions for particular offerings imposed by Meridian Capital Group. This information may include estimates and projections prepared by Meridian Capital Group with respect to future events, and these future events may or may not actually occur. Such estimates and projections reflect various assumptions concerning anticipated results. While Meridian Capital Group believes these assumptions are reasonable, there can be no assurance that any of these estimates and projections will be correct. Therefore, actual results may vary materially from these estimates and projections. Any square footage dimensions set forth are approximate.

FLOOR PLAN | GROUND FLOOR



JAMES FAMULARO

President
646.658.7373
jfamularo@meridiancapital.com

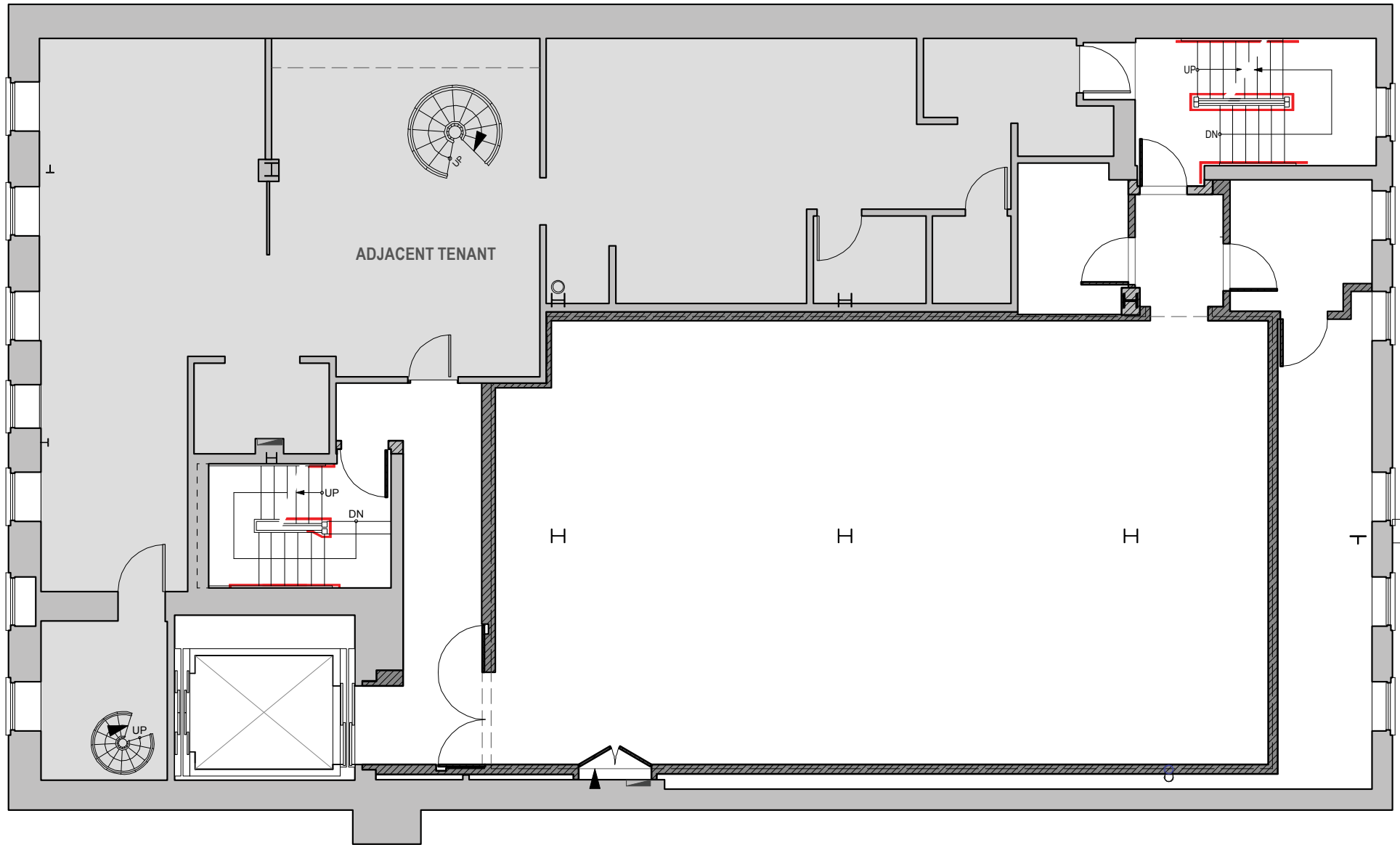
COLE KLEPPINGER

Senior Associate
212.468.5993
ckleppinger@meridiancapital.com



MERIDIAN
RETAIL LEASING

FLOOR PLAN | SECOND FLOOR



JAMES FAMULARO

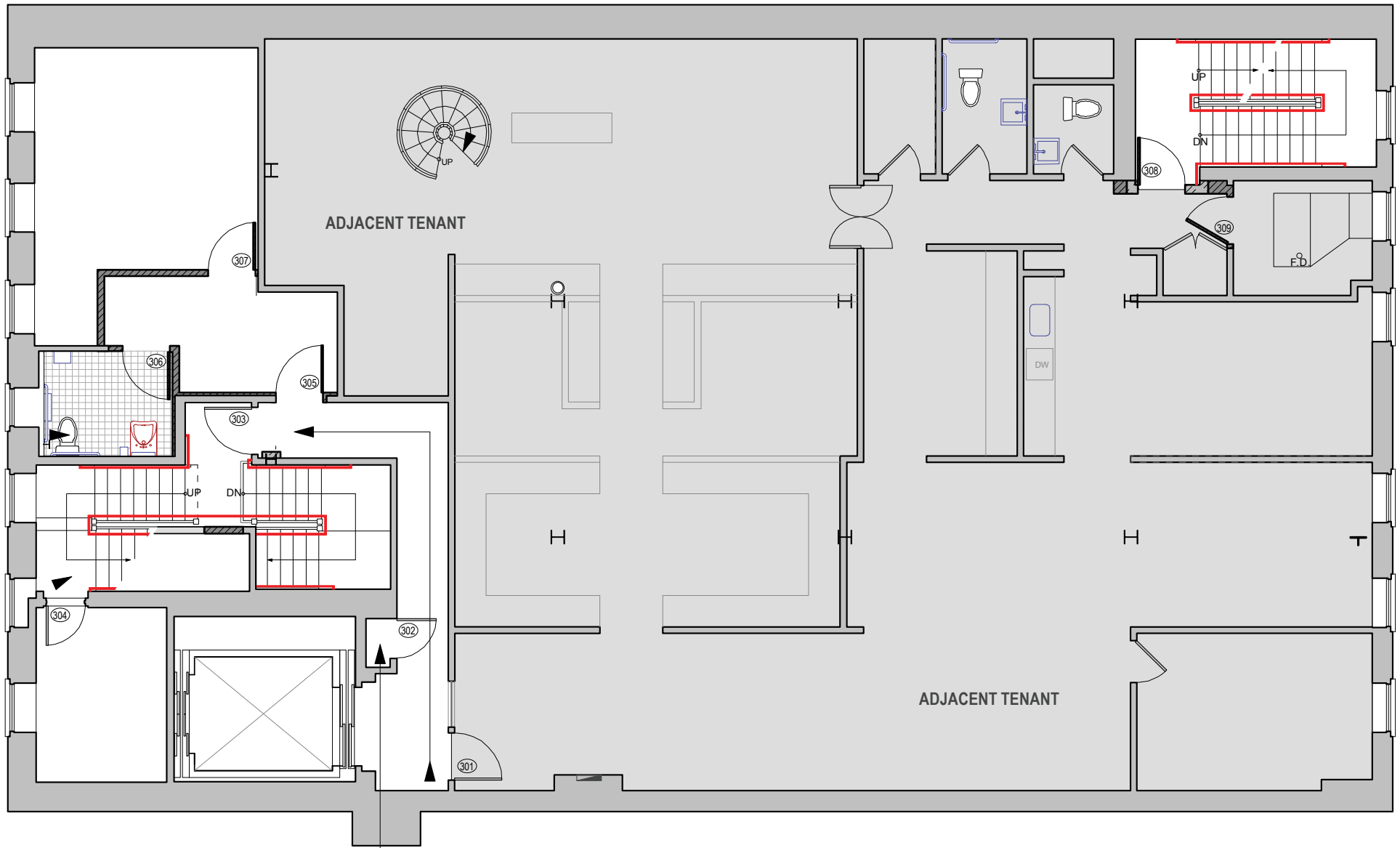
President
646.658.7373
jfamularo@meridiancapital.com

COLE KLEPPINGER

Senior Associate
212.468.5993
ckleppinger@meridiancapital.com



MERIDIAN
RETAIL LEASING



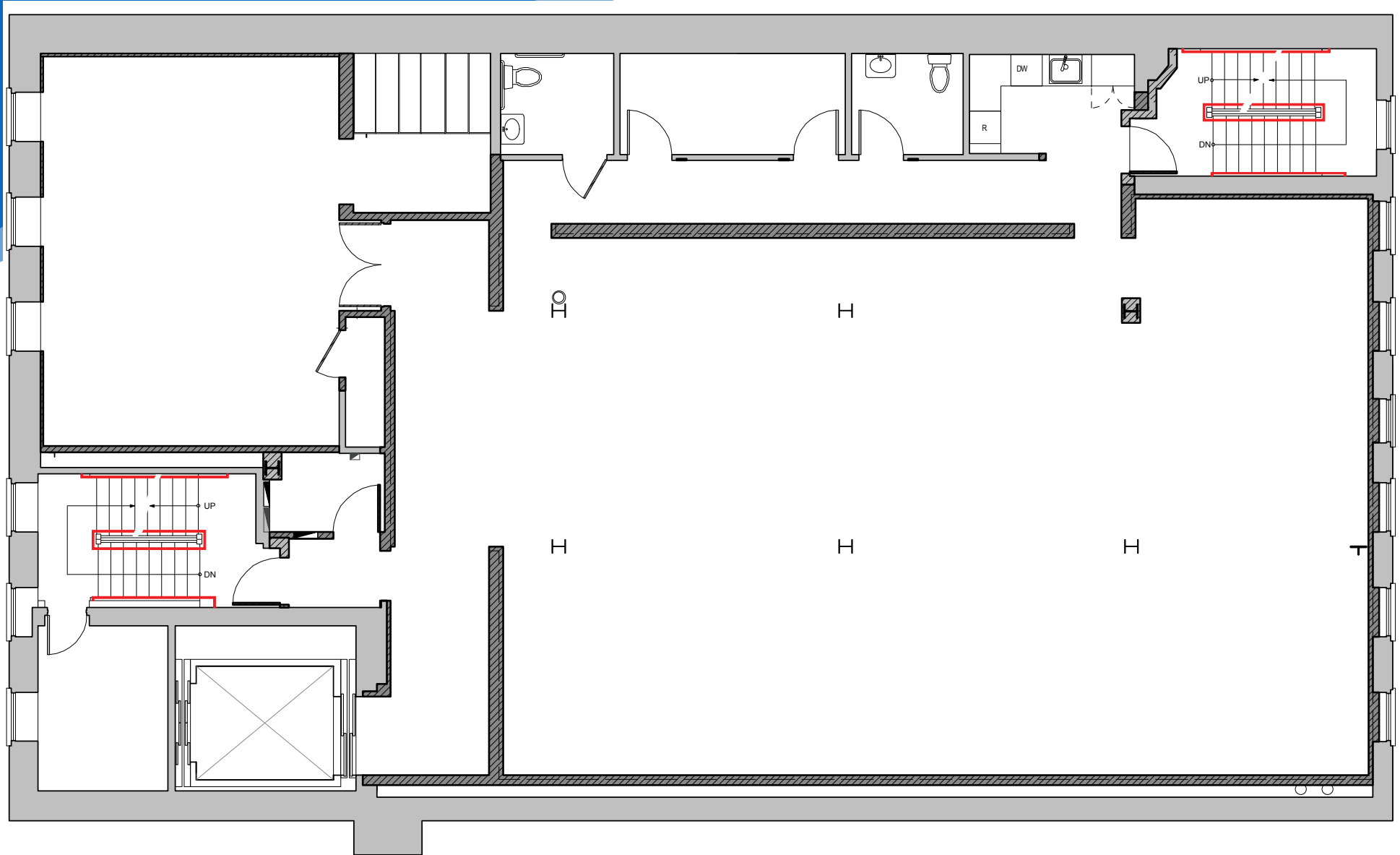
JAMES FAMULARO
President
646.658.7373
jfamularo@meridiancapital.com

COLE KLEPPINGER
Senior Associate
212.468.5993
ckleppinger@meridiancapital.com



MERIDIAN
RETAIL LEASING

FLOOR PLAN | FOURTH FLOOR



JAMES FAMULARO

President
646.658.7373
jfamularo@meridiancapital.com

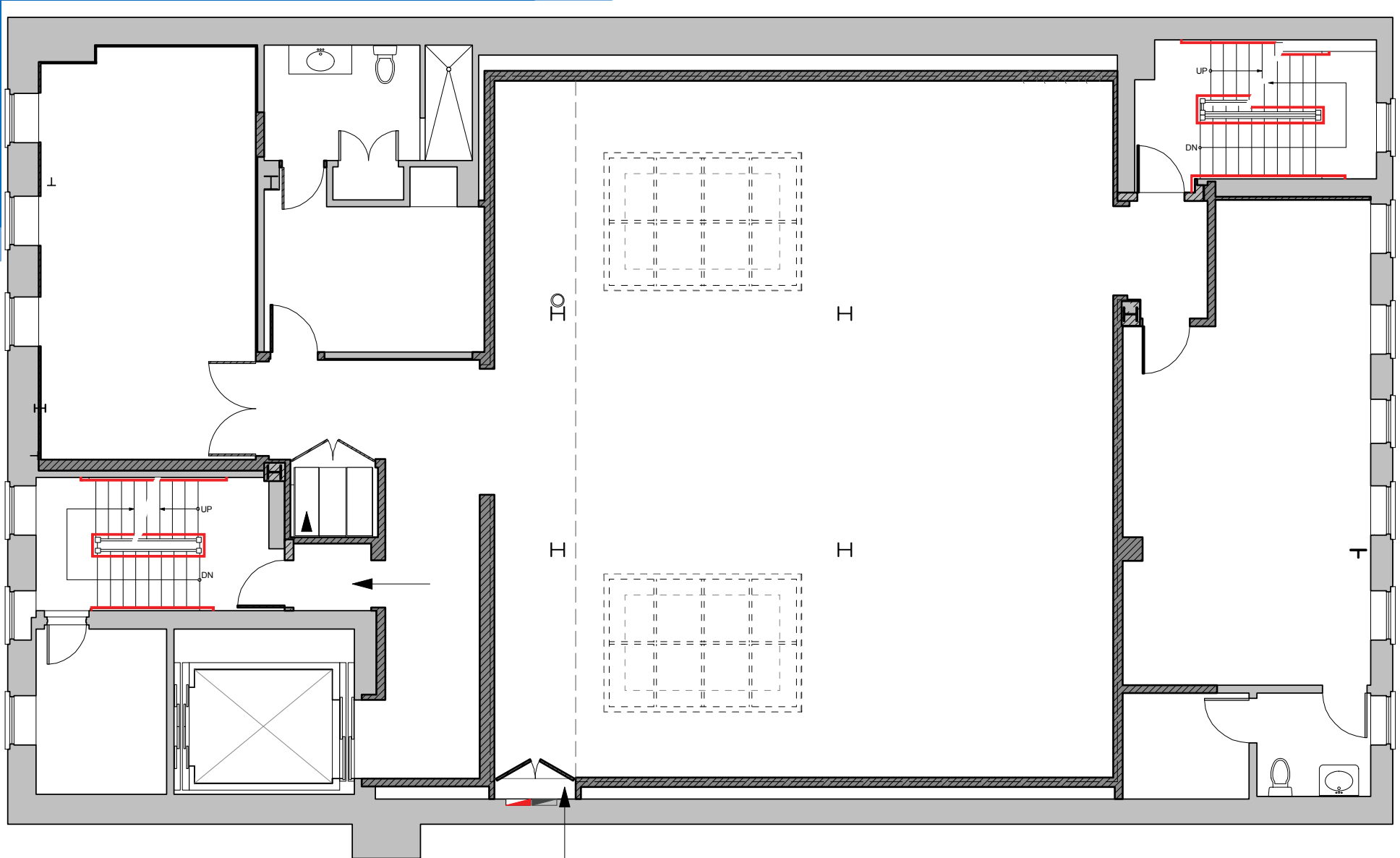
COLE KLEPPINGER

Senior Associate
212.468.5993
ckleppinger@meridiancapital.com



MERIDIAN
RETAIL LEASING

FLOOR PLAN | FIFTH FLOOR



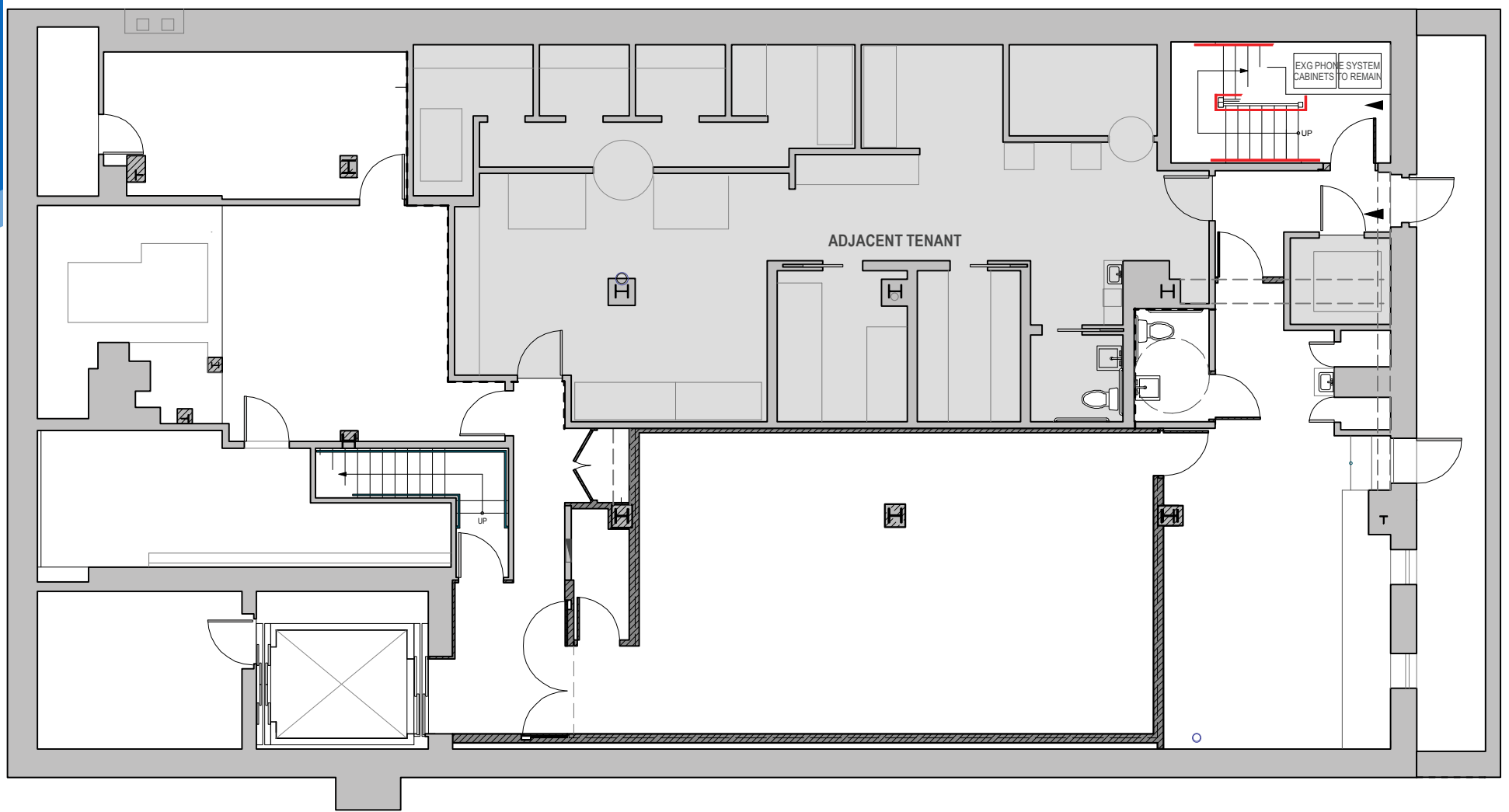
JAMES FAMULARO
President
646.658.7373
jfamularo@meridiancapital.com

COLE KLEPPINGER
Senior Associate
212.468.5993
ckleppinger@meridiancapital.com



MERIDIAN
RETAIL LEASING

FLOOR PLAN | LOWER LEVEL



JAMES FAMULARO

President
646.658.7373
jfamularo@meridiancapital.com

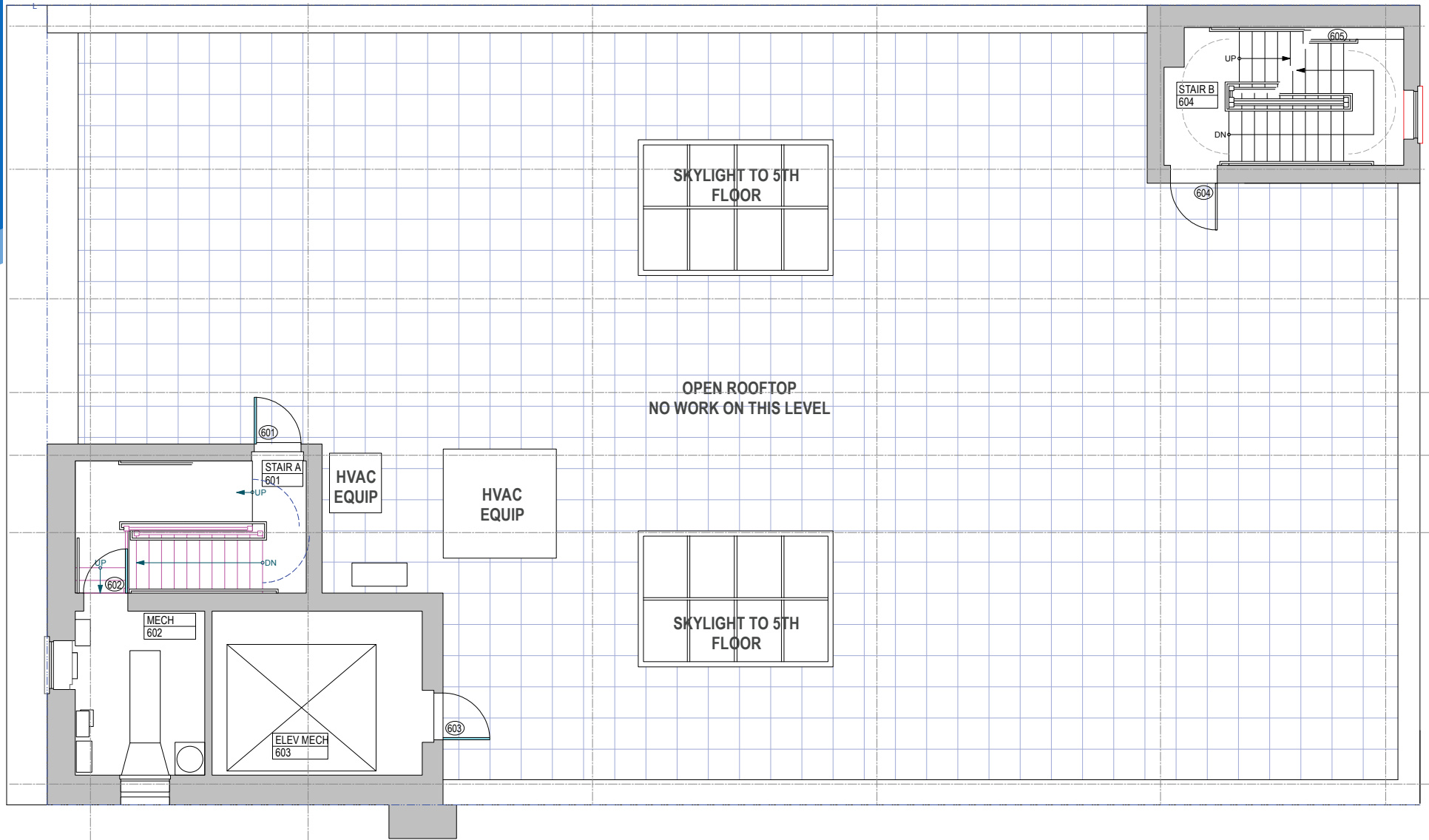
COLE KLEPPINGER

Senior Associate
212.468.5993
ckleppinger@meridiancapital.com



MERIDIAN
RETAIL LEASING

FLOOR PLAN | ROOFTOP



JAMES FAMULARO
President
646.658.7373
jfamularo@meridiancapital.com

COLE KLEPPINGER
Senior Associate
212.468.5993
ckleppinger@meridiancapital.com



MERIDIAN
RETAIL LEASING

437 WEST 16TH STREET
 MEATPACKING DISTRICT, NYC | Between Ninth and Tenth Avenues

ENTIRE BUILDING FOR LEASE



NEIGHBORS

JAMES FAMULARO
 President
 646.658.7373
 jfamularo@meridiancapital.com

COLE KLEPPINGER
 Senior Associate
 212.468.5993
 ckleppinger@meridiancapital.com



MERIDIAN
 RETAIL LEASING

All information supplied is from sources deemed reliable and is furnished subject to errors, omissions, modifications, removal of the listing from sale or lease, and to any listing conditions, including the rates and manner of payment of commissions for particular offerings imposed by Meridian Capital Group. This information may include estimates and projections prepared by Meridian Capital Group with respect to future events, and these future events may or may not actually occur. Such estimates and projections reflect various assumptions concerning anticipated results. While Meridian Capital Group believes these assumptions are reasonable, there can be no assurance that any of these estimates and projections will be correct. Therefore, actual results may vary materially from these estimates and projections. Any square footage dimensions set forth are approximate.