

270

NOSTRAND AVENUE BED-STUY, BROOKLYN

Corner of Nostrand & Dekalb Avenues

RETAIL FOR LEASE



PROPERTY INFORMATION

APPROXIMATE SIZE

Full Retail Space: 8,873 SF (Divisible)
Retail Space 2: 1,885 SF

ASKING RENT

Full Retail: \$50/PSF
Divisions: \$60/PSF
Retail Space 2: \$10,000/Month

POSSESSION

Immediate

TERM

Negotiable

FRONTAGE

240 FT Wraparound

COMMENTS

- Brand new corner retail opportunity at the base of a newly developed 14- story building
- Wraparound glass frontage providing strong visibility and natural light
- Ideal for medical, wellness or retail use

NEIGHBORS

AdvantageCare Physicians • Lotus Threading Salon & Spa • Juice & Gems • Classic Trim Barber • Better Red Than Dead Books • Popeyes Louisiana Kitchen • Sugar Hill Restaurant & Supper Club • The Home Depot

TRANSPORTATION



NOAM AZIZ

Senior Director
212.468.5984
naziz@meridiancapital.com

CARSON SHAHRABANI

Senior Associate
212.468.5927
cshahrabani@meridiancapital.com

MAX FREUDENBERGER

Senior Associate
212.468.5951
mfreudenberg@meridiancapital.com

SHAYA KATZ

Associate
212.468.5991
shaya.katz@meridiancapital.com



All information supplied is from sources deemed reliable and is furnished subject to errors, omissions, modifications, removal of the listing from sale or lease, and to any listing conditions, including the rates and manner of payment of commissions for particular offerings imposed by Meridian Capital Group. This information may include estimates and projections prepared by Meridian Capital Group with respect to future events, and these future events may or may not actually occur. Such estimates and projections reflect various assumptions concerning anticipated results. While Meridian Capital Group believes these assumptions are reasonable, there can be no assurance that any of these estimates and projections will be correct. Therefore, actual results may vary materially from these estimates and projections. Any square footage dimensions set forth are approximate.



INTERIOR

NOAM AZIZ

Senior Director
212.468.5984
naziz@meridiancapital.com

CARSON SHAHRABANI

Senior Associate
212.468.5927
cshahrabani@meridiancapital.com

MAX FREUDENBERGER

Senior Associate
212.468.5951
mfreudenberg@meridiancapital.com

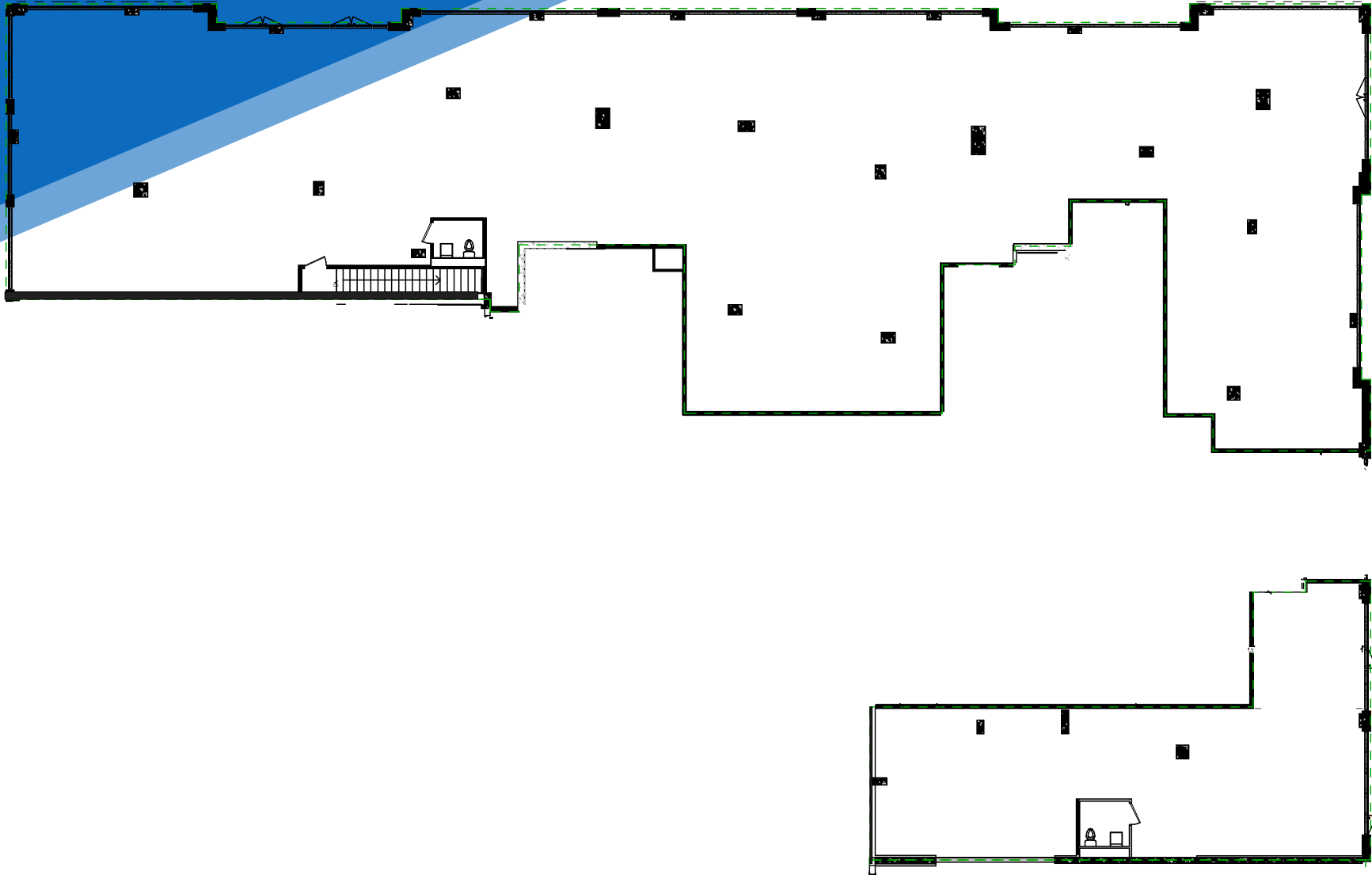
SHAYA KATZ

Associate
212.468.5991
shaya.katz@meridiancapital.com



270 NOSTRAND AVENUE
BED-STUY, BROOKLYN | Corner of Nostrand and Dekalb Avenues

RETAIL FOR LEASE



FLOOR PLAN

NOAM AZIZ

Senior Director
212.468.5984
naziz@meridiancapital.com

CARSON SHAHRABANI

Senior Associate
212.468.5927
cshahrabani@meridiancapital.com

MAX FREUDENBERGER

Senior Associate
212.468.5951
mfreudenberg@meridiancapital.com

SHAYA KATZ

Associate
212.468.5991
shaya.katz@meridiancapital.com

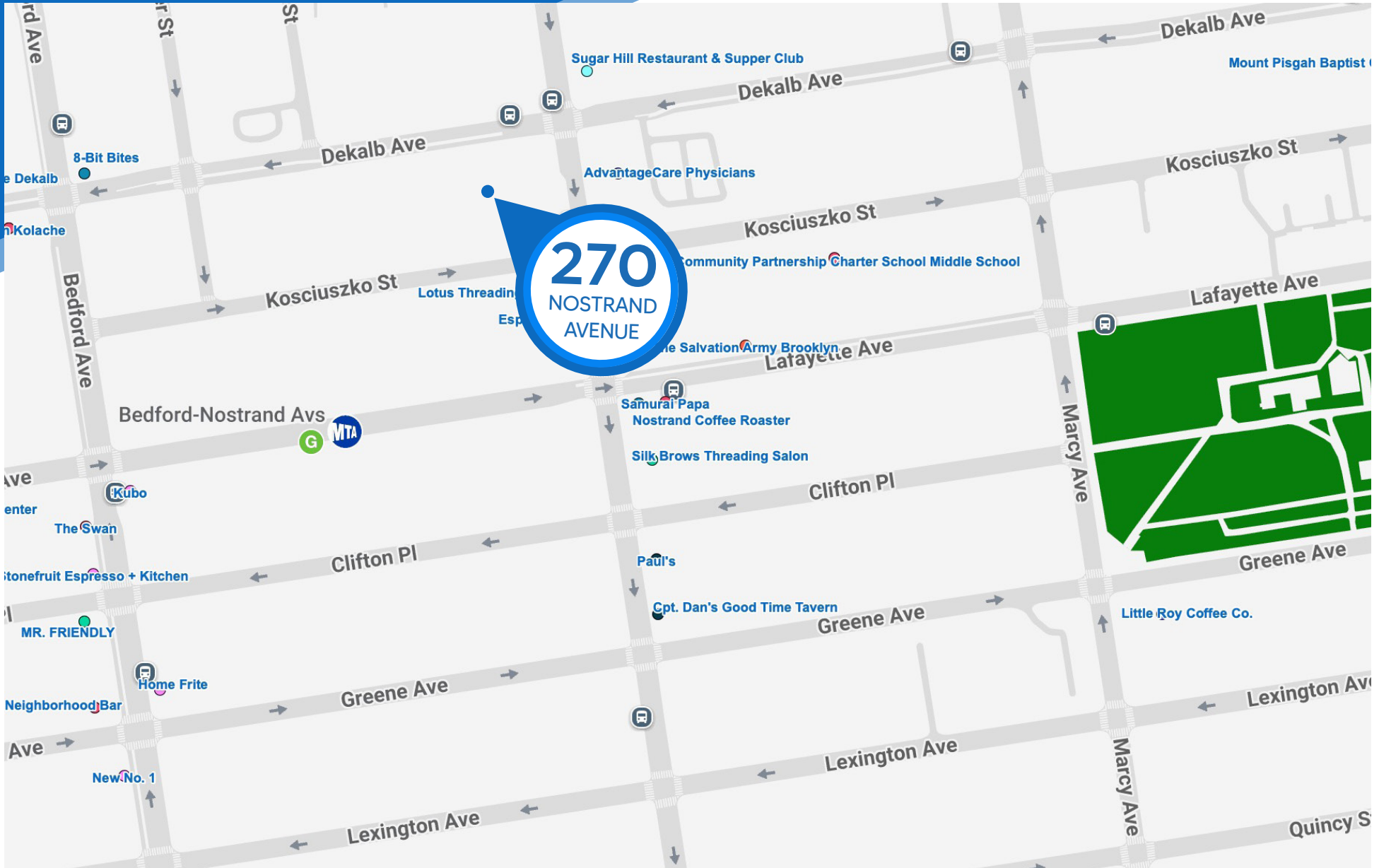


All information supplied is from sources deemed reliable and is furnished subject to errors, omissions, modifications, removal of the listing from sale or lease, and to any listing conditions, including the rates and manner of payment of commissions for particular offerings imposed by Meridian Capital Group. This information may include estimates and projections prepared by Meridian Capital Group with respect to future events, and these future events may or may not actually occur. Such estimates and projections reflect various assumptions concerning anticipated results. While Meridian Capital Group believes these assumptions are reasonable, there can be no assurance that any of these estimates and projections will be correct. Therefore, actual results may vary materially from these estimates and projections. Any square footage dimensions set forth are approximate.

270 NOSTRAND AVENUE

BED-STUY, BROOKLYN | Corner of Nostrand and Dekalb Avenues

RETAIL FOR LEASE



NEIGHBORS

NOAM AZIZ
Senior Director
212.468.5984
naziz@meridiancapital.com

CARSON SHAHRABANI
Senior Associate
212.468.5927
cshahrabani@meridiancapital.com

MAX FREUDENBERGER
Senior Associate
212.468.5951
mfreudenberg@meridiancapital.com

SHAYA KATZ
Associate
212.468.5991
shaya.katz@meridiancapital.com



All information supplied is from sources deemed reliable and is furnished subject to errors, omissions, modifications, removal of the listing from sale or lease, and to any listing conditions, including the rates and manner of payment of commissions for particular offerings imposed by Meridian Capital Group. This information may include estimates and projections prepared by Meridian Capital Group with respect to future events, and these future events may or may not actually occur. Such estimates and projections reflect various assumptions concerning anticipated results. While Meridian Capital Group believes these assumptions are reasonable, there can be no assurance that any of these estimates and projections will be correct. Therefore, actual results may vary materially from these estimates and projections. Any square footage dimensions set forth are approximate.