

# 270

## NOSTRAND AVENUE BED-STUY, BROOKLYN

Corner of Nostrand & Dekalb Avenues

COMMUNITY FACILITY FOR LEASE



### APPROXIMATE SIZE

2,464 SF

### ASKING RENT

\$13,000/ Month

### POSSESSION

Immediate

### TERM

Negotiable

### FRONTAGE

20 FT Wraparound

### COMMENTS

- Brand new corner Community Facility opportunity at the base of a newly developed 14- story building
- Wraparound glass frontage providing strong visibility and natural light
- Ideal for medical, wellness or retail use

### NEIGHBORS

AdvantageCare Physicians • Lotus Threading Salon & Spa • Juice & Gems • Classic Trim Barber • Better Red Than Dead Books • Popeyes Louisiana Kitchen • Sugar Hill Restaurant & Supper Club • The Home Depot

### TRANSPORTATION

G

### NOAM AZIZ

Senior Director  
212.468.5984  
naziz@meridiancapital.com

### CARSON SHAHRABANI

Senior Associate  
212.468.5927  
cshahrabani@meridiancapital.com

### MAX FREUDENBERGER

Senior Associate  
212.468.5951  
mfreudenberg@meridiancapital.com

### SHAYA KATZ

Associate  
212.468.5991  
shaya.katz@meridiancapital.com



All information supplied is from sources deemed reliable and is furnished subject to errors, omissions, modifications, removal of the listing from sale or lease, and to any listing conditions, including the rates and manner of payment of commissions for particular offerings imposed by Meridian Capital Group. This information may include estimates and projections prepared by Meridian Capital Group with respect to future events, and these future events may or may not actually occur. Such estimates and projections reflect various assumptions concerning anticipated results. While Meridian Capital Group believes these assumptions are reasonable, there can be no assurance that any of these estimates and projections will be correct. Therefore, actual results may vary materially from these estimates and projections. Any square footage dimensions set forth are approximate.



INTERIOR

**NOAM AZIZ**  
Senior Director  
212.468.5984  
naziz@meridiancapital.com

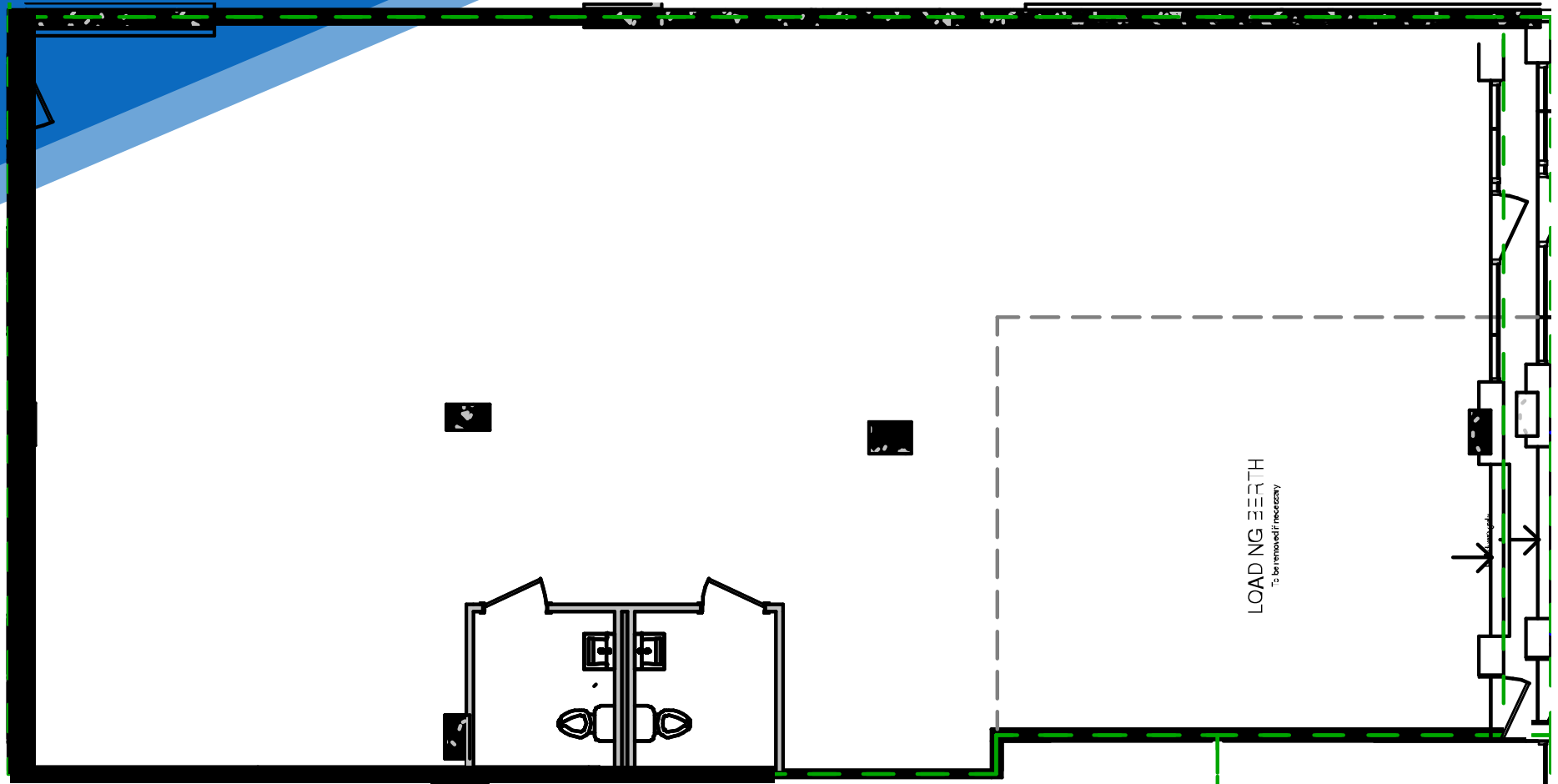
**CARSON SHAHRABANI**  
Senior Associate  
212.468.5927  
cshahrabani@meridiancapital.com

**MAX FREUDENBERGER**  
Senior Associate  
212.468.5951  
mfreudenberg@meridiancapital.com

**SHAYA KATZ**  
Associate  
212.468.5991  
shaya.katz@meridiancapital.com



FLOOR PLAN



**NOAM AZIZ**

Senior Director  
212.468.5984  
naziz@meridiancapital.com

**CARSON SHAHRABANI**

Senior Associate  
212.468.5927  
cshahrabani@meridiancapital.com

**MAX FREUDENBERGER**

Senior Associate  
212.468.5951  
mfreudenberg@meridiancapital.com

**SHAYA KATZ**

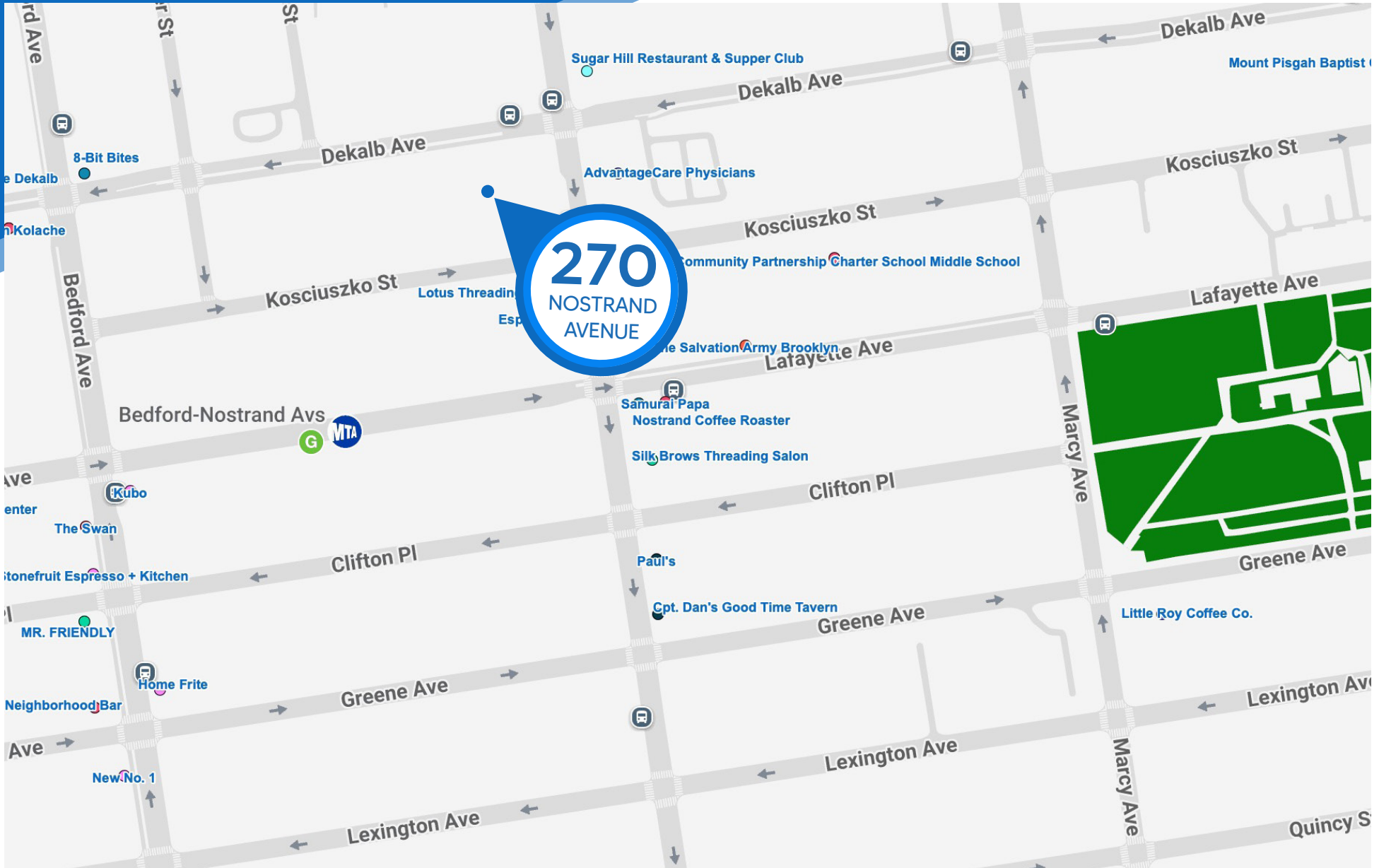
Associate  
212.468.5991  
shaya.katz@meridiancapital.com



# 270 NOSTRAND AVENUE

BED STUY, BROOKLYN | Corner of Nostrand and Dekalb Avenues

COMMUNITY FACILITY FOR LEASE



NEIGHBORS

## NOAM AZIZ

Senior Director  
212.468.5984  
naziz@meridiancapital.com

## CARSON SHAHRABANI

Senior Associate  
212.468.5927  
cshahrabani@meridiancapital.com

## MAX FREUDENBERGER

Senior Associate  
212.468.5951  
mfreudenberg@meridiancapital.com

## SHAYA KATZ

Associate  
212.468.5991  
shaya.katz@meridiancapital.com



All information supplied is from sources deemed reliable and is furnished subject to errors, omissions, modifications, removal of the listing from sale or lease, and to any listing conditions, including the rates and manner of payment of commissions for particular offerings imposed by Meridian Capital Group. This information may include estimates and projections prepared by Meridian Capital Group with respect to future events, and these future events may or may not actually occur. Such estimates and projections reflect various assumptions concerning anticipated results. While Meridian Capital Group believes these assumptions are reasonable, there can be no assurance that any of these estimates and projections will be correct. Therefore, actual results may vary materially from these estimates and projections. Any square footage dimensions set forth are approximate.