

242

WEST 36TH STREET
GARMENT DISTRICT, NYC

Between Seventh & Eighth Avenues

RETAIL/OFFICE FOR LEASE

APPROXIMATE SIZE

Ground Floor + Mezzanine: 4,500 SF
Second Floor: 4,500 SF
Lower Level: 14,000 SF

ASKING RENT

Upon Request

POSSESSION

Arranged

TERM

Negotiable

FRONTAGE

15 FT

COMMENTS

- Multiple floors allowing for retail, office, storage, or production use
- Significant basement capacity for logistics or back-of-house operations
- Prime Garment District location with strong daytime pedestrian traffic and surrounding office density
- Suitable for flagship, education, wellness, or large-format operators

NEIGHBORS

Penn Station • Ground Central Coffee Company
• Wendy's • Magic Hour Rooftop Bar & Lounge
• Bar Moxie • Zen Ramen & Sushi • Potbelly •
Crunch Fitness • Sweetgreen • Luckin' Coffee

TRANSPORTATION

1 2 3 N Q R W A C E

NOAM AZIZ

Senior Director
212.468.5984
naziz@meridiancapital.com

CARSON SHAHRABANI

Senior Associate
212.468.5927
cshahrabani@meridiancapital.com

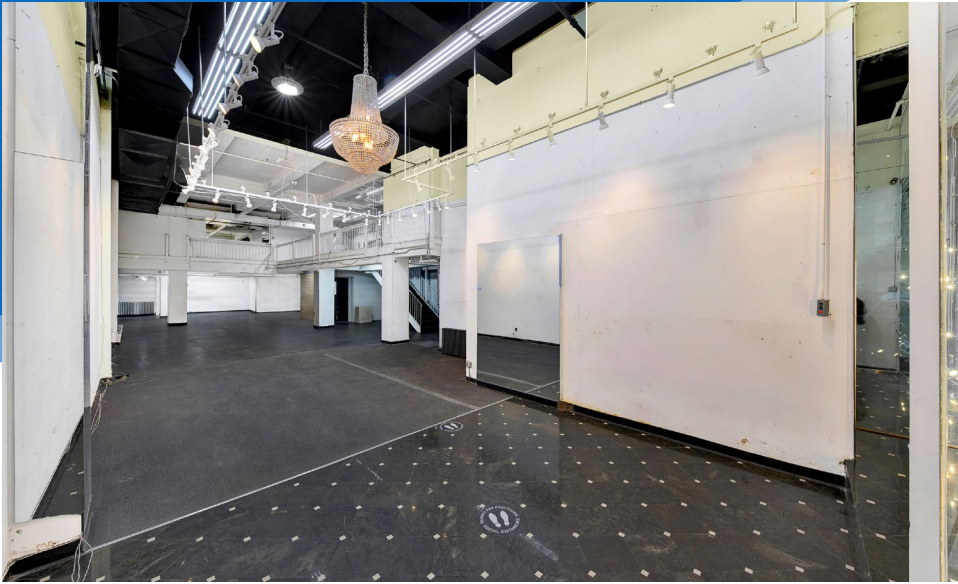
MAX FREUDENBERGER

Senior Associate
212.468.5951
mfreudenberg@meridiancapital.com



MERIDIAN
RETAIL LEASING

All information supplied is from sources deemed reliable and is furnished subject to errors, omissions, modifications, removal of the listing from sale or lease, and to any listing conditions, including the rates and manner of payment of commissions for particular offerings imposed by Meridian Capital Group. This information may include estimates and projections prepared by Meridian Capital Group with respect to future events, and these future events may or may not actually occur. Such estimates and projections reflect various assumptions concerning anticipated results. While Meridian Capital Group believes these assumptions are reasonable, there can be no assurance that any of these estimates and projections will be correct. Therefore, actual results may vary materially from these estimates and projections. Any square footage dimensions set forth are approximate.



INTERIOR | GROUND FLOOR

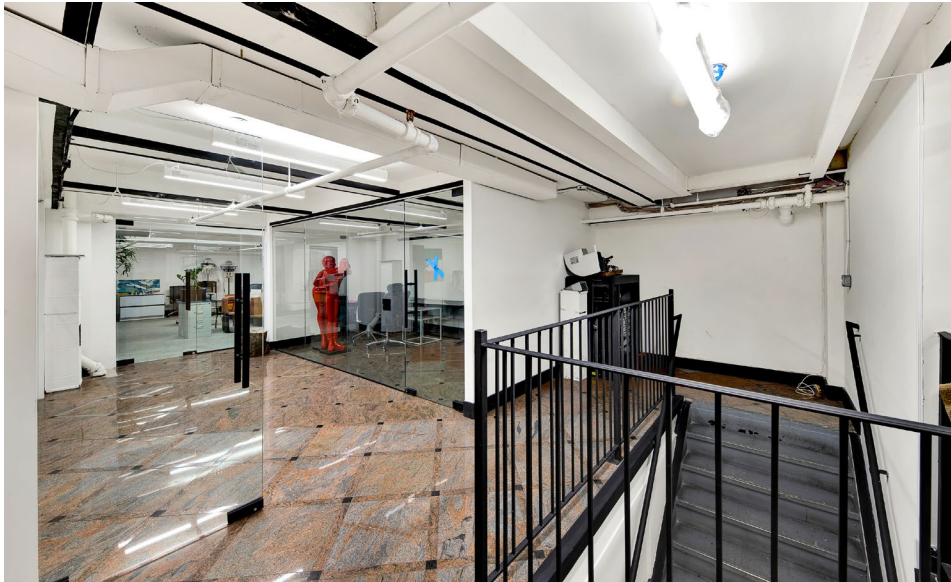
NOAM AZIZ
Senior Director
212.468.5984
naziz@meridiancapital.com

CARSON SHAHRABANI
Senior Associate
212.468.5927
cshahrabani@meridiancapital.com

MAX FREUDENBERGER
Senior Associate
212.468.5951
mfreudenberger@meridiancapital.com



MERIDIAN
RETAIL LEASING



INTERIOR | SECOND FLOOR

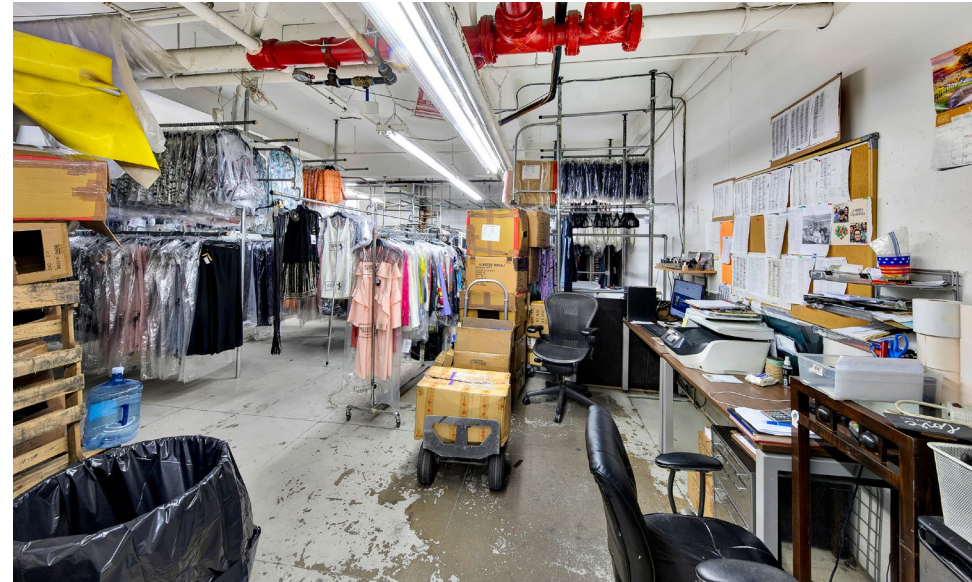
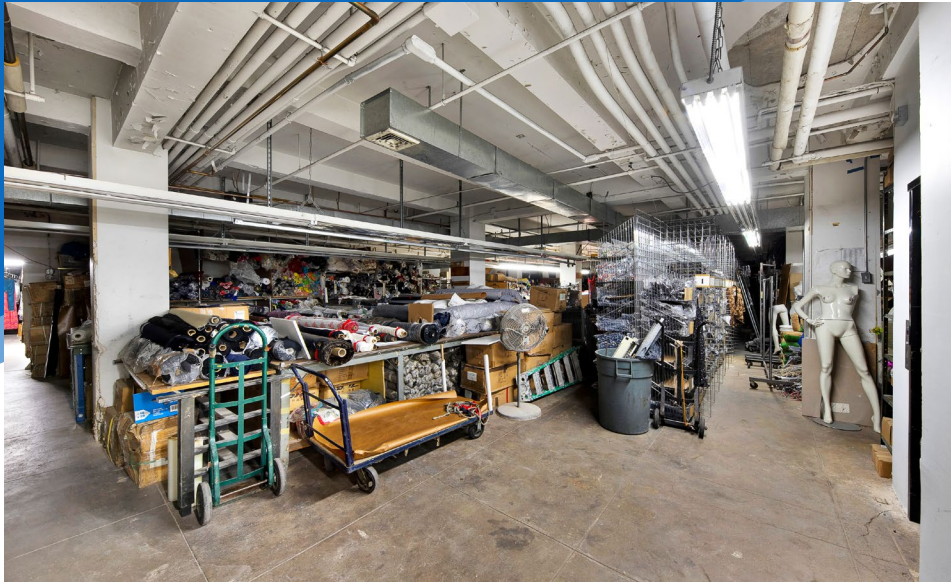
NOAM AZIZ
Senior Director
212.468.5984
naziz@meridiancapital.com

CARSON SHAHRABANI
Senior Associate
212.468.5927
cshahrabani@meridiancapital.com

MAX FREUDENBERGER
Senior Associate
212.468.5951
mfreudenberg@meridiancapital.com



MERIDIAN
RETAIL LEASING



INTERIOR | LOWER LEVEL

NOAM AZIZ
Senior Director
212.468.5984
naziz@meridiancapital.com

CARSON SHAHRABANI
Senior Associate
212.468.5927
cshahrabani@meridiancapital.com

MAX FREUDENBERGER
Senior Associate
212.468.5951
mfreudenberg@meridiancapital.com

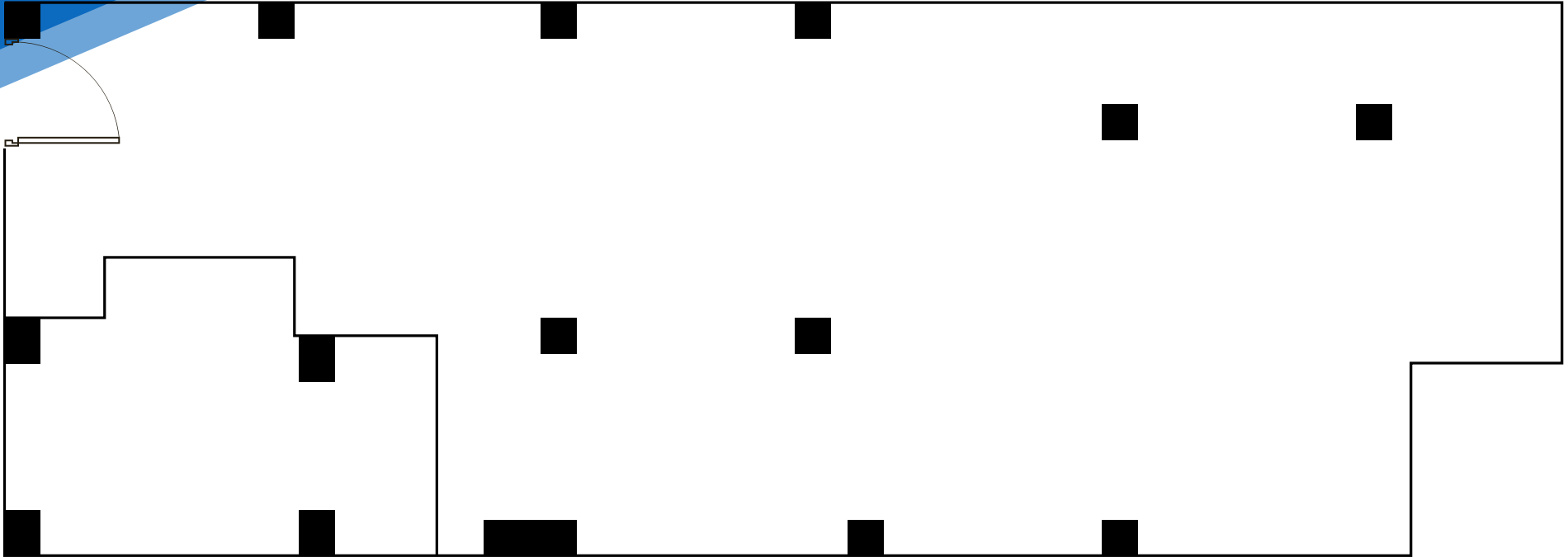


MERIDIAN
RETAIL LEASING

242 WEST 36TH STREET
GARMENT DISTRICT, NYC | Between Seventh and Eighth Avenues

RETAIL/OFFICE FOR LEASE

FLOOR PLAN | GROUND FLOOR



NOAM AZIZ
Senior Director
212.468.5984
naziz@meridiancapital.com

CARSON SHAHRABANI
Senior Associate
212.468.5927
cshahrabani@meridiancapital.com

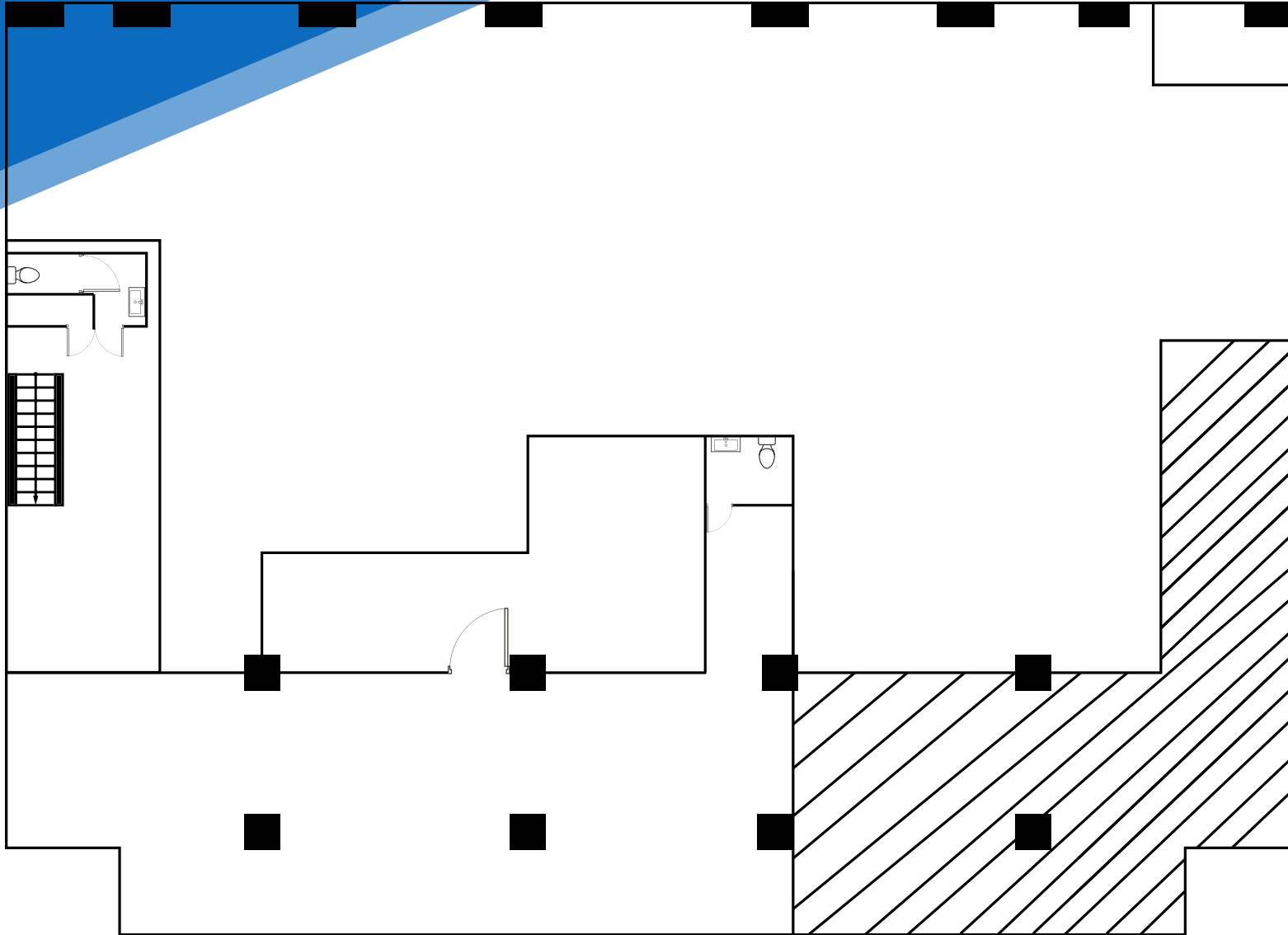
MAX FREUDENBERGER
Senior Associate
212.468.5951
mfreudenberger@meridiancapital.com



MERIDIAN
RETAIL LEASING

All information supplied is from sources deemed reliable and is furnished subject to errors, omissions, modifications, removal of the listing from sale or lease, and to any listing conditions, including the rates and manner of payment of commissions for particular offerings imposed by Meridian Capital Group. This information may include estimates and projections prepared by Meridian Capital Group with respect to future events, and these future events may or may not actually occur. Such estimates and projections reflect various assumptions concerning anticipated results. While Meridian Capital Group believes these assumptions are reasonable, there can be no assurance that any of these estimates and projections will be correct. Therefore, actual results may vary materially from these estimates and projections. Any square footage dimensions set forth are approximate.

FLOOR PLAN | MEZZANINE



NOAM AZIZ
Senior Director
212.468.5984
naziz@meridiancapital.com

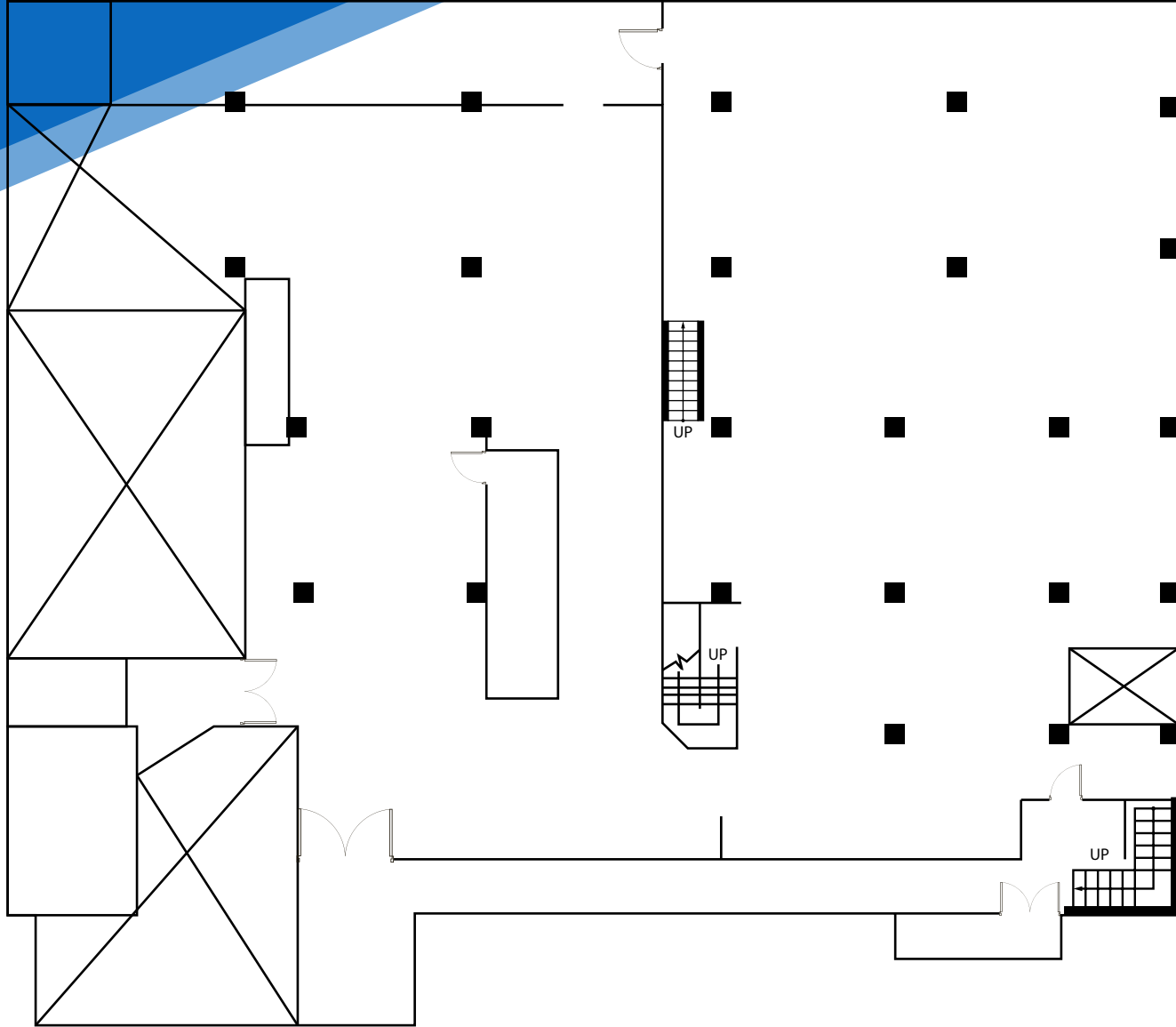
CARSON SHAHRABANI
Senior Associate
212.468.5927
cshahrabani@meridiancapital.com

MAX FREUDENBERGER
Senior Associate
212.468.5951
mfreudenberger@meridiancapital.com



MERIDIAN
RETAIL LEASING

FLOOR PLAN | LOWER LEVEL



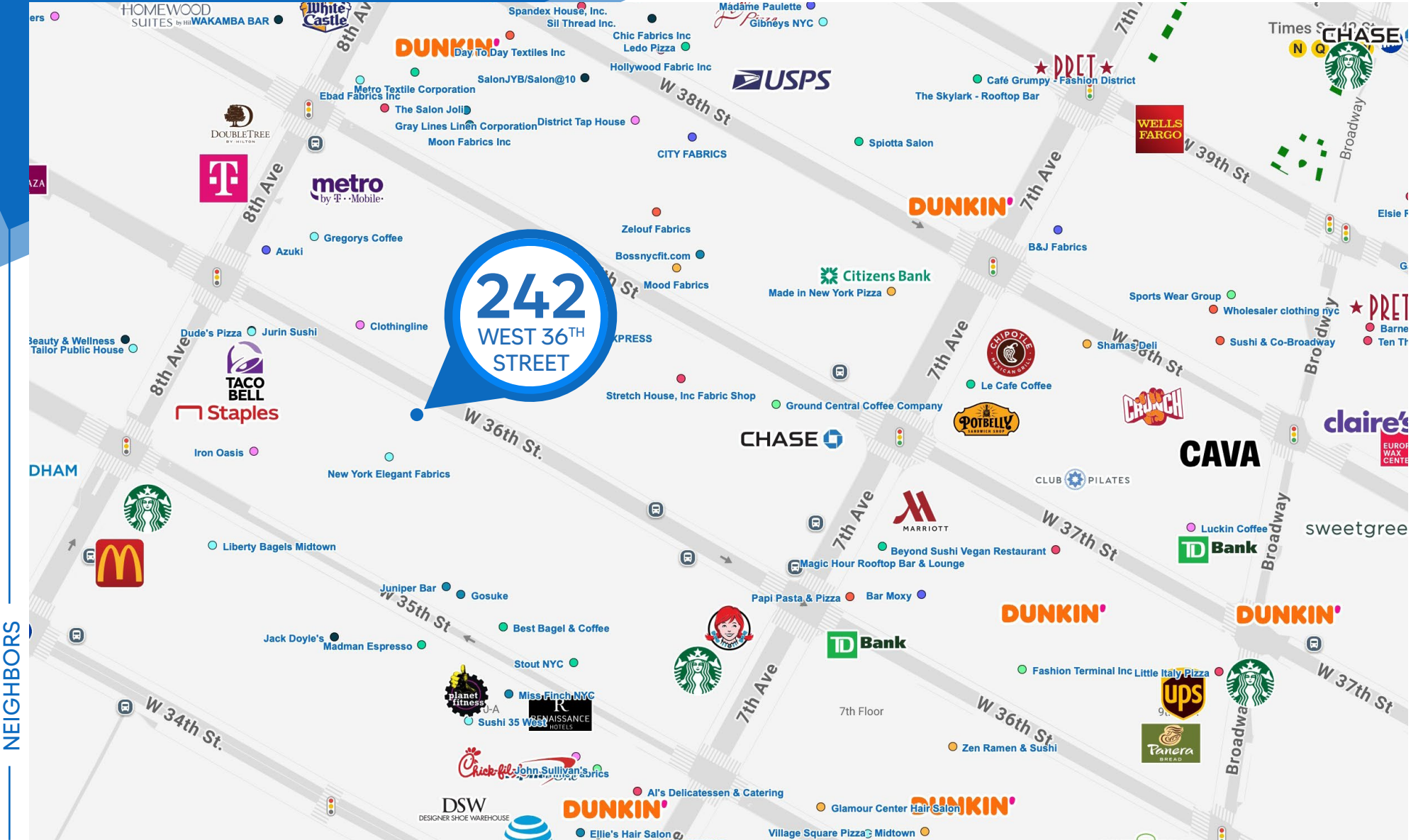
NOAM AZIZ
Senior Director
212.468.5984
naziz@meridiancapital.com

CARSON SHAHRABANI
Senior Associate
212.468.5927
cshahrabani@meridiancapital.com

MAX FREUDENBERGER
Senior Associate
212.468.5951
mfreudenberger@meridiancapital.com



MERIDIAN
RETAIL LEASING



NEIGHBORS

NOAM AZIZ
 Senior Director
 212.468.5984
 naziz@meridiancapital.com

CARSON SHAHRABANI
 Senior Associate
 212.468.5927
 cshahrabani@meridiancapital.com

MAX FREUDENBERGER
 Senior Associate
 212.468.5951
 mfreudenberger@meridiancapital.com



MERIDIAN
 RETAIL LEASING

All information supplied is from sources deemed reliable and is furnished subject to errors, omissions, modifications, removal of the listing from sale or lease, and to any listing conditions, including the rates and manner of payment of commissions for particular offerings imposed by Meridian Capital Group. This information may include estimates and projections prepared by Meridian Capital Group with respect to future events, and these future events may or may not actually occur. Such estimates and projections reflect various assumptions concerning anticipated results. While Meridian Capital Group believes these assumptions are reasonable, there can be no assurance that any of these estimates and projections will be correct. Therefore, actual results may vary materially from these estimates and projections. Any square footage dimensions set forth are approximate.