

# 242

WEST 36<sup>TH</sup> STREET  
GARMENT DISTRICT, NYC

Between Seventh & Eighth Avenues

RETAIL FOR LEASE

#### APPROXIMATE SIZE

Ground Floor: 3,000 SF  
Mezzanine: 1,500 SF

#### ASKING RENT

\$20,000/Month

#### POSSESSION

Arranged

#### TERM

Negotiable

#### FRONTAGE

15 FT

#### COMMENTS

- Ground floor space with mezzanine
- Flexible configuration for multiple retail formats
- Prime Garment District location with strong daytime pedestrian traffic and surrounding office density
- Ideal for retail, showroom, fitness, or experiential uses

#### NEIGHBORS

Penn Station • Ground Central Coffee Company  
• Wendy's • Magic Hour Rooftop Bar & Lounge  
• Bar Moxy • Zen Ramen & Sushi • Potbelly •  
Crunch Fitness • Sweetgreen • Luckin' Coffee

#### TRANSPORTATION

1 2 3 N Q R W A C E



PROPERTY INFORMATION

#### NOAM AZIZ

Senior Director  
212.468.5984  
naziz@meridiancapital.com

#### CARSON SHAHRABANI

Senior Associate  
212.468.5927  
cshahrabani@meridiancapital.com

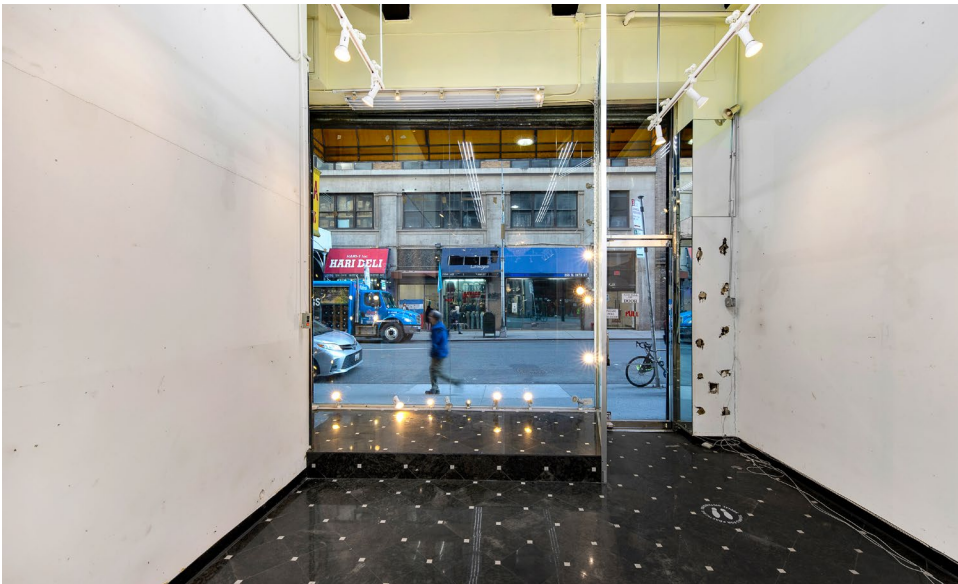
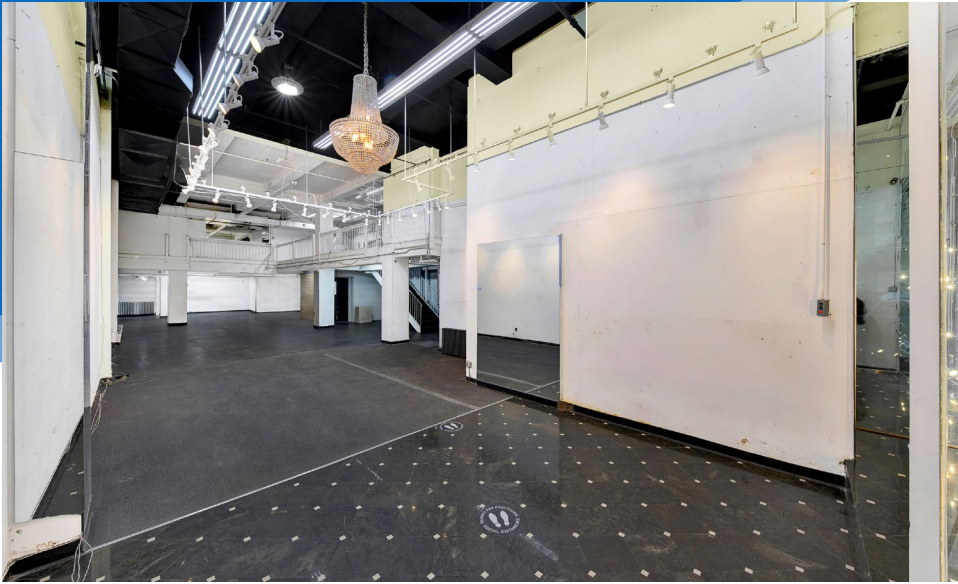
#### MAX FREUDENBERGER

Senior Associate  
212.468.5951  
mfreudenberg@meridiancapital.com



**MERIDIAN**  
RETAIL LEASING

All information supplied is from sources deemed reliable and is furnished subject to errors, omissions, modifications, removal of the listing from sale or lease, and to any listing conditions, including the rates and manner of payment of commissions for particular offerings imposed by Meridian Capital Group. This information may include estimates and projections prepared by Meridian Capital Group with respect to future events, and these future events may or may not actually occur. Such estimates and projections reflect various assumptions concerning anticipated results. While Meridian Capital Group believes these assumptions are reasonable, there can be no assurance that any of these estimates and projections will be correct. Therefore, actual results may vary materially from these estimates and projections. Any square footage dimensions set forth are approximate.



INTERIOR

**NOAM AZIZ**  
Senior Director  
212.468.5984  
naziz@meridiancapital.com

**CARSON SHAHRABANI**  
Senior Associate  
212.468.5927  
cshahrabani@meridiancapital.com

**MAX FREUDENBERGER**  
Senior Associate  
212.468.5951  
mfreudenberger@meridiancapital.com

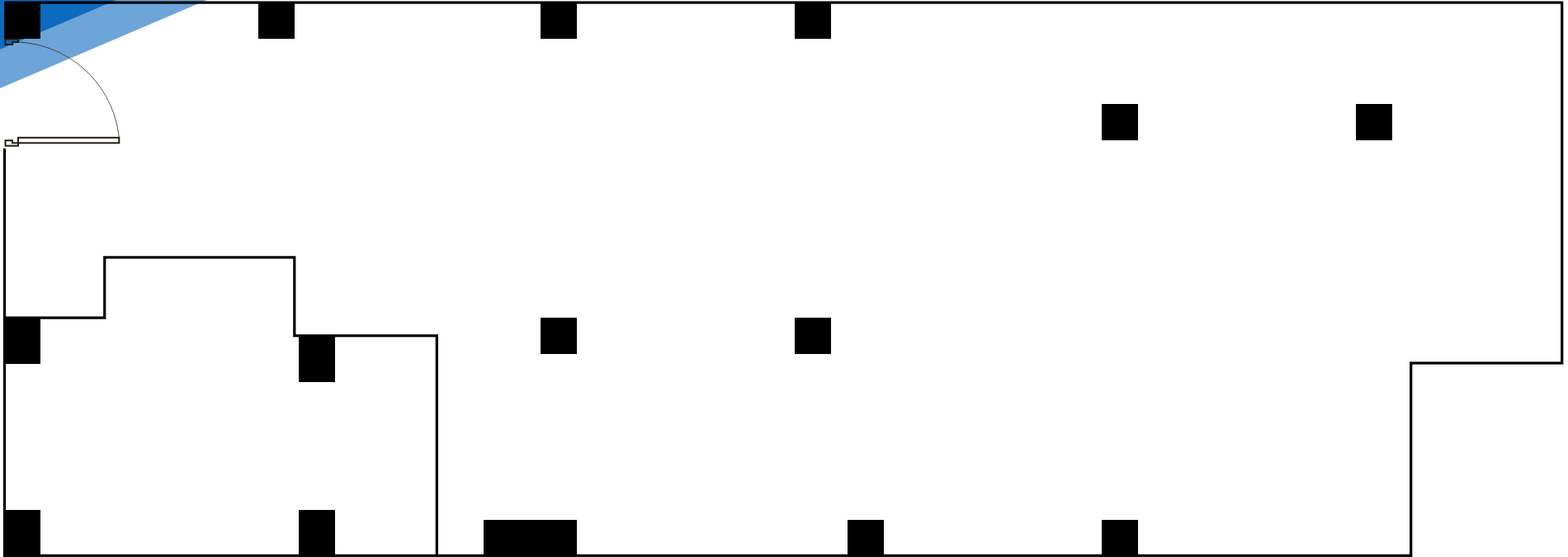


**MERIDIAN**  
RETAIL LEASING

242 WEST 36<sup>TH</sup> STREET  
GARMENT DISTRICT, NYC | Between Seventh and Eighth Avenues

RETAIL FOR LEASE

FLOOR PLAN | GROUND FLOOR



**NOAM AZIZ**  
Senior Director  
212.468.5984  
naziz@meridiancapital.com

**CARSON SHAHRABANI**  
Senior Associate  
212.468.5927  
cshahrabani@meridiancapital.com

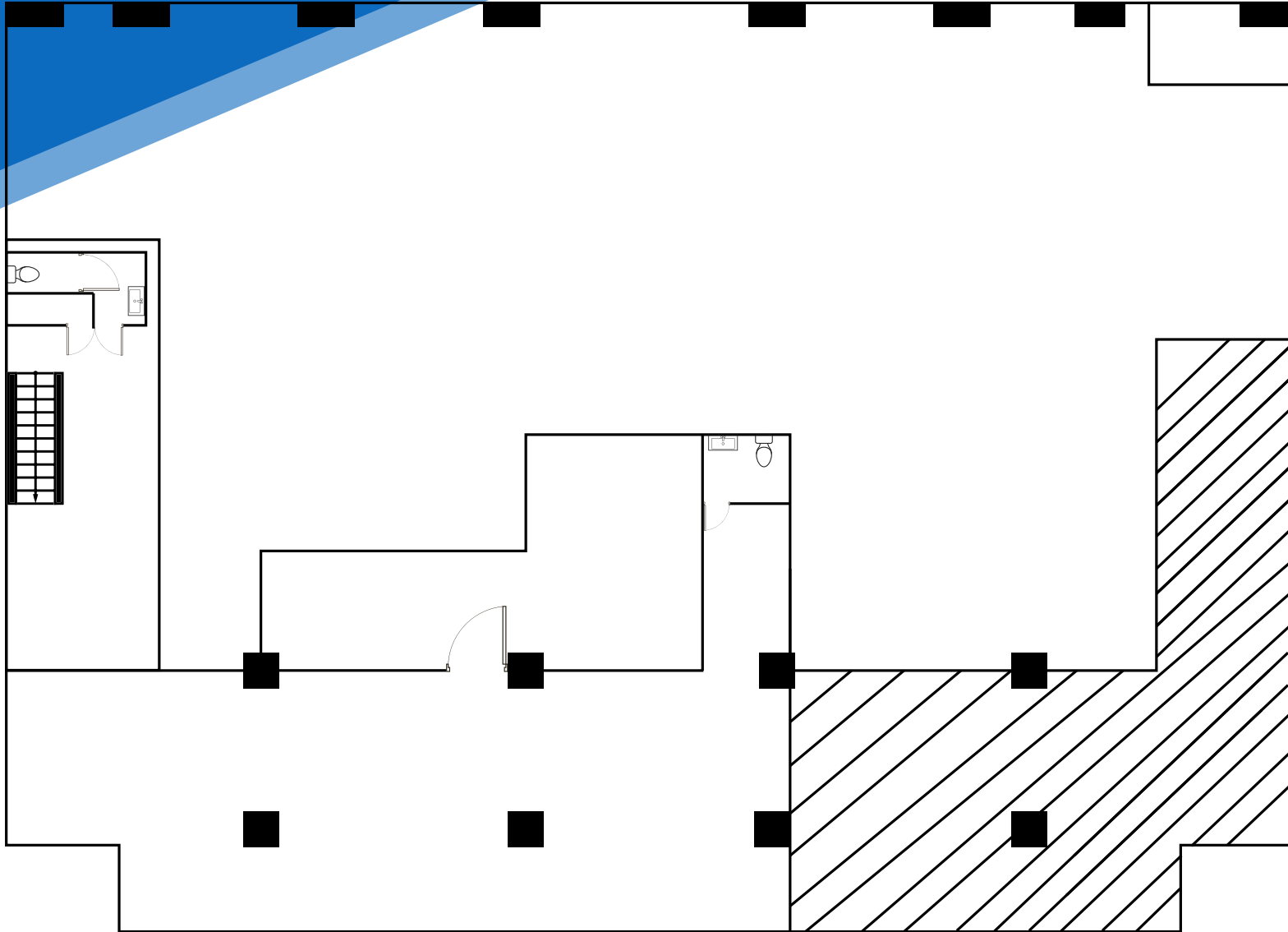
**MAX FREUDENBERGER**  
Senior Associate  
212.468.5951  
mfreudenberg@meridiancapital.com



**MERIDIAN**  
RETAIL LEASING

All information supplied is from sources deemed reliable and is furnished subject to errors, omissions, modifications, removal of the listing from sale or lease, and to any listing conditions, including the rates and manner of payment of commissions for particular offerings imposed by Meridian Capital Group. This information may include estimates and projections prepared by Meridian Capital Group with respect to future events, and these future events may or may not actually occur. Such estimates and projections reflect various assumptions concerning anticipated results. While Meridian Capital Group believes these assumptions are reasonable, there can be no assurance that any of these estimates and projections will be correct. Therefore, actual results may vary materially from these estimates and projections. Any square footage dimensions set forth are approximate.

FLOOR PLAN | MEZZANINE



**NOAM AZIZ**  
Senior Director  
212.468.5984  
naziz@meridiancapital.com

**CARSON SHAHRABANI**  
Senior Associate  
212.468.5927  
cshahrabani@meridiancapital.com

**MAX FREUDENBERGER**  
Senior Associate  
212.468.5951  
mfreudenberg@meridiancapital.com



**MERIDIAN**  
RETAIL LEASING



NEIGHBORS

**NOAM AZIZ**  
 Senior Director  
 212.468.5984  
 naziz@meridiancapital.com

**CARSON SHAHRABANI**  
 Senior Associate  
 212.468.5927  
 cshahrabani@meridiancapital.com

**MAX FREUDENBERGER**  
 Senior Associate  
 212.468.5951  
 mfreudenberger@meridiancapital.com



**MERIDIAN**  
 RETAIL LEASING

All information supplied is from sources deemed reliable and is furnished subject to errors, omissions, modifications, removal of the listing from sale or lease, and to any listing conditions, including the rates and manner of payment of commissions for particular offerings imposed by Meridian Capital Group. This information may include estimates and projections prepared by Meridian Capital Group with respect to future events, and these future events may or may not actually occur. Such estimates and projections reflect various assumptions concerning anticipated results. While Meridian Capital Group believes these assumptions are reasonable, there can be no assurance that any of these estimates and projections will be correct. Therefore, actual results may vary materially from these estimates and projections. Any square footage dimensions set forth are approximate.