

212-40

JAMAICA AVENUE
QUEENS VILLAGE, QUEENS

Off the Corner of Jamaica & Hempstead Avenues



MERIDIAN
RETAIL LEASING



212-40

JAMAICA AVENUE QUEENS VILLAGE, QUEENS

Off the Corner of Jamaica & Hempstead Avenues

RETAIL/OFFICE FOR LEASE

APPROXIMATE SIZE

Ground Floor: 12,000 SF
Second Floor: 11,500 SF
Third Floor: 11,500 SF
Lower Level: 4,500 SF

ASKING RENT

Upon Request

POSSESSION

Arranged

TERM

Negotiable

FRONTAGE

80 FT

COMMENTS

- Full building opportunity for single or multi-tenant use
- Elevator in place with access to lower level
- Large private driveway with loading dock and rolling gate garage
- C8-1 Zoning: broad range of commercial uses allowed (Use Groups 4-14, and 16)
- Located along Jamaica Avenue's main commercial corridor

NEIGHBORS

Key Food • Dunkin' • Spinzar Motors • St. Joseph's Parish • Cookerz Blend • TD Bank • Dollar Tree • Victor's Coffee Shop • UBS Arena

TRANSPORTATION



JOAQUIN CARRILLO

Associate
212.468.5919
jcarrillo@meridiancapital.com

AARON HAROUNIAN

Associate
212.468.5957
aharounian@meridiancapital.com



MERIDIAN
RETAIL LEASING

All information supplied is from sources deemed reliable and is furnished subject to errors, omissions, modifications, removal of the listing from sale or lease, and to any listing conditions, including the rates and manner of payment of commissions for particular offerings imposed by Meridian Capital Group. This information may include estimates and projections prepared by Meridian Capital Group with respect to future events, and these future events may or may not actually occur. Such estimates and projections reflect various assumptions concerning anticipated results. While Meridian Capital Group believes these assumptions are reasonable, there can be no assurance that any of these estimates and projections will be correct. Therefore, actual results may vary materially from these estimates and projections. Any square footage dimensions set forth are approximate.

212-40 JAMAICA AVENUE

QUEENS VILLAGE, QUEENS | Off the Corner of Jamaica and Hempstead Avenues

RETAIL/OFFICE FOR LEASE



INTERIOR

JOAQUIN CARRILLO

Associate
212.468.5919
jcarrillo@meridiancapital.com

AARON HAROUNIAN

Associate
212.468.5957
aharounian@meridiancapital.com



MERIDIAN
RETAIL LEASING

All information supplied is from sources deemed reliable and is furnished subject to errors, omissions, modifications, removal of the listing from sale or lease, and to any listing conditions, including the rates and manner of payment of commissions for particular offerings imposed by Meridian Capital Group. This information may include estimates and projections prepared by Meridian Capital Group with respect to future events, and these future events may or may not actually occur. Such estimates and projections reflect various assumptions concerning anticipated results. While Meridian Capital Group believes these assumptions are reasonable, there can be no assurance that any of these estimates and projections will be correct. Therefore, actual results may vary materially from these estimates and projections. Any square footage dimensions set forth are approximate.

212-40 JAMAICA AVENUE

QUEENS VILLAGE, QUEENS | Off the Corner of Jamaica and Hempstead Avenues

RETAIL/OFFICE FOR LEASE



INTERIOR

JOAQUIN CARRILLO
Associate
212.468.5919
jcarrillo@meridiancapital.com

AARON HAROUNIAN
Associate
212.468.5957
aharounian@meridiancapital.com



MERIDIAN
RETAIL LEASING

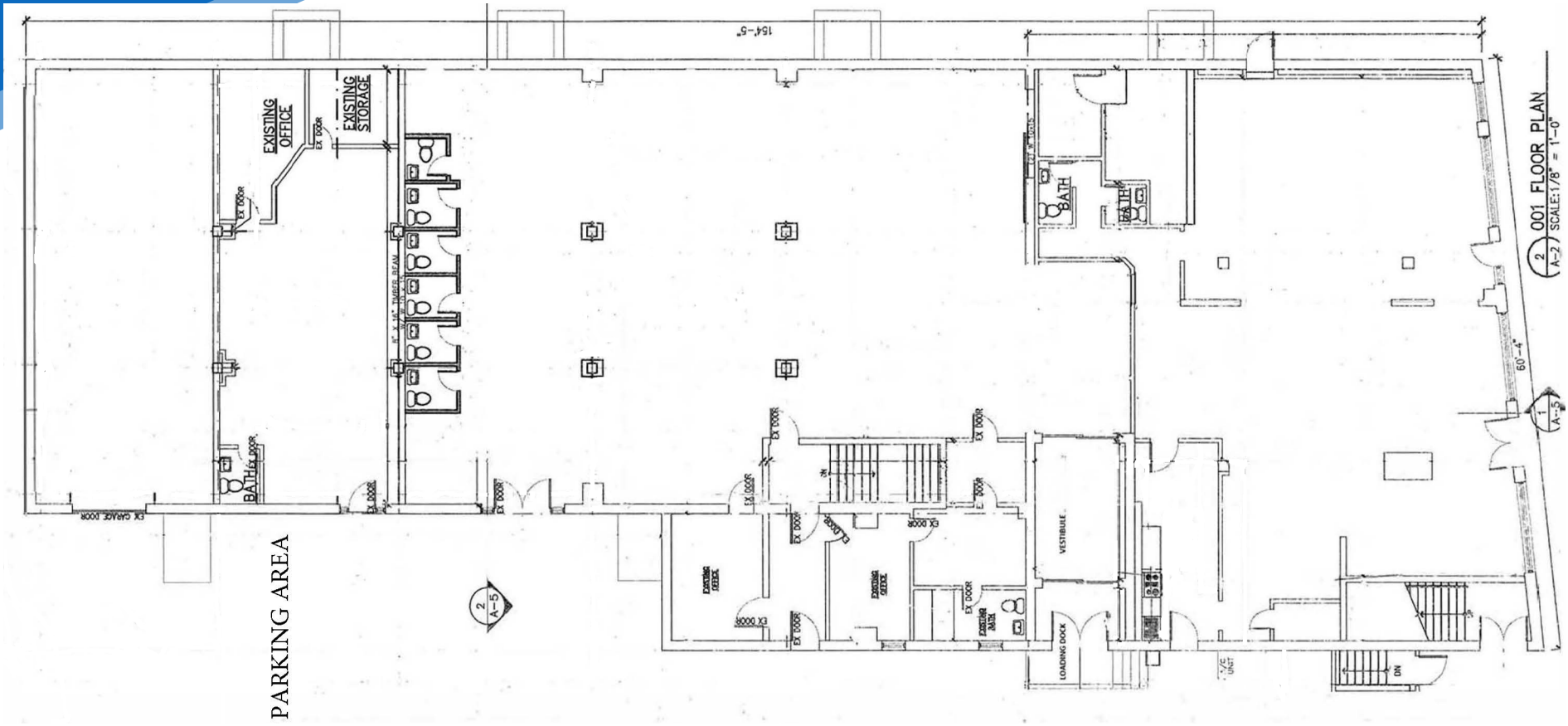
All information supplied is from sources deemed reliable and is furnished subject to errors, omissions, modifications, removal of the listing from sale or lease, and to any listing conditions, including the rates and manner of payment of commissions for particular offerings imposed by Meridian Capital Group. This information may include estimates and projections prepared by Meridian Capital Group with respect to future events, and these future events may or may not actually occur. Such estimates and projections reflect various assumptions concerning anticipated results. While Meridian Capital Group believes these assumptions are reasonable, there can be no assurance that any of these estimates and projections will be correct. Therefore, actual results may vary materially from these estimates and projections. Any square footage dimensions set forth are approximate.

212-40 JAMAICA AVENUE

QUEENS VILLAGE, QUEENS | Off the Corner of Jamaica and Hempstead Avenues

RETAIL/OFFICE FOR LEASE

FLOOR PLAN | GROUND FLOOR



JOAQUIN CARRILLO

Associate
212.468.5919
jcarrillo@meridiancapital.com

AARON HAROUNIAN

Associate
212.468.5957
aharounian@meridiancapital.com



MERIDIAN
RETAIL LEASING

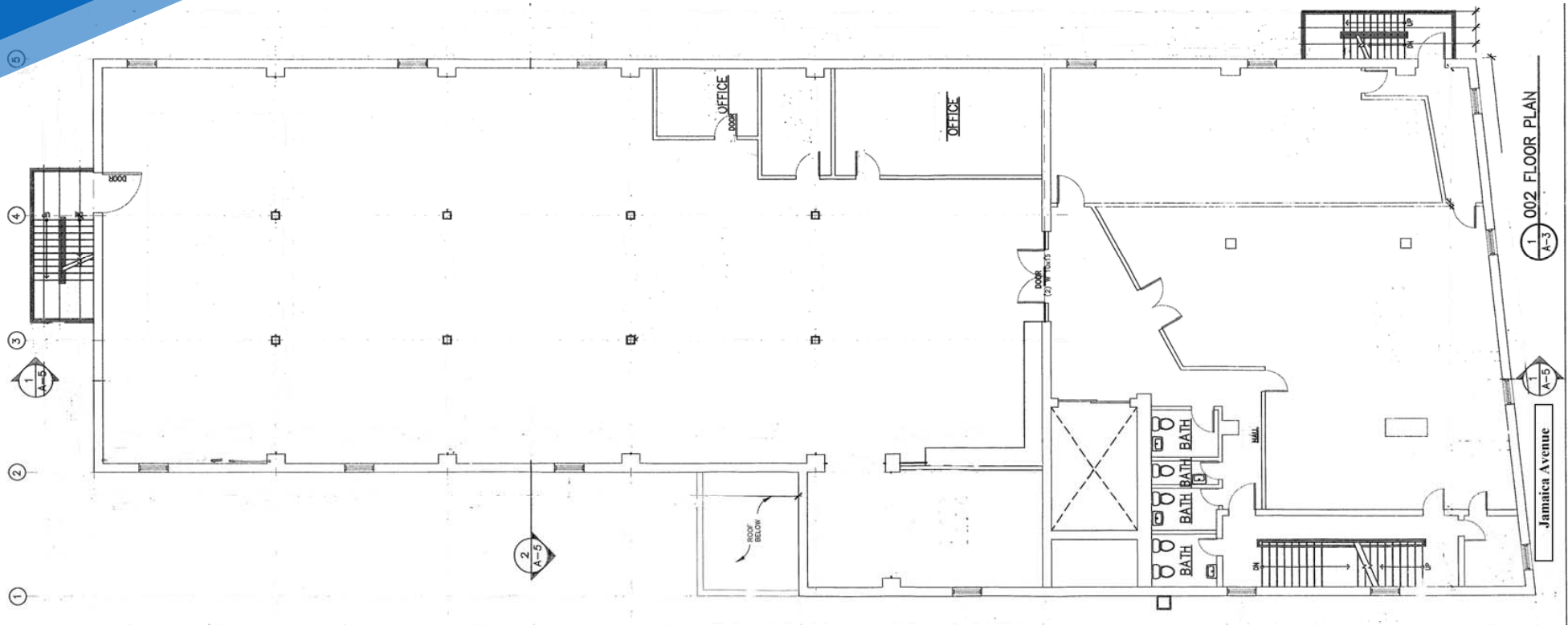
All information supplied is from sources deemed reliable and is furnished subject to errors, omissions, modifications, removal of the listing from sale or lease, and to any listing conditions, including the rates and manner of payment of commissions for particular offerings imposed by Meridian Capital Group. This information may include estimates and projections prepared by Meridian Capital Group with respect to future events, and these future events may or may not actually occur. Such estimates and projections reflect various assumptions concerning anticipated results. While Meridian Capital Group believes these assumptions are reasonable, there can be no assurance that any of these estimates and projections will be correct. Therefore, actual results may vary materially from these estimates and projections. Any square footage dimensions set forth are approximate.

212-40 JAMAICA AVENUE

QUEENS VILLAGE, QUEENS | Off the Corner of Jamaica and Hempstead Avenues

RETAIL/OFFICE FOR LEASE

FLOOR PLAN | SECOND FLOOR



JOAQUIN CARRILLO

Associate
212.468.5919
jcarrillo@meridiancapital.com

AARON HAROUNIAN

Associate
212.468.5957
aharounian@meridiancapital.com



MERIDIAN
RETAIL LEASING

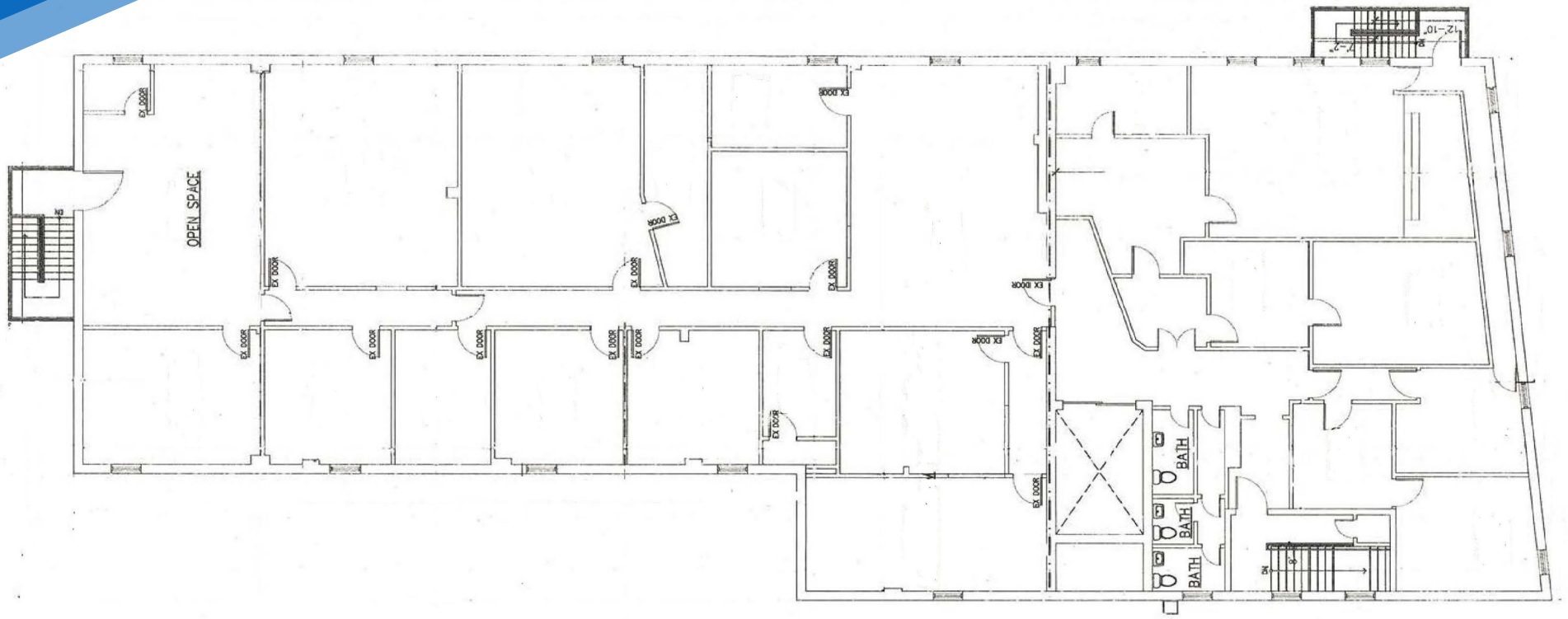
All information supplied is from sources deemed reliable and is furnished subject to errors, omissions, modifications, removal of the listing from sale or lease, and to any listing conditions, including the rates and manner of payment of commissions for particular offerings imposed by Meridian Capital Group. This information may include estimates and projections prepared by Meridian Capital Group with respect to future events, and these future events may or may not actually occur. Such estimates and projections reflect various assumptions concerning anticipated results. While Meridian Capital Group believes these assumptions are reasonable, there can be no assurance that any of these estimates and projections will be correct. Therefore, actual results may vary materially from these estimates and projections. Any square footage dimensions set forth are approximate.

212-40 JAMAICA AVENUE

QUEENS VILLAGE, QUEENS | Off the Corner of Jamaica and Hempstead Avenues

RETAIL/OFFICE FOR LEASE

FLOOR PLAN | THIRD FLOOR



JOAQUIN CARRILLO
Associate
212.468.5919
jcarrillo@meridiancapital.com

AARON HAROUNIAN
Associate
212.468.5957
aharounian@meridiancapital.com



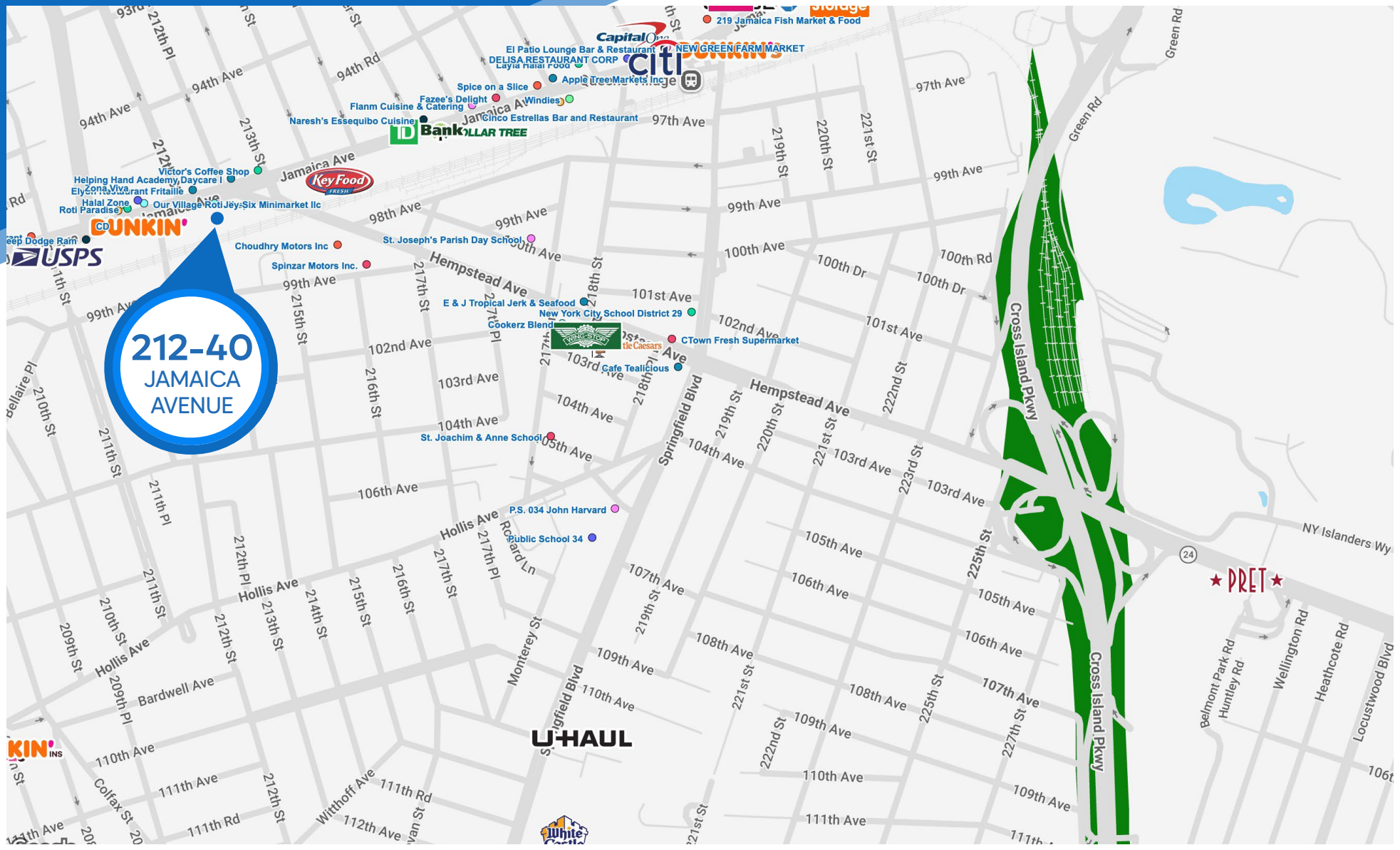
MERIDIAN
RETAIL LEASING

All information supplied is from sources deemed reliable and is furnished subject to errors, omissions, modifications, removal of the listing from sale or lease, and to any listing conditions, including the rates and manner of payment of commissions for particular offerings imposed by Meridian Capital Group. This information may include estimates and projections prepared by Meridian Capital Group with respect to future events, and these future events may or may not actually occur. Such estimates and projections reflect various assumptions concerning anticipated results. While Meridian Capital Group believes these assumptions are reasonable, there can be no assurance that any of these estimates and projections will be correct. Therefore, actual results may vary materially from these estimates and projections. Any square footage dimensions set forth are approximate.

212-40 JAMAICA AVENUE

QUEENS VILLAGE, QUEENS | Off the Corner of Jamaica and Hempstead Avenues

RETAIL/OFFICE FOR LEASE



NEIGHBORS

JOAQUIN CARRILLO
Associate
212.468.5919
jcarrillo@meridiancapital.com

AARON HAROUNIAN
Associate
212.468.5957
aharounian@meridiancapital.com



MERIDIAN
RETAIL LEASING

All information supplied is from sources deemed reliable and is furnished subject to errors, omissions, modifications, removal of the listing from sale or lease, and to any listing conditions, including the rates and manner of payment of commissions for particular offerings imposed by Meridian Capital Group. This information may include estimates and projections prepared by Meridian Capital Group with respect to future events, and these future events may or may not actually occur. Such estimates and projections reflect various assumptions concerning anticipated results. While Meridian Capital Group believes these assumptions are reasonable, there can be no assurance that any of these estimates and projections will be correct. Therefore, actual results may vary materially from these estimates and projections. Any square footage dimensions set forth are approximate.