

# 120

## ST. MARKS PLACE EAST VILLAGE, NYC

Between Avenue A & First Avenue

RETAIL FOR LEASE

### APPROXIMATE SIZE

Lower Level: 1,300 SF

### ASKING RENT

\$7,500/Month

### POSSESSION

Immediate

### TERM

Negotiable

### FRONTAGE

12 FT

### COMMENTS

- Charming East Village storefront opportunity along iconic St. Marks Place
- Layout ideal for boutique retail, café, gallery, or wellness
- Positioned among established restaurants, nightlife, and local retail operators with consistent foot traffic
- Ideal opportunity for a long-term neighborhood-focused operator seeking presence in a highly trafficked corridor

### NEIGHBORS

Bua • Crispiano • Mokyo • Ten Degrees • Lucy's • The Lions Bar & Grill • The Grafton • Maza • Goodnight Sonny • Thursday Kitchen • Ruffian • Frankie's Pasta Bar • Electric Burrito • Rowdy Rooster

### TRANSPORTATION



PROPERTY INFORMATION

### NOAM AZIZ

Senior Director  
212.468.5984  
naziz@meridiancapital.com

### CARSON SHAHRABANI

Senior Associate  
212.468.5927  
cshahrabani@meridiancapital.com



**MERIDIAN**  
RETAIL LEASING

All information supplied is from sources deemed reliable and is furnished subject to errors, omissions, modifications, removal of the listing from sale or lease, and to any listing conditions, including the rates and manner of payment of commissions for particular offerings imposed by Meridian Capital Group. This information may include estimates and projections prepared by Meridian Capital Group with respect to future events, and these future events may or may not actually occur. Such estimates and projections reflect various assumptions concerning anticipated results. While Meridian Capital Group believes these assumptions are reasonable, there can be no assurance that any of these estimates and projections will be correct. Therefore, actual results may vary materially from these estimates and projections. Any square footage dimensions set forth are approximate.

# 120 ST. MARKS PLACE

EAST VILLAGE, NYC | Between Avenue A and First Avenue

RETAIL FOR LEASE



INTERIOR

**NOAM AZIZ**  
Senior Director  
212.468.5984  
naziz@meridiancapital.com

**CARSON SHAHRABANI**  
Senior Associate  
212.468.5927  
cshahrabani@meridiancapital.com



**MERIDIAN**  
RETAIL LEASING

All information supplied is from sources deemed reliable and is furnished subject to errors, omissions, modifications, removal of the listing from sale or lease, and to any listing conditions, including the rates and manner of payment of commissions for particular offerings imposed by Meridian Capital Group. This information may include estimates and projections prepared by Meridian Capital Group with respect to future events, and these future events may or may not actually occur. Such estimates and projections reflect various assumptions concerning anticipated results. While Meridian Capital Group believes these assumptions are reasonable, there can be no assurance that any of these estimates and projections will be correct. Therefore, actual results may vary materially from these estimates and projections. Any square footage dimensions set forth are approximate.

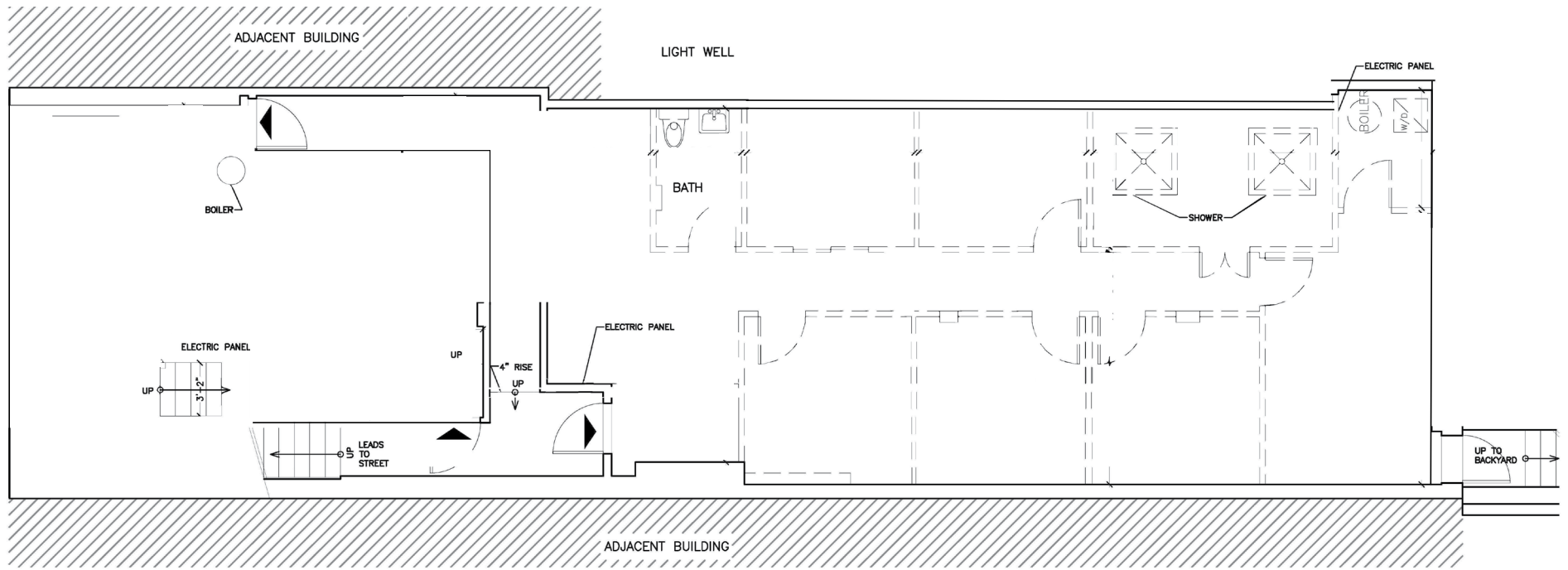
# 120 ST. MARKS PLACE

EAST VILLAGE, NYC | Between Avenue A and First Avenue

RETAIL FOR LEASE

FLOOR PLAN

ST MARKS



**NOAM AZIZ**  
Senior Director  
212.468.5984  
naziz@meridiancapital.com

**CARSON SHAHRABANI**  
Senior Associate  
212.468.5927  
cshahrabani@meridiancapital.com



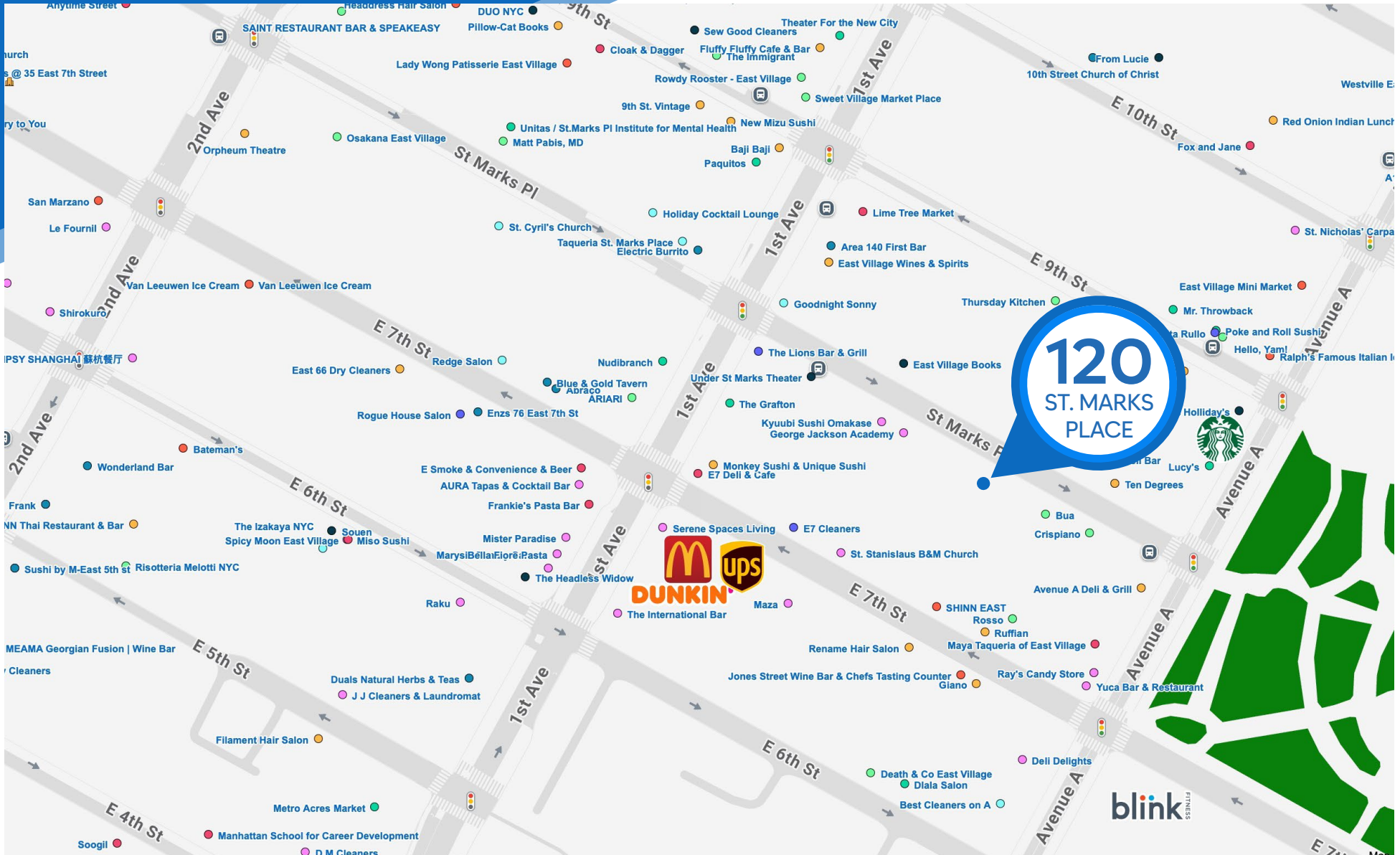
**MERIDIAN**  
RETAIL LEASING

All information supplied is from sources deemed reliable and is furnished subject to errors, omissions, modifications, removal of the listing from sale or lease, and to any listing conditions, including the rates and manner of payment of commissions for particular offerings imposed by Meridian Capital Group. This information may include estimates and projections prepared by Meridian Capital Group with respect to future events, and these future events may or may not actually occur. Such estimates and projections reflect various assumptions concerning anticipated results. While Meridian Capital Group believes these assumptions are reasonable, there can be no assurance that any of these estimates and projections will be correct. Therefore, actual results may vary materially from these estimates and projections. Any square footage dimensions set forth are approximate.

# 120 ST. MARKS PLACE

EAST VILLAGE, NYC | Between Avenue A and First Avenue

RETAIL FOR LEASE



NEIGHBORS

**NOAM AZIZ**  
Senior Director  
212.468.5984  
naziz@meridiancapital.com

**CARSON SHAHRABANI**  
Senior Associate  
212.468.5927  
cshahrabani@meridiancapital.com



**MERIDIAN**  
RETAIL LEASING

All information supplied is from sources deemed reliable and is furnished subject to errors, omissions, modifications, removal of the listing from sale or lease, and to any listing conditions, including the rates and manner of payment of commissions for particular offerings imposed by Meridian Capital Group. This information may include estimates and projections prepared by Meridian Capital Group with respect to future events, and these future events may or may not actually occur. Such estimates and projections reflect various assumptions concerning anticipated results. While Meridian Capital Group believes these assumptions are reasonable, there can be no assurance that any of these estimates and projections will be correct. Therefore, actual results may vary materially from these estimates and projections. Any square footage dimensions set forth are approximate.