

115

EAST 57TH STREET MIDTOWN EAST, NYC

Between Lexington & Park Avenues

RESTAURANT FOR LEASE

APPROXIMATE SIZE

2,205 SF (Split)

ASKING RENT

Upon Request

TERM

10-15 Years

POSSESSION

Immediate

COMMENTS

- Turn-key restaurant with all FF&E
- Fully vented with gas and hood in place
- Large seating area and expansive kitchen
- Prominent street signage available
- Ideal for restaurateur's seeking flagship location

NEIGHBORS

Saks Off Fifth • Rocco Steakhouse • Bloomingdale's Reserve Cut • Aston Martin • Joe & The Juice • Chopt • Il Mulino • Tao • Serafina • Wolford • Chanel • Dior • Piccola Cucina • Amali • Oliver Peoples

TRANSPORTATION

N Q R W 4 5 6 E F M



PROPERTY INFORMATION

NOAM AZIZ

Senior Director
212.468.5984
naziz@meridiancapital.com

CARSON SHAHRABANI

Senior Associate
212.468.5927
cshahrabani@meridiancapital.com



MERIDIAN
RETAIL LEASING

All information supplied is from sources deemed reliable and is furnished subject to errors, omissions, modifications, removal of the listing from sale or lease, and to any listing conditions, including the rates and manner of payment of commissions for particular offerings imposed by Meridian Capital Group. This information may include estimates and projections prepared by Meridian Capital Group with respect to future events, and these future events may or may not actually occur. Such estimates and projections reflect various assumptions concerning anticipated results. While Meridian Capital Group believes these assumptions are reasonable, there can be no assurance that any of these estimates and projections will be correct. Therefore, actual results may vary materially from these estimates and projections. Any square footage dimensions set forth are approximate.

115 EAST 57TH STREET

MIDTOWN EAST, NYC | Between Lexington and Park Avenues

RESTAURANT FOR LEASE



INTERIOR

NOAM AZIZ
Senior Director
212.468.5984
naziz@meridiancapital.com

CARSON SHAHRABANI
Senior Associate
212.468.5927
cshahrabani@meridiancapital.com



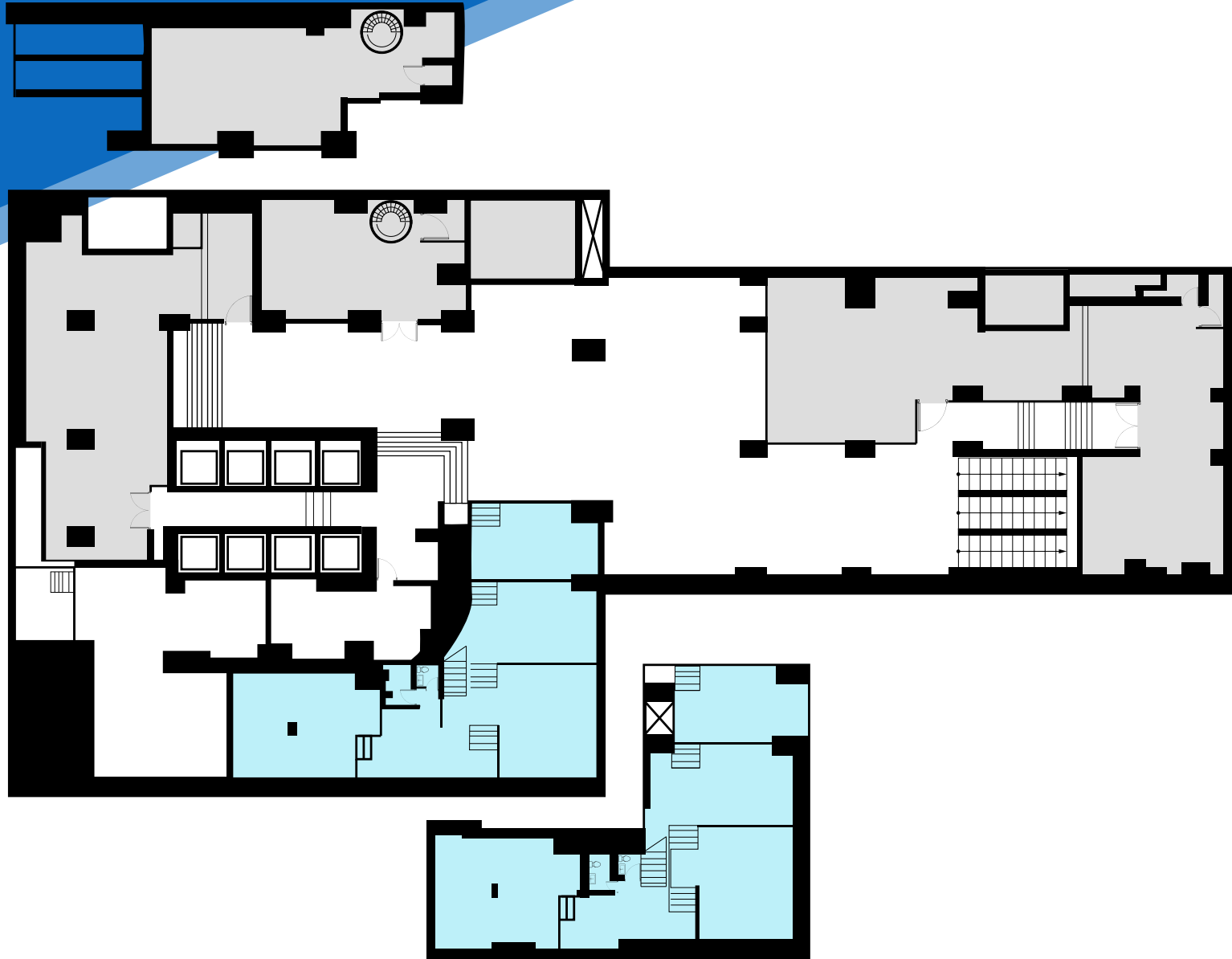
MERIDIAN
RETAIL LEASING

All information supplied is from sources deemed reliable and is furnished subject to errors, omissions, modifications, removal of the listing from sale or lease, and to any listing conditions, including the rates and manner of payment of commissions for particular offerings imposed by Meridian Capital Group. This information may include estimates and projections prepared by Meridian Capital Group with respect to future events, and these future events may or may not actually occur. Such estimates and projections reflect various assumptions concerning anticipated results. While Meridian Capital Group believes these assumptions are reasonable, there can be no assurance that any of these estimates and projections will be correct. Therefore, actual results may vary materially from these estimates and projections. Any square footage dimensions set forth are approximate.

115 EAST 57TH STREET

MIDTOWN EAST, NYC | Between Lexington and Park Avenues

RESTAURANT FOR LEASE



FLOOR PLAN

NOAM AZIZ

Senior Director
212.468.5984
naziz@meridiancapital.com

CARSON SHAHRABANI

Senior Associate
212.468.5927
cshahrabani@meridiancapital.com



MERIDIAN
RETAIL LEASING

All information supplied is from sources deemed reliable and is furnished subject to errors, omissions, modifications, removal of the listing from sale or lease, and to any listing conditions, including the rates and manner of payment of commissions for particular offerings imposed by Meridian Capital Group. This information may include estimates and projections prepared by Meridian Capital Group with respect to future events, and these future events may or may not actually occur. Such estimates and projections reflect various assumptions concerning anticipated results. While Meridian Capital Group believes these assumptions are reasonable, there can be no assurance that any of these estimates and projections will be correct. Therefore, actual results may vary materially from these estimates and projections. Any square footage dimensions set forth are approximate.

115 EAST 57TH STREET
 MIDTOWN EAST, NYC | Between Lexington and Park Avenues

RESTAURANT FOR LEASE



NEIGHBORS

NOAM AZIZ
 Senior Director
 212.468.5984
 naziz@meridiancapital.com

CARSON SHAHRABANI
 Senior Associate
 212.468.5927
 cshahrabani@meridiancapital.com



MERIDIAN
 RETAIL LEASING

All information supplied is from sources deemed reliable and is furnished subject to errors, omissions, modifications, removal of the listing from sale or lease, and to any listing conditions, including the rates and manner of payment of commissions for particular offerings imposed by Meridian Capital Group. This information may include estimates and projections prepared by Meridian Capital Group with respect to future events, and these future events may or may not actually occur. Such estimates and projections reflect various assumptions concerning anticipated results. While Meridian Capital Group believes these assumptions are reasonable, there can be no assurance that any of these estimates and projections will be correct. Therefore, actual results may vary materially from these estimates and projections. Any square footage dimensions set forth are approximate.