

# 107

## CHAMBERS STREET TRIBECA, NYC

Between Church Street & West Broadway

RETAIL FOR LEASE

### APPROXIMATE SIZE

Lobby/Street-Level Entry: 1,000 SF  
Lower Level: 8,250 SF  
Sub-Lower Level: 6,350 SF

**ASKING RENT**  
\$25,000/Month

**POSSESSION**  
Immediate

**TERM**  
Negotiable

**FRONTAGE**  
20 FT

### COMMENTS

- Former "Tribeca Health & Fitness" space with existing fitness-oriented infrastructure
- Rare large-scale multi-level configuration in prime Tribeca location
- Strong pedestrian traffic
- Vertical layout
- Ideal for fitness, wellness, medical use

### NEIGHBORS

Own Your Fitness • JR Sushi • Sweetgreen • Hungry Ghost Coffee • Reade Street Prep • Serafina Tribeca • Smyth Tribeca • Club Pilates • Greenwich St. Jewelers • Artesano

### TRANSPORTATION



### NOAM AZIZ

Senior Director  
212.468.5984  
naziz@meridiancapital.com

### CARSON SHAHRABANI

Senior Associate  
212.468.5927  
cshahrabani@meridiancapital.com



**MERIDIAN**  
RETAIL LEASING

All information supplied is from sources deemed reliable and is furnished subject to errors, omissions, modifications, removal of the listing from sale or lease, and to any listing conditions, including the rates and manner of payment of commissions for particular offerings imposed by Meridian Capital Group. This information may include estimates and projections prepared by Meridian Capital Group with respect to future events, and these future events may or may not actually occur. Such estimates and projections reflect various assumptions concerning anticipated results. While Meridian Capital Group believes these assumptions are reasonable, there can be no assurance that any of these estimates and projections will be correct. Therefore, actual results may vary materially from these estimates and projections. Any square footage dimensions set forth are approximate.

# 107 CHAMBERS STREET

TRIBECA, NYC | Between Church Street and West Broadway

RETAIL FOR LEASE



INTERIOR | LOWER LEVEL

**NOAM AZIZ**  
Senior Director  
212.468.5984  
naziz@meridiancapital.com

**CARSON SHAHRABANI**  
Senior Associate  
212.468.5927  
cshahrabani@meridiancapital.com



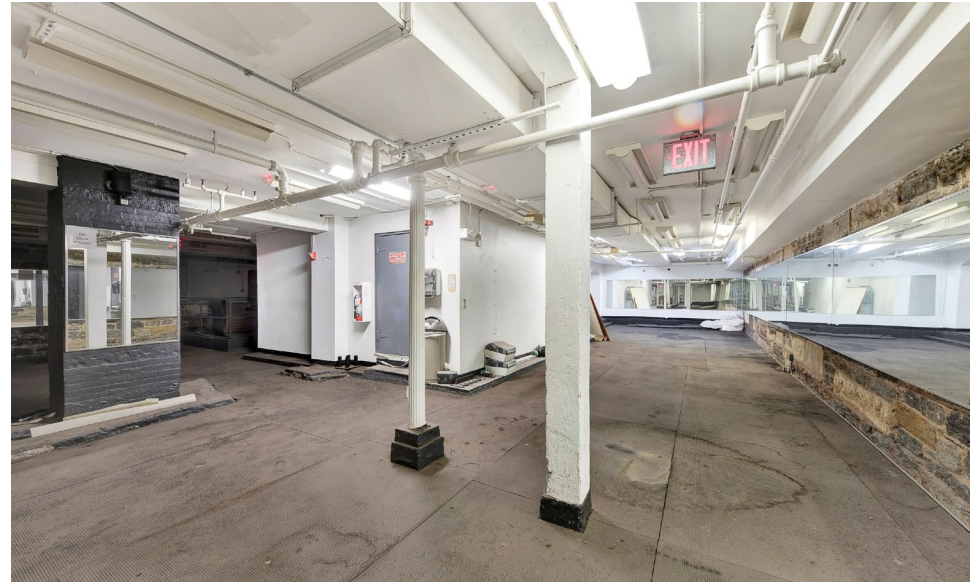
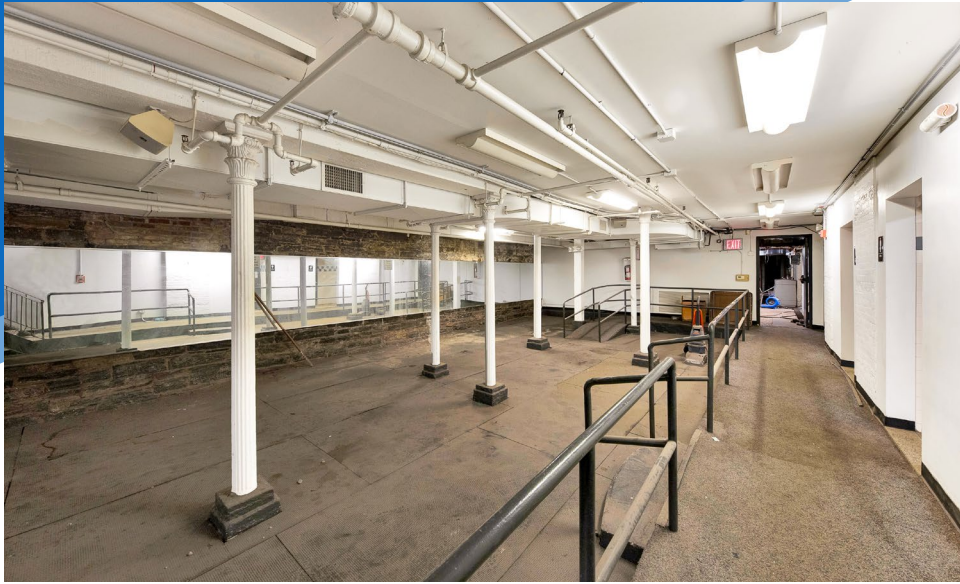
**MERIDIAN**  
RETAIL LEASING

All information supplied is from sources deemed reliable and is furnished subject to errors, omissions, modifications, removal of the listing from sale or lease, and to any listing conditions, including the rates and manner of payment of commissions for particular offerings imposed by Meridian Capital Group. This information may include estimates and projections prepared by Meridian Capital Group with respect to future events, and these future events may or may not actually occur. Such estimates and projections reflect various assumptions concerning anticipated results. While Meridian Capital Group believes these assumptions are reasonable, there can be no assurance that any of these estimates and projections will be correct. Therefore, actual results may vary materially from these estimates and projections. Any square footage dimensions set forth are approximate.

# 107 CHAMBERS STREET

TRIBECA, NYC | Between Church Street and West Broadway

RETAIL FOR LEASE



INTERIOR: SUB-LOWER LEVEL

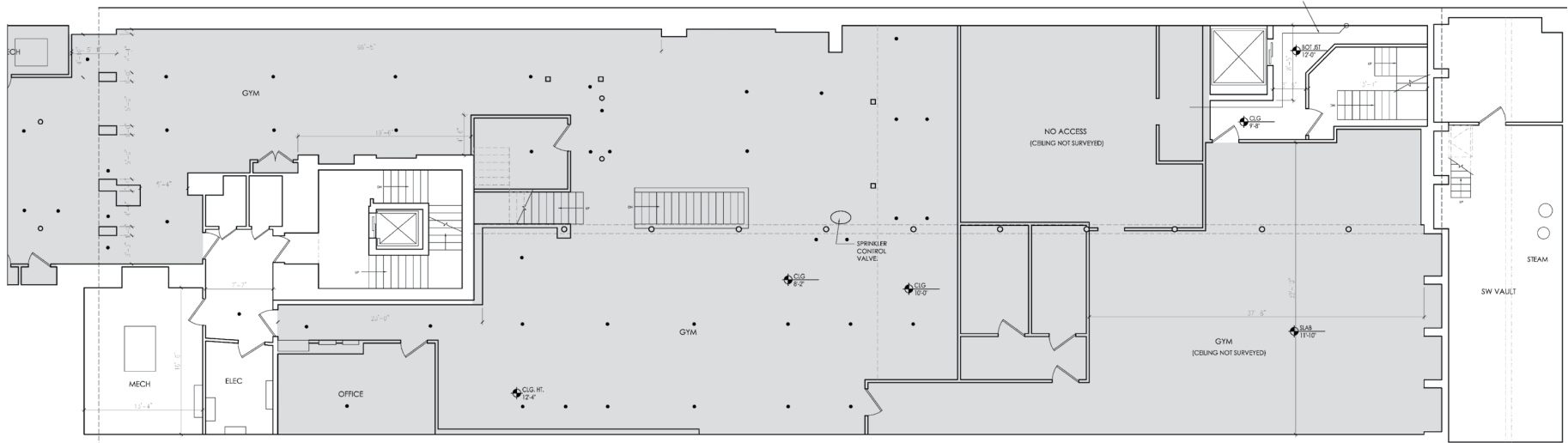
**NOAM AZIZ**  
Senior Director  
212.468.5984  
naziz@meridiancapital.com

**CARSON SHAHRABANI**  
Senior Associate  
212.468.5927  
cshahrabani@meridiancapital.com

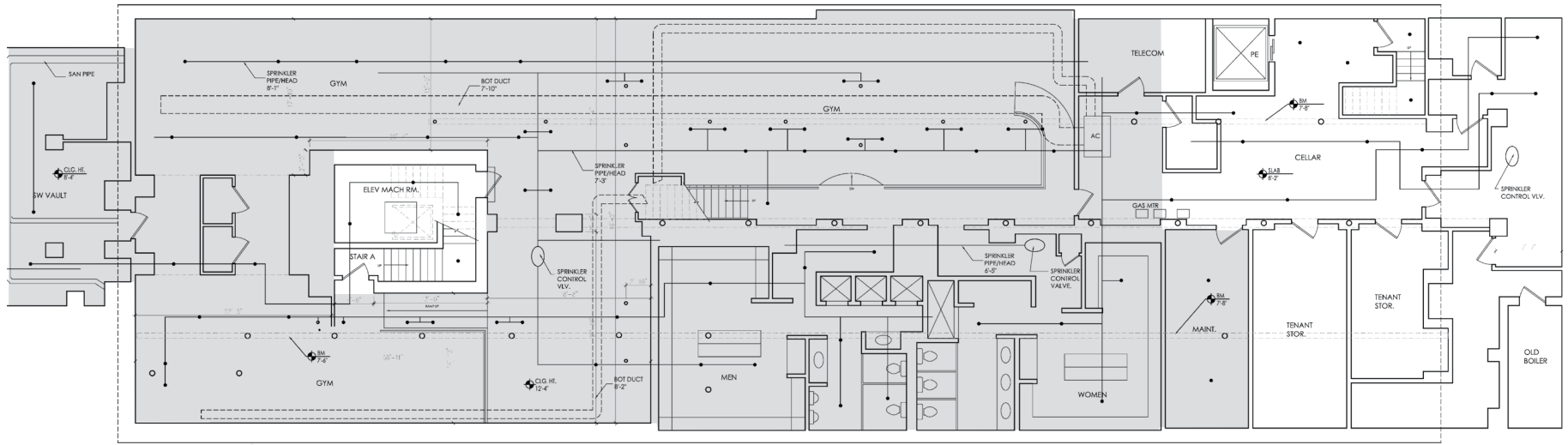


**MERIDIAN**  
RETAIL LEASING

All information supplied is from sources deemed reliable and is furnished subject to errors, omissions, modifications, removal of the listing from sale or lease, and to any listing conditions, including the rates and manner of payment of commissions for particular offerings imposed by Meridian Capital Group. This information may include estimates and projections prepared by Meridian Capital Group with respect to future events, and these future events may or may not actually occur. Such estimates and projections reflect various assumptions concerning anticipated results. While Meridian Capital Group believes these assumptions are reasonable, there can be no assurance that any of these estimates and projections will be correct. Therefore, actual results may vary materially from these estimates and projections. Any square footage dimensions set forth are approximate.



LOWER LEVEL



SUB-LOWER LEVEL

**NOAM AZIZ**  
Senior Director  
212.468.5984  
naziz@meridiancapital.com

**CARSON SHAHRABANI**  
Senior Associate  
212.468.5927  
cshahrabani@meridiancapital.com



**MERIDIAN**  
RETAIL LEASING

# 107 CHAMBERS STREET

TRIBECA, NYC | Between Church Street and West Broadway

RETAIL FOR LEASE



NEIGHBORS

## NOAM AZIZ

Senior Director  
212.468.5984  
naziz@meridiancapital.com

## CARSON SHAHRABANI

Senior Associate  
212.468.5927  
cshahrabani@meridiancapital.com



**MERIDIAN**  
RETAIL LEASING

All information supplied is from sources deemed reliable and is furnished subject to errors, omissions, modifications, removal of the listing from sale or lease, and to any listing conditions, including the rates and manner of payment of commissions for particular offerings imposed by Meridian Capital Group. This information may include estimates and projections prepared by Meridian Capital Group with respect to future events, and these future events may or may not actually occur. Such estimates and projections reflect various assumptions concerning anticipated results. While Meridian Capital Group believes these assumptions are reasonable, there can be no assurance that any of these estimates and projections will be correct. Therefore, actual results may vary materially from these estimates and projections. Any square footage dimensions set forth are approximate.