

566

WILSON AVENUE BUSHWICK, BROOKLYN

Between Eldert & Covert Streets

RETAIL/RESTAURANT FOR LEASE



APPROXIMATE SIZE

1,550 SF + Lower Level

ASKING RENT

~~\$6,000/Month~~ Reduced
\$5,500/Month

POSSESSION

Immediate

TERM

10 Years

FRONTAGE

15 FT

COMMENTS

- Retail space that recently underwent renovation with full glass frontage
- Commercial gas line and ADA-compliant bathroom in place
- HVAC system installed in lower level for storage or prep use
- Layout suitable for restaurant, café, retail, and service uses

NEIGHBORS

New Texas Chicken & Grill • One Way Deli • Big Apple Grocery • Home Run Barbershop • Money Cat Vietnamese American • Family Dollar • Witching Hour • Punta Cana Sports Bar

TRANSPORTATION

L

NOAM AZIZ

Senior Director
212.468.5984
naziz@meridiancapital.com

JOAQUIN CARRILLO

Associate
212.468.5919
jcarrillo@meridiancapital.com

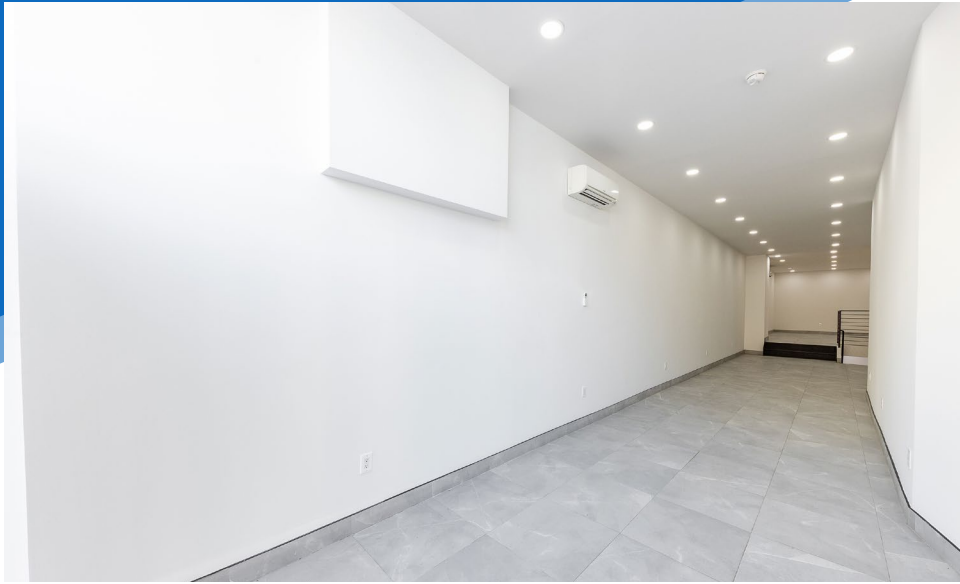
DANIEL ZACAİM

Associate
212.468.5910
dzacaim@meridiancapital.com



MERIDIAN
RETAIL LEASING

All information supplied is from sources deemed reliable and is furnished subject to errors, omissions, modifications, removal of the listing from sale or lease, and to any listing conditions, including the rates and manner of payment of commissions for particular offerings imposed by Meridian Capital Group. This information may include estimates and projections prepared by Meridian Capital Group with respect to future events, and these future events may or may not actually occur. Such estimates and projections reflect various assumptions concerning anticipated results. While Meridian Capital Group believes these assumptions are reasonable, there can be no assurance that any of these estimates and projections will be correct. Therefore, actual results may vary materially from these estimates and projections. Any square footage dimensions set forth are approximate.



INTERIOR

NOAM AZIZ
Senior Director
212.468.5984
naziz@meridiancapital.com

JOAQUIN CARRILLO
Associate
212.468.5919
jcarrillo@meridiancapital.com

DANIEL ZACAİM
Associate
212.468.5910
dzacaim@meridiancapital.com

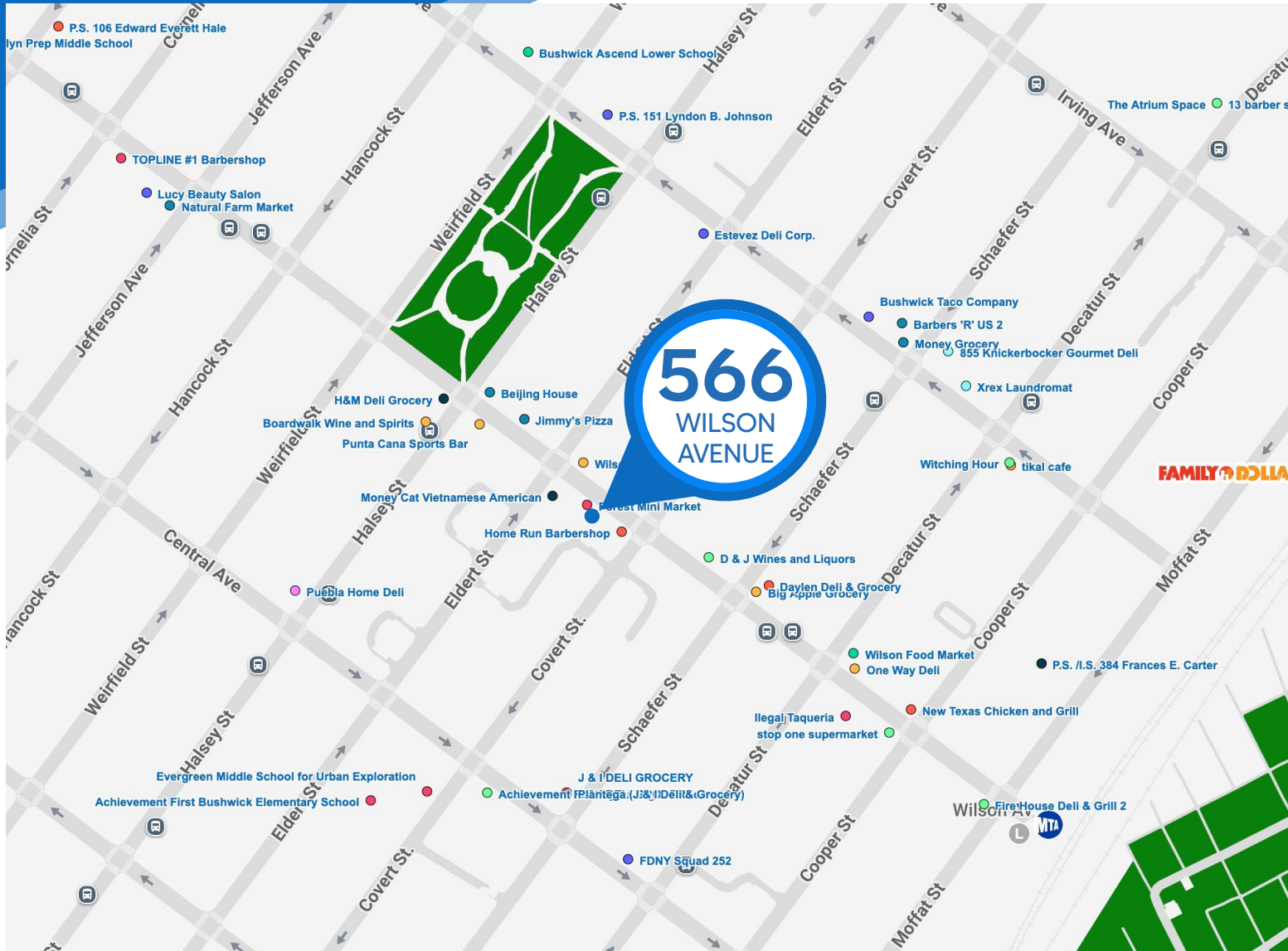


MERIDIAN
RETAIL LEASING

566 WILSON AVENUE

BUSHWICK, BROOKLYN | Between Eldert and Covert Streets

RETAIL/RESTAURANT FOR LEASE



NEIGHBORS

NOAM AZIZ
Senior Director
212.468.5984
naziz@meridiancapital.com

JOAQUIN CARRILLO
Associate
212.468.5919
jcarrillo@meridiancapital.com

DANIEL ZACAİM
Associate
212.468.5910
dzacaım@meridiancapital.com



MERIDIAN
RETAIL LEASING

All information supplied is from sources deemed reliable and is furnished subject to errors, omissions, modifications, removal of the listing from sale or lease, and to any listing conditions, including the rates and manner of payment of commissions for particular offerings imposed by Meridian Capital Group. This information may include estimates and projections prepared by Meridian Capital Group with respect to future events, and these future events may or may not actually occur. Such estimates and projections reflect various assumptions concerning anticipated results. While Meridian Capital Group believes these assumptions are reasonable, there can be no assurance that any of these estimates and projections will be correct. Therefore, actual results may vary materially from these estimates and projections. Any square footage dimensions set forth are approximate.