

499

EVERGREEN AVENUE BUSHWICK, BROOKLYN

Corner of Evergreen & Putnam Avenues

COMMUNITY FACILITY FOR LEASE

APPROXIMATE SIZE

Ground Floor: 2,250 SF
Selling Lower Level: 1,750 SF
Total: 4,000 SF

ASKING RENT

\$14,000/Month

POSSESSION

Immediate

TERM

Negotiable

FRONTAGE

30 FT

COMMENTS

- Previously "The Learning Factory" daycare space
- ADA-compliant throughout with multiple means of egress
- Elevator access from the ground floor to the lower level
- Located within a growing and steady Brooklyn community with a strong residential population surrounding
- High ceilings
- Efficient layout for medical, educational, non-profit, and other community facility uses

NEIGHBORS

Evergreen Baptist Church • PS 299 Thomas
Warren Field • Bar Cornelia • Bella Bella Hair
Salon • Ma's Restaurant • RI Aguila Mini Market

TRANSPORTATION



NOAM AZIZ

Senior Director
212.468.5984
naziz@meridiancapital.com

MAX FREUDENBERGER

Senior Associate
212.468.5951
mfruedenberger@meridiancapital.com

SHAYA KATZ

Associate
212.468.5991
shaya.katz@meridiancapital.com



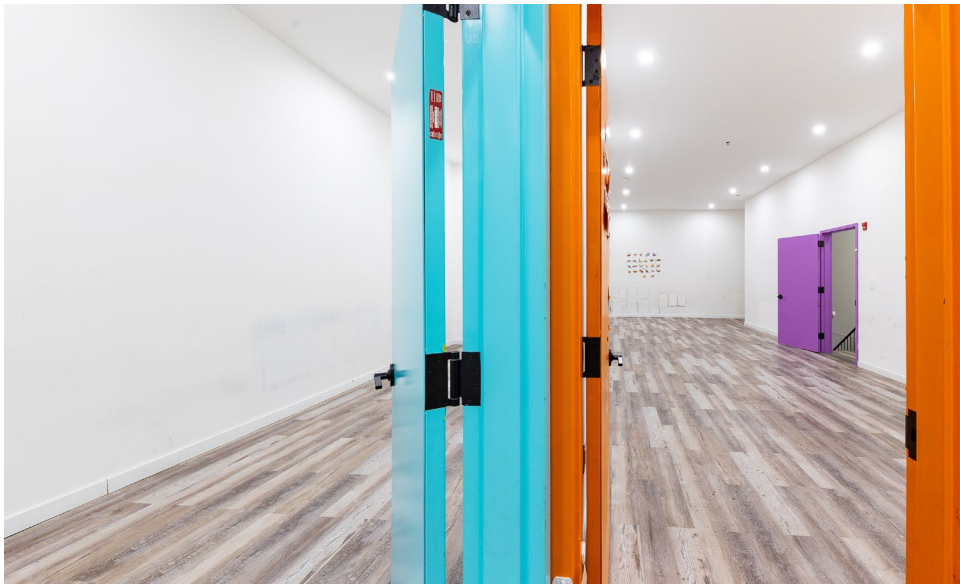
MERIDIAN
RETAIL LEASING

All information supplied is from sources deemed reliable and is furnished subject to errors, omissions, modifications, removal of the listing from sale or lease, and to any listing conditions, including the rates and manner of payment of commissions for particular offerings imposed by Meridian Capital Group. This information may include estimates and projections prepared by Meridian Capital Group with respect to future events, and these future events may or may not actually occur. Such estimates and projections reflect various assumptions concerning anticipated results. While Meridian Capital Group believes these assumptions are reasonable, there can be no assurance that any of these estimates and projections will be correct. Therefore, actual results may vary materially from these estimates and projections. Any square footage dimensions set forth are approximate.

499 EVERGREEN AVENUE

BUSHWICK, BROOKLYN | Corner of Evergreen and Putnam Avenues

COMMUNITY FACILITY FOR LEASE



INTERIOR

NOAM AZIZ
Senior Director
212.468.5984
naziz@meridiancapital.com

MAX FREUDENBERGER
Senior Associate
212.468.5951
mfruedenberger@meridiancapital.com

SHAYA KATZ
Associate
212.468.5991
shaya.katz@meridiancapital.com



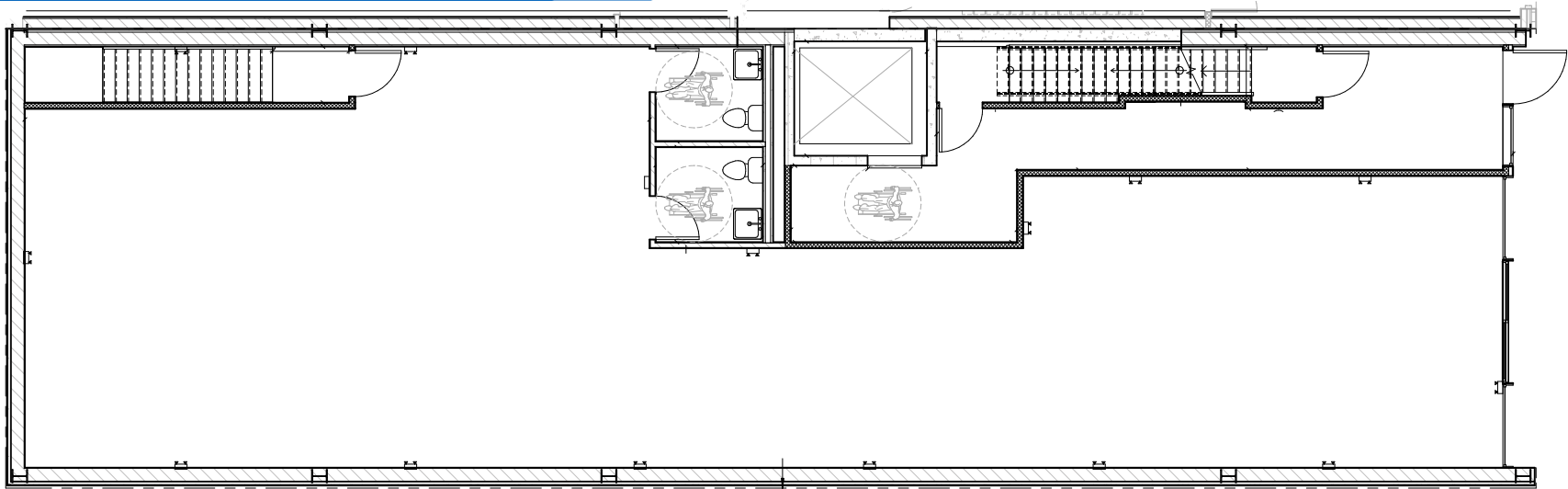
MERIDIAN
RETAIL LEASING

All information supplied is from sources deemed reliable and is furnished subject to errors, omissions, modifications, removal of the listing from sale or lease, and to any listing conditions, including the rates and manner of payment of commissions for particular offerings imposed by Meridian Capital Group. This information may include estimates and projections prepared by Meridian Capital Group with respect to future events, and these future events may or may not actually occur. Such estimates and projections reflect various assumptions concerning anticipated results. While Meridian Capital Group believes these assumptions are reasonable, there can be no assurance that any of these estimates and projections will be correct. Therefore, actual results may vary materially from these estimates and projections. Any square footage dimensions set forth are approximate.

499 EVERGREEN AVENUE

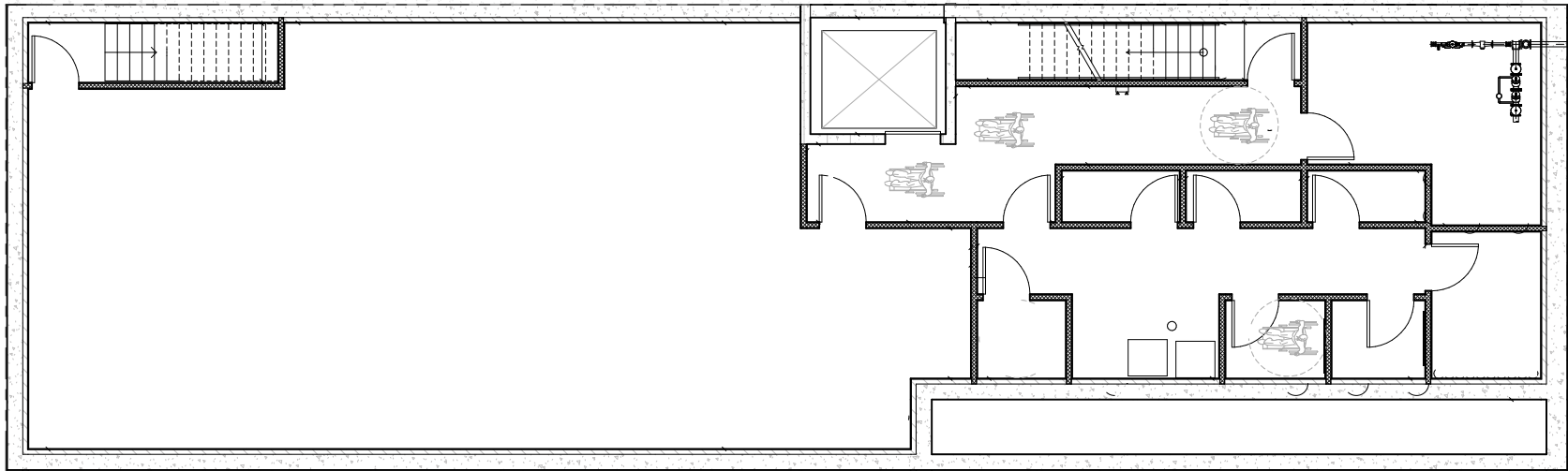
BUSHWICK, BROOKLYN | Corner of Evergreen and Putnam Avenues

COMMUNITY FACILITY FOR LEASE



ENTRANCE ON EVERGREEN AVENUE

GROUND FLOOR



LOWER LEVEL

FLOOR PLAN

NOAM AZIZ

Senior Director
212.468.5984
naziz@meridiancapital.com

MAX FREUDENBERGER

Senior Associate
212.468.5951
mfruedenberger@meridiancapital.com

SHAYA KATZ

Associate
212.468.5991
shaya.katz@meridiancapital.com



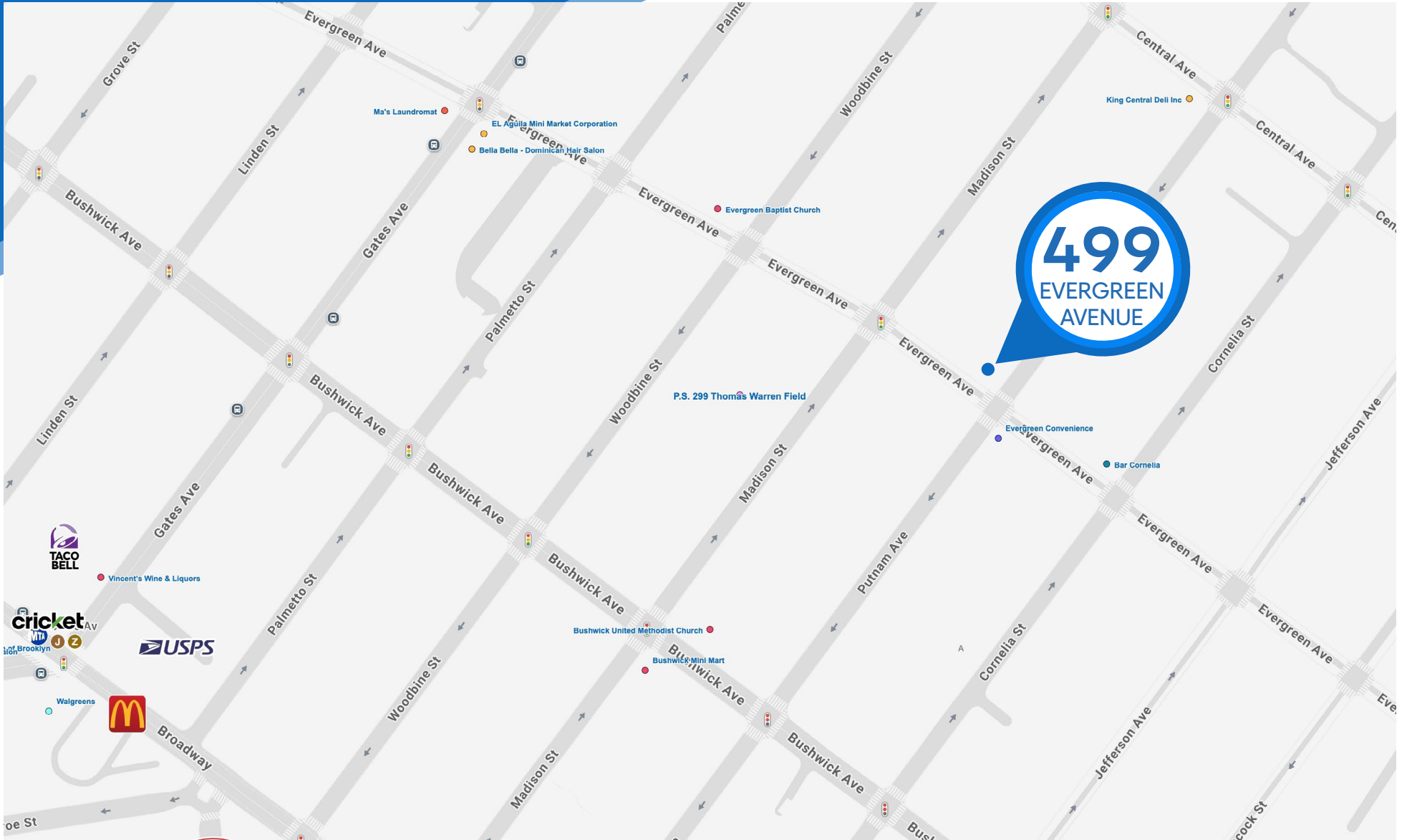
MERIDIAN
RETAIL LEASING

All information supplied is from sources deemed reliable and is furnished subject to errors, omissions, modifications, removal of the listing from sale or lease, and to any listing conditions, including the rates and manner of payment of commissions for particular offerings imposed by Meridian Capital Group. This information may include estimates and projections prepared by Meridian Capital Group with respect to future events, and these future events may or may not actually occur. Such estimates and projections reflect various assumptions concerning anticipated results. While Meridian Capital Group believes these assumptions are reasonable, there can be no assurance that any of these estimates and projections will be correct. Therefore, actual results may vary materially from these estimates and projections. Any square footage dimensions set forth are approximate.

499 EVERGREEN AVENUE

BUSHWICK, BROOKLYN | Corner of Evergreen and Putnam Avenues

COMMUNITY FACILITY FOR LEASE



NEIGHBORS

NOAM AZIZ

Senior Director
212.468.5984
naziz@meridiancapital.com

MAX FREUDENBERGER

Senior Associate
212.468.5951
mfruedenberger@meridiancapital.com

SHAYA KATZ

Associate
212.468.5991
shaya.katz@meridiancapital.com



MERIDIAN
RETAIL LEASING

All information supplied is from sources deemed reliable and is furnished subject to errors, omissions, modifications, removal of the listing from sale or lease, and to any listing conditions, including the rates and manner of payment of commissions for particular offerings imposed by Meridian Capital Group. This information may include estimates and projections prepared by Meridian Capital Group with respect to future events, and these future events may or may not actually occur. Such estimates and projections reflect various assumptions concerning anticipated results. While Meridian Capital Group believes these assumptions are reasonable, there can be no assurance that any of these estimates and projections will be correct. Therefore, actual results may vary materially from these estimates and projections. Any square footage dimensions set forth are approximate.