

# 231

**EAST 60<sup>TH</sup> STREET**  
UPPER EAST SIDE, NYC

Between Second & Third Avenues

RETAIL FOR LEASE

#### APPROXIMATE SIZE

1,200 SF + Full Basement  
Outdoor Rear Patio

#### ASKING RENT

\$11,800/Month

#### POSSESSION

Arranged

#### TERM

10-15 Years

#### FRONTAGE

20 FT

#### COMMENTS

- Retail at the base of a newly renovated townhouse
- White-box condition with glass frontage
- Contiguous lower level in place
- Private outdoor rear patio opportunity

#### NEIGHBORS

T Bar • Serendipity 3 • City Wine Gallery •  
The Jeffrey • CB2 • Lena's Italian Kitchen •  
Equinox • Crunch Fitness • Trader Joe's • Tracy  
Anderson • The Home Depot • Treadwell Park

#### TRANSPORTATION

4 5 6 N R W



PROPERTY INFORMATION

#### JAMES FAMULARO

President  
646.658.7373  
jfamularo@meridiancapital.com

#### JACOB MAYER

Director  
212.468.5926  
jmayer@meridiancapital.com



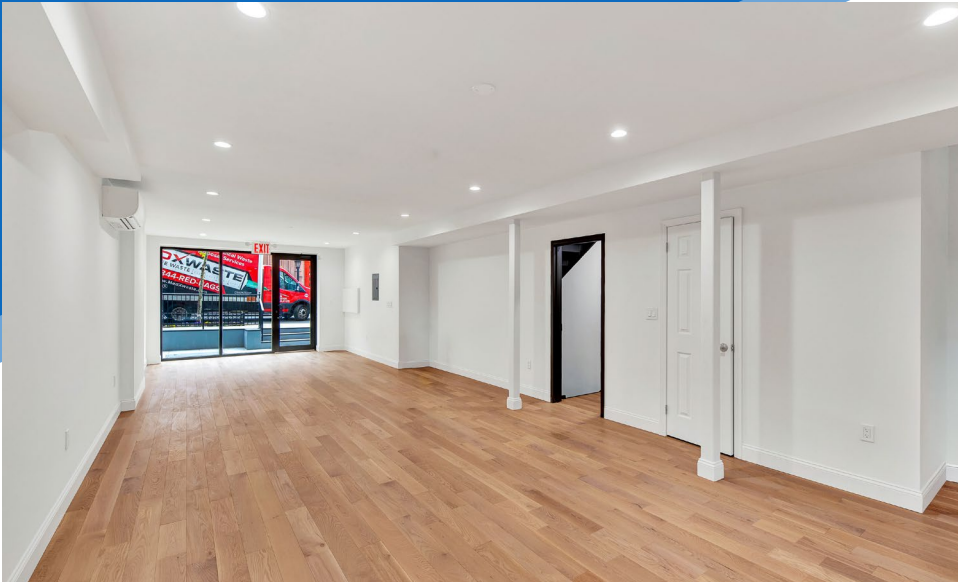
**MERIDIAN**  
RETAIL LEASING

All information supplied is from sources deemed reliable and is furnished subject to errors, omissions, modifications, removal of the listing from sale or lease, and to any listing conditions, including the rates and manner of payment of commissions for particular offerings imposed by Meridian Capital Group. This information may include estimates and projections prepared by Meridian Capital Group with respect to future events, and these future events may or may not actually occur. Such estimates and projections reflect various assumptions concerning anticipated results. While Meridian Capital Group believes these assumptions are reasonable, there can be no assurance that any of these estimates and projections will be correct. Therefore, actual results may vary materially from these estimates and projections. Any square footage dimensions set forth are approximate.

# 231 EAST 60<sup>TH</sup> STREET

UPPER EAST SIDE, NYC | Between Second and Third Avenues

RETAIL FOR LEASE



INTERIOR

**JAMES FAMULARO**

President  
646.658.7373  
jfamularo@meridiancapital.com

**JACOB MAYER**

Director  
212.468.5926  
jmayer@meridiancapital.com



**MERIDIAN**  
RETAIL LEASING

All information supplied is from sources deemed reliable and is furnished subject to errors, omissions, modifications, removal of the listing from sale or lease, and to any listing conditions, including the rates and manner of payment of commissions for particular offerings imposed by Meridian Capital Group. This information may include estimates and projections prepared by Meridian Capital Group with respect to future events, and these future events may or may not actually occur. Such estimates and projections reflect various assumptions concerning anticipated results. While Meridian Capital Group believes these assumptions are reasonable, there can be no assurance that any of these estimates and projections will be correct. Therefore, actual results may vary materially from these estimates and projections. Any square footage dimensions set forth are approximate.

