

# 151

## EAST 57<sup>TH</sup> STREET MIDTOWN EAST, NYC

Between Third & Lexington Avenues

RETAIL FOR LEASE

LEASED SEPARATELY OR TOGETHER

### APPROXIMATE SIZE

Second Floor: 1,250 SF  
Third Floor: 1,250 SF

### ASKING RENT

Upon Request

### POSSESSION

Immediate

### TERM

Negotiable

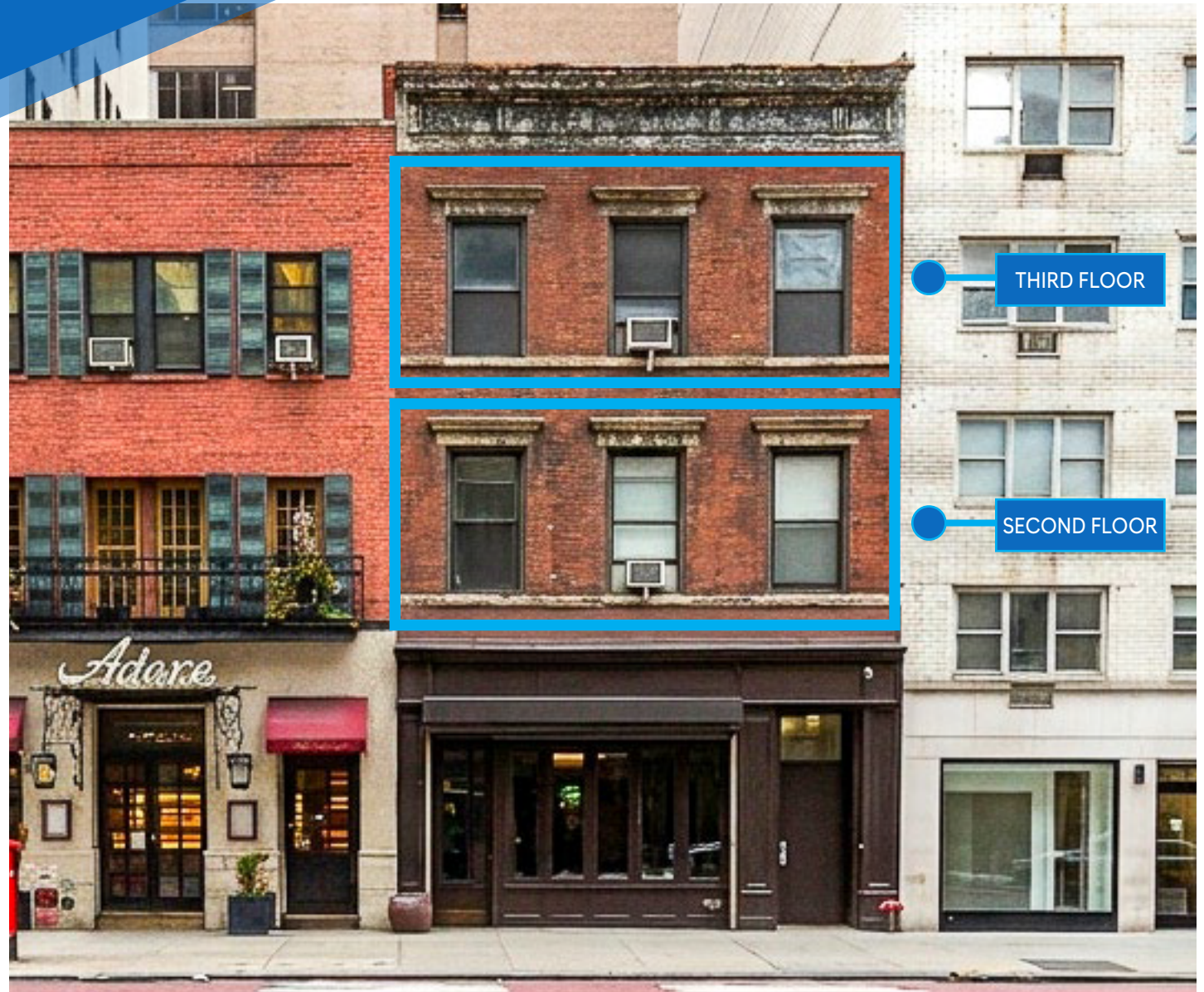
### COMMENTS

- Full floor opportunities
- Can be leased separately or together
- Open layout with natural light from 57th Street
- A rare convergence of affluent residents and massive daytime population
- Located at prime Midtown East and surrounded by luxury residential towers, global flagship retailers, hotels, and office buildings
- Strong daily foot traffic driven by retail, dining, and tourism corridors
- Steps from Bloomingdale's and Billionaire's Row, one of the world's most affluent residential corridor
- Flexible for custom buildout

### NEIGHBORS

Four Seasons Hotel • Ralph Lauren • Club A Steakhouse • T Bar • Bergdorf Goodman • Bloomingdale's • Orange Theory • Crab House NYC • Bloom's Tavern • Tao • Apple Store • Microsoft Store, Serafina • Joe & the Juice • Sephora • Unqilo • Daiso • Muji

### TRANSPORTATION



THIRD FLOOR

SECOND FLOOR

PROPERTY INFORMATION

### SAMUEL MUKAMAL

Associate  
212.468.5965  
smukamal@meridiancapital.com

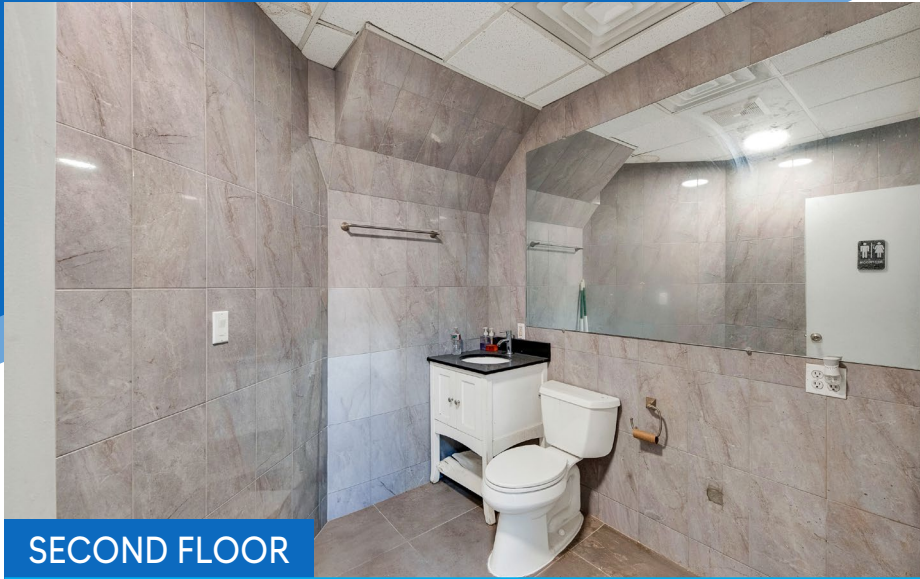
### AARON HAROUNIAN

Associate  
212.468.5957  
aharounian@meridiancapital.com



**MERIDIAN**  
RETAIL LEASING

All information supplied is from sources deemed reliable and is furnished subject to errors, omissions, modifications, removal of the listing from sale or lease, and to any listing conditions, including the rates and manner of payment of commissions for particular offerings imposed by Meridian Capital Group. This information may include estimates and projections prepared by Meridian Capital Group with respect to future events, and these future events may or may not actually occur. Such estimates and projections reflect various assumptions concerning anticipated results. While Meridian Capital Group believes these assumptions are reasonable, there can be no assurance that any of these estimates and projections will be correct. Therefore, actual results may vary materially from these estimates and projections. Any square footage dimensions set forth are approximate.



INTERIOR

**SAMUEL MUKAMAL**  
Associate  
212.468.5965  
smukamal@meridiancapital.com

**AARON HAROUNIAN**  
Associate  
212.468.5957  
aharounian@meridiancapital.com



**MERIDIAN**  
RETAIL LEASING

# 151 EAST 57TH STREET

MIDTOWN EAST, NYC | Between Third and Lexington Avenues

## RETAIL FOR LEASE

LEASED SEPARATELY OR TOGETHER



NEIGHBORS

### SAMUEL MUKAMAL

Associate  
212.468.5965  
smukamal@meridiancapital.com

### AARON HAROUNIAN

Associate  
212.468.5957  
aharounian@meridiancapital.com



**MERIDIAN**  
RETAIL LEASING

All information supplied is from sources deemed reliable and is furnished subject to errors, omissions, modifications, removal of the listing from sale or lease, and to any listing conditions, including the rates and manner of payment of commissions for particular offerings imposed by Meridian Capital Group. This information may include estimates and projections prepared by Meridian Capital Group with respect to future events, and these future events may or may not actually occur. Such estimates and projections reflect various assumptions concerning anticipated results. While Meridian Capital Group believes these assumptions are reasonable, there can be no assurance that any of these estimates and projections will be correct. Therefore, actual results may vary materially from these estimates and projections. Any square footage dimensions set forth are approximate.