

128

WASHINGTON STREET
NORWALK, CONNECTICUT



 **MERIDIAN**
RETAIL LEASING

128

WASHINGTON STREET NORWALK, CONNECTICUT

Between North Main & North Water Streets

RESTAURANT FOR LEASE

APPROXIMATE SIZE

Ground Floor: 3,935 SF
Mezzanine: 1,433 SF
Basement: 1,500 SF

ASKING RENT

Upon Request

POSSESSION

Immediate

TERM

Negotiable

FRONTAGE

40 FT

COMMENTS

- Turn-key restaurant situated in the heart of Washington Street Historic District in Connecticut's most vibrant corridor filled with restaurants and shops
- Over 1,000+ new residential units under development within a 3-block walking distance providing a rapidly expanding customer base
- Equipped with 100+ seats with a mezzanine overlooking the restaurant
- Dedicated storage basement complete with walk-in refrigeration

NEIGHBORS

Lazy Sister • Mecha Noodle Bar • Eco Evolution • Donovan's • Oishi • Match • Himalaya • MaaMa by Cheese and Bread • Tablao • Brass & Bone

TRANSPORTATION

 Metro-North Railroad

JAMES FAMULARO

President
646.658.7373
jfamularo@meridiancapital.com

JOHN ROESCH

Senior Director
212.468.5971
jroesch@meridiancapital.com

ELLIOT WYGODA

Director
212.468.5968
ewygoda@meridiancapital.com

ASHLYN LORENTZ

Associate
212.468.5954
alorentz@meridiancapital.com



PROPERTY INFORMATION

All information supplied is from sources deemed reliable and is furnished subject to errors, omissions, modifications, removal of the listing from sale or lease, and to any listing conditions, including the rates and manner of payment of commissions for particular offerings imposed by Meridian Capital Group. This information may include estimates and projections prepared by Meridian Capital Group with respect to future events, and these future events may or may not actually occur. Such estimates and projections reflect various assumptions concerning anticipated results. While Meridian Capital Group believes these assumptions are reasonable, there can be no assurance that any of these estimates and projections will be correct. Therefore, actual results may vary materially from these estimates and projections. Any square footage dimensions set forth are approximate.

128 WASHINGTON STREET
NORWALK, CONNECTICUT | Between North Main and Water Streets

RESTAURANT FOR LEASE



INTERIOR

JAMES FAMULARO

President
646.658.7373
jfamularo@meridiancapital.com

JOHN ROESCH

Senior Director
212.468.5971
jroesch@meridiancapital.com

ELLIOT WYODA

Director
212.468.5968
ewyoda@meridiancapital.com

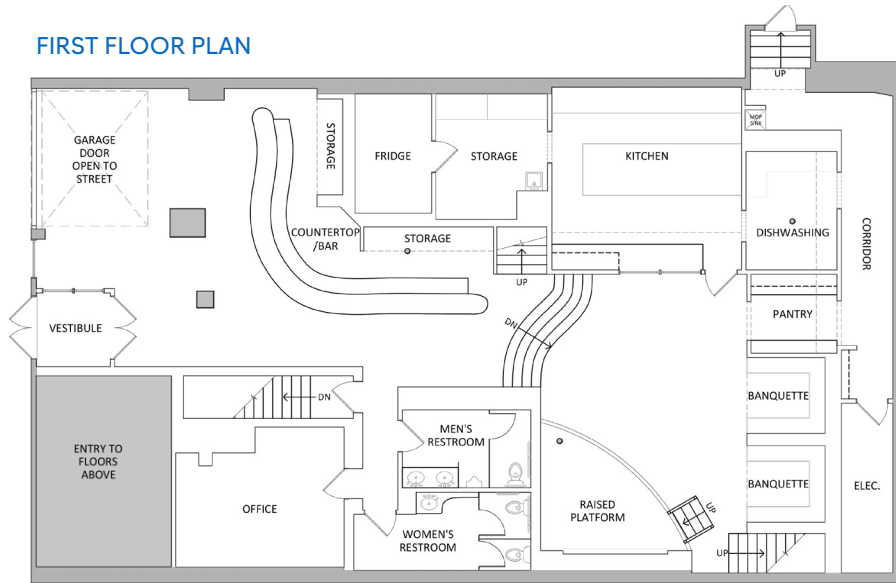
ASHLYN LORENTZ

Associate
212.468.5954
alorentz@meridiancapital.com

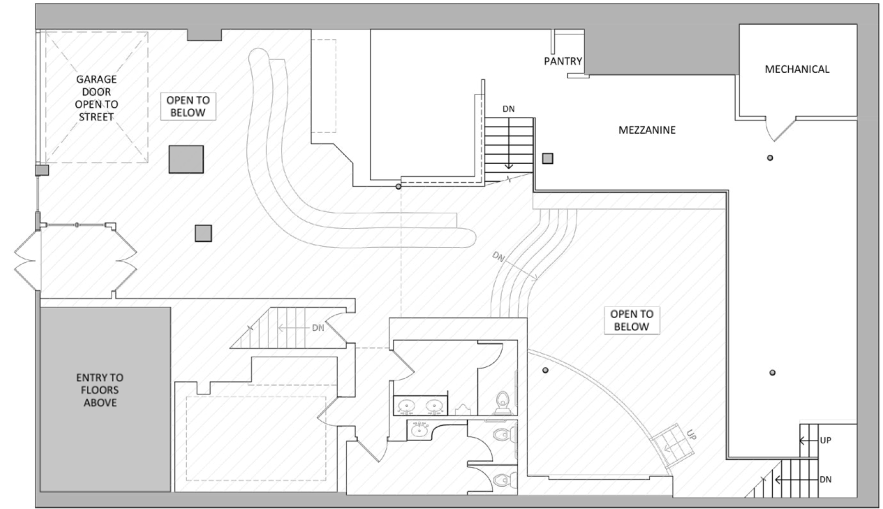


All information supplied is from sources deemed reliable and is furnished subject to errors, omissions, modifications, removal of the listing from sale or lease, and to any listing conditions, including the rates and manner of payment of commissions for particular offerings imposed by Meridian Capital Group. This information may include estimates and projections prepared by Meridian Capital Group with respect to future events, and these future events may or may not actually occur. Such estimates and projections reflect various assumptions concerning anticipated results. While Meridian Capital Group believes these assumptions are reasonable, there can be no assurance that any of these estimates and projections will be correct. Therefore, actual results may vary materially from these estimates and projections. Any square footage dimensions set forth are approximate.

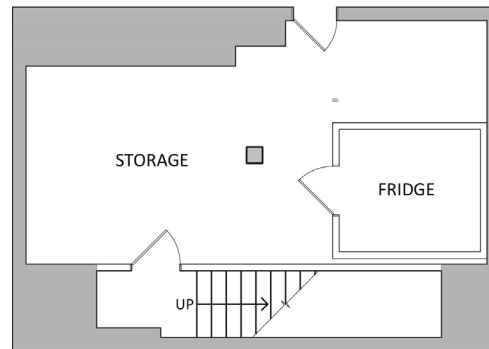
FIRST FLOOR PLAN



MEZZANINE FLOOR PLAN



BASEMENT FLOOR PLAN



JAMES FAMULARO

President
 646.658.7373
 jfamularo@meridiancapital.com

JOHN ROESCH

Senior Director
 212.468.5971
 jroesch@meridiancapital.com

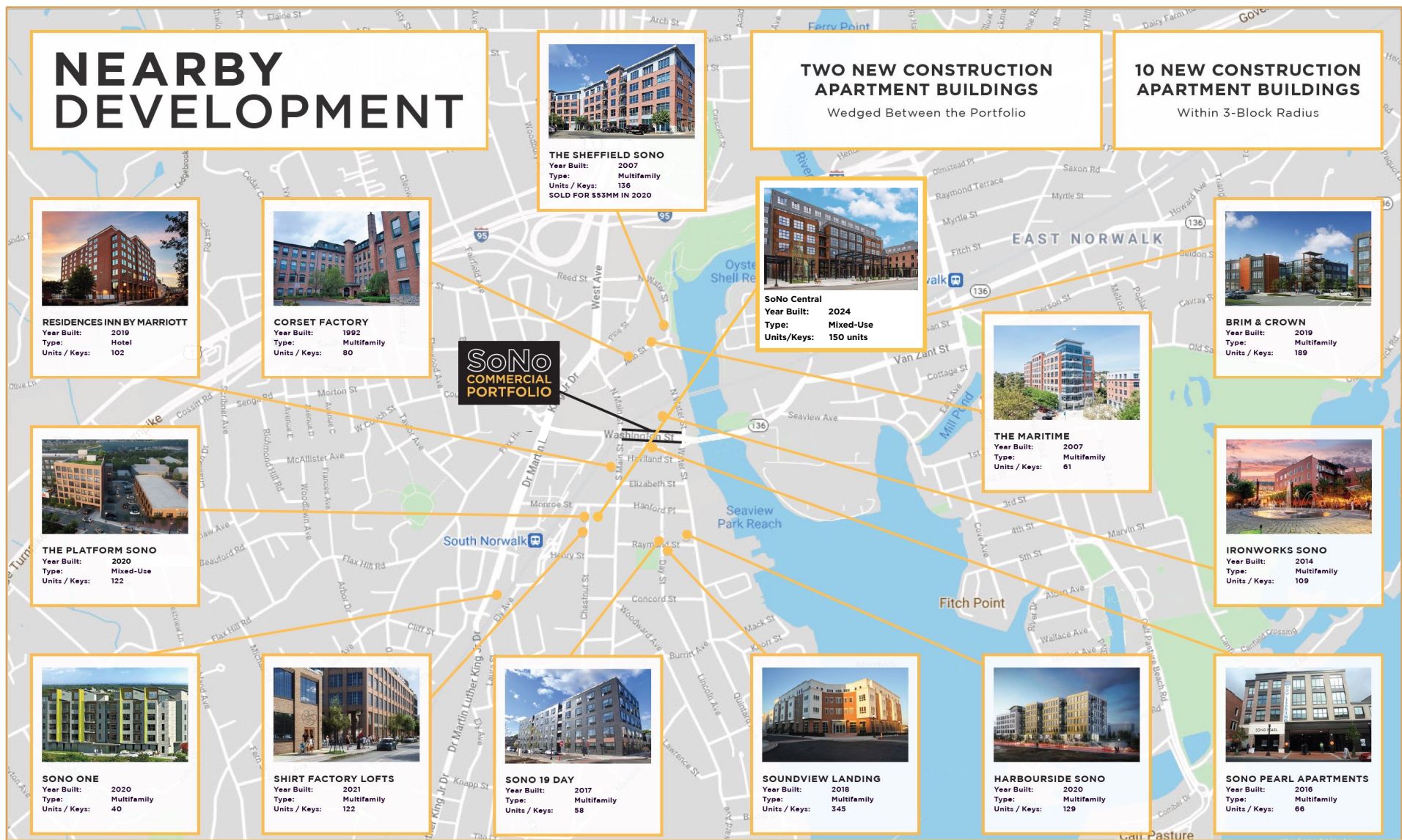
ELLIOT WYGODA

Director
 212.468.5968
 ewygoda@meridiancapital.com

ASHLYN LORENTZ

Associate
 212.468.5954
 alorentz@meridiancapital.com





JAMES FAMULARO
 President
 646.658.7373
 jfamularo@meridiancapital.com

JOHN ROESCH
 Senior Director
 212.468.5971
 jroesch@meridiancapital.com

ELLIOT WYGODA
 Director
 212.468.5968
 ewygoda@meridiancapital.com

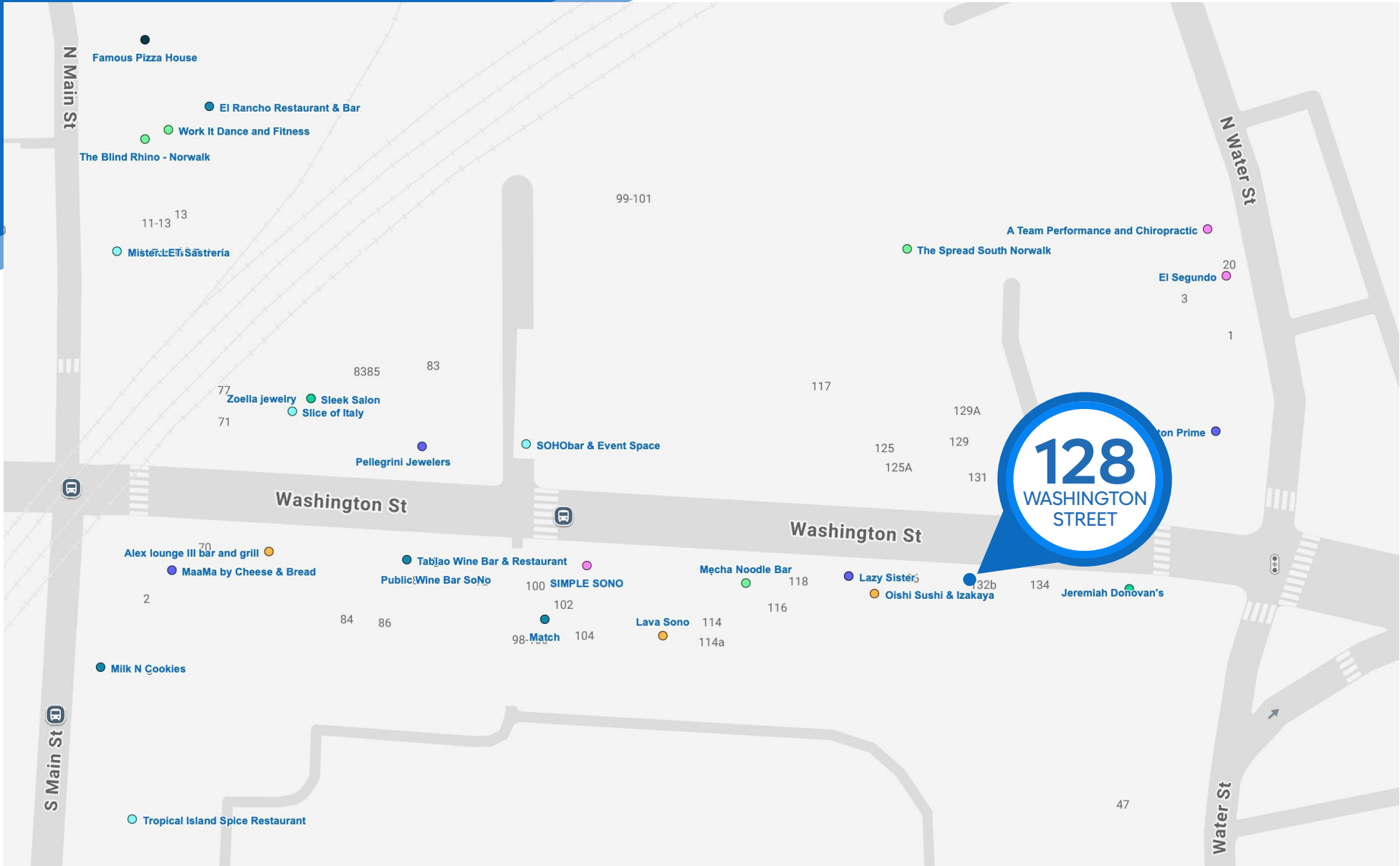
ASHLYN LORENTZ
 Associate
 212.468.5954
 alorentz@meridiancapital.com



128 WASHINGTON STREET

NORWALK, CONNECTICUT | Between North Main and Water Streets

RESTAURANT FOR LEASE



NEIGHBORS

JAMES FAMULARO

President
646.658.7373
jfamularo@meridiancapital.com

JOHN ROESCH

Senior Director
212.468.5971
jroesch@meridiancapital.com

ELLIOT WYGODA

Director
212.468.5968
ewygoda@meridiancapital.com

ASHLYN LORENTZ

Associate
212.468.5954
alorentz@meridiancapital.com



All information supplied is from sources deemed reliable and is furnished subject to errors, omissions, modifications, removal of the listing from sale or lease, and to any listing conditions, including the rates and manner of payment of commissions for particular offerings imposed by Meridian Capital Group. This information may include estimates and projections prepared by Meridian Capital Group with respect to future events, and these future events may or may not actually occur. Such estimates and projections reflect various assumptions concerning anticipated results. While Meridian Capital Group believes these assumptions are reasonable, there can be no assurance that any of these estimates and projections will be correct. Therefore, actual results may vary materially from these estimates and projections. Any square footage dimensions set forth are approximate.