

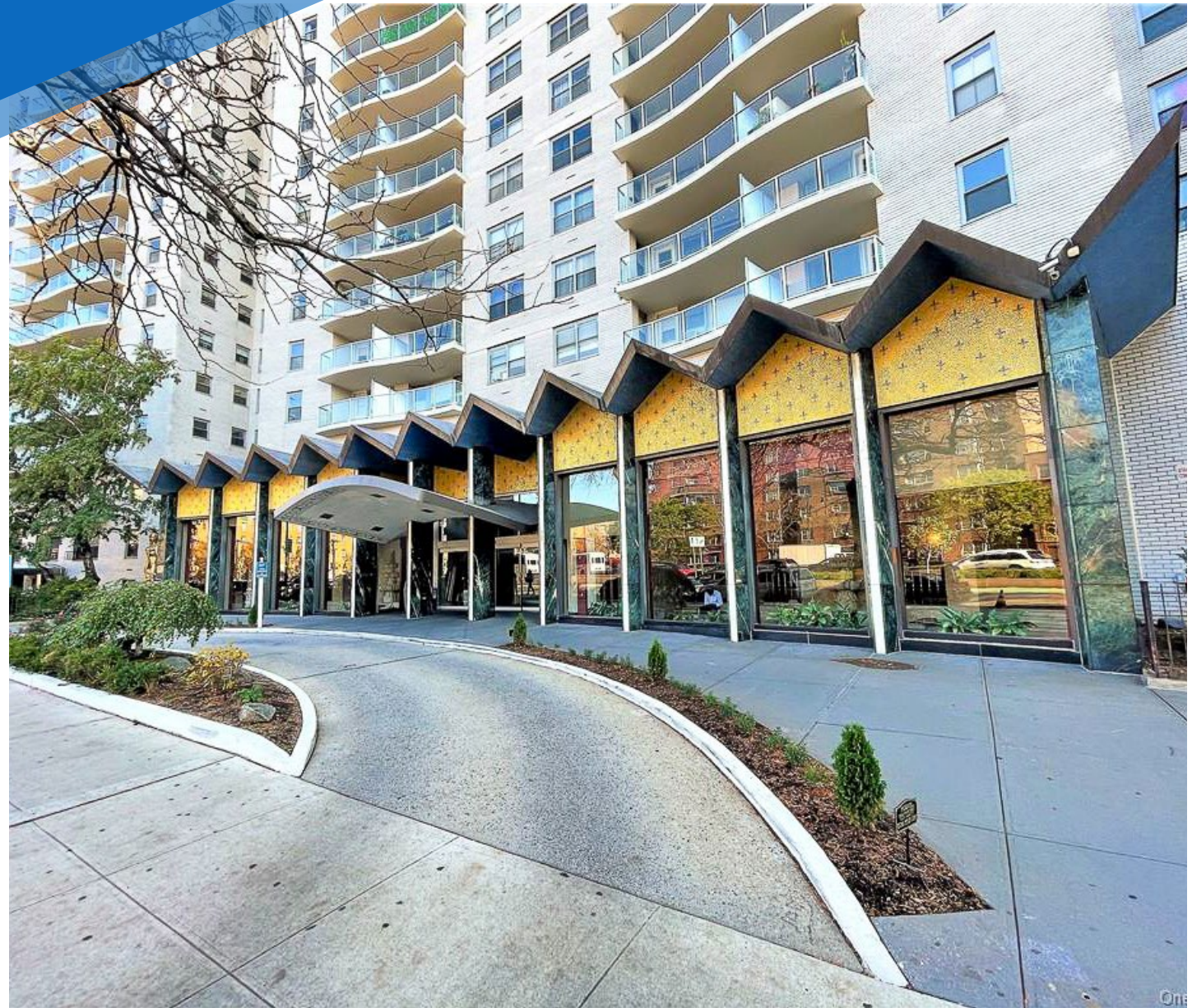
# 1020

## GRAND CONCOURSE

FLEETWOOD, BRONX

Between East 164<sup>th</sup> & 165<sup>th</sup> Streets

OFFICE FOR LEASE



PROPERTY INFORMATION

### APPROXIMATE SIZE

10,750 SF

### ASKING RENT

\$25,000/Month

### POSSESSION

Immediate

### TERM

Negotiable

### COMMENTS

- First floor consists of 4 suits
- Second floor consists of 11 suites with direct elevator access
- Suites range from 300-1,000 SF
- Offices across first and second floors with elevator access
- Bathrooms in place
- Close proximity to the 167<sup>th</sup> Street station

### NEIGHBORS

The Bronx Museum • Narciso Fruits & Vegetables  
• Concourse Rehabilitation & Nursing Center •  
Cacheo Food Market • La Solucion Laundromat

### TRANSPORTATION

4

### NOAM AZIZ

Senior Director  
212.468.5984  
naziz@meridiancapital.com

### MICHAEL ESCAVA

Associate  
212.468.5918  
mescava@meridiancapital.com

### DANIEL ZACAİM

Associate  
212.468.5910  
dzacaim@meridiancapital.com



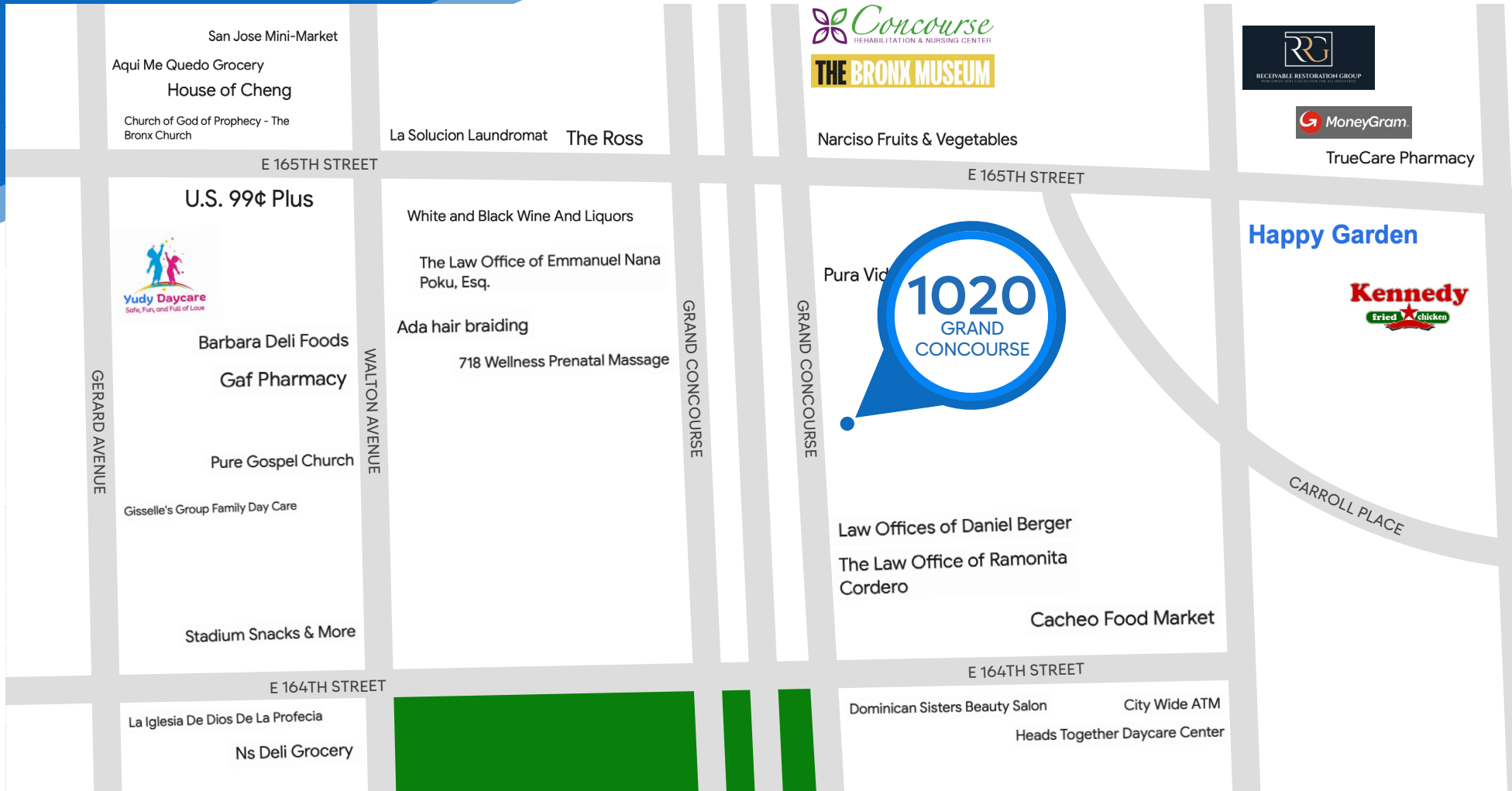
**MERIDIAN**  
RETAIL LEASING

All information supplied is from sources deemed reliable and is furnished subject to errors, omissions, modifications, removal of the listing from sale or lease, and to any listing conditions, including the rates and manner of payment of commissions for particular offerings imposed by Meridian Capital Group. This information may include estimates and projections prepared by Meridian Capital Group with respect to future events, and these future events may or may not actually occur. Such estimates and projections reflect various assumptions concerning anticipated results. While Meridian Capital Group believes these assumptions are reasonable, there can be no assurance that any of these estimates and projections will be correct. Therefore, actual results may vary materially from these estimates and projections. Any square footage dimensions set forth are approximate.

# 1020 GRAND CONCOURSE

FLEETWOOD, BRONX | Between East 164<sup>th</sup> and 165<sup>th</sup> Streets

OFFICE FOR LEASE



NEIGHBORS

**NOAM AZIZ**  
Senior Director  
212.468.5984  
naziz@meridiancapital.com

**MICHAEL ESCAVA**  
Associate  
212.468.5918  
mescava@meridiancapital.com

**DANIEL ZACAİM**  
Associate  
212.468.5910  
dzacaim@meridiancapital.com



**MERIDIAN**  
RETAIL LEASING

All information supplied is from sources deemed reliable and is furnished subject to errors, omissions, modifications, removal of the listing from sale or lease, and to any listing conditions, including the rates and manner of payment of commissions for particular offerings imposed by Meridian Capital Group. This information may include estimates and projections prepared by Meridian Capital Group with respect to future events, and these future events may or may not actually occur. Such estimates and projections reflect various assumptions concerning anticipated results. While Meridian Capital Group believes these assumptions are reasonable, there can be no assurance that any of these estimates and projections will be correct. Therefore, actual results may vary materially from these estimates and projections. Any square footage dimensions set forth are approximate.