

# 665

## LENOX AVENUE

HARLEM, NYC

Between West 142<sup>nd</sup> & 143<sup>rd</sup> Streets

RETAIL FOR LEASE

### APPROXIMATE SIZE

825 SF

### ASKING RENT

~~\$4,000/Month~~ Reduced  
\$3,500/Month

### POSSESSION

Immediate

### TERM

Negotiable

### FRONTAGE

15 FT

### COMMENTS

- Second generation former hair salon
- Bathroom in place
- Dense residential neighborhood
- Steps from the 145<sup>th</sup> Street subway

### NEIGHBORS

Harlem Children's Zone • Boost Mobile • Dunkin'  
• KFC • Taty Food for the Soul • Harlem Crust  
Pizza • Agave • Charles Pan Fried Chicken

### TRANSPORTATION

2 3



PROPERTY INFORMATION

### NOAM AZIZ

Senior Director  
212.468.5984  
naziz@meridiancapital.com

### DANIEL RACHLINE

Senior Associate  
212.468.5956  
drachline@meridiancapital.com



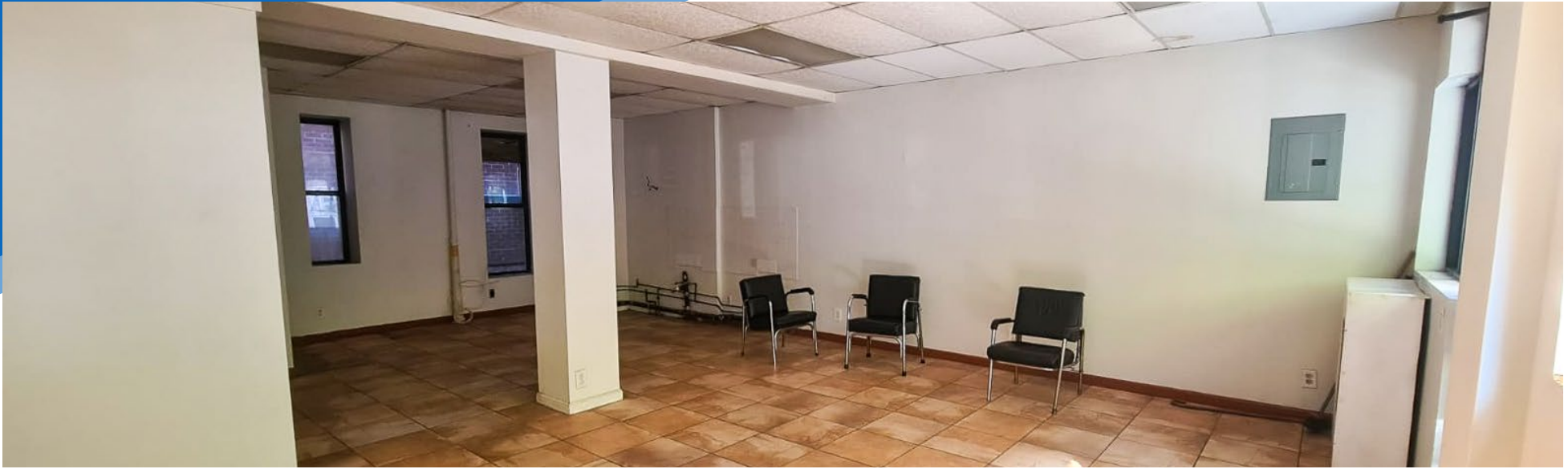
**MERIDIAN**  
RETAIL LEASING

All information supplied is from sources deemed reliable and is furnished subject to errors, omissions, modifications, removal of the listing from sale or lease, and to any listing conditions, including the rates and manner of payment of commissions for particular offerings imposed by Meridian Capital Group. This information may include estimates and projections prepared by Meridian Capital Group with respect to future events, and these future events may or may not actually occur. Such estimates and projections reflect various assumptions concerning anticipated results. While Meridian Capital Group believes these assumptions are reasonable, there can be no assurance that any of these estimates and projections will be correct. Therefore, actual results may vary materially from these estimates and projections. Any square footage dimensions set forth are approximate.

# 665 LENOX AVENUE

HARLEM, NYC | Between West 142<sup>nd</sup> and 143<sup>rd</sup> Streets

RETAIL FOR LEASE



INTERIOR

**NOAM AZIZ**  
Senior Director  
212.468.5984  
naziz@meridiancapital.com

**DANIEL RACHLINE**  
Senior Associate  
212.468.5956  
drachline@meridiancapital.com



**MERIDIAN**  
RETAIL LEASING

All information supplied is from sources deemed reliable and is furnished subject to errors, omissions, modifications, removal of the listing from sale or lease, and to any listing conditions, including the rates and manner of payment of commissions for particular offerings imposed by Meridian Capital Group. This information may include estimates and projections prepared by Meridian Capital Group with respect to future events, and these future events may or may not actually occur. Such estimates and projections reflect various assumptions concerning anticipated results. While Meridian Capital Group believes these assumptions are reasonable, there can be no assurance that any of these estimates and projections will be correct. Therefore, actual results may vary materially from these estimates and projections. Any square footage dimensions set forth are approximate.

# 665 LENOX AVENUE

HARLEM, NYC | Between West 142<sup>nd</sup> and 143<sup>rd</sup> Streets

RETAIL FOR LEASE



NEIGHBORS

**NOAM AZIZ**  
Senior Director  
212.468.5984  
naziz@meridiancapital.com

**DANIEL RACHLINE**  
Senior Associate  
212.468.5956  
drachline@meridiancapital.com



**MERIDIAN**  
RETAIL LEASING

All information supplied is from sources deemed reliable and is furnished subject to errors, omissions, modifications, removal of the listing from sale or lease, and to any listing conditions, including the rates and manner of payment of commissions for particular offerings imposed by Meridian Capital Group. This information may include estimates and projections prepared by Meridian Capital Group with respect to future events, and these future events may or may not actually occur. Such estimates and projections reflect various assumptions concerning anticipated results. While Meridian Capital Group believes these assumptions are reasonable, there can be no assurance that any of these estimates and projections will be correct. Therefore, actual results may vary materially from these estimates and projections. Any square footage dimensions set forth are approximate.