

# 644

## EAST 14<sup>TH</sup> STREET EAST VILLAGE, NYC

Corner of East 14<sup>th</sup> Street & Avenue C

RETAIL FOR LEASE

### APPROXIMATE SIZE

Inline: 997 SF

### ASKING RENT

\$5,000/Month

### POSSESSION

Q4 2026

### TERM

10-15 Years

### FRONTAGE

70 FT Wraparound

### COMMENTS

- Corner retail space at the base of a brand-new 200,000 SF residential building
- Directly across from Stuy-Town
- Brand-new glass frontage
- Dense residential area on a 2-way street
- **Can be combined with the corner 1,205 SF space**

### NEIGHBORS

Holy Cow Burgers • Dunkin' • Solidcore • Carvel  
• Trader Joe's • Popeyes • Wingstop • Cauz for Pawz • Sushi Counter • Hidden Tiger • Corepower

### TRANSPORTATION

L



PROPERTY INFORMATION

### JAMES FAMULARO

President  
646.658.7373  
jfamularo@meridiancapital.com

### JACOB MAYER

Director  
212.468.5926  
jmayer@meridiancapital.com

### MICHAEL ESCAVA

Associate  
212.468.5918  
mescava@meridiancapital.com

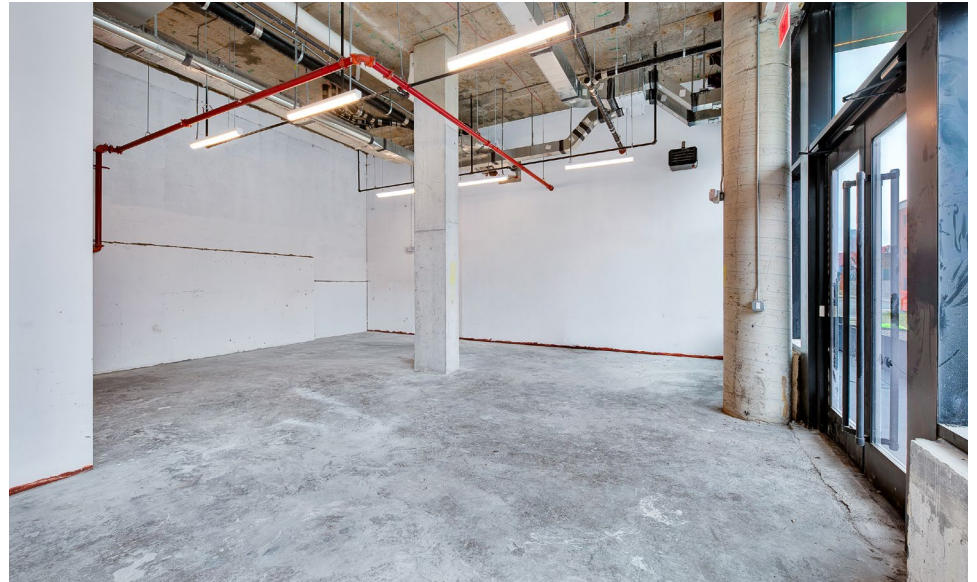
THE  
**EAST**  **MERIDIAN**  
RETAIL LEASING

All information supplied is from sources deemed reliable and is furnished subject to errors, omissions, modifications, removal of the listing from sale or lease, and to any listing conditions, including the rates and manner of payment of commissions for particular offerings imposed by Meridian Capital Group. This information may include estimates and projections prepared by Meridian Capital Group with respect to future events, and these future events may or may not actually occur. Such estimates and projections reflect various assumptions concerning anticipated results. While Meridian Capital Group believes these assumptions are reasonable, there can be no assurance that any of these estimates and projections will be correct. Therefore, actual results may vary materially from these estimates and projections. Any square footage dimensions set forth are approximate.

# 644 EAST 14<sup>TH</sup> STREET

EAST VILLAGE, NYC | Corner of East 14<sup>th</sup> Street and Avenue C

RETAIL FOR LEASE



INTERIOR

## JAMES FAMULARO

President  
646.658.7373  
jfamularo@meridiancapital.com

## JACOB MAYER

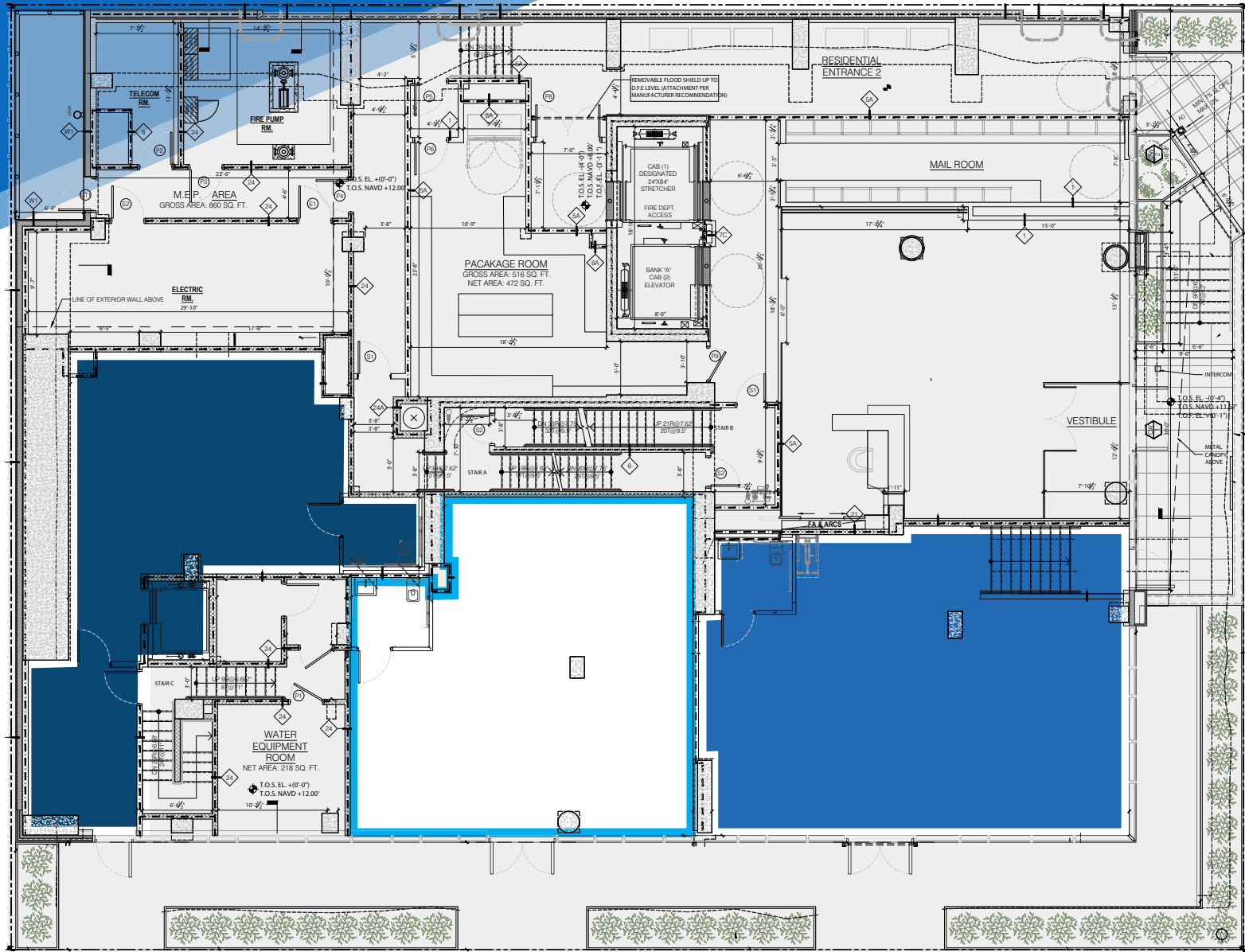
Director  
212.468.5926  
jmayer@meridiancapital.com

## MICHAEL ESCAVA

Associate  
212.468.5918  
mescava@meridiancapital.com

THE  
**EAST**  **MERIDIAN**  
RETAIL LEASING

All information supplied is from sources deemed reliable and is furnished subject to errors, omissions, modifications, removal of the listing from sale or lease, and to any listing conditions, including the rates and manner of payment of commissions for particular offerings imposed by Meridian Capital Group. This information may include estimates and projections prepared by Meridian Capital Group with respect to future events, and these future events may or may not actually occur. Such estimates and projections reflect various assumptions concerning anticipated results. While Meridian Capital Group believes these assumptions are reasonable, there can be no assurance that any of these estimates and projections will be correct. Therefore, actual results may vary materially from these estimates and projections. Any square footage dimensions set forth are approximate.



FLOOR PLAN

**JAMES FAMULARO**

President  
646.658.7373  
jfamularo@meridiancapital.com

**JACOB MAYER**

Director  
212.468.5926  
jmayer@meridiancapital.com

**MICHAEL ESCAVA**

Associate  
212.468.5918  
mescava@meridiancapital.com



All information supplied is from sources deemed reliable and is furnished subject to errors, omissions, modifications, removal of the listing from sale or lease, and to any listing conditions, including the rates and manner of payment of commissions for particular offerings imposed by Meridian Capital Group. This information may include estimates and projections prepared by Meridian Capital Group with respect to future events, and these future events may or may not actually occur. Such estimates and projections reflect various assumptions concerning anticipated results. While Meridian Capital Group believes these assumptions are reasonable, there can be no assurance that any of these estimates and projections will be correct. Therefore, actual results may vary materially from these estimates and projections. Any square footage dimensions set forth are approximate.

# 644 EAST 14<sup>TH</sup> STREET

EAST VILLAGE, NYC | Corner of East 14<sup>th</sup> Street and Avenue C

RETAIL FOR LEASE



NEIGHBORS

## JAMES FAMULARO

President  
646.658.7373  
jfamularo@meridiancapital.com

## JACOB MAYER

Director  
212.468.5926  
jmayer@meridiancapital.com

## MICHAEL ESCAVA

Associate  
212.468.5918  
mescava@meridiancapital.com



All information supplied is from sources deemed reliable and is furnished subject to errors, omissions, modifications, removal of the listing from sale or lease, and to any listing conditions, including the rates and manner of payment of commissions for particular offerings imposed by Meridian Capital Group. This information may include estimates and projections prepared by Meridian Capital Group with respect to future events, and these future events may or may not actually occur. Such estimates and projections reflect various assumptions concerning anticipated results. While Meridian Capital Group believes these assumptions are reasonable, there can be no assurance that any of these estimates and projections will be correct. Therefore, actual results may vary materially from these estimates and projections. Any square footage dimensions set forth are approximate.