

644

EAST 14TH STREET EAST VILLAGE, NYC

Corner of East 14th Street & Avenue C

RETAIL FOR LEASE

APPROXIMATE SIZE

Corner: 1,205 SF

ASKING RENT

\$7,500/Month

POSSESSION

Q4 2026

TERM

10-15 Years

FRONTAGE

70 FT Wraparound

COMMENTS

- Corner retail space at the base of a brand-new 200,000 SF residential building
- 2 means of egress on both Avenue C and East 14th Street directly across from Stuy-Town
- Brand-new glass frontage
- Dense residential area on a 2-way street
- **Can be combined with the corner 997 SF space**

NEIGHBORS

Holy Cow Burgers • Dunkin' • Solidcore • Carvel
• Trader Joe's • Popeyes • Wingstop • Cauz for Pawz • Sushi Counter • Hidden Tiger • Corepower

TRANSPORTATION

L



PROPERTY INFORMATION

JAMES FAMULARO

President
646.658.7373
jfamularo@meridiancapital.com

JACOB MAYER

Director
212.468.5926
jmayer@meridiancapital.com

MICHAEL ESCAVA

Associate
212.468.5918
mescava@meridiancapital.com

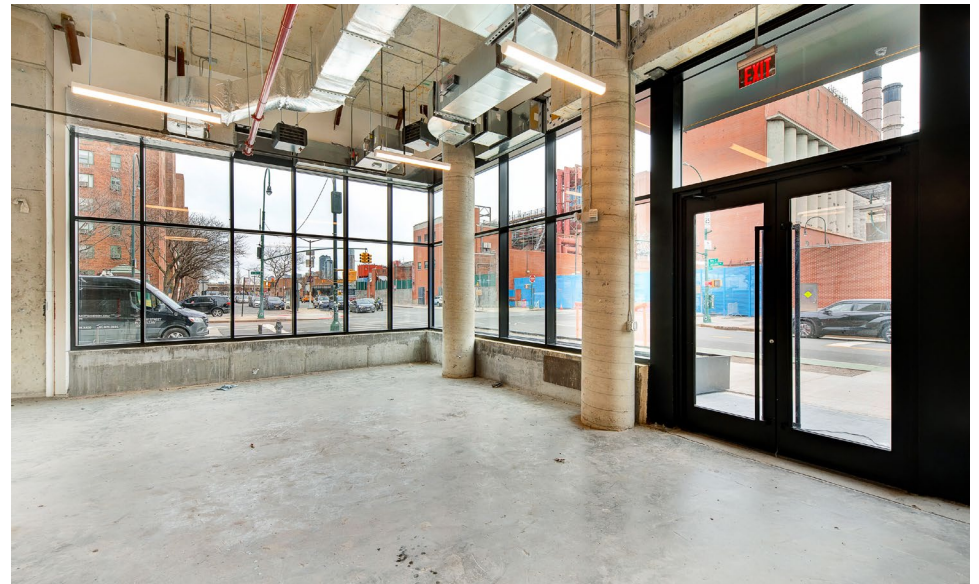
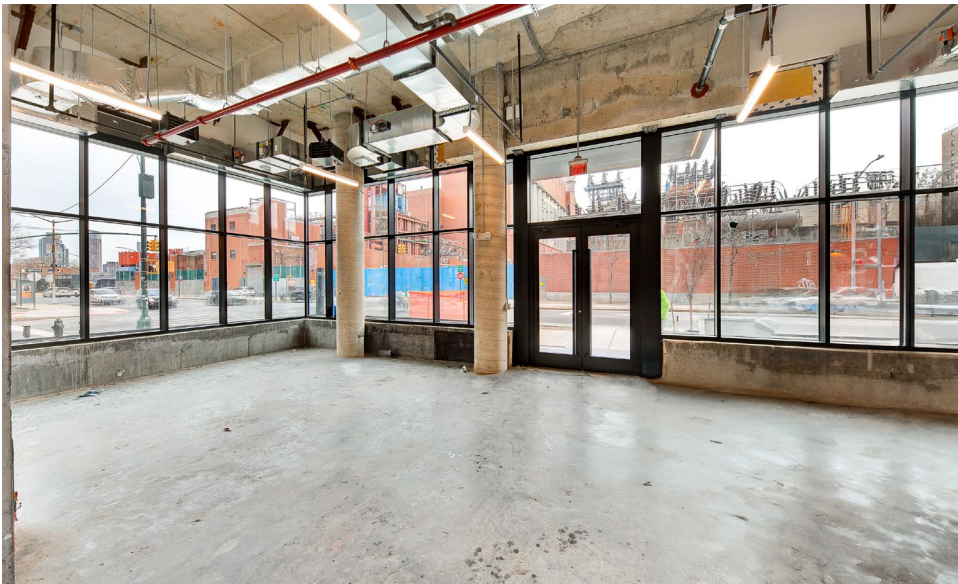
THE
EAST  **MERIDIAN**
RETAIL LEASING

All information supplied is from sources deemed reliable and is furnished subject to errors, omissions, modifications, removal of the listing from sale or lease, and to any listing conditions, including the rates and manner of payment of commissions for particular offerings imposed by Meridian Capital Group. This information may include estimates and projections prepared by Meridian Capital Group with respect to future events, and these future events may or may not actually occur. Such estimates and projections reflect various assumptions concerning anticipated results. While Meridian Capital Group believes these assumptions are reasonable, there can be no assurance that any of these estimates and projections will be correct. Therefore, actual results may vary materially from these estimates and projections. Any square footage dimensions set forth are approximate.

644 EAST 14TH STREET

EAST VILLAGE, NYC | Corner of East 14th Street and Avenue C

RETAIL FOR LEASE



INTERIOR

JAMES FAMULARO

President
646.658.7373
jfamularo@meridiancapital.com

JACOB MAYER

Director
212.468.5926
jmayer@meridiancapital.com

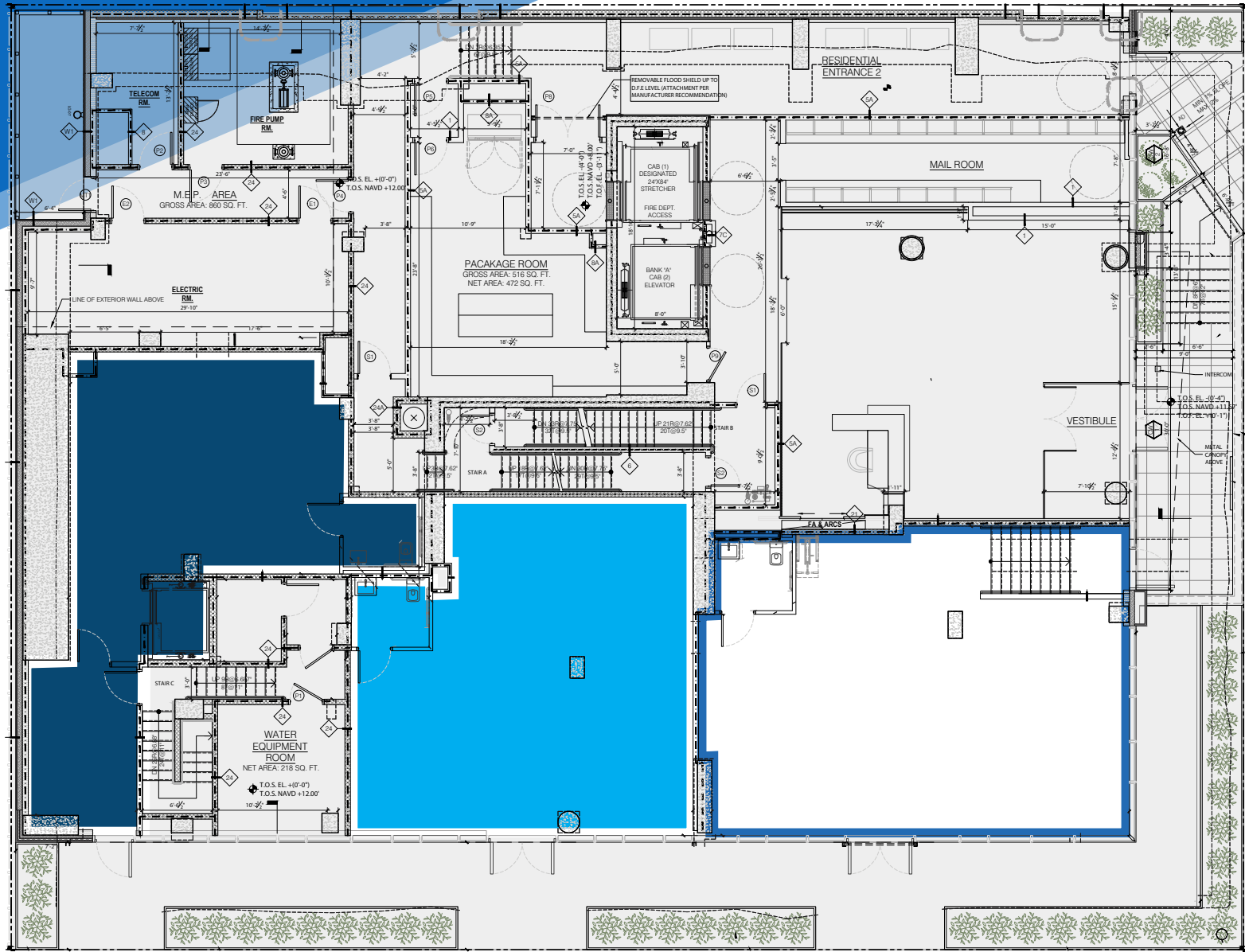
MICHAEL ESCAVA

Associate
212.468.5918
mescava@meridiancapital.com

THE EAST  MERIDIAN
RETAIL LEASING

All information supplied is from sources deemed reliable and is furnished subject to errors, omissions, modifications, removal of the listing from sale or lease, and to any listing conditions, including the rates and manner of payment of commissions for particular offerings imposed by Meridian Capital Group. This information may include estimates and projections prepared by Meridian Capital Group with respect to future events, and these future events may or may not actually occur. Such estimates and projections reflect various assumptions concerning anticipated results. While Meridian Capital Group believes these assumptions are reasonable, there can be no assurance that any of these estimates and projections will be correct. Therefore, actual results may vary materially from these estimates and projections. Any square footage dimensions set forth are approximate.

FLOOR PLAN



JAMES FAMULARO

President
646.658.7373
jfamularo@meridiancapital.com

JACOB MAYER

Director
212.468.5926
jmayer@meridiancapital.com

MICHAEL ESCAVA

Associate
212.468.5918
mescava@meridiancapital.com



644 EAST 14TH STREET

EAST VILLAGE, NYC | Corner of East 14th Street and Avenue C

RETAIL FOR LEASE



NEIGHBORS

JAMES FAMULARO

President
646.658.7373
jfamularo@meridiancapital.com

JACOB MAYER

Director
212.468.5926
jmayer@meridiancapital.com

MICHAEL ESCAVA

Associate
212.468.5918
mescava@meridiancapital.com



All information supplied is from sources deemed reliable and is furnished subject to errors, omissions, modifications, removal of the listing from sale or lease, and to any listing conditions, including the rates and manner of payment of commissions for particular offerings imposed by Meridian Capital Group. This information may include estimates and projections prepared by Meridian Capital Group with respect to future events, and these future events may or may not actually occur. Such estimates and projections reflect various assumptions concerning anticipated results. While Meridian Capital Group believes these assumptions are reasonable, there can be no assurance that any of these estimates and projections will be correct. Therefore, actual results may vary materially from these estimates and projections. Any square footage dimensions set forth are approximate.