

# 19

## BLEECKER STREET NOHO, NYC

Between Bowery & Lafayette Street

RETAIL FOR LEASE

### APPROXIMATE SIZE

1,000 SF

### ASKING RENT

\$18,000/Month

### POSSESSION

Arranged

### TERM

10-15 Years

### FRONTAGE

15 FT

### COMMENTS

- Rare opportunity on Bleecker Street
- Clean white-box space
- Large glass frontage
- Surrounded by high-end co-tenancy

### NEIGHBORS

C as in Charlie • Von • Codex • Fish Cheeks • 310 Bowery • Raf's • Sláinte Bar and Lounge • Jac's on Bond • Kissaki Sushi • Rosie's • Sweet Linda • Tom and Jerry's • Equinox • Vic's • Elvis Wine Bar

### TRANSPORTATION



### JAMES FAMULARO

President  
646.658.7373  
jfamularo@meridiancapital.com

### JACOB MAYER

Director  
212.468.5926  
jmayer@meridiancapital.com



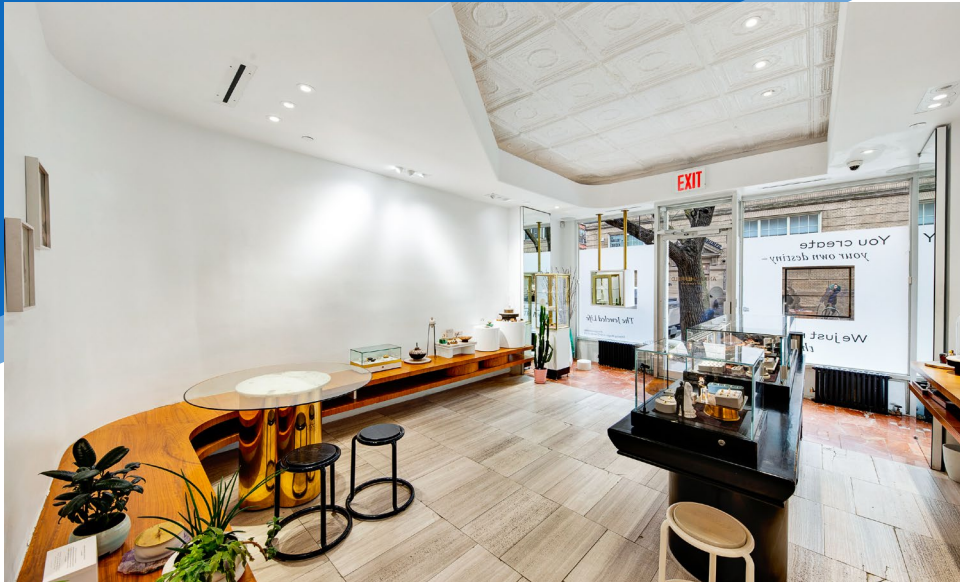
**MERIDIAN**  
RETAIL LEASING

All information supplied is from sources deemed reliable and is furnished subject to errors, omissions, modifications, removal of the listing from sale or lease, and to any listing conditions, including the rates and manner of payment of commissions for particular offerings imposed by Meridian Capital Group. This information may include estimates and projections prepared by Meridian Capital Group with respect to future events, and these future events may or may not actually occur. Such estimates and projections reflect various assumptions concerning anticipated results. While Meridian Capital Group believes these assumptions are reasonable, there can be no assurance that any of these estimates and projections will be correct. Therefore, actual results may vary materially from these estimates and projections. Any square footage dimensions set forth are approximate.

# 19 BLEECKER STREET

NOHO, NYC | Between Bowery and Lafayette Street

RETAIL FOR LEASE



INTERIOR

**JAMES FAMULARO**

President  
646.658.7373  
jfamularo@meridiancapital.com

**JACOB MAYER**

Director  
212.468.5926  
jmayer@meridiancapital.com



**MERIDIAN**  
RETAIL LEASING

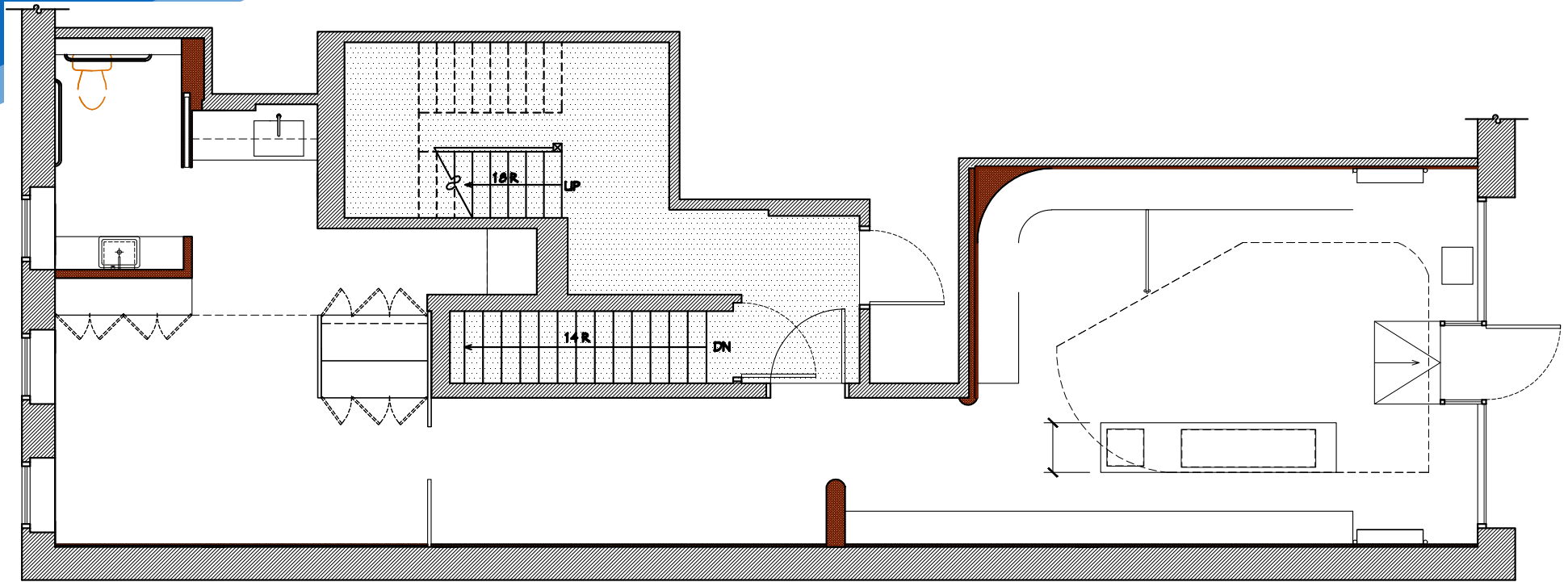
All information supplied is from sources deemed reliable and is furnished subject to errors, omissions, modifications, removal of the listing from sale or lease, and to any listing conditions, including the rates and manner of payment of commissions for particular offerings imposed by Meridian Capital Group. This information may include estimates and projections prepared by Meridian Capital Group with respect to future events, and these future events may or may not actually occur. Such estimates and projections reflect various assumptions concerning anticipated results. While Meridian Capital Group believes these assumptions are reasonable, there can be no assurance that any of these estimates and projections will be correct. Therefore, actual results may vary materially from these estimates and projections. Any square footage dimensions set forth are approximate.

# 19 BLEECKER STREET

NOHO, NYC | Between Bowery and Lafayette Street

RETAIL FOR LEASE

FLOOR PLAN



## JAMES FAMULARO

President  
646.658.7373  
jfamularo@meridiancapital.com

## JACOB MAYER

Director  
212.468.5926  
jmayer@meridiancapital.com



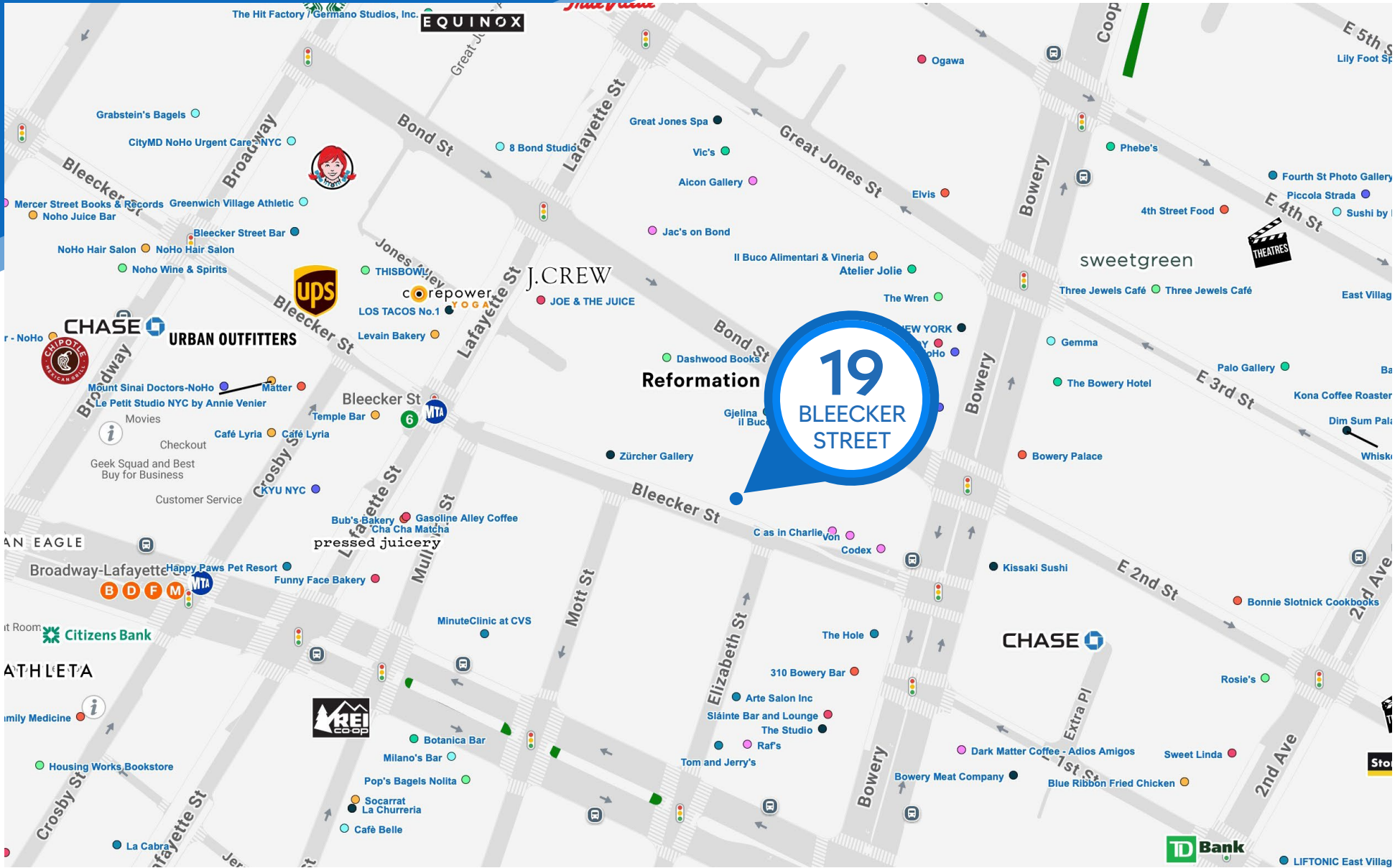
**MERIDIAN**  
RETAIL LEASING

All information supplied is from sources deemed reliable and is furnished subject to errors, omissions, modifications, removal of the listing from sale or lease, and to any listing conditions, including the rates and manner of payment of commissions for particular offerings imposed by Meridian Capital Group. This information may include estimates and projections prepared by Meridian Capital Group with respect to future events, and these future events may or may not actually occur. Such estimates and projections reflect various assumptions concerning anticipated results. While Meridian Capital Group believes these assumptions are reasonable, there can be no assurance that any of these estimates and projections will be correct. Therefore, actual results may vary materially from these estimates and projections. Any square footage dimensions set forth are approximate.

# 19 BLEECKER STREET

NOHO, NYC | Between Bowery and Lafayette Street

RETAIL FOR LEASE



NEIGHBORS

JAMES FAMULARO

President  
646.658.7373  
jfamularo@meridiancapital.com

JACOB MAYER

Director  
212.468.5926  
jmayer@meridiancapital.com



**MERIDIAN**  
RETAIL LEASING

All information supplied is from sources deemed reliable and is furnished subject to errors, omissions, modifications, removal of the listing from sale or lease, and to any listing conditions, including the rates and manner of payment of commissions for particular offerings imposed by Meridian Capital Group. This information may include estimates and projections prepared by Meridian Capital Group with respect to future events, and these future events may or may not actually occur. Such estimates and projections reflect various assumptions concerning anticipated results. While Meridian Capital Group believes these assumptions are reasonable, there can be no assurance that any of these estimates and projections will be correct. Therefore, actual results may vary materially from these estimates and projections. Any square footage dimensions set forth are approximate.