

166-12

JAMAICA AVENUE JAMAICA, QUEENS

Between Merrick Boulevard & 168th Street

RETAIL/RESTAURANT FOR LEASE

APPROXIMATE SIZE

Left Store: 1,800 SF + Basement
Right Store: 1,800 SF + Basement

ASKING RENT

Left Store: \$12,500/Month
Right Store: \$12,500/Month

TERM

Negotiable

FRONTAGE

Left: 16 FT
Right: 22 FT

POSSESSION

Immediate

COMMENTS

- Located along the busy Jamaica Avenue, one of Queens' most established retail corridors
- Heavy pedestrian traffic with a dense population surrounding
- Gas service available with meter located in the basement; venting possible
- New storefront façade to be installed
- Perfect for retail, food & beverage and other neighborhood-friendly service

NEIGHBORS

European Wax Center • Aldi • Taco Bell • The Home Depot • Rainbow • Carter's • Foot Locker • Five Below • Dollar General • Planet Fitness

TRANSPORTATION



NOAM AZIZ

Senior Director
212.468.5984
naziz@meridiancapital.com

MAX FREUDENBERGER

Senior Associate
212.468.5951
mfreudenberger@meridiancapital.com

WILL SINE

Associate
212.468.5945
wsine@meridiancapital.com



CONCEPTUAL RENDERING

PROPERTY INFORMATION



MERIDIAN
RETAIL LEASING

166-12 JAMAICA AVENUE

JAMAICA, QUEENS | Between Merrick Boulevard and 168th Street

RETAIL/RESTAURANT FOR LEASE



INTERIOR

NOAM AZIZ
Senior Director
212.468.5984
naziz@meridiancapital.com

MAX FREUDENBERGER
Senior Associate
212.468.5951
mfreudenberger@meridiancapital.com

WILL SINE
Associate
212.468.5945
wsine@meridiancapital.com



MERIDIAN
RETAIL LEASING

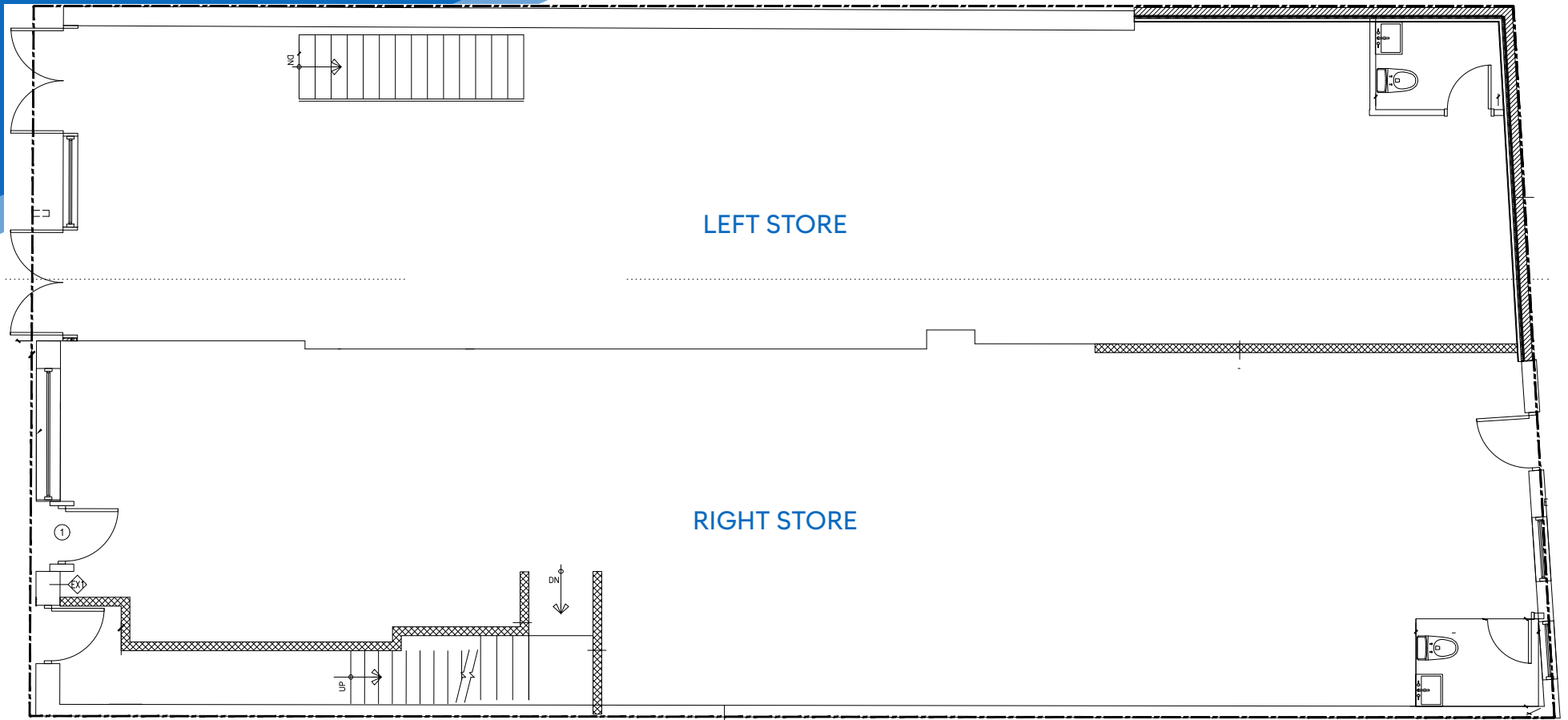
All information supplied is from sources deemed reliable and is furnished subject to errors, omissions, modifications, removal of the listing from sale or lease, and to any listing conditions, including the rates and manner of payment of commissions for particular offerings imposed by Meridian Capital Group. This information may include estimates and projections prepared by Meridian Capital Group with respect to future events, and these future events may or may not actually occur. Such estimates and projections reflect various assumptions concerning anticipated results. While Meridian Capital Group believes these assumptions are reasonable, there can be no assurance that any of these estimates and projections will be correct. Therefore, actual results may vary materially from these estimates and projections. Any square footage dimensions set forth are approximate.

166-12 JAMAICA AVENUE

JAMAICA, QUEENS | Between Merrick Boulevard and 168th Street

RETAIL/RESTAURANT FOR LEASE

FLOOR PLAN



NOAM AZIZ

Senior Director
212.468.5984
naziz@meridiancapital.com

MAX FREUDENBERGER

Senior Associate
212.468.5951
mfreudenberg@meridiancapital.com

WILL SINE

Associate
212.468.5945
wsine@meridiancapital.com



MERIDIAN
RETAIL LEASING

All information supplied is from sources deemed reliable and is furnished subject to errors, omissions, modifications, removal of the listing from sale or lease, and to any listing conditions, including the rates and manner of payment of commissions for particular offerings imposed by Meridian Capital Group. This information may include estimates and projections prepared by Meridian Capital Group with respect to future events, and these future events may or may not actually occur. Such estimates and projections reflect various assumptions concerning anticipated results. While Meridian Capital Group believes these assumptions are reasonable, there can be no assurance that any of these estimates and projections will be correct. Therefore, actual results may vary materially from these estimates and projections. Any square footage dimensions set forth are approximate.

166-12 JAMAICA AVENUE

JAMAICA, QUEENS | Between Merrick Boulevard and 168th Street

RETAIL/RESTAURANT FOR LEASE



NEIGHBORS

NOAM AZIZ

Senior Director
212.468.5984
naziz@meridiancapital.com

MAX FREUDENBERGER

Senior Associate
212.468.5951
mfreudenberg@meridiancapital.com

WILL SINE

Associate
212.468.5945
wsine@meridiancapital.com



MERIDIAN
RETAIL LEASING

All information supplied is from sources deemed reliable and is furnished subject to errors, omissions, modifications, removal of the listing from sale or lease, and to any listing conditions, including the rates and manner of payment of commissions for particular offerings imposed by Meridian Capital Group. This information may include estimates and projections prepared by Meridian Capital Group with respect to future events, and these future events may or may not actually occur. Such estimates and projections reflect various assumptions concerning anticipated results. While Meridian Capital Group believes these assumptions are reasonable, there can be no assurance that any of these estimates and projections will be correct. Therefore, actual results may vary materially from these estimates and projections. Any square footage dimensions set forth are approximate.