

1542

FULTON STREET BED-STUY, BROOKLYN

Between Albany & Kingston Avenues

RETAIL/OFFICE FOR LEASE

APPROXIMATE SIZE
Second Floor: 2,700 SF

ASKING RENT
Upon Request

POSSESSION
Immediate

TERM
Negotiable

COMMENTS

- Large open layout
- High ceilings and large windows
- Transportation within walking distance
- Entertaining all uses including dance studio, yoga, offices, and retail

NEIGHBORS

Blink Fitness • Pizza Hut • Popeyes • Domino's
• Foodtown • USPS • Applebee's • Dollar Tree •
Taco Bell • Snipes • Planet Fitness • Café Bossa

TRANSPORTATION

A C



PROPERTY INFORMATION

ELLIOT WYGODA

Director
212.468.5968
ewygoda@meridiancapital.com

NICK HANNA

Associate
212.468.5920
nhanna@meridiancapital.com

SHAYA KATZ

Associate
212.468.5991
shaya.katz@meridiancapital.com



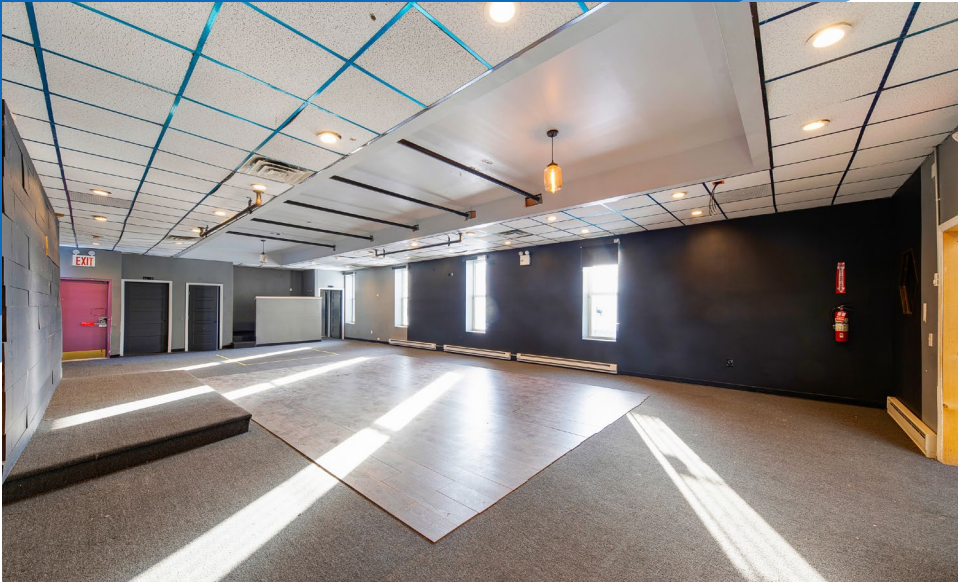
MERIDIAN
RETAIL LEASING

All information supplied is from sources deemed reliable and is furnished subject to errors, omissions, modifications, removal of the listing from sale or lease, and to any listing conditions, including the rates and manner of payment of commissions for particular offerings imposed by Meridian Capital Group. This information may include estimates and projections prepared by Meridian Capital Group with respect to future events, and these future events may or may not actually occur. Such estimates and projections reflect various assumptions concerning anticipated results. While Meridian Capital Group believes these assumptions are reasonable, there can be no assurance that any of these estimates and projections will be correct. Therefore, actual results may vary materially from these estimates and projections. Any square footage dimensions set forth are approximate.

1542 FULTON STREET

BED-STUY, BROOKLYN | Between Kingston and Albany Avenues

RETAIL/OFFICE FOR LEASE



INTERIOR

ELLIOT WYGODA

Director
212.468.5968
ewygoda@meridiancapital.com

NICK HANNA

Associate
212.468.5920
nhanna@meridiancapital.com

SHAYA KATZ

Associate
212.468.5991
shaya.katz@meridiancapital.com



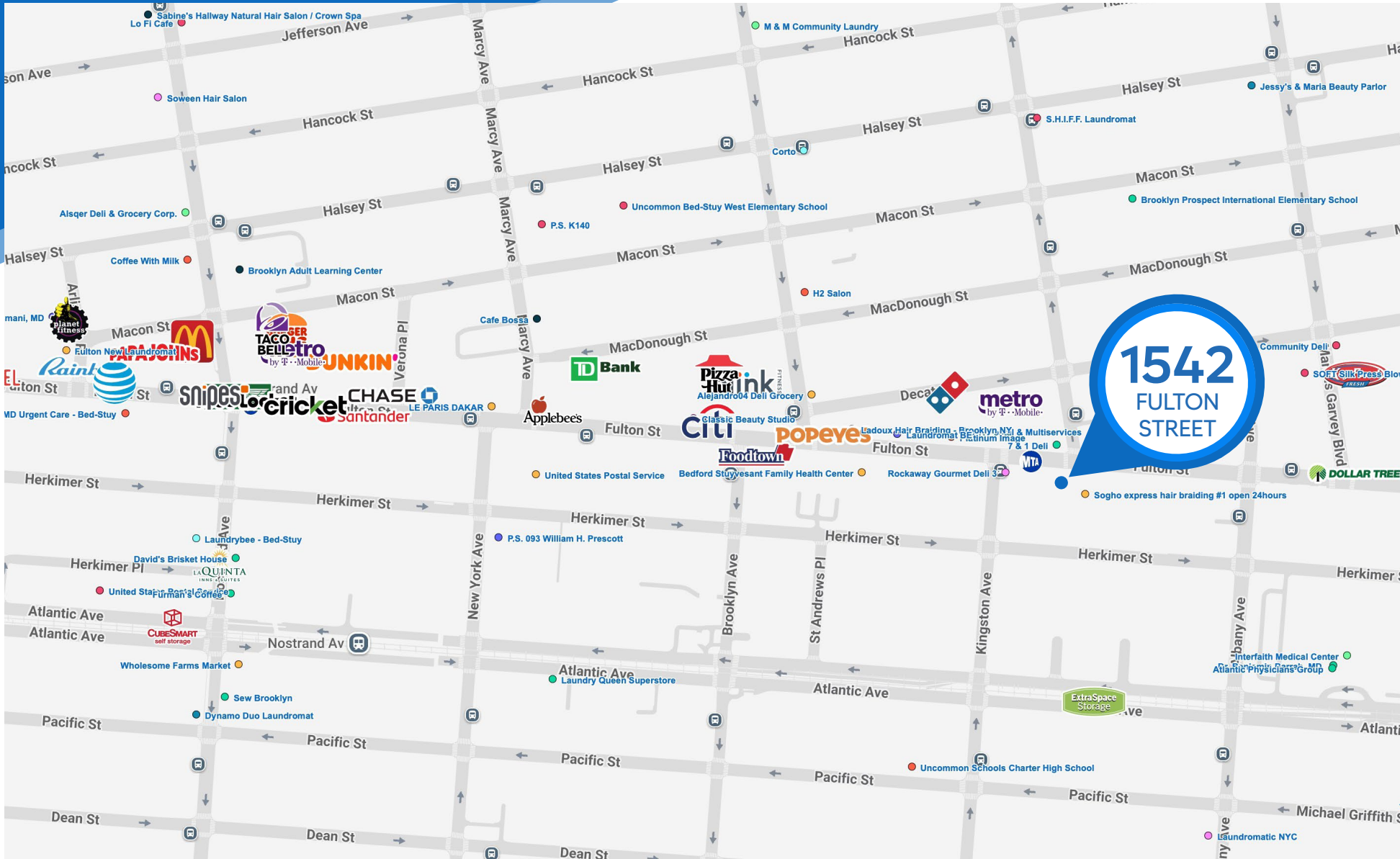
MERIDIAN
RETAIL LEASING

All information supplied is from sources deemed reliable and is furnished subject to errors, omissions, modifications, removal of the listing from sale or lease, and to any listing conditions, including the rates and manner of payment of commissions for particular offerings imposed by Meridian Capital Group. This information may include estimates and projections prepared by Meridian Capital Group with respect to future events, and these future events may or may not actually occur. Such estimates and projections reflect various assumptions concerning anticipated results. While Meridian Capital Group believes these assumptions are reasonable, there can be no assurance that any of these estimates and projections will be correct. Therefore, actual results may vary materially from these estimates and projections. Any square footage dimensions set forth are approximate.

1542 FULTON STREET

BED-STUY, BROOKLYN | Between Albany and Kingston Avenues

RESTAURANT FOR LEASE



NEIGHBORS

ELLIOT WYCODA
Director
212.468.5968
ewygod@meridiancapital.com

NICK HANNA
Associate
212.468.5920
nhanna@meridiancapital.com

SHAYA KATZ
Associate
212.468.5991
shaya.katz@meridiancapital.com



All information supplied is from sources deemed reliable and is furnished subject to errors, omissions, modifications, removal of the listing from sale or lease, and to any listing conditions, including the rates and manner of payment of commissions for particular offerings imposed by Meridian Capital Group. This information may include estimates and projections prepared by Meridian Capital Group with respect to future events, and these future events may or may not actually occur. Such estimates and projections reflect various assumptions concerning anticipated results. While Meridian Capital Group believes these assumptions are reasonable, there can be no assurance that any of these estimates and projections will be correct. Therefore, actual results may vary materially from these estimates and projections. Any square footage dimensions set forth are approximate.