

332A

9TH STREET
PARK SLOPE, BROOKLYN

Between 5th & 6th Avenues

OFFICE/MEDICAL FOR LEASE

APPROXIMATE SIZE

2,000 SF + Selling Lower Level

ASKING RENT

~~\$10,000/Month~~ Reduced
\$8,900/Month

POSSESSION

Immediate

TERM

Negotiable

FRONTAGE

15 FT

COMMENTS

- Turn-key medical space with 8 medical rooms
- Useable lower level
- Small backyard area on the ground floor
- Strong medical co-tenancy

NEIGHBORS

Webster Bank • Golden Shovel • Bar Toto • Dunkin'
• Mattress Firm • Paddy's of Park Slope • Muse
Café • Brooklyn Bread Café • Massage Envy

TRANSPORTATION



PROPERTY INFORMATION

ELLIOT WYGODA

Director
212.468.5968
ewygoda@meridiancapital.com

NICK HANNA

Associate
212.468.5920
nhanna@meridiancapital.com



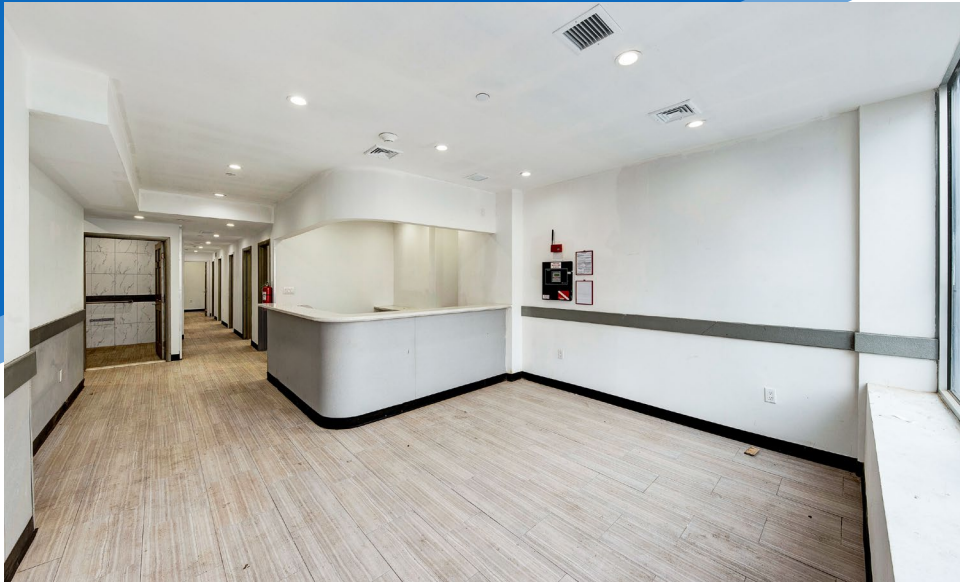
MERIDIAN
RETAIL LEASING

All information supplied is from sources deemed reliable and is furnished subject to errors, omissions, modifications, removal of the listing from sale or lease, and to any listing conditions, including the rates and manner of payment of commissions for particular offerings imposed by Meridian Capital Group. This information may include estimates and projections prepared by Meridian Capital Group with respect to future events, and these future events may or may not actually occur. Such estimates and projections reflect various assumptions concerning anticipated results. While Meridian Capital Group believes these assumptions are reasonable, there can be no assurance that any of these estimates and projections will be correct. Therefore, actual results may vary materially from these estimates and projections. Any square footage dimensions set forth are approximate.

332A 9TH STREET

PARK SLOPE, BROOKLYN | Between 5th and 6th Avenues

OFFICE/MEDICAL FOR LEASE



INTERIOR

ELLIOT WYGODA

Director
212.468.5968
ewygoda@meridiancapital.com

NICK HANNA

Associate
212.468.5920
nhanna@meridiancapital.com



MERIDIAN
RETAIL LEASING

All information supplied is from sources deemed reliable and is furnished subject to errors, omissions, modifications, removal of the listing from sale or lease, and to any listing conditions, including the rates and manner of payment of commissions for particular offerings imposed by Meridian Capital Group. This information may include estimates and projections prepared by Meridian Capital Group with respect to future events, and these future events may or may not actually occur. Such estimates and projections reflect various assumptions concerning anticipated results. While Meridian Capital Group believes these assumptions are reasonable, there can be no assurance that any of these estimates and projections will be correct. Therefore, actual results may vary materially from these estimates and projections. Any square footage dimensions set forth are approximate.

332A 9TH STREET

PARK SLOPE, BROOKLYN | Between 5th and 6th Avenues

OFFICE/MEDICAL FOR LEASE



NEIGHBORS

ELLIOT WYGODA

Director
212.468.5968
ewygoda@meridiancapital.com

NICK HANNA

Associate
212.468.5920
nhanna@meridiancapital.com



MERIDIAN
RETAIL LEASING

All information supplied is from sources deemed reliable and is furnished subject to errors, omissions, modifications, removal of the listing from sale or lease, and to any listing conditions, including the rates and manner of payment of commissions for particular offerings imposed by Meridian Capital Group. This information may include estimates and projections prepared by Meridian Capital Group with respect to future events, and these future events may or may not actually occur. Such estimates and projections reflect various assumptions concerning anticipated results. While Meridian Capital Group believes these assumptions are reasonable, there can be no assurance that any of these estimates and projections will be correct. Therefore, actual results may vary materially from these estimates and projections. Any square footage dimensions set forth are approximate.