

220-05

JAMAICA AVENUE QUEENS VILLAGE, QUEENS

Between 220th & 221st Streets

RETAIL FOR LEASE



APPROXIMATE SIZE

Lower Level: 4,500 SF

ASKING RENT

\$4,500/Month

POSSESSION

Immediate

TERM

Negotiable

FRONTAGE

15 FT

COMMENTS

- Lower level ideal for office, medical, therapy, and other wellness uses
- ADA-accessible

NEIGHBORS

Hibiscus Restaurant & Lounge • Mateus' Restaurant & Bar • Big John's Pizza & Pasta • Dunkin' • Public Storage • Pates Plus Bakery • Beauty by Kemmy Nails • Happy Kitchen

TRANSPORTATION

E

PROPERTY INFORMATION

NOAM AZIZ

Senior Director
212.468.5984
naziz@meridiancapital.com

MAX FREUDENBERGER

Senior Associate
212.468.5951
mfreudenberg@meridiancapital.com

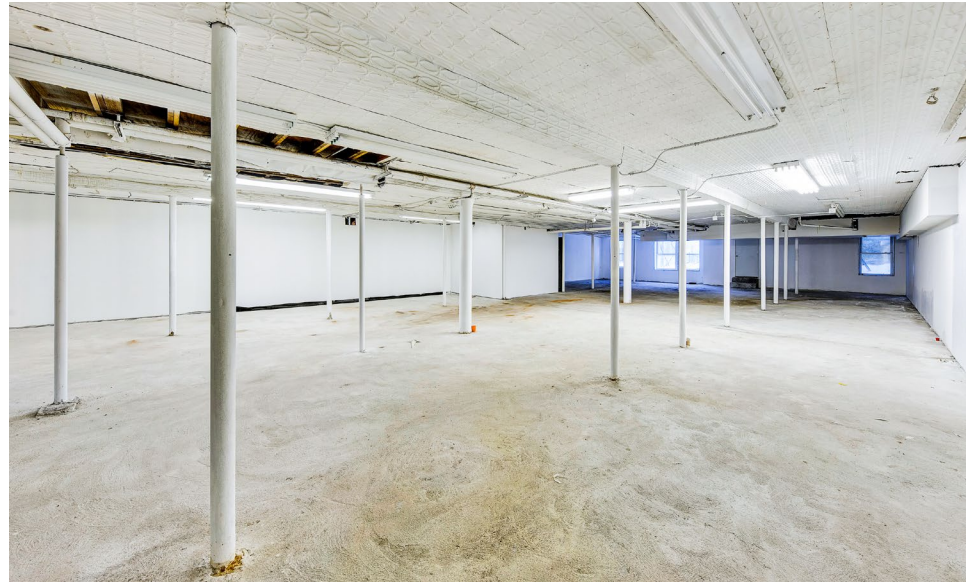
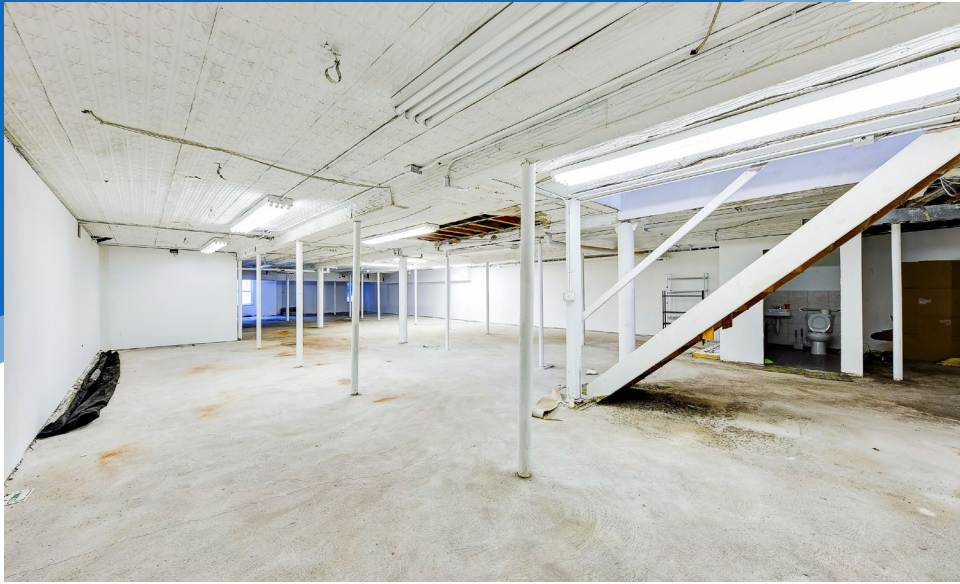
SHAYA KATZ

Associate
212.468.5991
shaya.katz@meridiancapital.com



MERIDIAN
RETAIL LEASING

All information supplied is from sources deemed reliable and is furnished subject to errors, omissions, modifications, removal of the listing from sale or lease, and to any listing conditions, including the rates and manner of payment of commissions for particular offerings imposed by Meridian Capital Group. This information may include estimates and projections prepared by Meridian Capital Group with respect to future events, and these future events may or may not actually occur. Such estimates and projections reflect various assumptions concerning anticipated results. While Meridian Capital Group believes these assumptions are reasonable, there can be no assurance that any of these estimates and projections will be correct. Therefore, actual results may vary materially from these estimates and projections. Any square footage dimensions set forth are approximate.



INTERIOR

NOAM AZIZ
Senior Director
212.468.5984
naziz@meridiancapital.com

MAX FREUDENBERGER
Senior Associate
212.468.5951
mfreudenberg@meridiancapital.com

SHAYA KATZ
Associate
212.468.5991
shaya.katz@meridiancapital.com

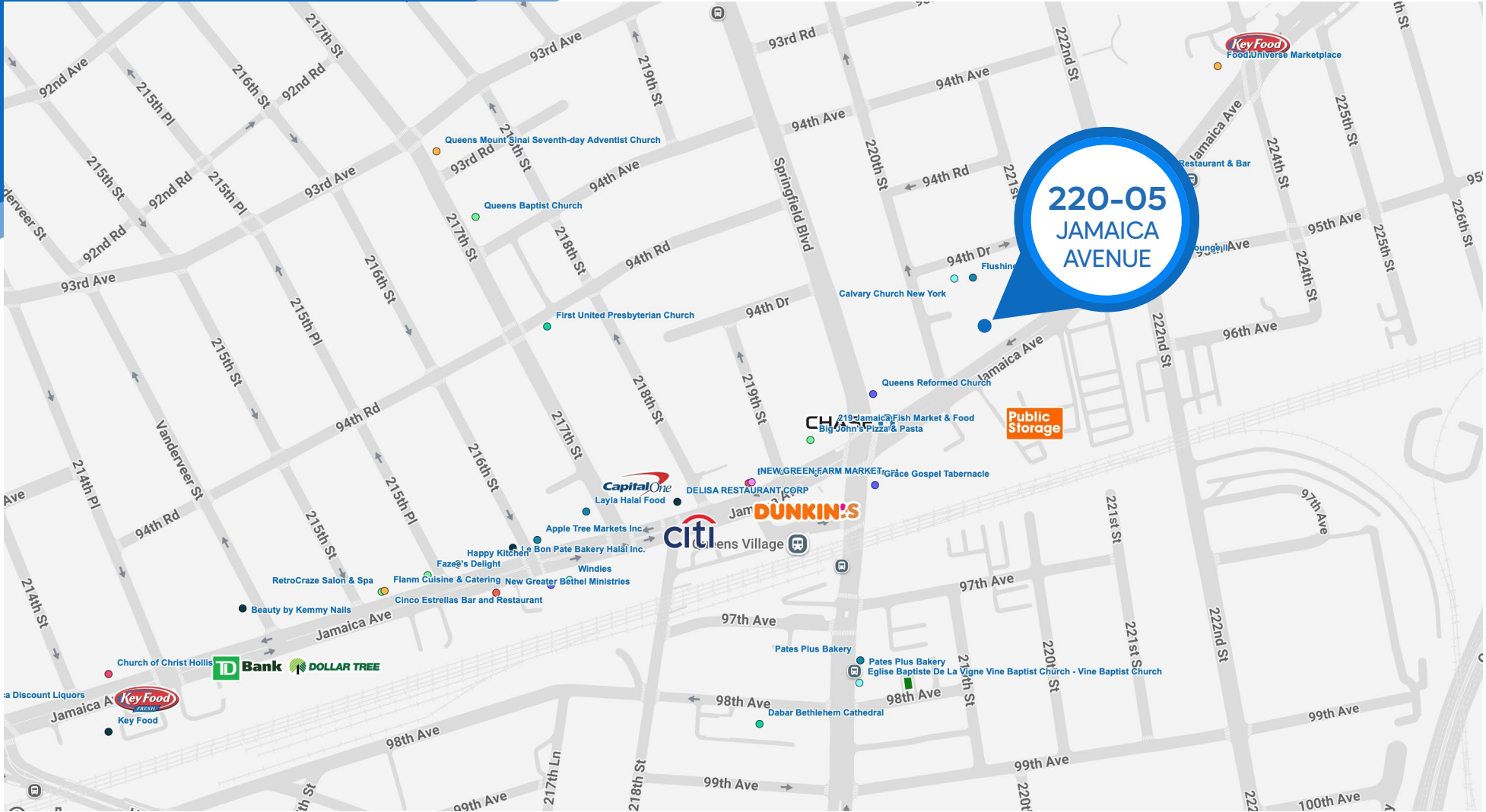


MERIDIAN
RETAIL LEASING

220-05 JAMAICA AVENUE

QUEENS VILLAGE, QUEENS | Between 220th and 221st Streets

RETAIL FOR LEASE



NEIGHBORS

NOAM AZIZ

Senior Director
212.468.5984
naziz@meridiancapital.com

MAX FREUDENBERGER

Senior Associate
212.468.5951
mfreudenberg@meridiancapital.com

SHAYA KATZ

Associate
212.468.5991
shaya.katz@meridiancapital.com



MERIDIAN
RETAIL LEASING

All information supplied is from sources deemed reliable and is furnished subject to errors, omissions, modifications, removal of the listing from sale or lease, and to any listing conditions, including the rates and manner of payment of commissions for particular offerings imposed by Meridian Capital Group. This information may include estimates and projections prepared by Meridian Capital Group with respect to future events, and these future events may or may not actually occur. Such estimates and projections reflect various assumptions concerning anticipated results. While Meridian Capital Group believes these assumptions are reasonable, there can be no assurance that any of these estimates and projections will be correct. Therefore, actual results may vary materially from these estimates and projections. Any square footage dimensions set forth are approximate.