

# 1998

THIRD AVENUE  
EAST HARLEM, NYC

Between East 109<sup>th</sup> & 110<sup>th</sup> Streets

RETAIL FOR LEASE



#### APPROXIMATE SIZE

Ground Floor: 1,200 SF + 400 SF Mezzanine  
Full Basement

#### ASKING RENT

\$8,500/Month

#### POSSESSION

Immediate

#### TERM

5-10 Years

#### FRONTAGE

15 FT

#### COMMENTS

- White-box condition with bathroom in place
- Interior access to basement
- Motivated landlord
- All uses considered

#### NEIGHBORS

A Taste of Seafood • Boly Barber Shop • The Glam Bar • China King • Mr. Moh's Deli • Pabade Café and Bakery • Top Nail & Spa • Carly's Hair spot • Fu Wing

#### TRANSPORTATION

6

PROPERTY INFORMATION

#### ALEC NAMDAR

Senior Associate  
212.468.5915  
anamdar@meridiancapital.com

#### DANIEL RACHLINE

Senior Associate  
212.468.5956  
drachline@meridiancapital.com



**MERIDIAN**  
RETAIL LEASING

All information supplied is from sources deemed reliable and is furnished subject to errors, omissions, modifications, removal of the listing from sale or lease, and to any listing conditions, including the rates and manner of payment of commissions for particular offerings imposed by Meridian Capital Group. This information may include estimates and projections prepared by Meridian Capital Group with respect to future events, and these future events may or may not actually occur. Such estimates and projections reflect various assumptions concerning anticipated results. While Meridian Capital Group believes these assumptions are reasonable, there can be no assurance that any of these estimates and projections will be correct. Therefore, actual results may vary materially from these estimates and projections. Any square footage dimensions set forth are approximate.

# 1998 THIRD AVENUE

EAST HARLEM, NYC | Between East 109<sup>th</sup> and 110<sup>th</sup> Streets

RETAIL FOR LEASE



INTERIOR

## ALEC NAMDAR

Senior Associate  
212.468.5915  
anamdar@meridiancapital.com

## DANIEL RACHLINE

Senior Associate  
212.468.5956  
drachline@meridiancapital.com



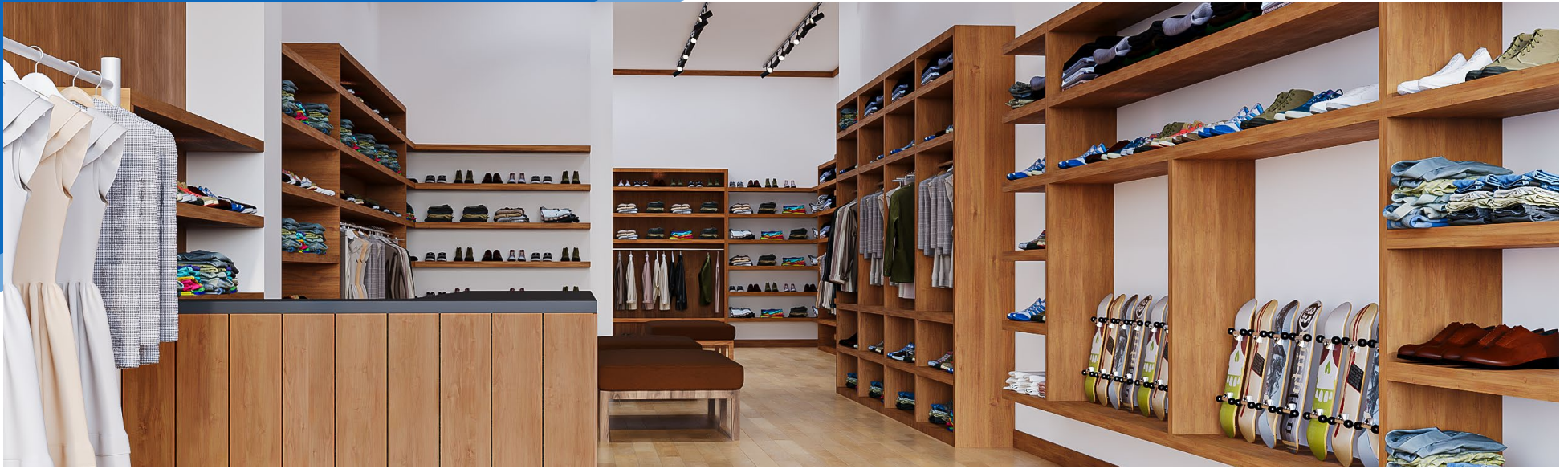
**MERIDIAN**  
RETAIL LEASING

All information supplied is from sources deemed reliable and is furnished subject to errors, omissions, modifications, removal of the listing from sale or lease, and to any listing conditions, including the rates and manner of payment of commissions for particular offerings imposed by Meridian Capital Group. This information may include estimates and projections prepared by Meridian Capital Group with respect to future events, and these future events may or may not actually occur. Such estimates and projections reflect various assumptions concerning anticipated results. While Meridian Capital Group believes these assumptions are reasonable, there can be no assurance that any of these estimates and projections will be correct. Therefore, actual results may vary materially from these estimates and projections. Any square footage dimensions set forth are approximate.

# 1998 THIRD AVENUE

EAST HARLEM, NYC | Between East 109<sup>th</sup> and 110<sup>th</sup> Streets

RETAIL FOR LEASE



INTERIOR | RENDERINGS

## ALEC NAMDAR

Senior Associate  
212.468.5915  
anamdar@meridiancapital.com

## DANIEL RACHLINE

Senior Associate  
212.468.5956  
drachline@meridiancapital.com



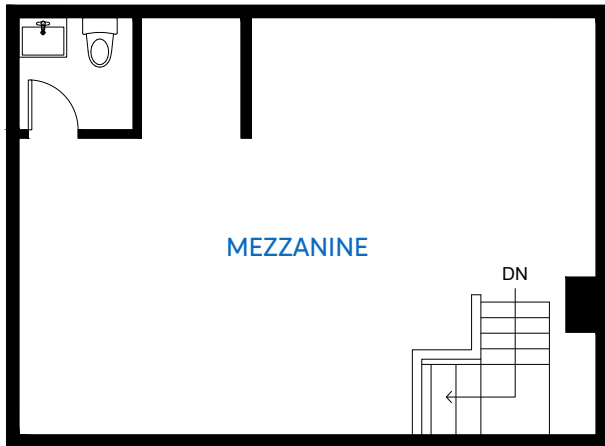
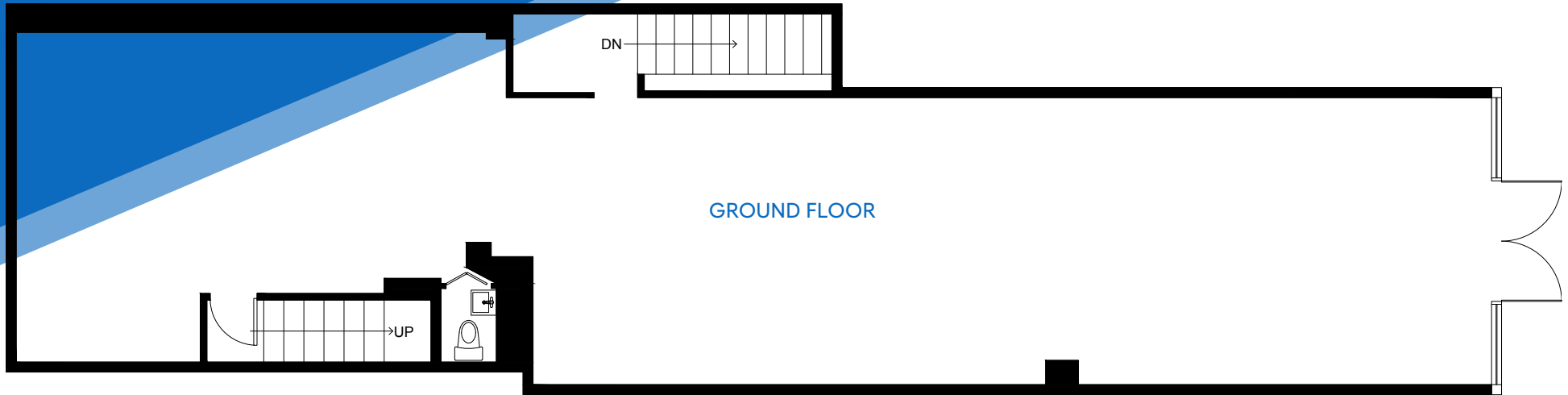
**MERIDIAN**  
RETAIL LEASING

All information supplied is from sources deemed reliable and is furnished subject to errors, omissions, modifications, removal of the listing from sale or lease, and to any listing conditions, including the rates and manner of payment of commissions for particular offerings imposed by Meridian Capital Group. This information may include estimates and projections prepared by Meridian Capital Group with respect to future events, and these future events may or may not actually occur. Such estimates and projections reflect various assumptions concerning anticipated results. While Meridian Capital Group believes these assumptions are reasonable, there can be no assurance that any of these estimates and projections will be correct. Therefore, actual results may vary materially from these estimates and projections. Any square footage dimensions set forth are approximate.

# 1998 THIRD AVENUE

EAST HARLEM, NYC | Between East 109<sup>th</sup> and 110<sup>th</sup> Streets

RETAIL FOR LEASE



FLOOR PLAN

## ALEC NAMDAR

Senior Associate  
212.468.5915  
anamdar@meridiancapital.com

## DANIEL RACHLINE

Senior Associate  
212.468.5956  
drachline@meridiancapital.com



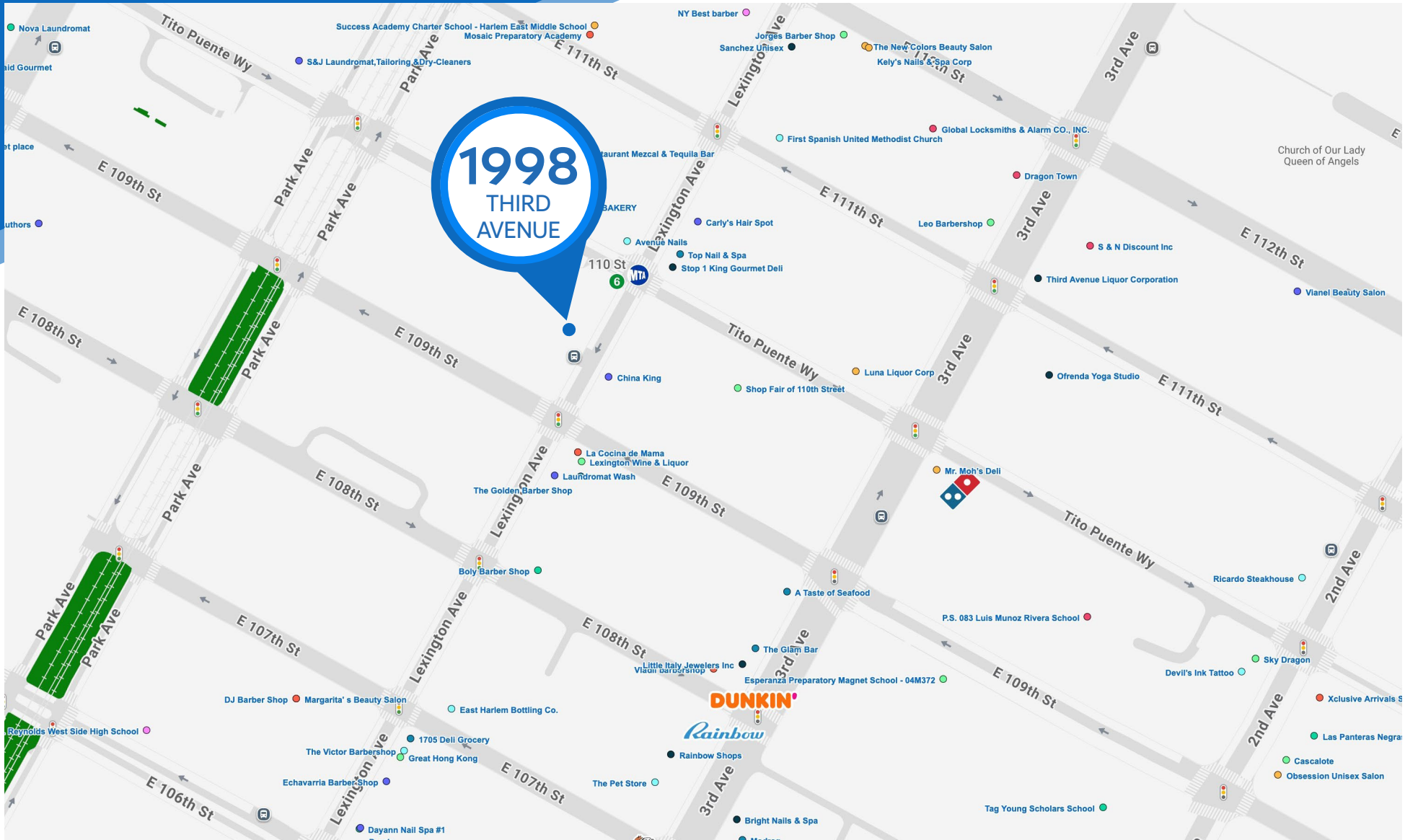
**MERIDIAN**  
RETAIL LEASING

All information supplied is from sources deemed reliable and is furnished subject to errors, omissions, modifications, removal of the listing from sale or lease, and to any listing conditions, including the rates and manner of payment of commissions for particular offerings imposed by Meridian Capital Group. This information may include estimates and projections prepared by Meridian Capital Group with respect to future events, and these future events may or may not actually occur. Such estimates and projections reflect various assumptions concerning anticipated results. While Meridian Capital Group believes these assumptions are reasonable, there can be no assurance that any of these estimates and projections will be correct. Therefore, actual results may vary materially from these estimates and projections. Any square footage dimensions set forth are approximate.

# 1998 THIRD AVENUE

EAST HARLEM, NYC | Between East 109<sup>th</sup> and 110<sup>th</sup> Streets

RETAIL FOR LEASE



NEIGHBORS

## ALEC NAMDAR

Senior Associate  
212.468.5915  
anamdar@meridiancapital.com

## DANIEL RACHLINE

Senior Associate  
212.468.5956  
drachline@meridiancapital.com



**MERIDIAN**  
RETAIL LEASING

All information supplied is from sources deemed reliable and is furnished subject to errors, omissions, modifications, removal of the listing from sale or lease, and to any listing conditions, including the rates and manner of payment of commissions for particular offerings imposed by Meridian Capital Group. This information may include estimates and projections prepared by Meridian Capital Group with respect to future events, and these future events may or may not actually occur. Such estimates and projections reflect various assumptions concerning anticipated results. While Meridian Capital Group believes these assumptions are reasonable, there can be no assurance that any of these estimates and projections will be correct. Therefore, actual results may vary materially from these estimates and projections. Any square footage dimensions set forth are approximate.