

112

SUFFOLK STREET LOWER EAST SIDE, NYC

Between Delancey & Rivington Streets

RESTAURANT FOR LEASE

APPROXIMATE SIZE

Ground Floor: 1,700 SF
Full Selling Lower Level

ASKING RENT

\$9,000/Month

POSSESSION

Immediate

TERM

10-15 Years

FRONTAGE

20 FT

COMMENTS

- Previously "Antibes Bistro"
- Walk-in cooler
- Venting possible
- Previous beer and wine license
- Former restaurant operated for 15 years
- Steady traffic on Suffolk Street

NEIGHBORS

Pilates Coven • WhitFit NYC • Urban Studio •
La Contenta • Sugar Sweet Sunshine Bakery •
Unregular Pizza • Fringe Salon • Ramen Ishida •
The Delancey Rooftop • Beauty & Essex

TRANSPORTATION



JAMES FAMULARO

President
646.658.7373
jfamularo@meridiancapital.com

COLE KLEPPINGER

Senior Associate
212.468.5993
ckleppinger@meridiancapital.com



MERIDIAN
RETAIL LEASING

All information supplied is from sources deemed reliable and is furnished subject to errors, omissions, modifications, removal of the listing from sale or lease, and to any listing conditions, including the rates and manner of payment of commissions for particular offerings imposed by Meridian Capital Group. This information may include estimates and projections prepared by Meridian Capital Group with respect to future events, and these future events may or may not actually occur. Such estimates and projections reflect various assumptions concerning anticipated results. While Meridian Capital Group believes these assumptions are reasonable, there can be no assurance that any of these estimates and projections will be correct. Therefore, actual results may vary materially from these estimates and projections. Any square footage dimensions set forth are approximate.

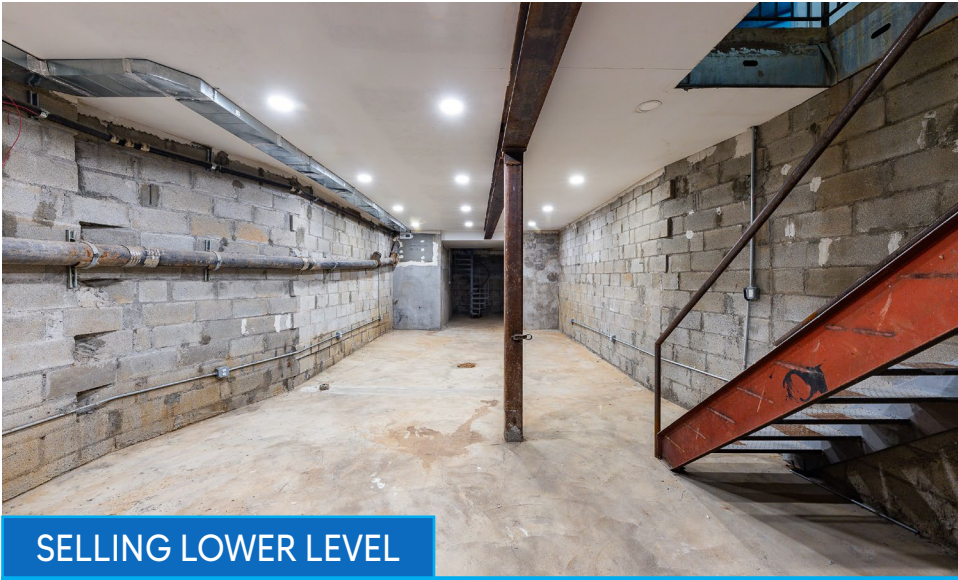
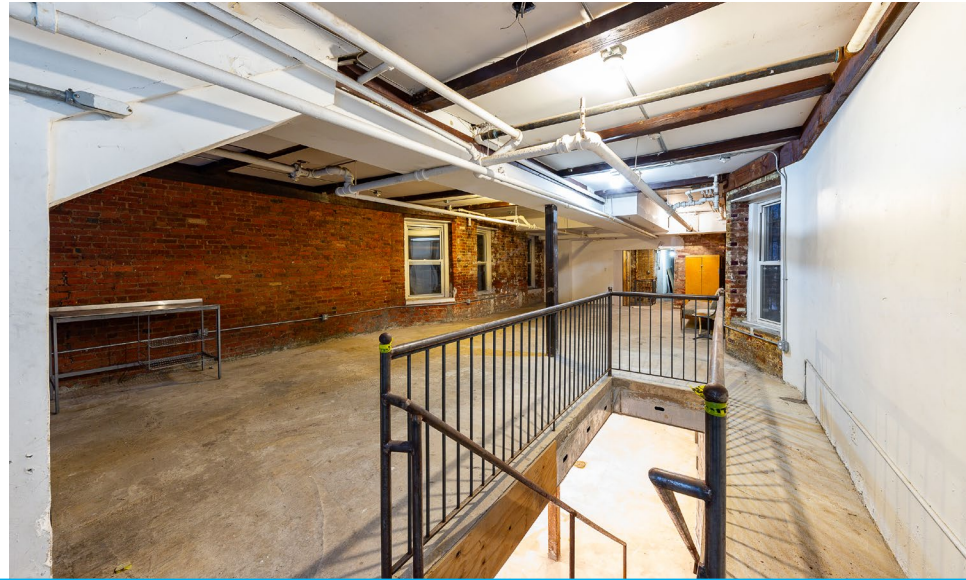
112 SUFFOLK STREET

LOWER EAST SIDE, NYC | Between Delancey and Rivington Streets

RESTAURANT FOR LEASE



GROUND FLOOR



SELLING LOWER LEVEL



INTERIOR

JAMES FAMULARO

President
646.658.7373
jfamularo@meridiancapital.com

COLE KLEPPINGER

Senior Associate
212.468.5993
ckleppinger@meridiancapital.com



MERIDIAN
RETAIL LEASING

All information supplied is from sources deemed reliable and is furnished subject to errors, omissions, modifications, removal of the listing from sale or lease, and to any listing conditions, including the rates and manner of payment of commissions for particular offerings imposed by Meridian Capital Group. This information may include estimates and projections prepared by Meridian Capital Group with respect to future events, and these future events may or may not actually occur. Such estimates and projections reflect various assumptions concerning anticipated results. While Meridian Capital Group believes these assumptions are reasonable, there can be no assurance that any of these estimates and projections will be correct. Therefore, actual results may vary materially from these estimates and projections. Any square footage dimensions set forth are approximate.

112 SUFFOLK STREET

LOWER EAST SIDE, NYC | Between Delancey and Rivington Streets

RESTAURANT FOR LEASE



PREVIOUS INTERIOR

JAMES FAMULARO

President
646.658.7373
jfamularo@meridiancapital.com

COLE KLEPPINGER

Senior Associate
212.468.5993
ckleppinger@meridiancapital.com



MERIDIAN
RETAIL LEASING

All information supplied is from sources deemed reliable and is furnished subject to errors, omissions, modifications, removal of the listing from sale or lease, and to any listing conditions, including the rates and manner of payment of commissions for particular offerings imposed by Meridian Capital Group. This information may include estimates and projections prepared by Meridian Capital Group with respect to future events, and these future events may or may not actually occur. Such estimates and projections reflect various assumptions concerning anticipated results. While Meridian Capital Group believes these assumptions are reasonable, there can be no assurance that any of these estimates and projections will be correct. Therefore, actual results may vary materially from these estimates and projections. Any square footage dimensions set forth are approximate.



NEIGHBORS

JAMES FAMULARO
 President
 646.658.7373
 jfamularo@meridiancapital.com

COLE KLEPPINGER
 Senior Associate
 212.468.5993
 ckleppinger@meridiancapital.com



MERIDIAN
 RETAIL LEASING

All information supplied is from sources deemed reliable and is furnished subject to errors, omissions, modifications, removal of the listing from sale or lease, and to any listing conditions, including the rates and manner of payment of commissions for particular offerings imposed by Meridian Capital Group. This information may include estimates and projections prepared by Meridian Capital Group with respect to future events, and these future events may or may not actually occur. Such estimates and projections reflect various assumptions concerning anticipated results. While Meridian Capital Group believes these assumptions are reasonable, there can be no assurance that any of these estimates and projections will be correct. Therefore, actual results may vary materially from these estimates and projections. Any square footage dimensions set forth are approximate.