

8-12

WEST FORDHAM ROAD FORDHAM, BRONX

Between Davidson & Jerome Avenues

RESTAURANT FOR LEASE



APPROXIMATE SIZE

1,800 SF + Full Basement

ASKING RENT

~~\$14,500/Month~~ Reduced
\$13,500/Month

POSSESSION

March 1st, 2026

TERM

Negotiable

FRONTAGE

40 FT

COMMENTS

- Turn-key restaurant with gas, vent, and fully built-out kitchen
- Dense retail corridor on West Fordham Road surrounded by residential, commercial, and student population nearby
- Ideal for QSR and other restaurant concepts

NEIGHBORS

Taco Bell • McDonald's • Key Food • Blink Fitness
• El Valle Renacer • Boost Mobile • Family Dollar •
PS 033 Timothy Dwight • Kennedy Fried Chicken

TRANSPORTATION



NOAM AZIZ

Senior Director
212.468.5984
naziz@meridiancapital.com

DANIEL ZACAİM

Associate
212.468.5910
dzacaim@meridiancapital.com



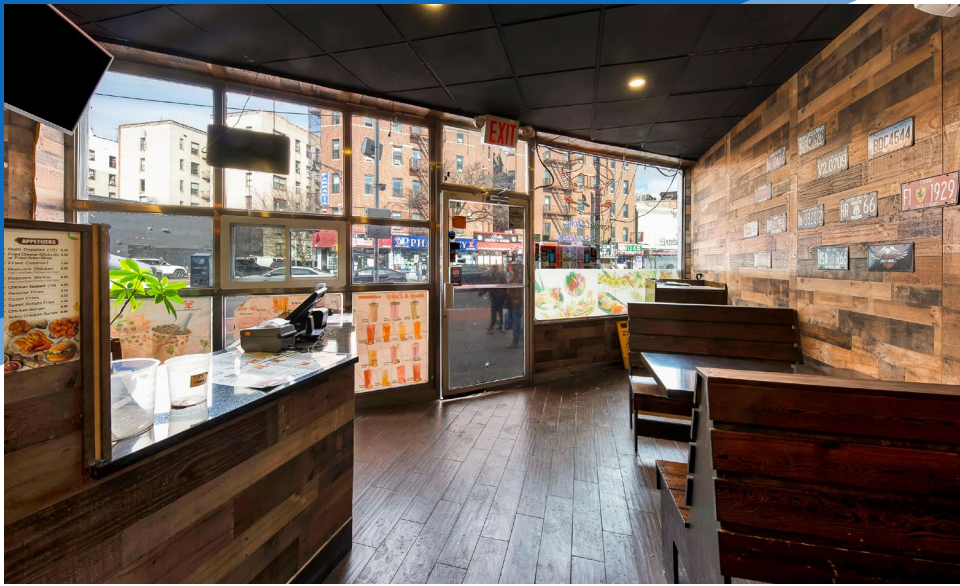
MERIDIAN
RETAIL LEASING

All information supplied is from sources deemed reliable and is furnished subject to errors, omissions, modifications, removal of the listing from sale or lease, and to any listing conditions, including the rates and manner of payment of commissions for particular offerings imposed by Meridian Capital Group. This information may include estimates and projections prepared by Meridian Capital Group with respect to future events, and these future events may or may not actually occur. Such estimates and projections reflect various assumptions concerning anticipated results. While Meridian Capital Group believes these assumptions are reasonable, there can be no assurance that any of these estimates and projections will be correct. Therefore, actual results may vary materially from these estimates and projections. Any square footage dimensions set forth are approximate.

8-12 WEST FORDHAM ROAD

FORDHAM, BRONX | Between Davidson and Jerome Avenues

RESTAURANT FOR LEASE



INTERIOR

NOAM AZIZ
Senior Director
212.468.5984
naziz@meridiancapital.com

DANIEL ZACAIM
Associate
212.468.5910
dzacaim@meridiancapital.com



MERIDIAN
RETAIL LEASING

All information supplied is from sources deemed reliable and is furnished subject to errors, omissions, modifications, removal of the listing from sale or lease, and to any listing conditions, including the rates and manner of payment of commissions for particular offerings imposed by Meridian Capital Group. This information may include estimates and projections prepared by Meridian Capital Group with respect to future events, and these future events may or may not actually occur. Such estimates and projections reflect various assumptions concerning anticipated results. While Meridian Capital Group believes these assumptions are reasonable, there can be no assurance that any of these estimates and projections will be correct. Therefore, actual results may vary materially from these estimates and projections. Any square footage dimensions set forth are approximate.

8-12 WEST FORDHAM ROAD

FORDHAM, BRONX | Between Davidson and Jerome Avenues

RESTAURANT FOR LEASE



NEIGHBORS

NOAM AZIZ
Senior Director
212.468.5984
naziz@meridiancapital.com

DANIEL ZACAİM
Associate
212.468.5910
dzacaim@meridiancapital.com



MERIDIAN
RETAIL LEASING

All information supplied is from sources deemed reliable and is furnished subject to errors, omissions, modifications, removal of the listing from sale or lease, and to any listing conditions, including the rates and manner of payment of commissions for particular offerings imposed by Meridian Capital Group. This information may include estimates and projections prepared by Meridian Capital Group with respect to future events, and these future events may or may not actually occur. Such estimates and projections reflect various assumptions concerning anticipated results. While Meridian Capital Group believes these assumptions are reasonable, there can be no assurance that any of these estimates and projections will be correct. Therefore, actual results may vary materially from these estimates and projections. Any square footage dimensions set forth are approximate.