

310

EAST 6TH STREET
EAST VILLAGE, NYC

Between First & Second Avenues

RESTAURANT FOR LEASE

APPROXIMATE SIZE

Lower Level: 1,300 SF

ASKING RENT

~~\$7,500/Month~~ Reduced
\$7,000/Month

POSSESSION

Immediate

TERM

10-15 Years

FRONTAGE

25 FT

COMMENTS

- Previously "Taj Restaurant"
- Existing infrastructure ready for use
- Vented with gas
- Newly white-boxed and upgraded facade
- Possibility for outdoor seating
- All uses considered

NEIGHBORS

Paradise Lost • Curry Flavor NYC • Raku • Spicy Moon • Van Leeuwen • Elsewhere Espresso • Yubu • Cooper Union • San Marzano • Bloomie Nails

TRANSPORTATION



PROPERTY INFORMATION

JAMES FAMULARO

President
646.658.7373
jfamularo@meridiancapital.com

COLE KLEPPINGER

Senior Associate
212.468.5993
ckleppinger@meridiancapital.com

WILL SINE

Associate
212.468.5945
wsine@meridiancapital.com



MERIDIAN
RETAIL LEASING

All information supplied is from sources deemed reliable and is furnished subject to errors, omissions, modifications, removal of the listing from sale or lease, and to any listing conditions, including the rates and manner of payment of commissions for particular offerings imposed by Meridian Capital Group. This information may include estimates and projections prepared by Meridian Capital Group with respect to future events, and these future events may or may not actually occur. Such estimates and projections reflect various assumptions concerning anticipated results. While Meridian Capital Group believes these assumptions are reasonable, there can be no assurance that any of these estimates and projections will be correct. Therefore, actual results may vary materially from these estimates and projections. Any square footage dimensions set forth are approximate.

310 EAST 6TH STREET

EAST VILLAGE, NYC | Between First and Second Avenues

RESTAURANT FOR LEASE



INTERIOR

JAMES FAMULARO

President
646.658.7373
jfamularo@meridiancapital.com

COLE KLEPPINGER

Senior Associate
212.468.5993
ckleppinger@meridiancapital.com

WILL SINE

Associate
212.468.5945
wsine@meridiancapital.com



MERIDIAN
RETAIL LEASING

All information supplied is from sources deemed reliable and is furnished subject to errors, omissions, modifications, removal of the listing from sale or lease, and to any listing conditions, including the rates and manner of payment of commissions for particular offerings imposed by Meridian Capital Group. This information may include estimates and projections prepared by Meridian Capital Group with respect to future events, and these future events may or may not actually occur. Such estimates and projections reflect various assumptions concerning anticipated results. While Meridian Capital Group believes these assumptions are reasonable, there can be no assurance that any of these estimates and projections will be correct. Therefore, actual results may vary materially from these estimates and projections. Any square footage dimensions set forth are approximate.

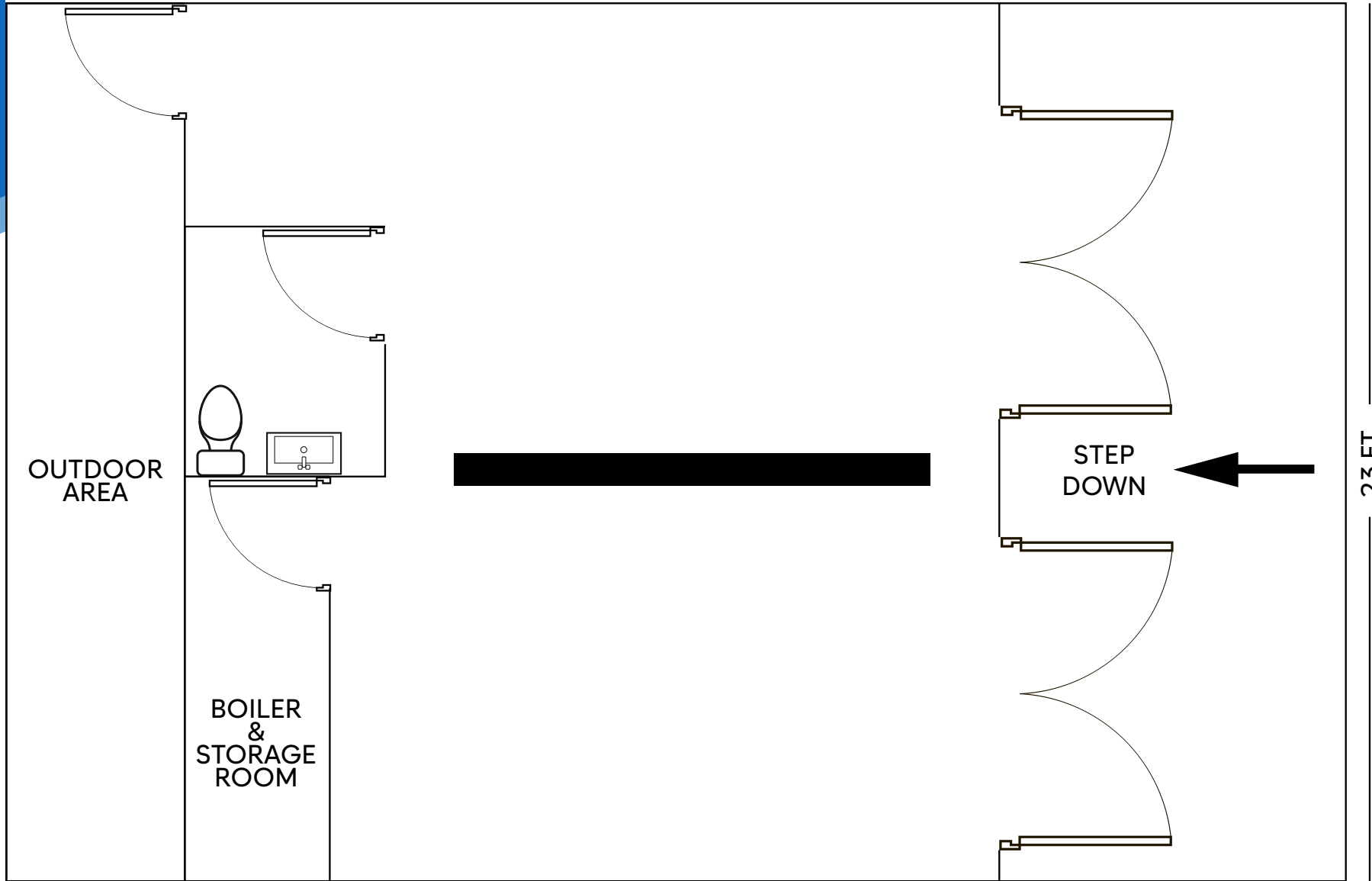
310 EAST 6TH STREET

EAST VILLAGE, NYC | Between First and Second Avenues

RESTAURANT FOR LEASE

52 FT

FLOOR PLAN



23 FT

JAMES FAMULARO

President
646.658.7373
jfamularo@meridiancapital.com

COLE KLEPPINGER

Senior Associate
212.468.5993
ckleppinger@meridiancapital.com

WILL SINE

Associate
212.468.5945
wsine@meridiancapital.com



MERIDIAN
RETAIL LEASING

All information supplied is from sources deemed reliable and is furnished subject to errors, omissions, modifications, removal of the listing from sale or lease, and to any listing conditions, including the rates and manner of payment of commissions for particular offerings imposed by Meridian Capital Group. This information may include estimates and projections prepared by Meridian Capital Group with respect to future events, and these future events may or may not actually occur. Such estimates and projections reflect various assumptions concerning anticipated results. While Meridian Capital Group believes these assumptions are reasonable, there can be no assurance that any of these estimates and projections will be correct. Therefore, actual results may vary materially from these estimates and projections. Any square footage dimensions set forth are approximate.

310 EAST 6TH STREET

EAST VILLAGE, NYC | Between First and Second Avenues

RESTAURANT FOR LEASE

The map displays the following businesses and locations:

- Top Row (E 7th Street):** PROLETARIAT, BURP CASTLE NYC, BANK OF AMERICA, Uni K Wax, Mamma, nudibranch, MEMPHIS SEUL, ARIARI, Flower shop, INTERNATIONAL BAR, McDonald's, BASKIN-IBB ROBBINS, DUNKIN', Tile Bar.
- Second Row (E 7th Street):** Third Kingdom, Streecha, Standings, Good Stuff Gold Buyers, Bloomie Nails, REFINERY, Whiskey Cellar NYC, abraço.
- Third Row (E 6th Street):** COOPER UNION, SAINT GEORGE ACADEMY, THAI 4 thought, Le Petit Parisien, San Marzano, LE FOURNIL, VanLeeuwen, AGAVI, SETSUGEKKA, Redge Annex, 7th Street Village Farm, YUBU, SenYa, citi bike, mister paradise, HEARTY & HEALTHY, 345 East 6th Street.
- Fourth Row (E 6th Street):** THE UKRAINIAN MUSEUM, Bamboo House, Odysse, citi bike, Mela on the Sixth, CURRY flavor NYC, Miso Sushi, AWASH, RAKU, Secrets of Thai Cooking, Mayamezcal, Kohinoor Indian Cuisine, Spicy Moon, Arshad Azad, Panna II, Junoonn, Sigiri.
- Fifth Row (E 5th Street):** Lily Foot Spa Massage, COFFEE PROJECT NEW YORK, COOPER'S, FRANK, BAR SNACK, RYNN, Chakra, Goloka Juice Bar & Health Shop, J J Cleaners & Laundromat, FONG HONG, Emmy Squared.
- Bottom Row (E 5th Street):** B-BIT BITES, Desi Stop Deli, Anthony Cafe, Tamam, noona, CITY GLOW, RITE AID, The Sabiang Thai, SPICE.

NEIGHBORS

JAMES FAMULARO

President
646.658.7373
jfamularo@meridiancapital.com

COLE KLEPPINGER

Senior Associate
212.468.5993
ckleppinger@meridiancapital.com

WILL SINE

Associate
212.468.5945
wsine@meridiancapital.com



MERIDIAN
RETAIL LEASING

All information supplied is from sources deemed reliable and is furnished subject to errors, omissions, modifications, removal of the listing from sale or lease, and to any listing conditions, including the rates and manner of payment of commissions for particular offerings imposed by Meridian Capital Group. This information may include estimates and projections prepared by Meridian Capital Group with respect to future events, and these future events may or may not actually occur. Such estimates and projections reflect various assumptions concerning anticipated results. While Meridian Capital Group believes these assumptions are reasonable, there can be no assurance that any of these estimates and projections will be correct. Therefore, actual results may vary materially from these estimates and projections. Any square footage dimensions set forth are approximate.