

2667

FULTON STREET CYPRESS HILLS, BROOKLYN

Off the Corner of Fulton Street & New
Jersey Avenue

RETAIL FOR LEASE

APPROXIMATE SIZE

568 SF

ASKING RENT

Upon Request

POSSESSION

Immediate

TERM

Negotiable

FRONTAGE

20 FT

COMMENTS

- Retail at the base of a luxury building
- 14 FT high ceilings
- Floor-to-ceiling window frontage
- Open layout and private bathroom
- Amenities and parking available

NEIGHBORS

Citi Bank • McDonald's • Dunkin' • Doral Urgent
Care • Fine Fare Supermarkets • Ramada
by Wyndham • New Jersey Deli • Room
Hundred Brooklyn • Bonao Bar & Grill

TRANSPORTATION



PROPERTY INFORMATION

JACOB MAYER

Director
212.468.5926
jmayer@meridiancapital.com

SHAYA KATZ

Associate
212.468.5991
shaya.katz@meridiancapital.com



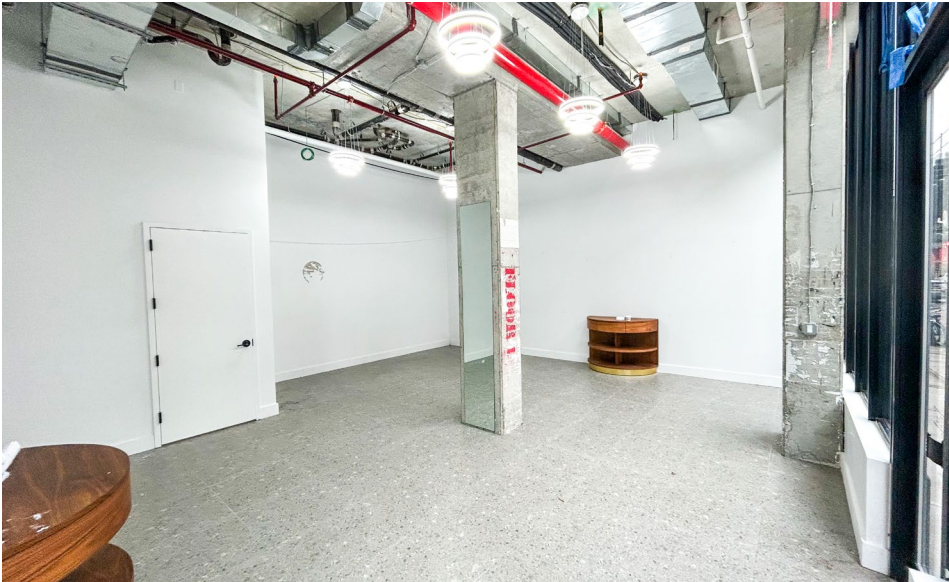
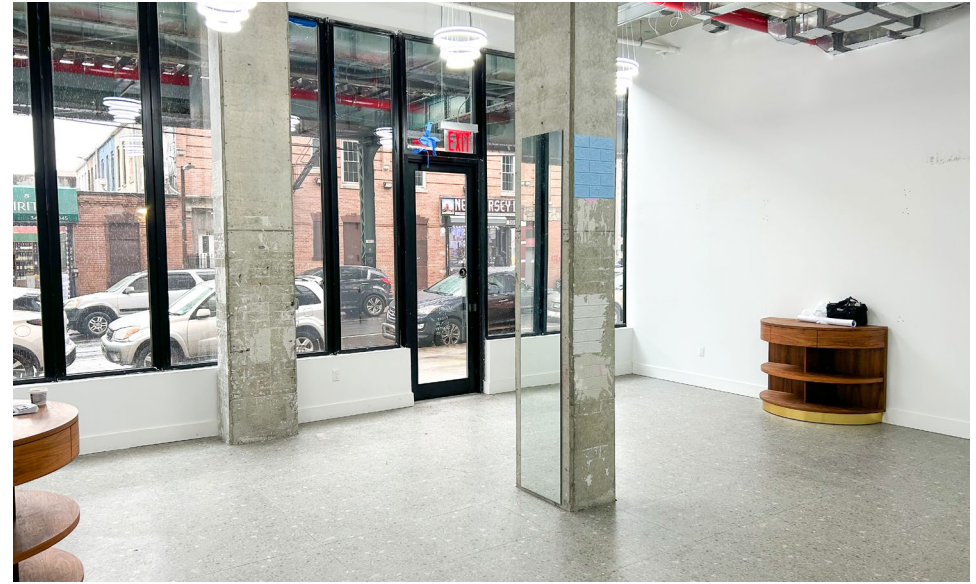
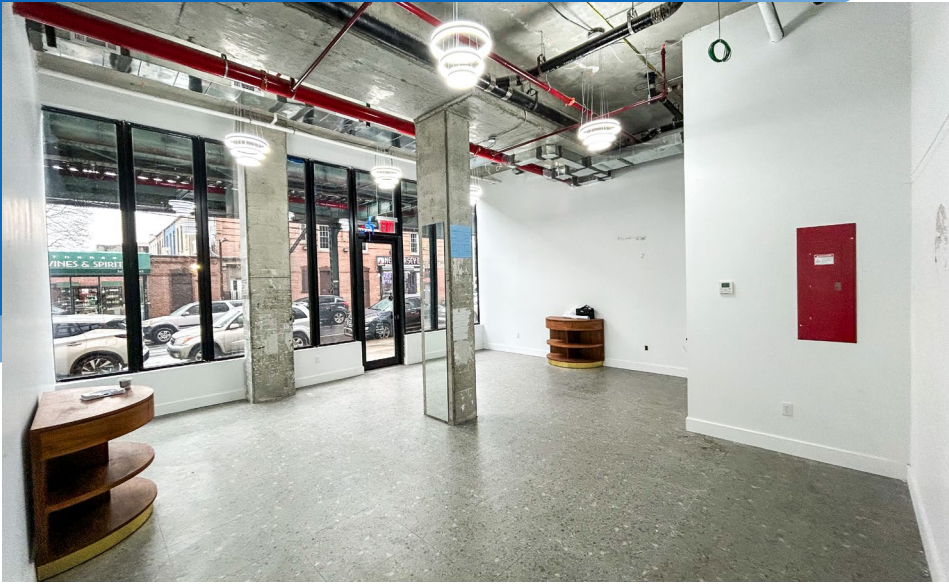
MERIDIAN
RETAIL LEASING

All information supplied is from sources deemed reliable and is furnished subject to errors, omissions, modifications, removal of the listing from sale or lease, and to any listing conditions, including the rates and manner of payment of commissions for particular offerings imposed by Meridian Capital Group. This information may include estimates and projections prepared by Meridian Capital Group with respect to future events, and these future events may or may not actually occur. Such estimates and projections reflect various assumptions concerning anticipated results. While Meridian Capital Group believes these assumptions are reasonable, there can be no assurance that any of these estimates and projections will be correct. Therefore, actual results may vary materially from these estimates and projections. Any square footage dimensions set forth are approximate.

2667 FULTON STREET

CYPRESS HILLS, BROOKLYN | Off the Corner of Fulton Street and New Jersey Avenue

RETAIL FOR LEASE



INTERIOR

JACOB MAYER

Director
212.468.5926
jmayer@meridiancapital.com

SHAYA KATZ

Associate
212.468.5991
shaya.katz@meridiancapital.com



MERIDIAN
RETAIL LEASING

All information supplied is from sources deemed reliable and is furnished subject to errors, omissions, modifications, removal of the listing from sale or lease, and to any listing conditions, including the rates and manner of payment of commissions for particular offerings imposed by Meridian Capital Group. This information may include estimates and projections prepared by Meridian Capital Group with respect to future events, and these future events may or may not actually occur. Such estimates and projections reflect various assumptions concerning anticipated results. While Meridian Capital Group believes these assumptions are reasonable, there can be no assurance that any of these estimates and projections will be correct. Therefore, actual results may vary materially from these estimates and projections. Any square footage dimensions set forth are approximate.

2667 FULTON STREET

CYPRESS HILLS, BROOKLYN | Off the Corner of Fulton Street and New Jersey Avenue

RETAIL FOR LEASE



NEIGHBORS

JACOB MAYER
 Director
 212.468.5926
 jmayer@meridiancapital.com

SHAYA KATZ
 Associate
 212.468.5991
 shaya.katz@meridiancapital.com



MERIDIAN
 RETAIL LEASING

All information supplied is from sources deemed reliable and is furnished subject to errors, omissions, modifications, removal of the listing from sale or lease, and to any listing conditions, including the rates and manner of payment of commissions for particular offerings imposed by Meridian Capital Group. This information may include estimates and projections prepared by Meridian Capital Group with respect to future events, and these future events may or may not actually occur. Such estimates and projections reflect various assumptions concerning anticipated results. While Meridian Capital Group believes these assumptions are reasonable, there can be no assurance that any of these estimates and projections will be correct. Therefore, actual results may vary materially from these estimates and projections. Any square footage dimensions set forth are approximate.