

172-02

HILLSIDE AVENUE

JAMAICA, QUEENS

Corner of Hillside Avenue & 173rd Street

RETAIL FOR LEASE



PROPERTY INFORMATION

APPROXIMATE SIZE

2,000 SF

ASKING RENT

\$60 PSF

POSSESSION

Immediate

TERM

5-15 Years

FRONTAGE

100+ FT Wraparound

COMMENTS

- Brand-new mixed-use development with strong corner exposure
- Expansive glass frontage
- Flexible configurations for retail, medical, and other neighborhood-service uses
- Strong pedestrian and vehicular traffic
- All uses considered

NEIGHBORS

Krispy Krunch Chicken • Carvel • IHop • Dollar Tree • White Castle • Kennedy Fried Chicken • China King • Taco Bell • Bank of America • Buffalo Wild Wings

TRANSPORTATION

F

NOAM AZIZ

Senior Director
212.468.5984
naziz@meridiancapital.com

MAX FREUDENBERGER

Senior Associate
212.468.5951
mfreudenberg@meridiancapital.com

BRADLEY BENILEVI

Associate
212.468.5967
bbenilevi@meridiancapital.com



MERIDIAN
RETAIL LEASING

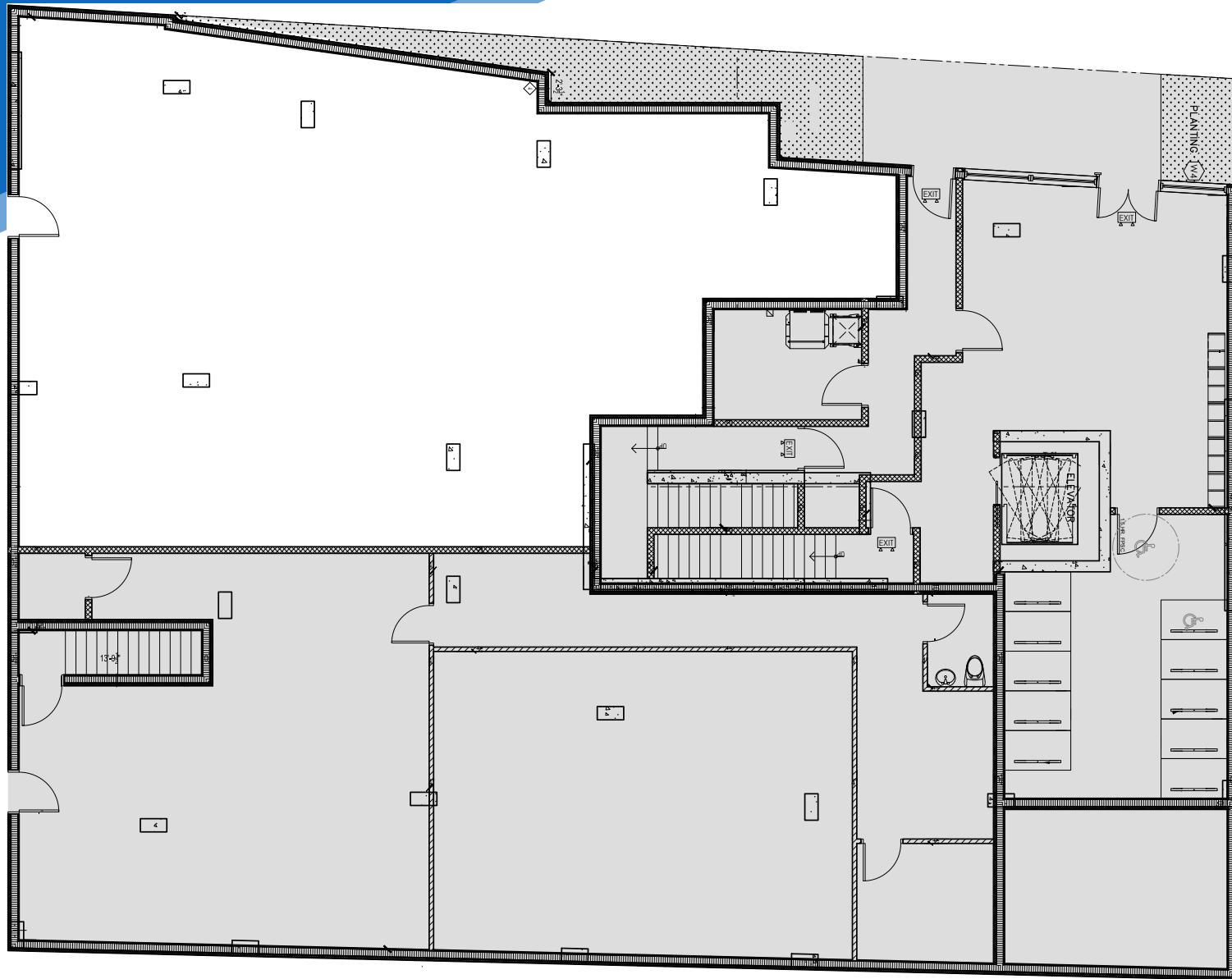
All information supplied is from sources deemed reliable and is furnished subject to errors, omissions, modifications, removal of the listing from sale or lease, and to any listing conditions, including the rates and manner of payment of commissions for particular offerings imposed by Meridian Capital Group. This information may include estimates and projections prepared by Meridian Capital Group with respect to future events, and these future events may or may not actually occur. Such estimates and projections reflect various assumptions concerning anticipated results. While Meridian Capital Group believes these assumptions are reasonable, there can be no assurance that any of these estimates and projections will be correct. Therefore, actual results may vary materially from these estimates and projections. Any square footage dimensions set forth are approximate.

172-O2 HILLSIDE AVENUE

JAMAICA, QUEENS | Corner of Hillside Avenue and 173rd Street

RETAIL FOR LEASE

FLOOR PLAN



NOAM AZIZ

Senior Director
212.468.5984
naziz@meridiancapital.com

MAX FREUDENBERGER

Senior Associate
212.468.5951
mfreudenberg@meridiancapital.com

BRADLEY BENILEVI

Associate
212.468.5967
bbenilevi@meridiancapital.com



MERIDIAN
RETAIL LEASING

All information supplied is from sources deemed reliable and is furnished subject to errors, omissions, modifications, removal of the listing from sale or lease, and to any listing conditions, including the rates and manner of payment of commissions for particular offerings imposed by Meridian Capital Group. This information may include estimates and projections prepared by Meridian Capital Group with respect to future events, and these future events may or may not actually occur. Such estimates and projections reflect various assumptions concerning anticipated results. While Meridian Capital Group believes these assumptions are reasonable, there can be no assurance that any of these estimates and projections will be correct. Therefore, actual results may vary materially from these estimates and projections. Any square footage dimensions set forth are approximate.

172-02 HILLSIDE AVENUE

JAMAICA, QUEENS | Corner of Hillside Avenue and 173rd Street

RETAIL FOR LEASE



NEIGHBORS

NOAM AZIZ
Senior Director
212.468.5984
naziz@meridiancapital.com

MAX FREUDENBERGER
Senior Associate
212.468.5951
mfreudenberg@meridiancapital.com

BRADLEY BENILEVI
Associate
212.468.5967
bbenilevi@meridiancapital.com



MERIDIAN
RETAIL LEASING

All information supplied is from sources deemed reliable and is furnished subject to errors, omissions, modifications, removal of the listing from sale or lease, and to any listing conditions, including the rates and manner of payment of commissions for particular offerings imposed by Meridian Capital Group. This information may include estimates and projections prepared by Meridian Capital Group with respect to future events, and these future events may or may not actually occur. Such estimates and projections reflect various assumptions concerning anticipated results. While Meridian Capital Group believes these assumptions are reasonable, there can be no assurance that any of these estimates and projections will be correct. Therefore, actual results may vary materially from these estimates and projections. Any square footage dimensions set forth are approximate.