

1714

AVENUE M MIDWOOD, BROOKLYN

Between East 17th & 18th Streets

RETAIL FOR LEASE

APPROXIMATE SIZE

Ground Floor: 935 SF + Basement
Backyard: 400 SF

ASKING RENT

\$4,900/Month

POSSESSION

Immediate

TERM

Negotiable

FRONTAGE

20 FT

COMMENTS

- Retail space available one-block from the Q
- Former nail salon with sinks and drainage system
- Surrounded by other neighborhood-friendly concepts
- Full basement and backyard exclusively for tenant

NEIGHBORS

Patis • Breadsmith of Brooklyn • Falafel Tanami • Pressers Bakery • Amazing Savings • Mountain Fruit Supermarket • The Yellow Door • Judaica Place • Edward R Murrow HS • Municipal parking • Rita's • Joseph's Dream Burger • KOMA Sushi • Dunkin' • Benny's Pizza • Chap a Nosh • Very Juice • Patis • 7-Eleven

TRANSPORTATION



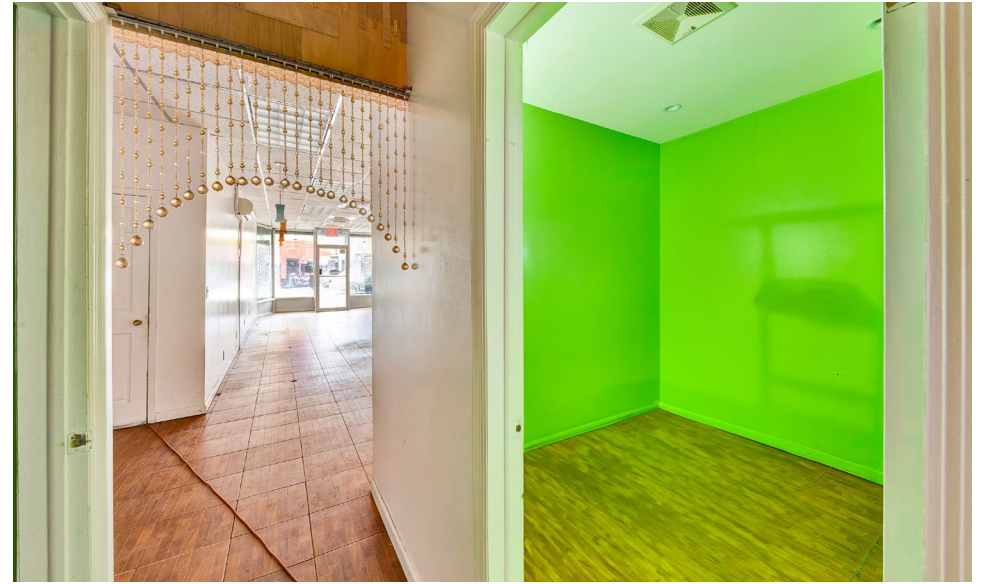
AARON HAROUNIAN

Associate
212.468.5957
aharounian@meridiancapital.com



MERIDIAN
RETAIL LEASING

All information supplied is from sources deemed reliable and is furnished subject to errors, omissions, modifications, removal of the listing from sale or lease, and to any listing conditions, including the rates and manner of payment of commissions for particular offerings imposed by Meridian Capital Group. This information may include estimates and projections prepared by Meridian Capital Group with respect to future events, and these future events may or may not actually occur. Such estimates and projections reflect various assumptions concerning anticipated results. While Meridian Capital Group believes these assumptions are reasonable, there can be no assurance that any of these estimates and projections will be correct. Therefore, actual results may vary materially from these estimates and projections. Any square footage dimensions set forth are approximate.



INTERIOR

AARON HAROUNIAN
Associate
212.468.5957
aharounian@meridiancapital.com

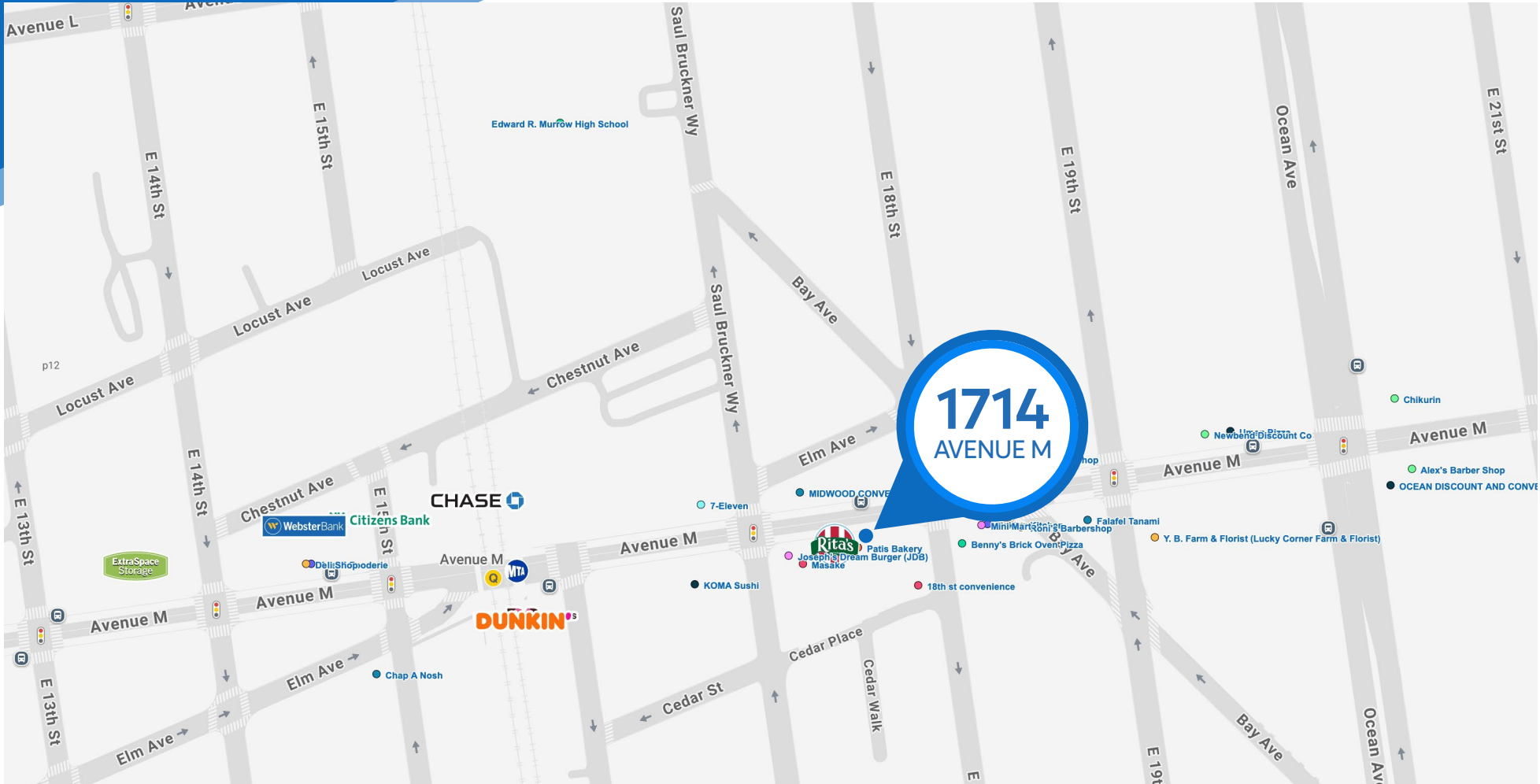


MERIDIAN
RETAIL LEASING

1714 AVENUE M

MIDWOOD, BROOKLYN | Between East 17th and 18th Streets

RETAIL FOR LEASE



NEIGHBORS

AARON HAROUNIAN

Associate
212.468.5957
aharounian@meridiancapital.com



MERIDIAN
RETAIL LEASING

All information supplied is from sources deemed reliable and is furnished subject to errors, omissions, modifications, removal of the listing from sale or lease, and to any listing conditions, including the rates and manner of payment of commissions for particular offerings imposed by Meridian Capital Group. This information may include estimates and projections prepared by Meridian Capital Group with respect to future events, and these future events may or may not actually occur. Such estimates and projections reflect various assumptions concerning anticipated results. While Meridian Capital Group believes these assumptions are reasonable, there can be no assurance that any of these estimates and projections will be correct. Therefore, actual results may vary materially from these estimates and projections. Any square footage dimensions set forth are approximate.