

165

ALLEN STREET LOWER EAST SIDE, NYC

Between Stanton & Rivington Streets

RETAIL FOR LEASE

APPROXIMATE SIZE

Ground Floor: 2,000 SF
Second Floor: 2,000 SF
Basement: 2,000 SF

ASKING RENT

\$28,995/Month

POSSESSION

Immediate

TERM

Negotiable

FRONTAGE

25 FT

COMMENTS

- Full building leasing opportunity
- Hood in place
- Unique build-out perfect for F&B use, bar, entertainment or gallery
- Excellent visibility and heavy foot traffic

NEIGHBORS

Fools Gold • Pizza Loves Sauce • Rumpus Room
• Bar Goto • Russ + Daughters • Clawdaddy
• Kinky's • 82 Stanton • 7th Street Burger •
Equinox • Katz's Delicatessen • Marshall's

TRANSPORTATION



ELLIOT WYGODA

Director
212.468.5968
ewygoda@meridiancapital.com

NICK HANNA

Associate
212.468.5920
nhanna@meridiancapital.com



MERIDIAN
RETAIL LEASING

All information supplied is from sources deemed reliable and is furnished subject to errors, omissions, modifications, removal of the listing from sale or lease, and to any listing conditions, including the rates and manner of payment of commissions for particular offerings imposed by Meridian Capital Group. This information may include estimates and projections prepared by Meridian Capital Group with respect to future events, and these future events may or may not actually occur. Such estimates and projections reflect various assumptions concerning anticipated results. While Meridian Capital Group believes these assumptions are reasonable, there can be no assurance that any of these estimates and projections will be correct. Therefore, actual results may vary materially from these estimates and projections. Any square footage dimensions set forth are approximate.

165 ALLEN STREET

LOWER EAST SIDE, NYC | Between Stanton and Rivington Streets

RETAIL FOR LEASE



INTERIOR | GROUND FLOOR

ELLIOT WYGODA
Director
212.468.5968
ewygoda@meridiancapital.com

NICK HANNA
Associate
212.468.5920
nhanna@meridiancapital.com



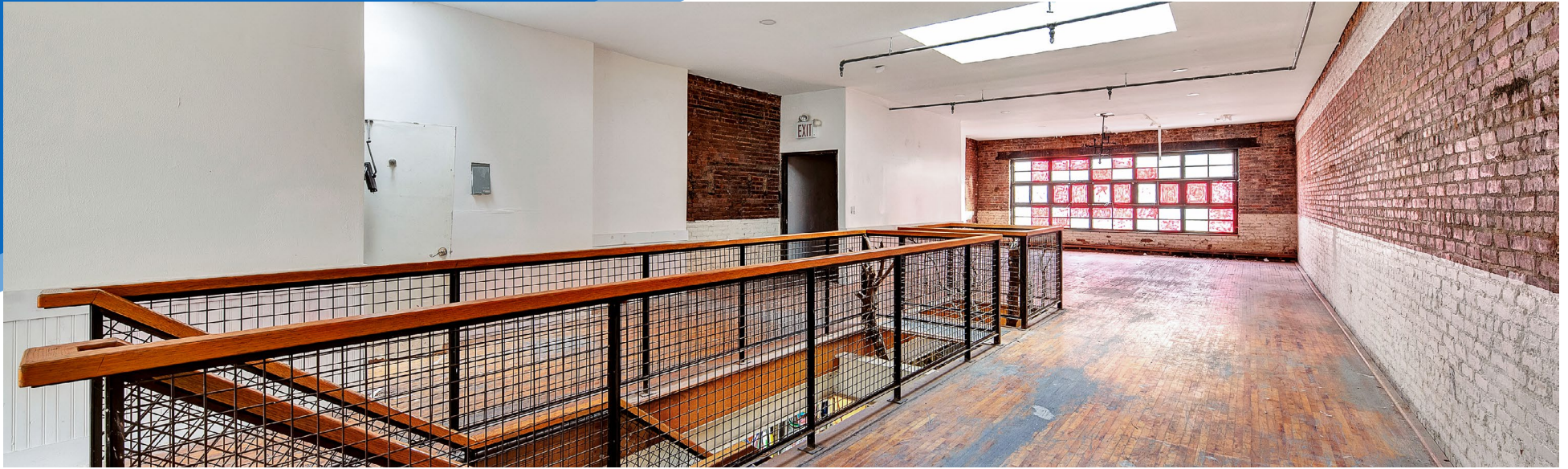
MERIDIAN
RETAIL LEASING

All information supplied is from sources deemed reliable and is furnished subject to errors, omissions, modifications, removal of the listing from sale or lease, and to any listing conditions, including the rates and manner of payment of commissions for particular offerings imposed by Meridian Capital Group. This information may include estimates and projections prepared by Meridian Capital Group with respect to future events, and these future events may or may not actually occur. Such estimates and projections reflect various assumptions concerning anticipated results. While Meridian Capital Group believes these assumptions are reasonable, there can be no assurance that any of these estimates and projections will be correct. Therefore, actual results may vary materially from these estimates and projections. Any square footage dimensions set forth are approximate.

165 ALLEN STREET

LOWER EAST SIDE, NYC | Between Stanton and Rivington Streets

RETAIL FOR LEASE



INTERIOR | SECOND FLOOR



ELLIOT WYGODA

Director
212.468.5968
ewygoda@meridiancapital.com

NICK HANNA

Associate
212.468.5920
nhanna@meridiancapital.com



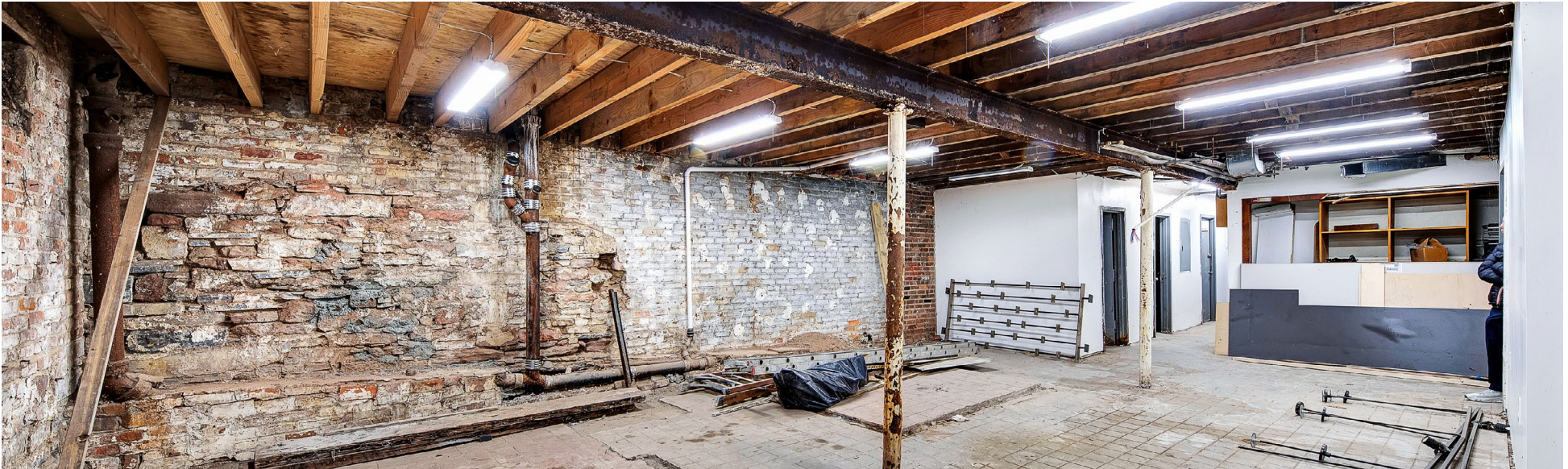
MERIDIAN
RETAIL LEASING

All information supplied is from sources deemed reliable and is furnished subject to errors, omissions, modifications, removal of the listing from sale or lease, and to any listing conditions, including the rates and manner of payment of commissions for particular offerings imposed by Meridian Capital Group. This information may include estimates and projections prepared by Meridian Capital Group with respect to future events, and these future events may or may not actually occur. Such estimates and projections reflect various assumptions concerning anticipated results. While Meridian Capital Group believes these assumptions are reasonable, there can be no assurance that any of these estimates and projections will be correct. Therefore, actual results may vary materially from these estimates and projections. Any square footage dimensions set forth are approximate.

165 ALLEN STREET

LOWER EAST SIDE, NYC | Between Stanton and Rivington Streets

RETAIL FOR LEASE



INTERIOR | BASEMENT

ELLIOT WYGODA

Director
212.468.5968
ewygoda@meridiancapital.com

NICK HANNA

Associate
212.468.5920
nhanna@meridiancapital.com



MERIDIAN
RETAIL LEASING

All information supplied is from sources deemed reliable and is furnished subject to errors, omissions, modifications, removal of the listing from sale or lease, and to any listing conditions, including the rates and manner of payment of commissions for particular offerings imposed by Meridian Capital Group. This information may include estimates and projections prepared by Meridian Capital Group with respect to future events, and these future events may or may not actually occur. Such estimates and projections reflect various assumptions concerning anticipated results. While Meridian Capital Group believes these assumptions are reasonable, there can be no assurance that any of these estimates and projections will be correct. Therefore, actual results may vary materially from these estimates and projections. Any square footage dimensions set forth are approximate.

165 ALLEN STREET

LOWER EAST SIDE, NYC | Between Stanton and Rivington Streets

RETAIL FOR LEASE



NEIGHBORS

ELLIOT WYGODA
 Director
 212.468.5968
 ewygoda@meridiancapital.com

NICK HANNA
 Associate
 212.468.5920
 nhanna@meridiancapital.com



MERIDIAN
 RETAIL LEASING

All information supplied is from sources deemed reliable and is furnished subject to errors, omissions, modifications, removal of the listing from sale or lease, and to any listing conditions, including the rates and manner of payment of commissions for particular offerings imposed by Meridian Capital Group. This information may include estimates and projections prepared by Meridian Capital Group with respect to future events, and these future events may or may not actually occur. Such estimates and projections reflect various assumptions concerning anticipated results. While Meridian Capital Group believes these assumptions are reasonable, there can be no assurance that any of these estimates and projections will be correct. Therefore, actual results may vary materially from these estimates and projections. Any square footage dimensions set forth are approximate.