

# 115-55

## SUTPHIN BOULEVARD

### JAMAICA, QUEENS

Corner of Sutphin Boulevard & 115<sup>th</sup> Drive

RETAIL FOR LEASE



PROPERTY INFORMATION

#### APPROXIMATE SIZE

2,550 SF

#### ASKING RENT

\$11,500/Month

#### POSSESSION

Immediate

#### TERM

Negotiable

#### FRONTAGE

100 FT Wraparound

#### COMMENTS

- Former "Dollar Tree" storage area
- Corner retail space with great wraparound visibility
- Parking lot available on-site
- Space for sublease next to a brand-new laundromat being constructed

#### NEIGHBORS

Akasha Restaurant & Bar • NYC Laundry City Express • Dunkin' • C Town Supermarkets • Little Caesars • McDonald's • Classy Touch Nail Salon

#### TRANSPORTATION



#### NOAM AZIZ

Senior Director  
212.468.5984  
naziz@meridiancapital.com

#### MAX FREUDENBERGER

Senior Associate  
212.468.5951  
mfreudenberg@meridiancapital.com

#### AARON HAROUNIAN

Associate  
212.468.5957  
aharounian@meridiancapital.com



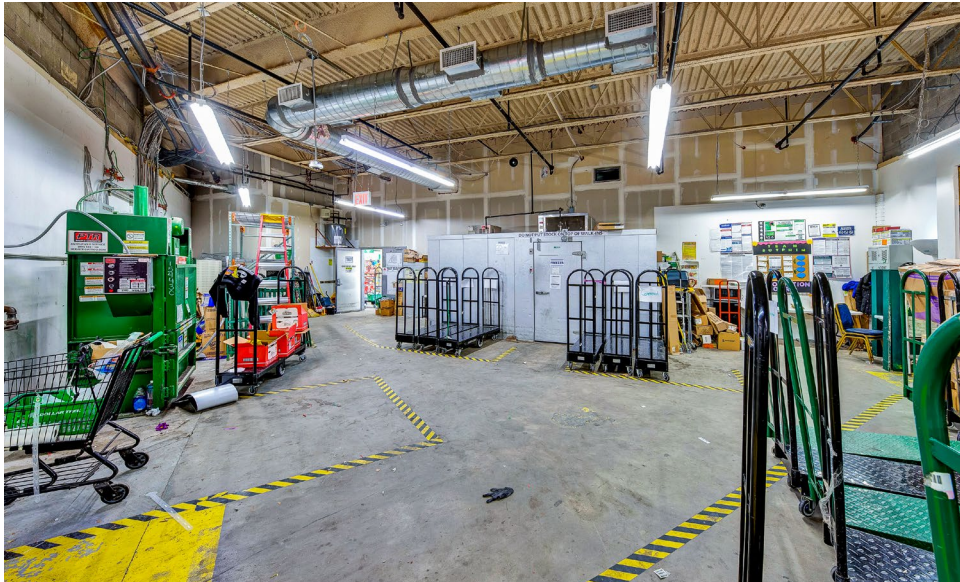
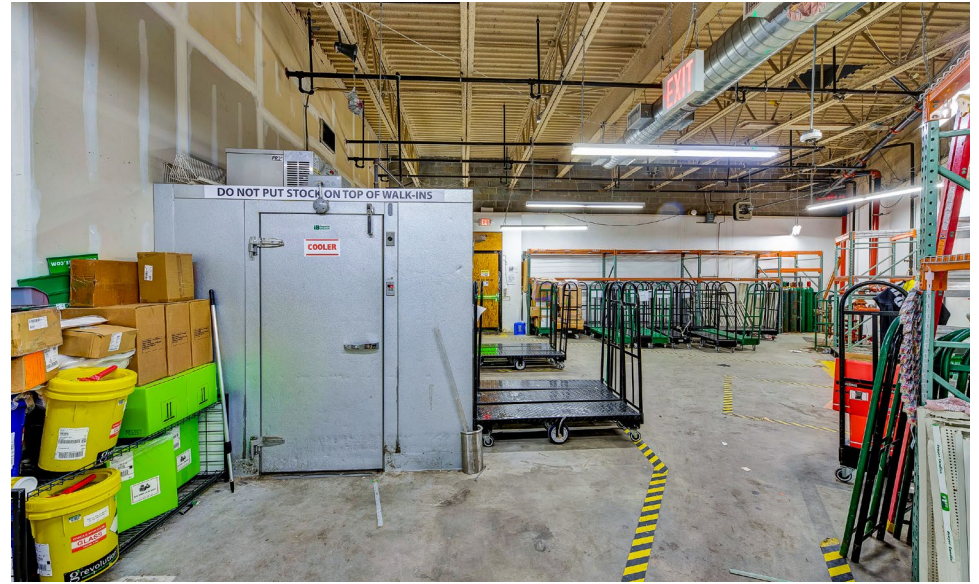
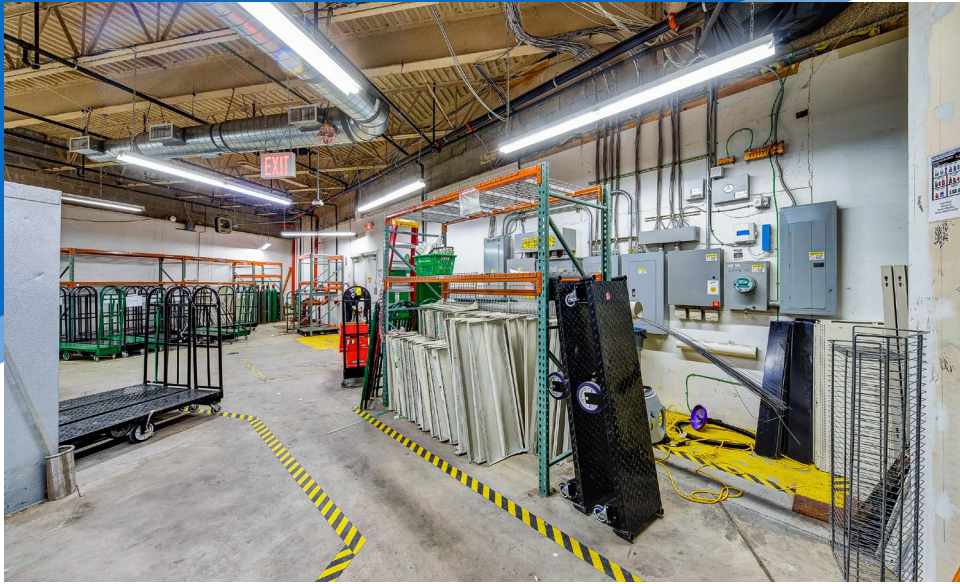
**MERIDIAN**  
RETAIL LEASING

All information supplied is from sources deemed reliable and is furnished subject to errors, omissions, modifications, removal of the listing from sale or lease, and to any listing conditions, including the rates and manner of payment of commissions for particular offerings imposed by Meridian Capital Group. This information may include estimates and projections prepared by Meridian Capital Group with respect to future events, and these future events may or may not actually occur. Such estimates and projections reflect various assumptions concerning anticipated results. While Meridian Capital Group believes these assumptions are reasonable, there can be no assurance that any of these estimates and projections will be correct. Therefore, actual results may vary materially from these estimates and projections. Any square footage dimensions set forth are approximate.

# 115-55 SUTPHIN BOULEVARD

JAMAICA, QUEENS | Corner of Sutphin Boulevard and 115<sup>th</sup> Drive

RETAIL FOR LEASE



INTERIOR

**NOAM AZIZ**  
Senior Director  
212.468.5984  
naziz@meridiancapital.com

**MAX FREUDENBERGER**  
Senior Associate  
212.468.5951  
mfreudenberger@meridiancapital.com

**AARON HAROUNIAN**  
Associate  
212.468.5957  
aharounian@meridiancapital.com



**MERIDIAN**  
RETAIL LEASING

All information supplied is from sources deemed reliable and is furnished subject to errors, omissions, modifications, removal of the listing from sale or lease, and to any listing conditions, including the rates and manner of payment of commissions for particular offerings imposed by Meridian Capital Group. This information may include estimates and projections prepared by Meridian Capital Group with respect to future events, and these future events may or may not actually occur. Such estimates and projections reflect various assumptions concerning anticipated results. While Meridian Capital Group believes these assumptions are reasonable, there can be no assurance that any of these estimates and projections will be correct. Therefore, actual results may vary materially from these estimates and projections. Any square footage dimensions set forth are approximate.

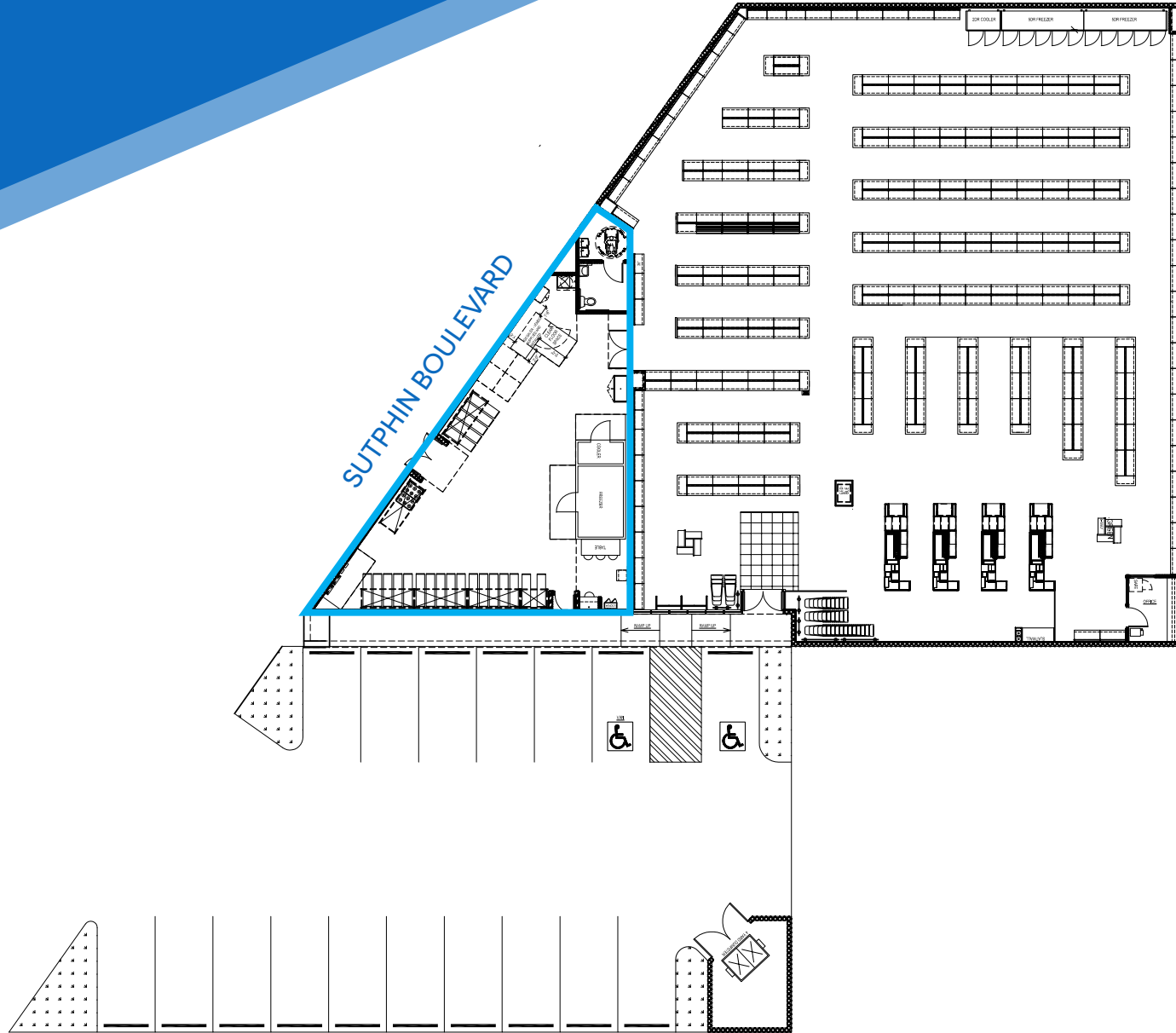
# 115-55 SUTPHIN BOULEVARD

JAMAICA, QUEENS | Corner of Sutphin Boulevard and 115<sup>th</sup> Drive

RETAIL FOR LEASE

115<sup>TH</sup> DRIVE

FLOOR PLAN



## NOAM AZIZ

Senior Director  
212.468.5984  
naziz@meridiancapital.com

## MAX FREUDENBERGER

Senior Associate  
212.468.5951  
mfreudenberger@meridiancapital.com

## AARON HAROUNIAN

Associate  
212.468.5957  
aharounian@meridiancapital.com



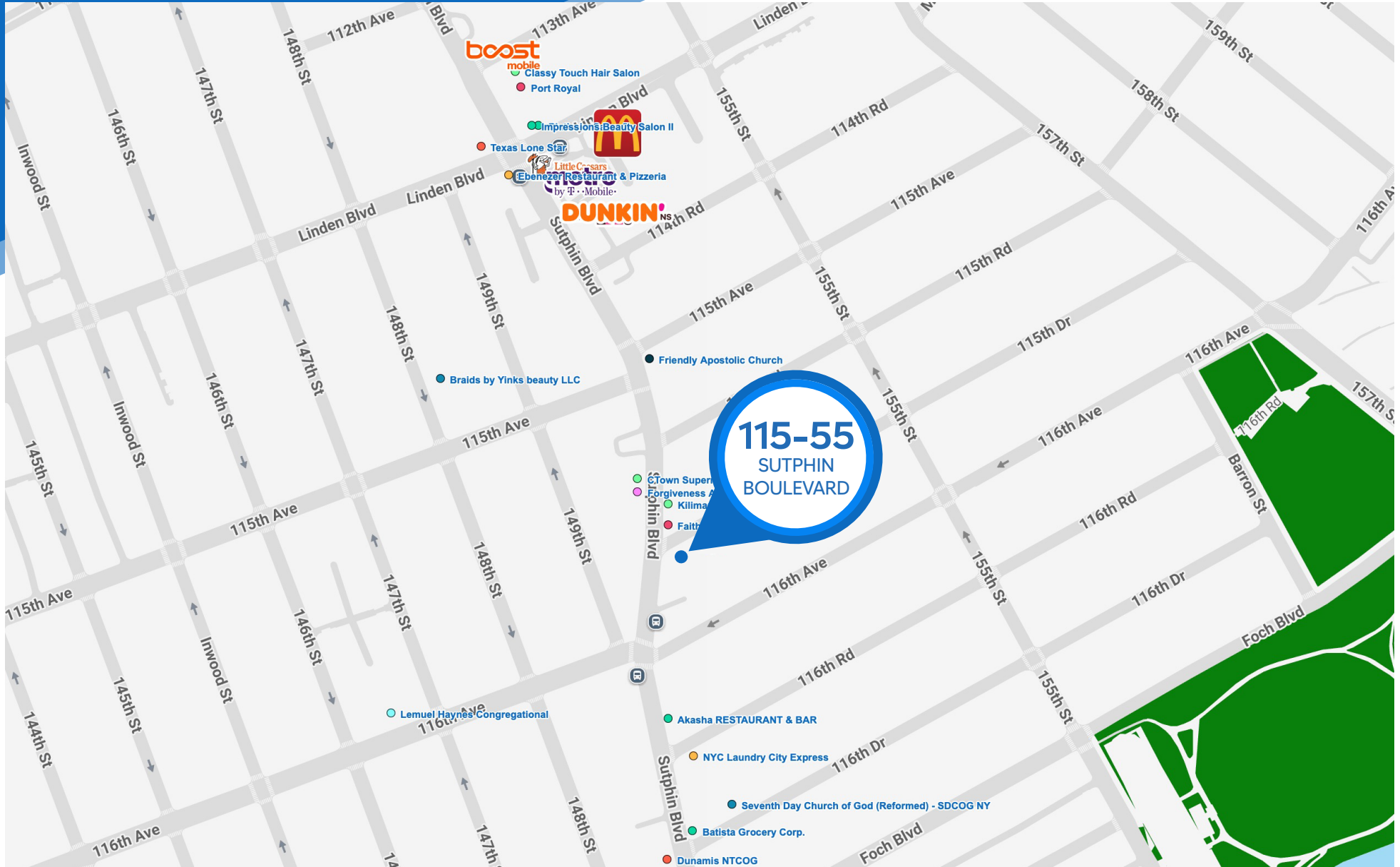
**MERIDIAN**  
RETAIL LEASING

All information supplied is from sources deemed reliable and is furnished subject to errors, omissions, modifications, removal of the listing from sale or lease, and to any listing conditions, including the rates and manner of payment of commissions for particular offerings imposed by Meridian Capital Group. This information may include estimates and projections prepared by Meridian Capital Group with respect to future events, and these future events may or may not actually occur. Such estimates and projections reflect various assumptions concerning anticipated results. While Meridian Capital Group believes these assumptions are reasonable, there can be no assurance that any of these estimates and projections will be correct. Therefore, actual results may vary materially from these estimates and projections. Any square footage dimensions set forth are approximate.

# 115-55 SUTPHIN BOULEVARD

JAMAICA, QUEENS | Corner of Sutphin Boulevard and 115<sup>th</sup> Drive

RETAIL FOR LEASE



FLOOR PLAN

## NOAM AZIZ

Senior Director  
212.468.5984  
naziz@meridiancapital.com

## MAX FREUDENBERGER

Senior Associate  
212.468.5951  
mfreudenberg@meridiancapital.com

## AARON HAROUNIAN

Associate  
212.468.5957  
aharounian@meridiancapital.com



**MERIDIAN**  
RETAIL LEASING

All information supplied is from sources deemed reliable and is furnished subject to errors, omissions, modifications, removal of the listing from sale or lease, and to any listing conditions, including the rates and manner of payment of commissions for particular offerings imposed by Meridian Capital Group. This information may include estimates and projections prepared by Meridian Capital Group with respect to future events, and these future events may or may not actually occur. Such estimates and projections reflect various assumptions concerning anticipated results. While Meridian Capital Group believes these assumptions are reasonable, there can be no assurance that any of these estimates and projections will be correct. Therefore, actual results may vary materially from these estimates and projections. Any square footage dimensions set forth are approximate.