

POOD

400

WEST 42ND STREET  
TIMES SQUARE

 MERIDIAN  
RETAIL LEASING

# 400

## WEST 42<sup>ND</sup> STREET TIMES SQUARE, NYC

Corner of West 42<sup>nd</sup> Street & Ninth Avenue

RETAIL FOR LEASE

### APPROXIMATE SIZE

#### Space A:

Ground Floor: 1,800 SF  
2<sup>nd</sup> Floor: 12,500 SF

#### Space B:

Ground Floor: 3,500 SF + Storage Basement

### ASKING RENT

Space A: \$60 PSF  
Space B: \$25,000/Month

### POSSESSION

Immediate

### TERM

Negotiable

### FRONTAGE

30 FT

### COMMENTS

- Unique retail space available in the heart of Times Square
- Soaring 25' ceilings
- Located beneath the Pod Times Square Hotel with 665-Keys + 45 residential units
- Ideal for entertainment, fitness, hospitality, flagship retail uses
- Ownership will provide ample free time/TI for qualified tenants
- **Space B can be combined with Space A 2<sup>nd</sup> floor**

### NEIGHBORS

Port Authority • Ra Sushi • Benihana • Coldstone Creamery • Hilton • Mattress Firm • Raising Cane's • Hard Rock Café • Champs Sports • H&M • Capizzi • Rudy's Bar & Grill • Chez Schmacky's

### TRANSPORTATION

1 2 3 N Q R W A C E

#### NOAM AZIZ

Senior Director  
212.468.5984  
naziz@meridiancapital.com

#### CARSON SHAHRABANI

Senior Associate  
212.468.5927  
cshahrabani@meridiancapital.com

#### MAX FREUDENBERGER

Senior Associate  
212.468.5951  
mfreudenberg@meridiancapital.com

#### JUSTIN BUSTAMANTE

Associate  
212.468.5917  
jbustamante@meridiancapital.com



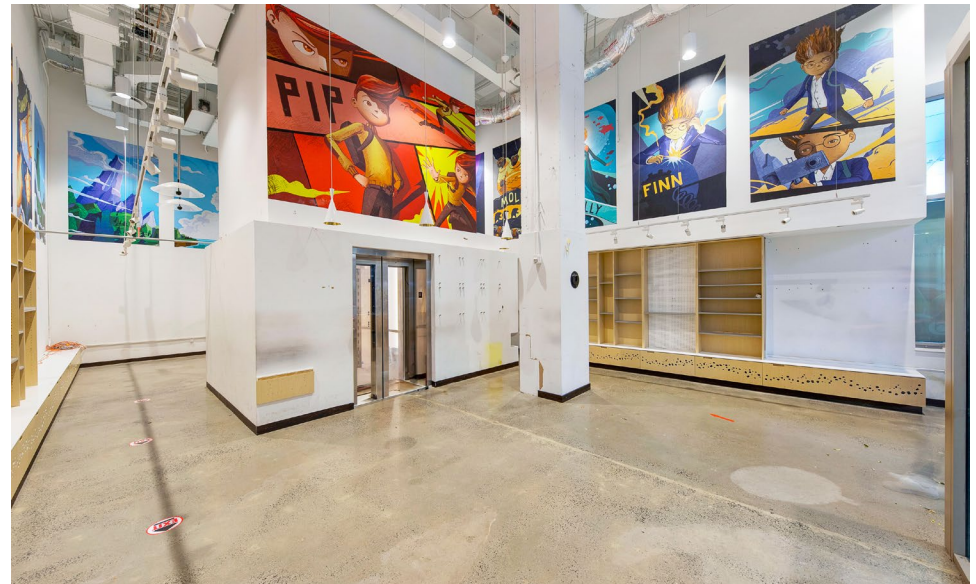
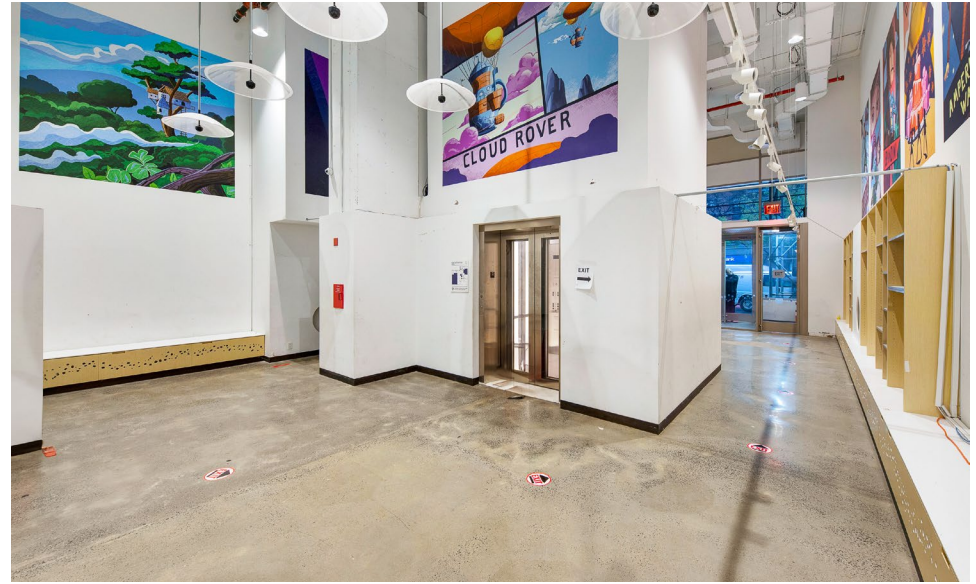
PROPERTY INFORMATION

All information supplied is from sources deemed reliable and is furnished subject to errors, omissions, modifications, removal of the listing from sale or lease, and to any listing conditions, including the rates and manner of payment of commissions for particular offerings imposed by Meridian Capital Group. This information may include estimates and projections prepared by Meridian Capital Group with respect to future events, and these future events may or may not actually occur. Such estimates and projections reflect various assumptions concerning anticipated results. While Meridian Capital Group believes these assumptions are reasonable, there can be no assurance that any of these estimates and projections will be correct. Therefore, actual results may vary materially from these estimates and projections. Any square footage dimensions set forth are approximate.

# 400 WEST 42<sup>ND</sup> STREET

TIMES SQUARE, NYC | Corner of West 42<sup>nd</sup> Street and Ninth Avenue

RETAIL FOR LEASE



SPACE A | GROUND FLOOR

**NOAM AZIZ**  
Senior Director  
212.468.5984  
naziz@meridiancapital.com

**CARSON SHAHRABANI**  
Senior Associate  
212.468.5927  
cshahrabani@meridiancapital.com

**MAX FREUDENBERGER**  
Senior Associate  
212.468.5951  
mfreudenberg@meridiancapital.com

**JUSTIN BUSTAMANTE**  
Associate  
212.468.5917  
jbustamante@meridiancapital.com

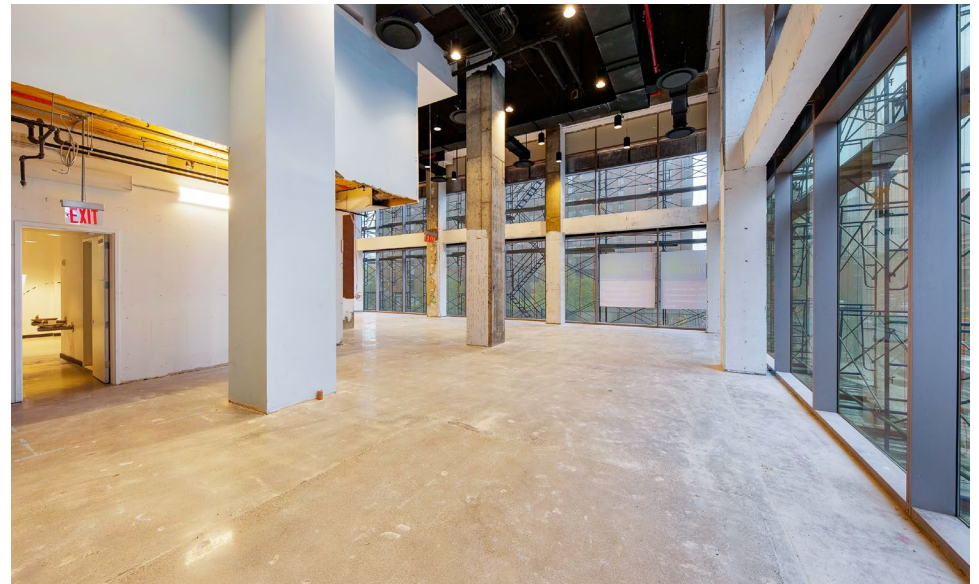
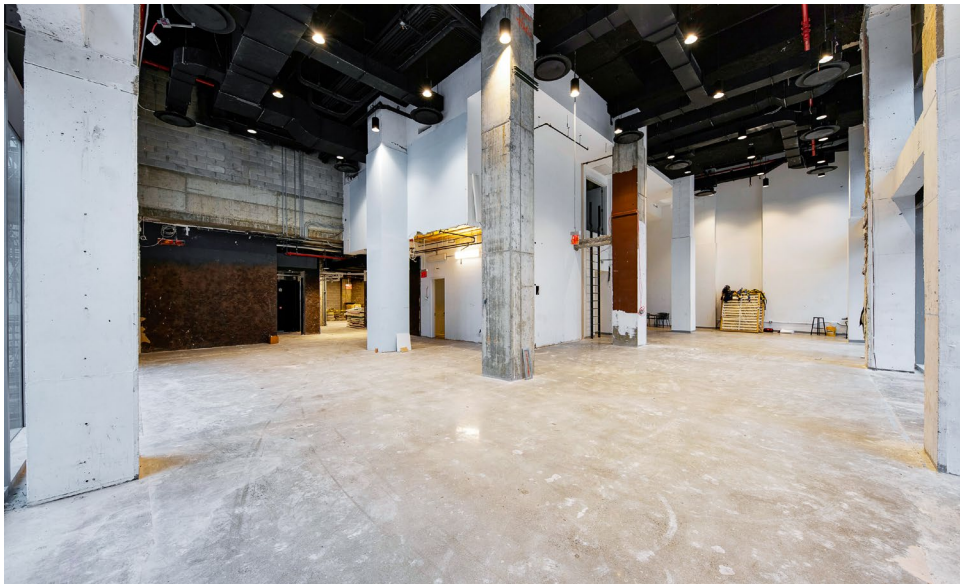
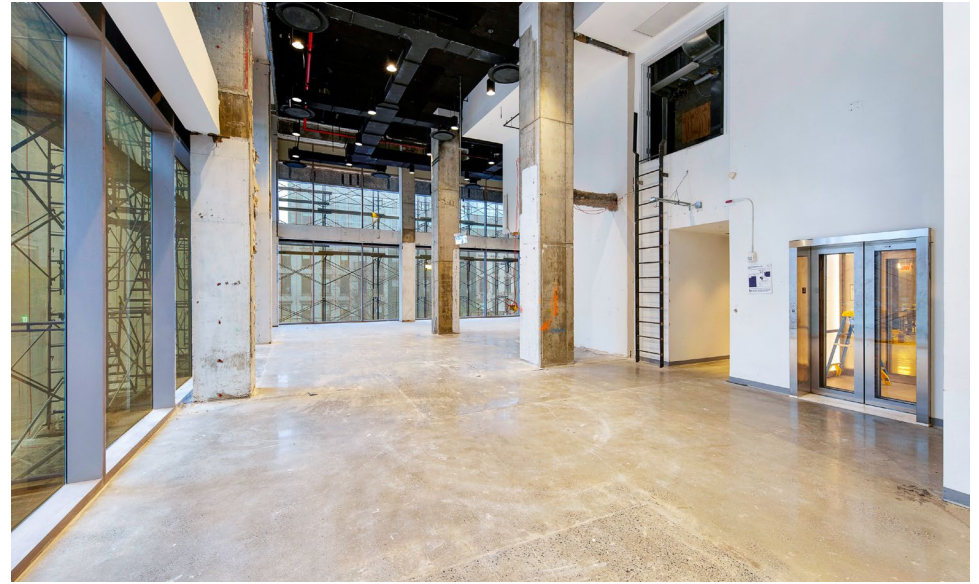
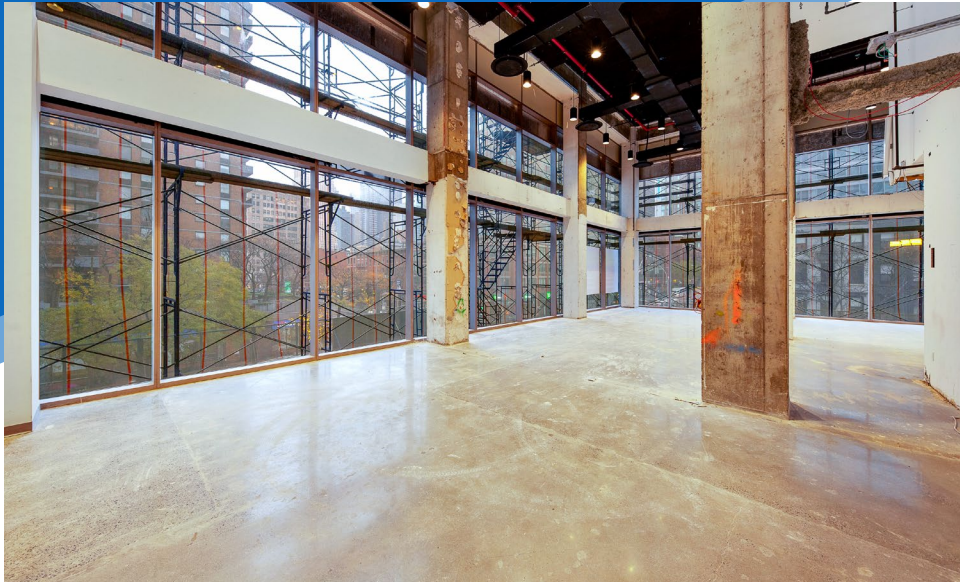


All information supplied is from sources deemed reliable and is furnished subject to errors, omissions, modifications, removal of the listing from sale or lease, and to any listing conditions, including the rates and manner of payment of commissions for particular offerings imposed by Meridian Capital Group. This information may include estimates and projections prepared by Meridian Capital Group with respect to future events, and these future events may or may not actually occur. Such estimates and projections reflect various assumptions concerning anticipated results. While Meridian Capital Group believes these assumptions are reasonable, there can be no assurance that any of these estimates and projections will be correct. Therefore, actual results may vary materially from these estimates and projections. Any square footage dimensions set forth are approximate.

# 400 WEST 42<sup>ND</sup> STREET

TIMES SQUARE, NYC | Corner of West 42<sup>nd</sup> Street and Ninth Avenue

RETAIL FOR LEASE



SPACE A | SECOND FLOOR

**NOAM AZIZ**  
Senior Director  
212.468.5984  
naziz@meridiancapital.com

**CARSON SHAHRABANI**  
Senior Associate  
212.468.5927  
cshahrabani@meridiancapital.com

**MAX FREUDENBERGER**  
Senior Associate  
212.468.5951  
mfreudenberg@meridiancapital.com

**JUSTIN BUSTAMANTE**  
Associate  
212.468.5917  
jbustamante@meridiancapital.com

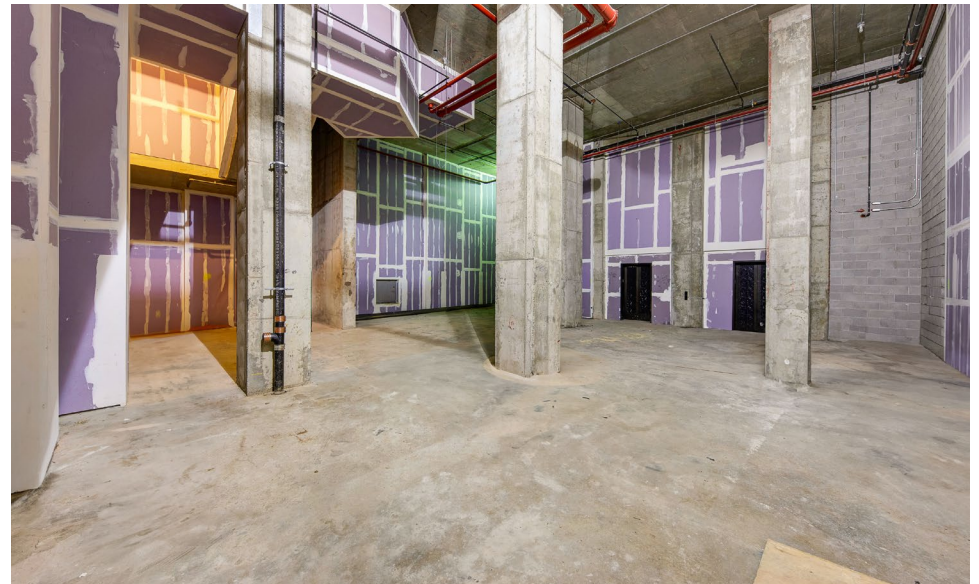
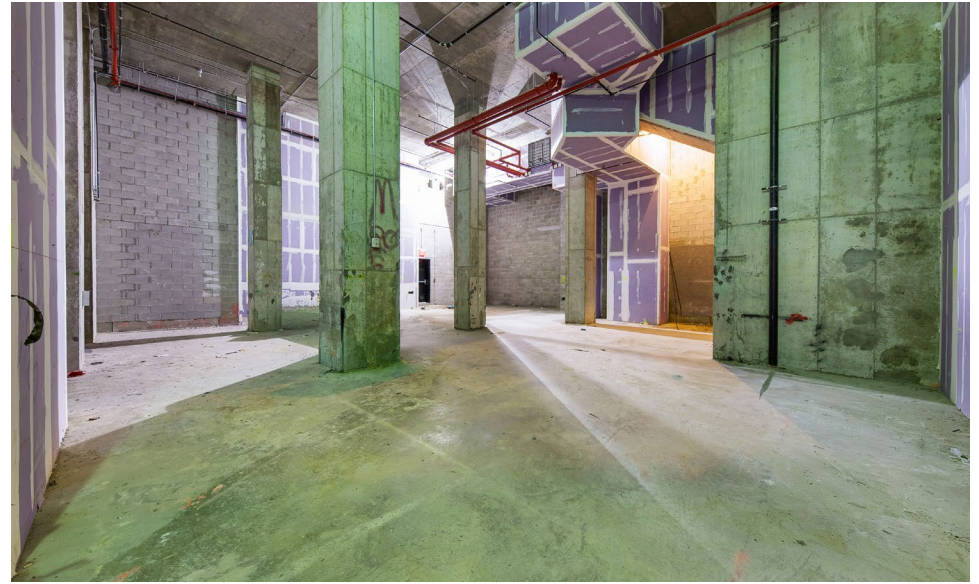


All information supplied is from sources deemed reliable and is furnished subject to errors, omissions, modifications, removal of the listing from sale or lease, and to any listing conditions, including the rates and manner of payment of commissions for particular offerings imposed by Meridian Capital Group. This information may include estimates and projections prepared by Meridian Capital Group with respect to future events, and these future events may or may not actually occur. Such estimates and projections reflect various assumptions concerning anticipated results. While Meridian Capital Group believes these assumptions are reasonable, there can be no assurance that any of these estimates and projections will be correct. Therefore, actual results may vary materially from these estimates and projections. Any square footage dimensions set forth are approximate.

# 400 WEST 42<sup>ND</sup> STREET

TIMES SQUARE, NYC | Corner of West 42<sup>nd</sup> Street and Ninth Avenue

RETAIL FOR LEASE



INTERIOR | SPACE B

**NOAM AZIZ**  
Senior Director  
212.468.5984  
naziz@meridiancapital.com

**CARSON SHAHRABANI**  
Senior Associate  
212.468.5927  
cshahrabani@meridiancapital.com

**MAX FREUDENBERGER**  
Senior Associate  
212.468.5951  
mfreudenberg@meridiancapital.com

**JUSTIN BUSTAMANTE**  
Associate  
212.468.5917  
jbustamante@meridiancapital.com



All information supplied is from sources deemed reliable and is furnished subject to errors, omissions, modifications, removal of the listing from sale or lease, and to any listing conditions, including the rates and manner of payment of commissions for particular offerings imposed by Meridian Capital Group. This information may include estimates and projections prepared by Meridian Capital Group with respect to future events, and these future events may or may not actually occur. Such estimates and projections reflect various assumptions concerning anticipated results. While Meridian Capital Group believes these assumptions are reasonable, there can be no assurance that any of these estimates and projections will be correct. Therefore, actual results may vary materially from these estimates and projections. Any square footage dimensions set forth are approximate.

# 400 WEST 42<sup>ND</sup> STREET

TIMES SQUARE, NYC | Corner of West 42<sup>nd</sup> Street and Ninth Avenue

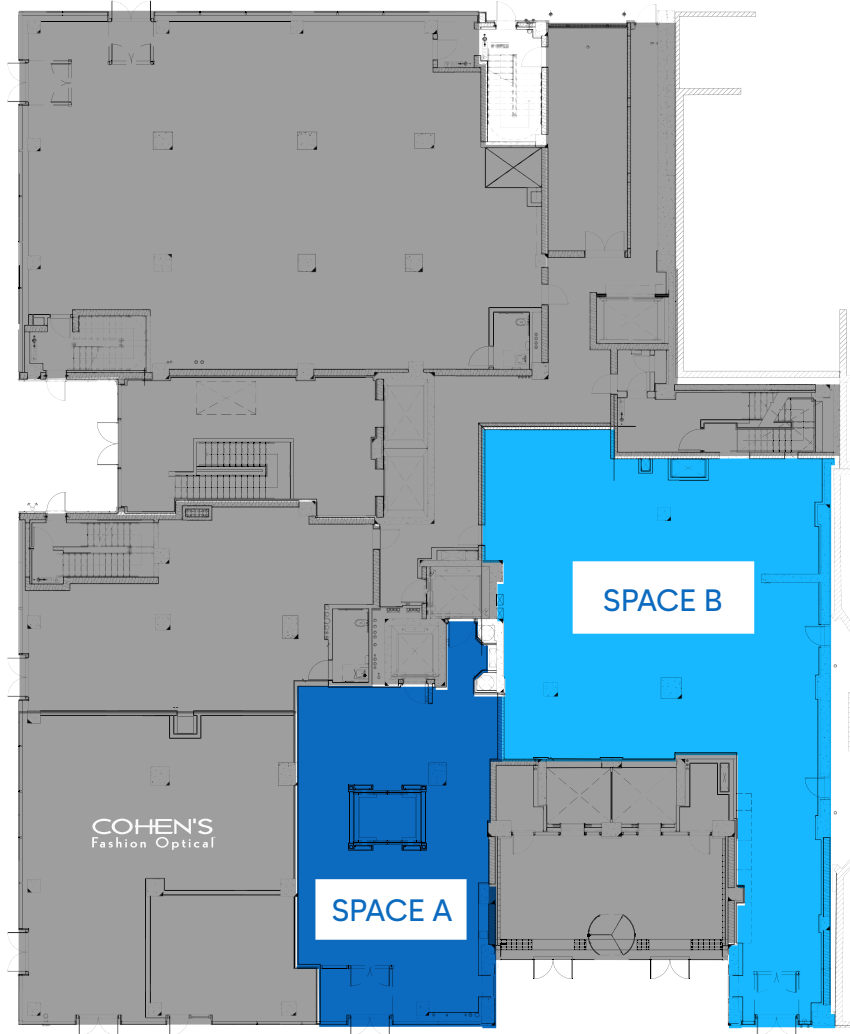
RETAIL FOR LEASE

## GROUND FLOOR

## SECOND FLOOR

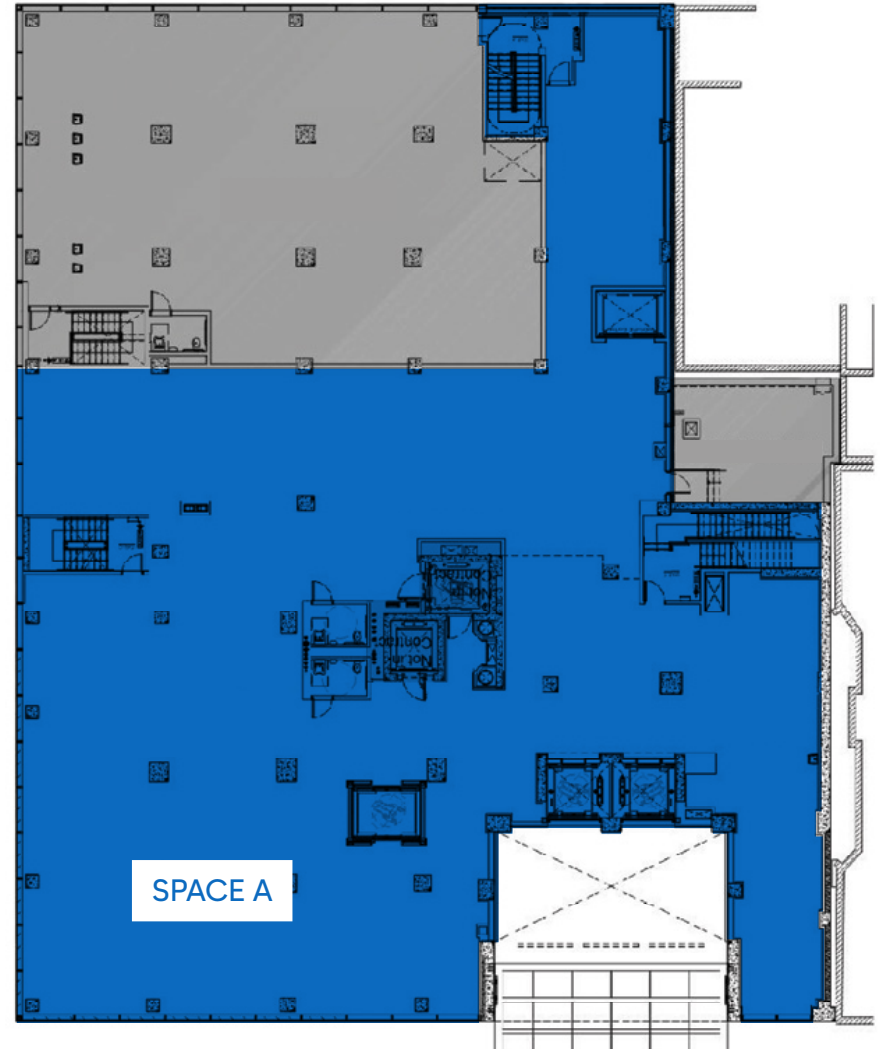
FLOOR PLAN

NINTH AVENUE



WEST 42ND STREET

NINTH AVENUE



WEST 42ND STREET

**NOAM AZIZ**  
Senior Director  
212.468.5984  
naziz@meridiancapital.com

**CARSON SHAHRABANI**  
Senior Associate  
212.468.5927  
cshahrabani@meridiancapital.com

**MAX FREUDENBERGER**  
Senior Associate  
212.468.5951  
mfreudenberg@meridiancapital.com

**JUSTIN BUSTAMANTE**  
Associate  
212.468.5917  
jbustamante@meridiancapital.com



All information supplied is from sources deemed reliable and is furnished subject to errors, omissions, modifications, removal of the listing from sale or lease, and to any listing conditions, including the rates and manner of payment of commissions for particular offerings imposed by Meridian Capital Group. This information may include estimates and projections prepared by Meridian Capital Group with respect to future events, and these future events may or may not actually occur. Such estimates and projections reflect various assumptions concerning anticipated results. While Meridian Capital Group believes these assumptions are reasonable, there can be no assurance that any of these estimates and projections will be correct. Therefore, actual results may vary materially from these estimates and projections. Any square footage dimensions set forth are approximate.

# 400 WEST 42<sup>ND</sup> STREET

TIMES SQUARE, NYC | Corner of West 42<sup>nd</sup> Street and Ninth Avenue

RETAIL FOR LEASE



NEIGHBORS

**NOAM AZIZ**  
Senior Director  
212.468.5984  
naziz@meridiancapital.com

**CARSON SHAHRABANI**  
Senior Associate  
212.468.5927  
cshahrabani@meridiancapital.com

**MAX FREUDENBERGER**  
Senior Associate  
212.468.5951  
mfreudenberg@meridiancapital.com

**JUSTIN BUSTAMANTE**  
Associate  
212.468.5917  
jbustamante@meridiancapital.com



All information supplied is from sources deemed reliable and is furnished subject to errors, omissions, modifications, removal of the listing from sale or lease, and to any listing conditions, including the rates and manner of payment of commissions for particular offerings imposed by Meridian Capital Group. This information may include estimates and projections prepared by Meridian Capital Group with respect to future events, and these future events may or may not actually occur. Such estimates and projections reflect various assumptions concerning anticipated results. While Meridian Capital Group believes these assumptions are reasonable, there can be no assurance that any of these estimates and projections will be correct. Therefore, actual results may vary materially from these estimates and projections. Any square footage dimensions set forth are approximate.