

# 3250

## WESTCHESTER AVENUE

PELHAM BAY, BRONX

Between Continental Avenue & Amendola Place

OFFICE FOR LEASE



### APPROXIMATE SIZE

Suite #124: 500 SF

### ASKING RENT

~~\$2,250/Month~~ Reduced  
\$2,000/Month

### POSSESSION

Immediate

### TERM

Negotiable

### FRONTAGE

10 FT

### COMMENTS

- Open layout
- Perfect for office and medical uses
- Landlord will offer TI for qualified operators
- Close proximity to the 6 train

### NEIGHBORS

Bristol Care Pharmacy • The Bronx Eye Center •  
Dunkin' • Subway • Burger King • Kennedy Chicken  
• Benjamin Moore • Confetti Party Place

### TRANSPORTATION

6

PROPERTY INFORMATION

### NOAM AZIZ

Senior Director  
212.468.5984  
naziz@meridiancapital.com

### DANIEL ZACAİM

Associate  
212.468.5910  
dzacaim@meridiancapital.com

### JASON BERISHA

Associate  
212.468.5955  
jberisha@meridiancapital.com



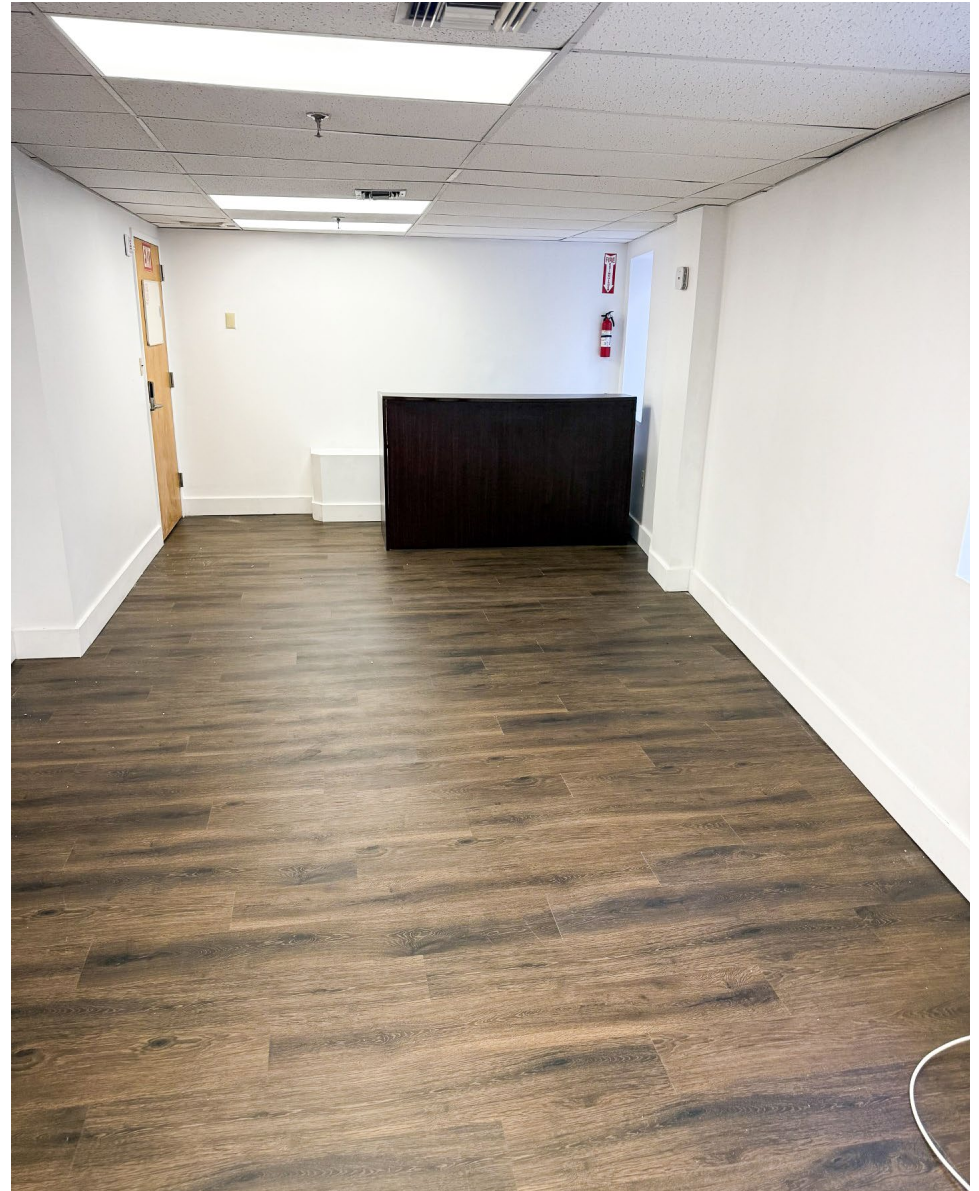
**MERIDIAN**  
RETAIL LEASING

All information supplied is from sources deemed reliable and is furnished subject to errors, omissions, modifications, removal of the listing from sale or lease, and to any listing conditions, including the rates and manner of payment of commissions for particular offerings imposed by Meridian Capital Group. This information may include estimates and projections prepared by Meridian Capital Group with respect to future events, and these future events may or may not actually occur. Such estimates and projections reflect various assumptions concerning anticipated results. While Meridian Capital Group believes these assumptions are reasonable, there can be no assurance that any of these estimates and projections will be correct. Therefore, actual results may vary materially from these estimates and projections. Any square footage dimensions set forth are approximate.

# 3250 WESTCHESTER AVENUE

PELHAM BAY, BRONX | Between Continental Avenue and Amendola Place

OFFICE FOR LEASE



INTERIOR

**NOAM AZIZ**  
Senior Director  
212.468.5984  
naziz@meridiancapital.com

**DANIEL ZACAİM**  
Associate  
212.468.5910  
dzacaim@meridiancapital.com

**JASON BERISHA**  
Associate  
212.468.5955  
jberisha@meridiancapital.com



**MERIDIAN**  
RETAIL LEASING

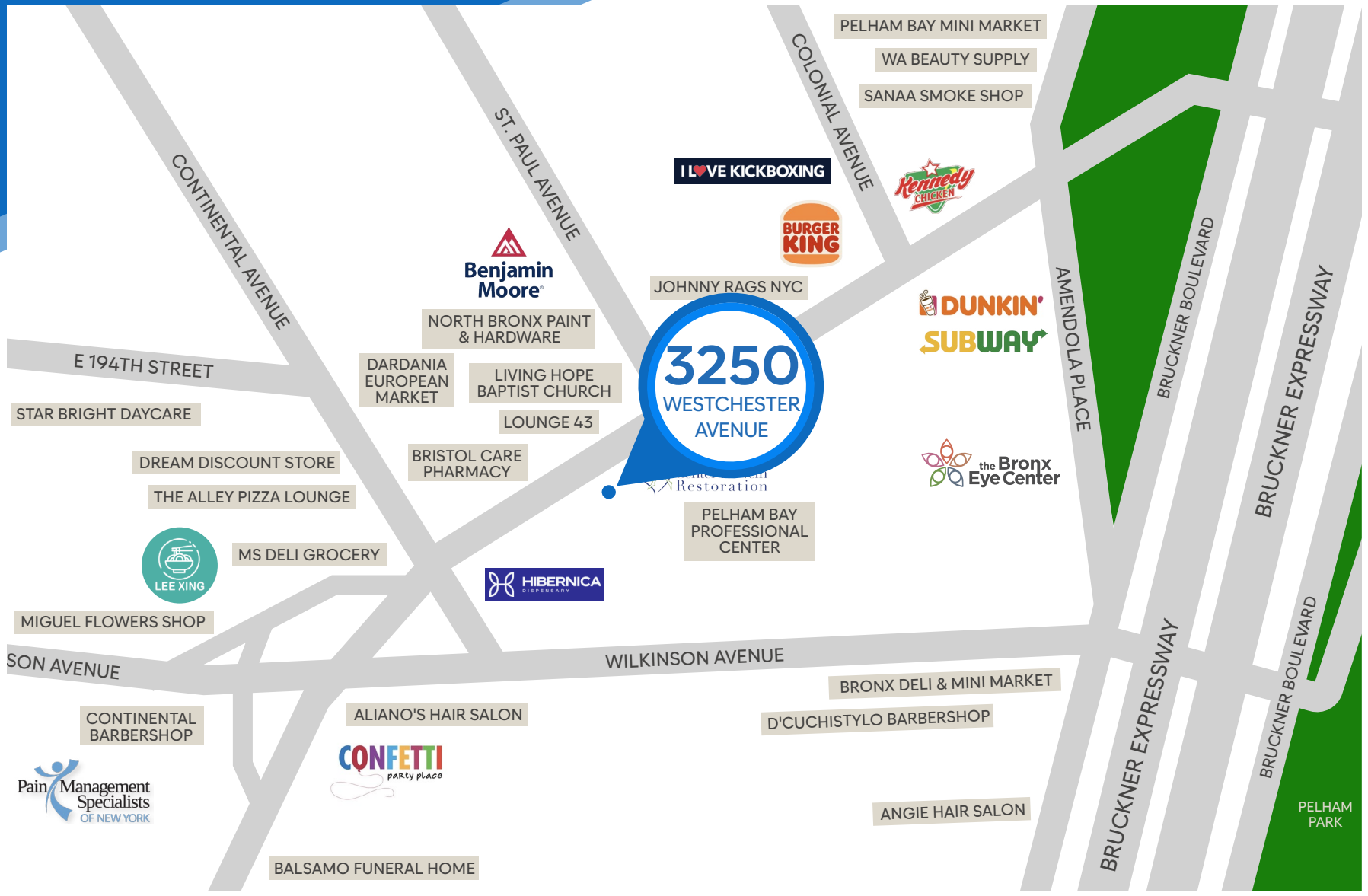
All information supplied is from sources deemed reliable and is furnished subject to errors, omissions, modifications, removal of the listing from sale or lease, and to any listing conditions, including the rates and manner of payment of commissions for particular offerings imposed by Meridian Capital Group. This information may include estimates and projections prepared by Meridian Capital Group with respect to future events, and these future events may or may not actually occur. Such estimates and projections reflect various assumptions concerning anticipated results. While Meridian Capital Group believes these assumptions are reasonable, there can be no assurance that any of these estimates and projections will be correct. Therefore, actual results may vary materially from these estimates and projections. Any square footage dimensions set forth are approximate.

# 3250 WESTCHESTER AVENUE

PELHAM BAY, BRONX | Between Continental Avenue and Amendola Place

OFFICE FOR LEASE

NEIGHBORS



**NOAM AZIZ**  
Senior Director  
212.468.5984  
naziz@meridiancapital.com

**DANIEL ZACAİM**  
Associate  
212.468.5910  
dzacaim@meridiancapital.com

**JASON BERISHA**  
Associate  
212.468.5955  
jberisha@meridiancapital.com



**MERIDIAN**  
RETAIL LEASING

All information supplied is from sources deemed reliable and is furnished subject to errors, omissions, modifications, removal of the listing from sale or lease, and to any listing conditions, including the rates and manner of payment of commissions for particular offerings imposed by Meridian Capital Group. This information may include estimates and projections prepared by Meridian Capital Group with respect to future events, and these future events may or may not actually occur. Such estimates and projections reflect various assumptions concerning anticipated results. While Meridian Capital Group believes these assumptions are reasonable, there can be no assurance that any of these estimates and projections will be correct. Therefore, actual results may vary materially from these estimates and projections. Any square footage dimensions set forth are approximate.