

2200

FREDERICK DOUGLASS BOULEVARD
HARLEM, NYC

Between West 118th & 119th Streets

RESTAURANT FOR LEASE

APPROXIMATE SIZE

Ground Floor: 1,700 SF
Full Basement

ASKING RENT

~~\$15,500/Month~~ Reduced
\$15,000/Month

POSSESSION

Immediate

TERM

Negotiable

FRONTAGE

70 FT

COMMENTS

- Turn-key restaurant
- Vented with gas and hood
- Walk-in boxes included
- Full glass frontage
- Strong F&B co-tenancy

NEIGHBORS

Lee Lee's Baked Goods • Double Dutch Espresso •
Silvana • CopperLeaf Bakery • Vinateria • Chocolat
Restaurant & Bar • Starbucks • Club Pilates •
Levain Bakery • H&M • Wingstop • Raising Cane's

TRANSPORTATION



PROPERTY INFORMATION

NOAM AZIZ

Senior Director
212.468.5984
naziz@meridiancapital.com

DANIEL ZACAIM

Associate
212.468.5910
dzacaim@meridiancapital.com

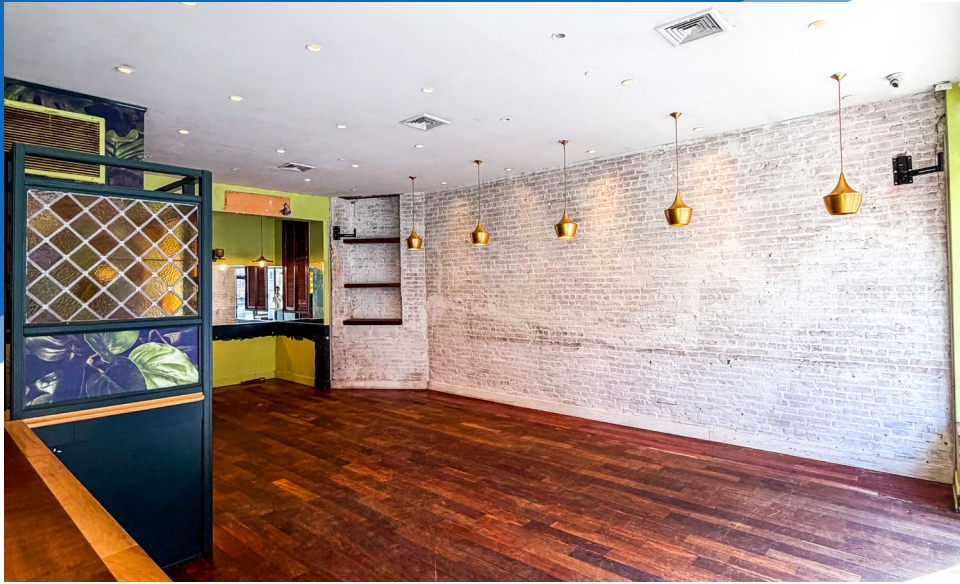


MERIDIAN
RETAIL LEASING

All information supplied is from sources deemed reliable and is furnished subject to errors, omissions, modifications, removal of the listing from sale or lease, and to any listing conditions, including the rates and manner of payment of commissions for particular offerings imposed by Meridian Capital Group. This information may include estimates and projections prepared by Meridian Capital Group with respect to future events, and these future events may or may not actually occur. Such estimates and projections reflect various assumptions concerning anticipated results. While Meridian Capital Group believes these assumptions are reasonable, there can be no assurance that any of these estimates and projections will be correct. Therefore, actual results may vary materially from these estimates and projections. Any square footage dimensions set forth are approximate.

2200 FREDERICK DOUGLASS BOULEVARD
HARLEM, NYC | Between West 118th and 119th Streets

RESTAURANT FOR LEASE



INTERIOR

NOAM AZIZ
Senior Director
212.468.5984
naziz@meridiancapital.com

DANIEL ZACAİM
Associate
212.468.5910
dzacaim@meridiancapital.com

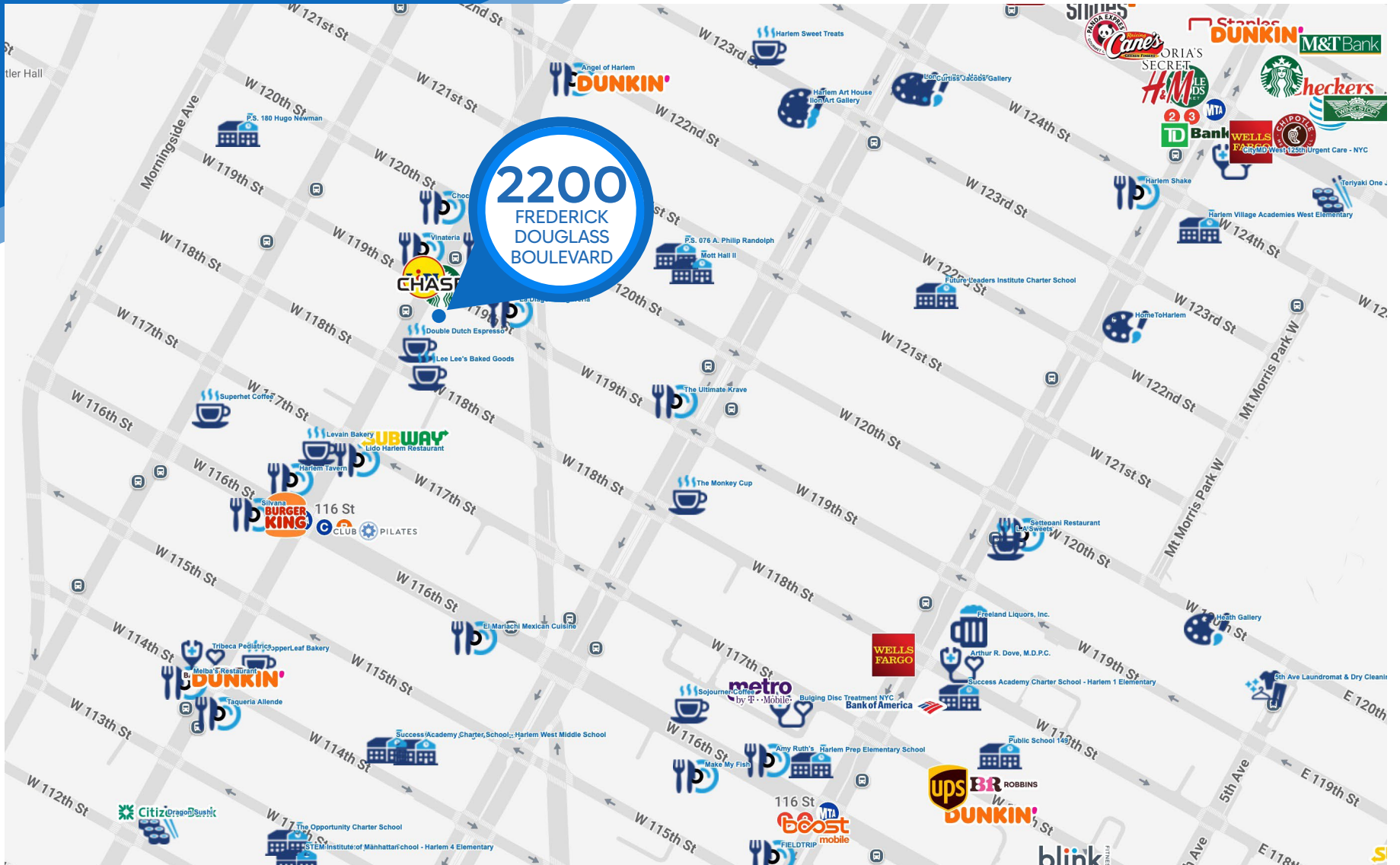


MERIDIAN
RETAIL LEASING

All information supplied is from sources deemed reliable and is furnished subject to errors, omissions, modifications, removal of the listing from sale or lease, and to any listing conditions, including the rates and manner of payment of commissions for particular offerings imposed by Meridian Capital Group. This information may include estimates and projections prepared by Meridian Capital Group with respect to future events, and these future events may or may not actually occur. Such estimates and projections reflect various assumptions concerning anticipated results. While Meridian Capital Group believes these assumptions are reasonable, there can be no assurance that any of these estimates and projections will be correct. Therefore, actual results may vary materially from these estimates and projections. Any square footage dimensions set forth are approximate.

2200 FREDERICK DOUGLASS BOULEVARD
 HARLEM, NYC | Between West 118th and 119th Streets

RESTAURANT FOR LEASE



NEIGHBORS

NOAM AZIZ
 Senior Director
 212.468.5984
 naziz@meridiancapital.com

DANIEL ZACAIM
 Associate
 212.468.5910
 dzacaim@meridiancapital.com



MERIDIAN
 RETAIL LEASING

All information supplied is from sources deemed reliable and is furnished subject to errors, omissions, modifications, removal of the listing from sale or lease, and to any listing conditions, including the rates and manner of payment of commissions for particular offerings imposed by Meridian Capital Group. This information may include estimates and projections prepared by Meridian Capital Group with respect to future events, and these future events may or may not actually occur. Such estimates and projections reflect various assumptions concerning anticipated results. While Meridian Capital Group believes these assumptions are reasonable, there can be no assurance that any of these estimates and projections will be correct. Therefore, actual results may vary materially from these estimates and projections. Any square footage dimensions set forth are approximate.