

# 2130

THIRD AVENUE  
EAST HARLEM, NYC

Between East 116<sup>th</sup> & 117<sup>th</sup> Streets

RETAIL/RESTAURANT FOR LEASE



#### APPROXIMATE SIZE

Ground Floor: 890 SF  
Basement: 1,000 SF

#### ASKING RENT

\$9,000/Month

#### POSSESSION

Immediate

#### TERM

Negotiable

#### FRONTAGE

15 FT

#### COMMENTS

- Vented space with gas and hood
- Brand-new HVAC and bathroom
- Ownership open to TI
- All uses considered

#### NEIGHBORS

- Taco Bell • McDonald's • Champions Martial Arts
- Terrific Wings • Chase Bank • Subway • Capri Bakery • TD Bank • Super Nice Coffee and Bakery
- Wendy's • Hot Jalapeno Mexican Restaurant

#### TRANSPORTATION

6

PROPERTY INFORMATION

#### ALEC NAMDAR

Senior Associate  
212.468.5915  
anamdar@meridiancapital.com

#### DANIEL RACHLINE

Senior Associate  
212.468.5956  
drachline@meridiancapital.com

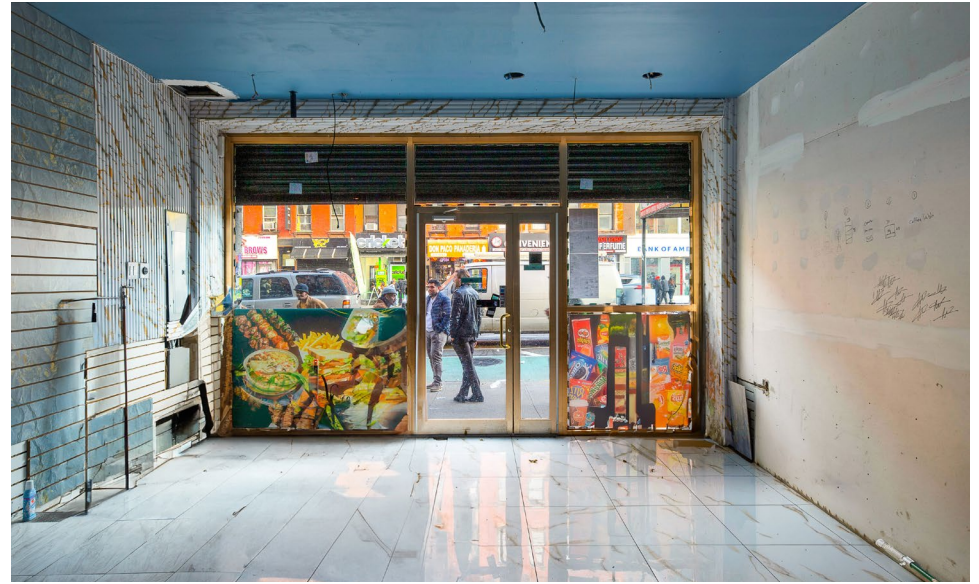


**MERIDIAN**  
RETAIL LEASING

All information supplied is from sources deemed reliable and is furnished subject to errors, omissions, modifications, removal of the listing from sale or lease, and to any listing conditions, including the rates and manner of payment of commissions for particular offerings imposed by Meridian Capital Group. This information may include estimates and projections prepared by Meridian Capital Group with respect to future events, and these future events may or may not actually occur. Such estimates and projections reflect various assumptions concerning anticipated results. While Meridian Capital Group believes these assumptions are reasonable, there can be no assurance that any of these estimates and projections will be correct. Therefore, actual results may vary materially from these estimates and projections. Any square footage dimensions set forth are approximate.

2130 THIRD AVENUE  
EAST HARLEM, NYC | Between East 116<sup>th</sup> and 117<sup>th</sup> Streets

RETAIL/RESTAURANT FOR LEASE



INTERIOR

ALEC NAMDAR  
Senior Associate  
212.468.5915  
anamdar@meridiancapital.com

DANIEL RACHLINE  
Senior Associate  
212.468.5956  
drachline@meridiancapital.com



**MERIDIAN**  
RETAIL LEASING

All information supplied is from sources deemed reliable and is furnished subject to errors, omissions, modifications, removal of the listing from sale or lease, and to any listing conditions, including the rates and manner of payment of commissions for particular offerings imposed by Meridian Capital Group. This information may include estimates and projections prepared by Meridian Capital Group with respect to future events, and these future events may or may not actually occur. Such estimates and projections reflect various assumptions concerning anticipated results. While Meridian Capital Group believes these assumptions are reasonable, there can be no assurance that any of these estimates and projections will be correct. Therefore, actual results may vary materially from these estimates and projections. Any square footage dimensions set forth are approximate.

2130 THIRD AVENUE  
EAST HARLEM, NYC | Between East 116<sup>th</sup> and 117<sup>th</sup> Streets

RETAIL/RESTAURANT FOR LEASE

INTERIOR | RENDERING



ALEC NAMDAR

Senior Associate  
212.468.5915

[anamdar@meridiancapital.com](mailto:anamdar@meridiancapital.com)

DANIEL RACHLINE

Senior Associate  
212.468.5956

[drachline@meridiancapital.com](mailto:drachline@meridiancapital.com)



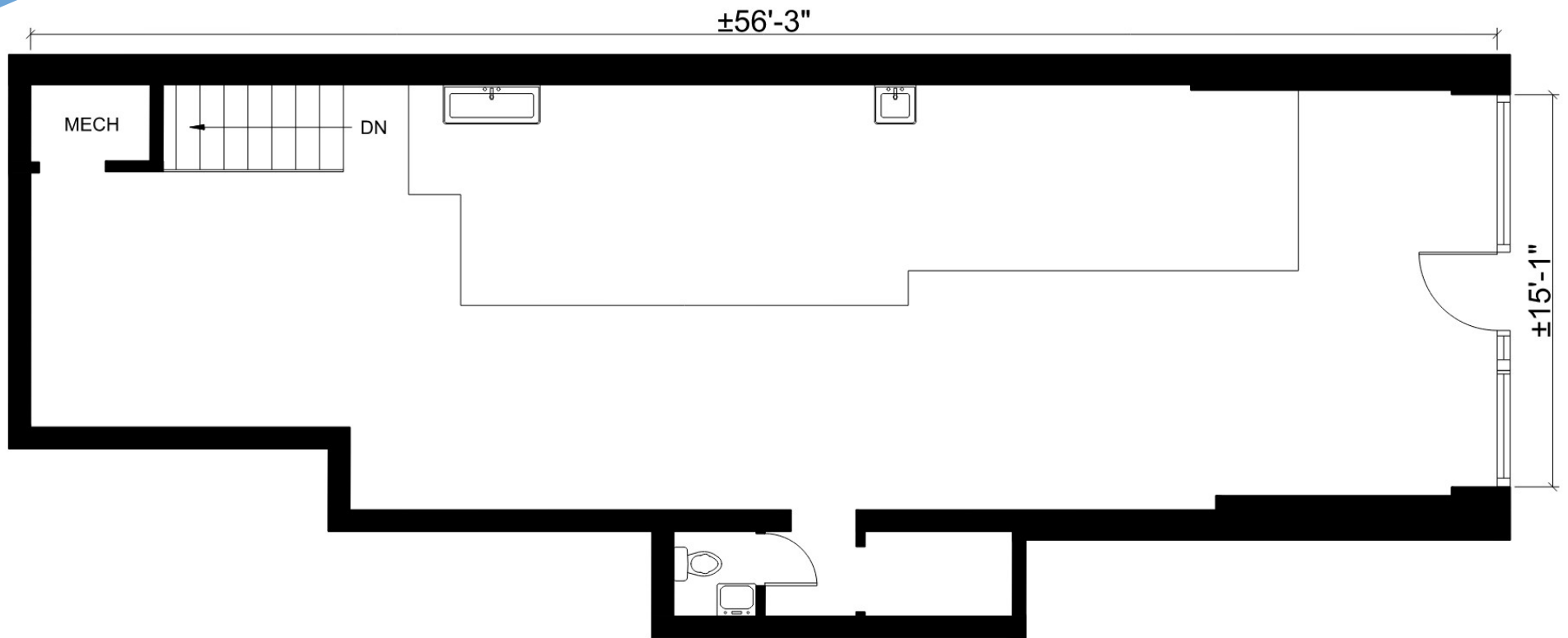
**MERIDIAN**  
RETAIL LEASING

All information supplied is from sources deemed reliable and is furnished subject to errors, omissions, modifications, removal of the listing from sale or lease, and to any listing conditions, including the rates and manner of payment of commissions for particular offerings imposed by Meridian Capital Group. This information may include estimates and projections prepared by Meridian Capital Group with respect to future events, and these future events may or may not actually occur. Such estimates and projections reflect various assumptions concerning anticipated results. While Meridian Capital Group believes these assumptions are reasonable, there can be no assurance that any of these estimates and projections will be correct. Therefore, actual results may vary materially from these estimates and projections. Any square footage dimensions set forth are approximate.

2130 THIRD AVENUE  
EAST HARLEM, NYC | Between East 116<sup>th</sup> and 117<sup>th</sup> Streets

RETAIL/RESTAURANT FOR LEASE

FLOOR PLAN



ALEC NAMDAR  
Senior Associate  
212.468.5915  
anamdar@meridiancapital.com

DANIEL RACHLINE  
Senior Associate  
212.468.5956  
drachline@meridiancapital.com



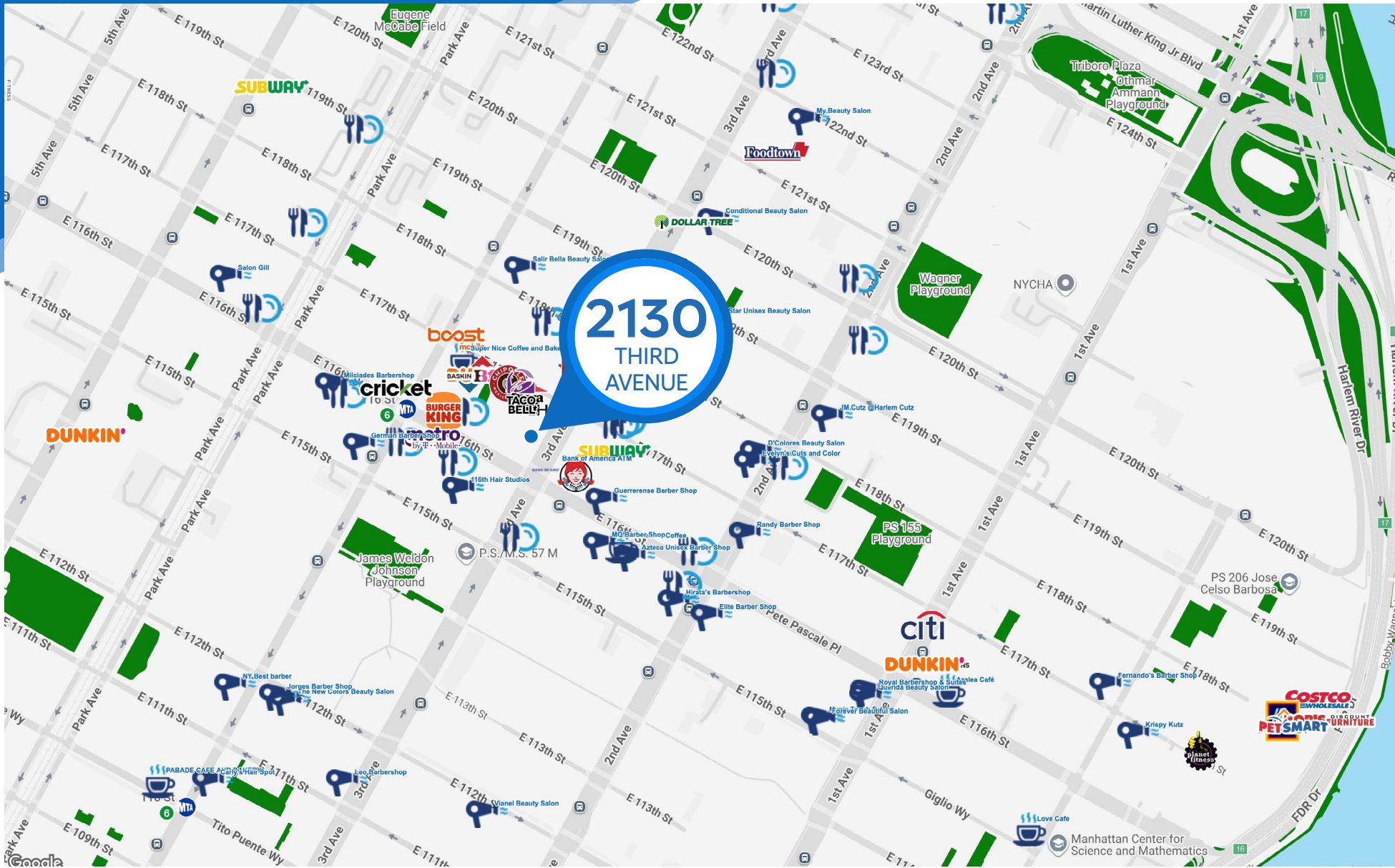
**MERIDIAN**  
RETAIL LEASING

All information supplied is from sources deemed reliable and is furnished subject to errors, omissions, modifications, removal of the listing from sale or lease, and to any listing conditions, including the rates and manner of payment of commissions for particular offerings imposed by Meridian Capital Group. This information may include estimates and projections prepared by Meridian Capital Group with respect to future events, and these future events may or may not actually occur. Such estimates and projections reflect various assumptions concerning anticipated results. While Meridian Capital Group believes these assumptions are reasonable, there can be no assurance that any of these estimates and projections will be correct. Therefore, actual results may vary materially from these estimates and projections. Any square footage dimensions set forth are approximate.

# 2130 THIRD AVENUE

EAST HARLEM, NYC | Between East 116<sup>th</sup> and 117<sup>th</sup> Streets

## RETAIL/RESTAURANT FOR LEASE



NEIGHBORS

**ALEC NAMDAR**  
Senior Associate  
212.468.5915  
anamdar@meridiancapital.com

**DANIEL RACHLINE**  
Senior Associate  
212.468.5956  
drachline@meridiancapital.com



**MERIDIAN**  
RETAIL LEASING

All information supplied is from sources deemed reliable and is furnished subject to errors, omissions, modifications, removal of the listing from sale or lease, and to any listing conditions, including the rates and manner of payment of commissions for particular offerings imposed by Meridian Capital Group. This information may include estimates and projections prepared by Meridian Capital Group with respect to future events, and these future events may or may not actually occur. Such estimates and projections reflect various assumptions concerning anticipated results. While Meridian Capital Group believes these assumptions are reasonable, there can be no assurance that any of these estimates and projections will be correct. Therefore, actual results may vary materially from these estimates and projections. Any square footage dimensions set forth are approximate.