

# 43

## WEST 33<sup>RD</sup> STREET KOREATOWN, NYC

Between Fifth & Sixth Avenues

OFFICE FOR LEASE



PROPERTY INFORMATION

### APPROXIMATE SIZE

Suite #400: 700 SF  
Suite #401: 1,500 SF

### ASKING RENT

Suite #400: \$3,000/Month  
Suite #401: \$5,800/Month

### TERM

5-10 Years

### POSSESSION

Immediate

### COMMENTS

- Built-out office spaces
- Bathroom access in each suite
- Brand-new build-out in white-box condition

### NEIGHBORS

Empire State Building • Starbucks Reserve • Chopt • Juice Press • Blank Street • Wells Fargo • Buttercup Bake Shop • Arlo Hotel • Tumi • Prince Tea House

### TRANSPORTATION

**B D F M N Q R W 6**

### NOAM AZIZ

Senior Director  
212.468.5984  
naziz@meridiancapital.com

### JOSEPH KHOJAHINY

Associate  
212.468.5913  
jkhojahiny@meridiancapital.com



**MERIDIAN**  
RETAIL LEASING

All information supplied is from sources deemed reliable and is furnished subject to errors, omissions, modifications, removal of the listing from sale or lease, and to any listing conditions, including the rates and manner of payment of commissions for particular offerings imposed by Meridian Capital Group. This information may include estimates and projections prepared by Meridian Capital Group with respect to future events, and these future events may or may not actually occur. Such estimates and projections reflect various assumptions concerning anticipated results. While Meridian Capital Group believes these assumptions are reasonable, there can be no assurance that any of these estimates and projections will be correct. Therefore, actual results may vary materially from these estimates and projections. Any square footage dimensions set forth are approximate.

# 43 WEST 33<sup>RD</sup> STREET

KOREATOWN, NYC | Between Fifth and Sixth Avenues

OFFICE FOR LEASE



INTERIOR

**NOAM AZIZ**  
Senior Director  
212.468.5984  
naziz@meridiancapital.com

**JOSEPH KHOJAHINY**  
Associate  
212.468.5913  
jkhohahiny@meridiancapital.com



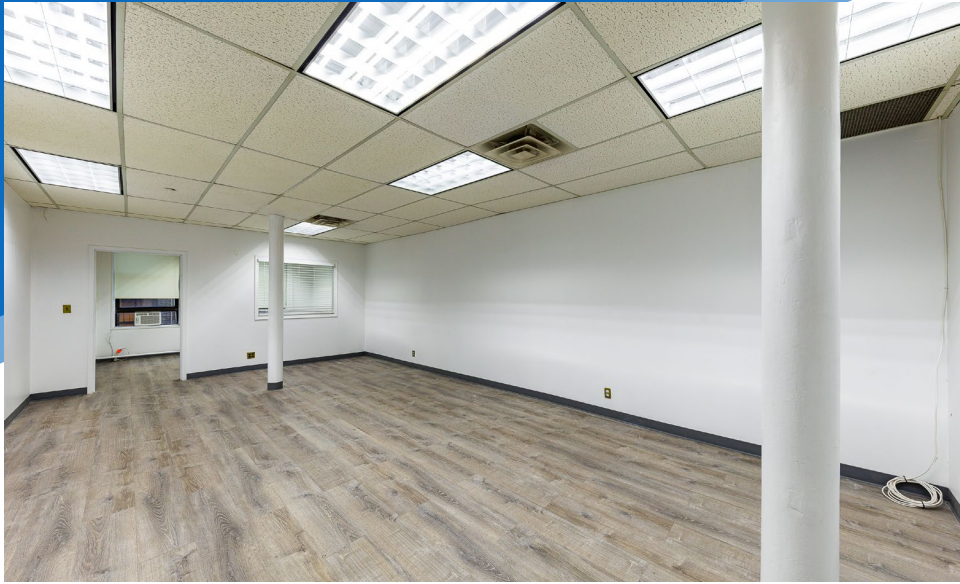
**MERIDIAN**  
RETAIL LEASING

All information supplied is from sources deemed reliable and is furnished subject to errors, omissions, modifications, removal of the listing from sale or lease, and to any listing conditions, including the rates and manner of payment of commissions for particular offerings imposed by Meridian Capital Group. This information may include estimates and projections prepared by Meridian Capital Group with respect to future events, and these future events may or may not actually occur. Such estimates and projections reflect various assumptions concerning anticipated results. While Meridian Capital Group believes these assumptions are reasonable, there can be no assurance that any of these estimates and projections will be correct. Therefore, actual results may vary materially from these estimates and projections. Any square footage dimensions set forth are approximate.

# 43 WEST 33<sup>RD</sup> STREET

KOREATOWN, NYC | Between Fifth and Sixth Avenues

OFFICE FOR LEASE



INTERIOR

**NOAM AZIZ**  
Senior Director  
212.468.5984  
naziz@meridiancapital.com

**JOSEPH KHOJAHINY**  
Associate  
212.468.5913  
jkhoghiny@meridiancapital.com



**MERIDIAN**  
RETAIL LEASING

All information supplied is from sources deemed reliable and is furnished subject to errors, omissions, modifications, removal of the listing from sale or lease, and to any listing conditions, including the rates and manner of payment of commissions for particular offerings imposed by Meridian Capital Group. This information may include estimates and projections prepared by Meridian Capital Group with respect to future events, and these future events may or may not actually occur. Such estimates and projections reflect various assumptions concerning anticipated results. While Meridian Capital Group believes these assumptions are reasonable, there can be no assurance that any of these estimates and projections will be correct. Therefore, actual results may vary materially from these estimates and projections. Any square footage dimensions set forth are approximate.



NEIGHBORS

**NOAM AZIZ**  
 Senior Director  
 212.468.5984  
 naziz@meridiancapital.com

**JOSEPH KHOJAHINY**  
 Associate  
 212.468.5913  
 jkjojahiny@meridiancapital.com



**MERIDIAN**  
 RETAIL LEASING