

35-01

36TH AVENUE ASTORIA, QUEENS

Corner of 36th Avenue & 35th Street

RETAIL FOR LEASE

APPROXIMATE SIZE
1,750 SF

POSSESSION
Immediate

ASKING RENT

Space A: 1,000 SF (Corner): \$75 PSF

Space B: 750 SF (Inline): \$60 PSF

~~Space C: 770 SF: \$60 PSF~~ Leased

~~Space D: 800 SF: \$60 PSF~~ Leased

TERM

Negotiable

FRONTAGE

92 FT Wraparound

COMMENTS

- Retail spaces for lease at the base of a 9-story luxury office building
- High-visibility corner with wraparound frontage and excellent signage potential
- Soaring 15' ceilings
- Ideal for child-focused services, wellness, medical, fitness, café, or boutique retail
- Surrounded by dense residential, schools, and new developments
- Divisions considered

NEIGHBORS

Citadel Foods • Parts Cargo • Luke Hut • Regal Cinemas • Pig Beach • NYC Iron Workers • Soccerroof • Veronica's Bar • Fusion Juice Bar

TRANSPORTATION



PROPERTY INFORMATION

JAMES FAMULARO

President
646.658.7373
jfamularo@meridiancapital.com

JORDAN LANGER

Senior Associate
212.468.5977
jlanger@meridiancapital.com

MARCELO DEMORAES

Associate
212.468.5904
mdemoraes@meridiancapital.com



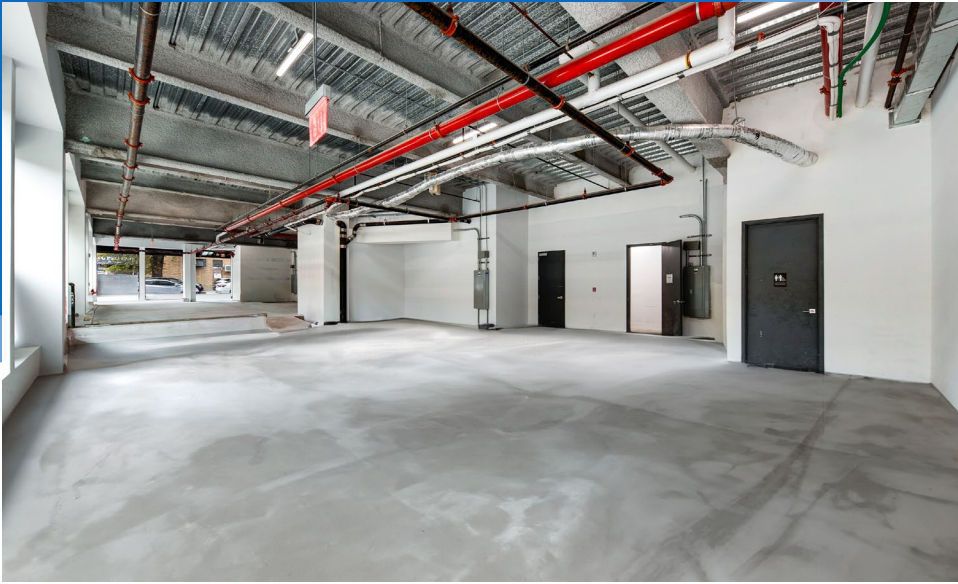
MERIDIAN
RETAIL LEASING

All information supplied is from sources deemed reliable and is furnished subject to errors, omissions, modifications, removal of the listing from sale or lease, and to any listing conditions, including the rates and manner of payment of commissions for particular offerings imposed by Meridian Capital Group. This information may include estimates and projections prepared by Meridian Capital Group with respect to future events, and these future events may or may not actually occur. Such estimates and projections reflect various assumptions concerning anticipated results. While Meridian Capital Group believes these assumptions are reasonable, there can be no assurance that any of these estimates and projections will be correct. Therefore, actual results may vary materially from these estimates and projections. Any square footage dimensions set forth are approximate.

35-01 36TH AVENUE

ASTORIA, QUEENS | Corner of 36th Avenue and 35th Street

RETAIL FOR LEASE



INTERIOR

JAMES FAMULARO

President
646.658.7373
jfamularo@meridiancapital.com

JORDAN LANGER

Senior Associate
212.468.5977
jlanger@meridiancapital.com

MARCELO DEMORAES

Associate
212.468.5904
mdemoraes@meridiancapital.com



MERIDIAN
RETAIL LEASING

All information supplied is from sources deemed reliable and is furnished subject to errors, omissions, modifications, removal of the listing from sale or lease, and to any listing conditions, including the rates and manner of payment of commissions for particular offerings imposed by Meridian Capital Group. This information may include estimates and projections prepared by Meridian Capital Group with respect to future events, and these future events may or may not actually occur. Such estimates and projections reflect various assumptions concerning anticipated results. While Meridian Capital Group believes these assumptions are reasonable, there can be no assurance that any of these estimates and projections will be correct. Therefore, actual results may vary materially from these estimates and projections. Any square footage dimensions set forth are approximate.

35-01 36TH AVENUE

ASTORIA, QUEENS | Corner of 36th Avenue and 35th Street

RETAIL FOR LEASE



JAMES FAMULARO

President
646.658.7373
jfamularo@meridiancapital.com

JORDAN LANGER

Senior Associate
212.468.5977
jlanger@meridiancapital.com

MARCELO DEMORAES

Associate
212.468.5904
mdemoraes@meridiancapital.com



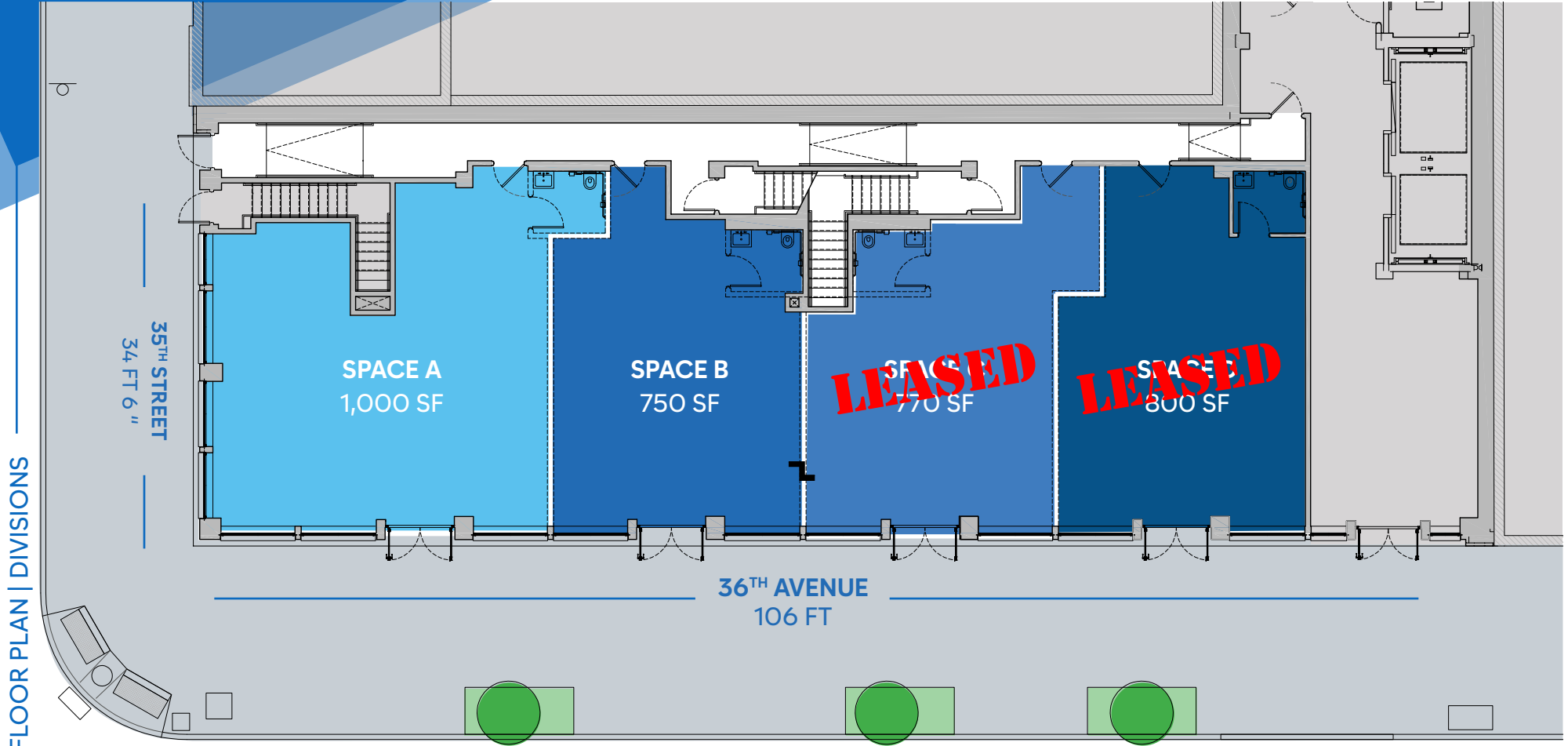
MERIDIAN
RETAIL LEASING

All information supplied is from sources deemed reliable and is furnished subject to errors, omissions, modifications, removal of the listing from sale or lease, and to any listing conditions, including the rates and manner of payment of commissions for particular offerings imposed by Meridian Capital Group. This information may include estimates and projections prepared by Meridian Capital Group with respect to future events, and these future events may or may not actually occur. Such estimates and projections reflect various assumptions concerning anticipated results. While Meridian Capital Group believes these assumptions are reasonable, there can be no assurance that any of these estimates and projections will be correct. Therefore, actual results may vary materially from these estimates and projections. Any square footage dimensions set forth are approximate.

35-01 36TH AVENUE

ASTORIA, QUEENS | Corner of 36th Avenue and 35th Street

RETAIL FOR LEASE



JAMES FAMULARO

President
646.658.7373
jfamularo@meridiancapital.com

JORDAN LANGER

Senior Associate
212.468.5977
jlanger@meridiancapital.com

MARCELO DEMORAES

Associate
212.468.5904
mdemoraes@meridiancapital.com



MERIDIAN
RETAIL LEASING

All information supplied is from sources deemed reliable and is furnished subject to errors, omissions, modifications, removal of the listing from sale or lease, and to any listing conditions, including the rates and manner of payment of commissions for particular offerings imposed by Meridian Capital Group. This information may include estimates and projections prepared by Meridian Capital Group with respect to future events, and these future events may or may not actually occur. Such estimates and projections reflect various assumptions concerning anticipated results. While Meridian Capital Group believes these assumptions are reasonable, there can be no assurance that any of these estimates and projections will be correct. Therefore, actual results may vary materially from these estimates and projections. Any square footage dimensions set forth are approximate.

35-01 36TH AVENUE

ASTORIA, QUEENS | Corner of 36th Avenue and 35th Street

RETAIL FOR LEASE

NEIGHBORS



JAMES FAMULARO
 President
 646.658.7373
 jfamularo@meridiancapital.com

JORDAN LANGER
 Senior Associate
 212.468.5977
 jlanger@meridiancapital.com

MARCELO DEMORAES
 Associate
 212.468.5904
 mdemoraes@meridiancapital.com



MERIDIAN
 RETAIL LEASING

All information supplied is from sources deemed reliable and is furnished subject to errors, omissions, modifications, removal of the listing from sale or lease, and to any listing conditions, including the rates and manner of payment of commissions for particular offerings imposed by Meridian Capital Group. This information may include estimates and projections prepared by Meridian Capital Group with respect to future events, and these future events may or may not actually occur. Such estimates and projections reflect various assumptions concerning anticipated results. While Meridian Capital Group believes these assumptions are reasonable, there can be no assurance that any of these estimates and projections will be correct. Therefore, actual results may vary materially from these estimates and projections. Any square footage dimensions set forth are approximate.