

305

EAST FORDHAM ROAD FORDHAM, BRONX

Corner of East Fordham & East Kingsbridge Roads

RETAIL FOR LEASE

APPROXIMATE SIZE

Second Floor: 4,000 SF

ASKING RENT

\$12,500/Month

POSSESSION

Immediate

TERM

Negotiable

CEILING HEIGHT

13 FT

COMMENTS

- Newly-updated space to be delivered in clean, move-in ready condition
- 50 FT of prominent 2nd-floor windows overlooking East Fordham Road
- Affordable option for office, training, fitness, and other studio concepts
- Surrounded by national retail
- Large signage opportunity

NEIGHBORS

Gap • Wing Stop • Kids Foot Locker • Target
• Verizon • Popeyes • Cinnabon • Gong
Cha • VIM • Wendy's • Chipotle • Rainbow
• PC Richard & Son • Chick-Fil-A

TRANSPORTATION



PROPERTY INFORMATION

NOAM AZIZ

Director
212.468.5984
naziz@meridiancapital.com

STEPHEN LIGAMBI

Senior Associate
212.468.5985
sligambi@meridiancapital.com

SHAYA KATZ

Associate
212.468.5991
skatz@meridiancapital.com



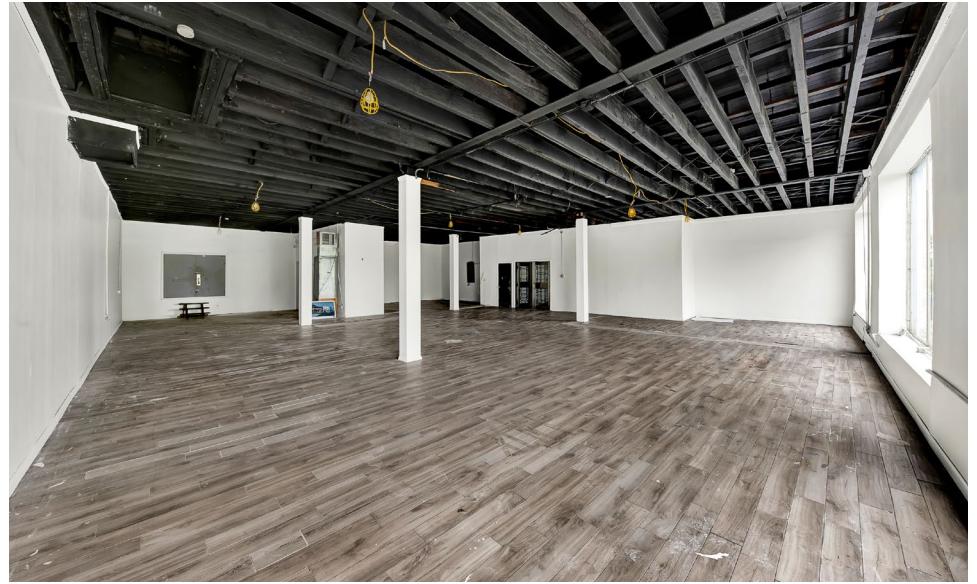
MERIDIAN
RETAIL LEASING

All information supplied is from sources deemed reliable and is furnished subject to errors, omissions, modifications, removal of the listing from sale or lease, and to any listing conditions, including the rates and manner of payment of commissions for particular offerings imposed by Meridian Capital Group. This information may include estimates and projections prepared by Meridian Capital Group with respect to future events, and these future events may or may not actually occur. Such estimates and projections reflect various assumptions concerning anticipated results. While Meridian Capital Group believes these assumptions are reasonable, there can be no assurance that any of these estimates and projections will be correct. Therefore, actual results may vary materially from these estimates and projections. Any square footage dimensions set forth are approximate.

305 EAST FORDHAM ROAD

FORDHAM, BRONX | Corner of East Fordham and East Kingsbridge Roads

RETAIL FOR LEASE



INTERIOR

NOAM AZIZ

Director
212.468.5984
naziz@meridiancapital.com

STEPHEN LIGAMBI

Senior Associate
212.468.5985
sligambi@meridiancapital.com

SHAYA KATZ

Associate
212.468.5991
skatz@meridiancapital.com



MERIDIAN
RETAIL LEASING

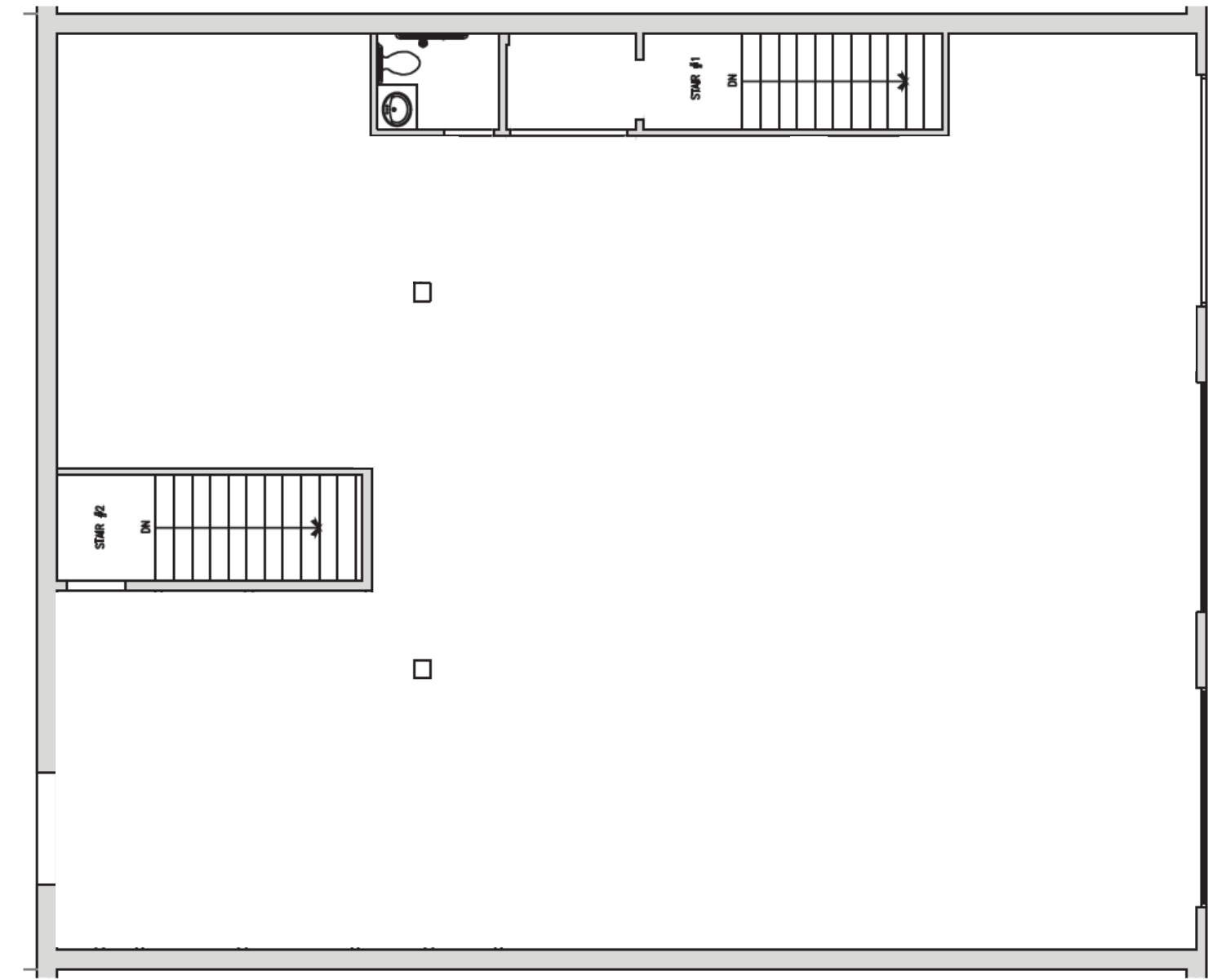
All information supplied is from sources deemed reliable and is furnished subject to errors, omissions, modifications, removal of the listing from sale or lease, and to any listing conditions, including the rates and manner of payment of commissions for particular offerings imposed by Meridian Capital Group. This information may include estimates and projections prepared by Meridian Capital Group with respect to future events, and these future events may or may not actually occur. Such estimates and projections reflect various assumptions concerning anticipated results. While Meridian Capital Group believes these assumptions are reasonable, there can be no assurance that any of these estimates and projections will be correct. Therefore, actual results may vary materially from these estimates and projections. Any square footage dimensions set forth are approximate.

305 EAST FORDHAM ROAD

FORDHAM, BRONX | Corner of East Fordham and East Kingsbridge Roads

RETAIL FOR LEASE

FLOOR PLAN



NOAM AZIZ

Director
212.468.5984
naziz@meridiancapital.com

STEPHEN LIGAMBI

Senior Associate
212.468.5985
sligambi@meridiancapital.com

SHAYA KATZ

Associate
212.468.5991
skatz@meridiancapital.com



MERIDIAN
RETAIL LEASING

All information supplied is from sources deemed reliable and is furnished subject to errors, omissions, modifications, removal of the listing from sale or lease, and to any listing conditions, including the rates and manner of payment of commissions for particular offerings imposed by Meridian Capital Group. This information may include estimates and projections prepared by Meridian Capital Group with respect to future events, and these future events may or may not actually occur. Such estimates and projections reflect various assumptions concerning anticipated results. While Meridian Capital Group believes these assumptions are reasonable, there can be no assurance that any of these estimates and projections will be correct. Therefore, actual results may vary materially from these estimates and projections. Any square footage dimensions set forth are approximate.

305 EAST FORDHAM ROAD

FORDHAM, BRONX | Corner of East Fordham and East Kingsbridge Roads

RETAIL FOR LEASE

NEIGHBORS



NOAM AZIZ
 Director
 212.468.5984
 naziz@meridiancapital.com

STEPHEN LIGAMBI
 Senior Associate
 212.468.5985
 sligambi@meridiancapital.com

SHAYA KATZ
 Associate
 212.468.5991
 skatz@meridiancapital.com



MERIDIAN
 RETAIL LEASING

All information supplied is from sources deemed reliable and is furnished subject to errors, omissions, modifications, removal of the listing from sale or lease, and to any listing conditions, including the rates and manner of payment of commissions for particular offerings imposed by Meridian Capital Group. This information may include estimates and projections prepared by Meridian Capital Group with respect to future events, and these future events may or may not actually occur. Such estimates and projections reflect various assumptions concerning anticipated results. While Meridian Capital Group believes these assumptions are reasonable, there can be no assurance that any of these estimates and projections will be correct. Therefore, actual results may vary materially from these estimates and projections. Any square footage dimensions set forth are approximate.