

2715

FULTON STREET CYPRESS HILLS, BROOKLYN

Between Vermont & Wyona Streets

RETAIL FOR LEASE

APPROXIMATE SIZE

Lower Level: 1,900 SF

ASKING RENT

Upon Request

POSSESSION

Immediate

TERM

Negotiable

FRONTAGE

15 FT

COMMENTS

- Retail at the base of a luxury building
- Designated entrance
- Luxury amenities and parking
- Access to all major transportation

NEIGHBORS

NAPA • DRD Auto • Kennedy Fried Chicken
• Super 8 Hotel • Sweets & Things • ProSkin
Aesthetics • Lavega Grocery • Habibi Gourmet
Deli • Toro Taxes • Shop Fair Market

TRANSPORTATION



Long Island Rail Road



PROPERTY INFORMATION

JACOB MAYER

Director
212.468.5926
jmayer@meridiancapital.com

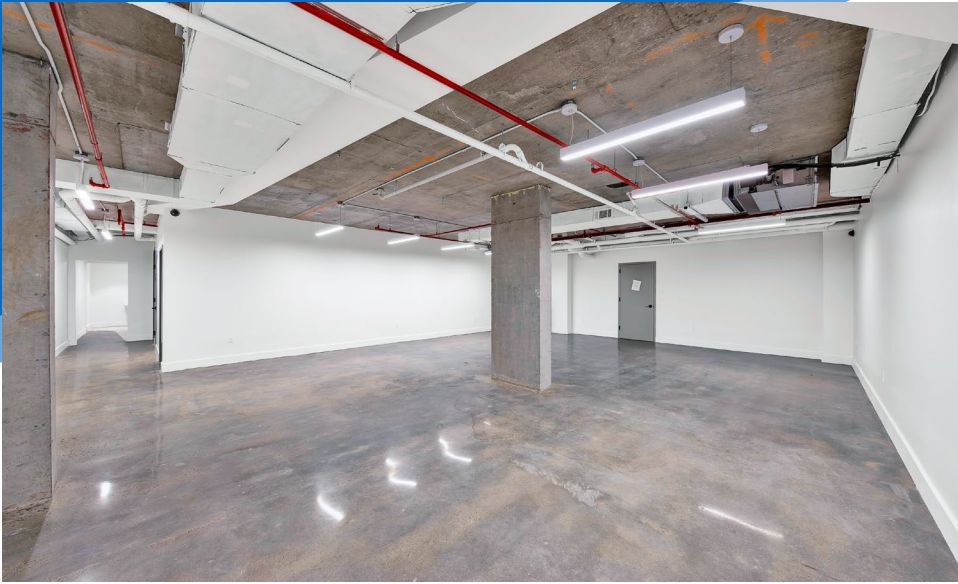
SHAYA KATZ

Associate
212.468.5991
shaya.katz@meridiancapital.com



MERIDIAN
RETAIL LEASING

All information supplied is from sources deemed reliable and is furnished subject to errors, omissions, modifications, removal of the listing from sale or lease, and to any listing conditions, including the rates and manner of payment of commissions for particular offerings imposed by Meridian Capital Group. This information may include estimates and projections prepared by Meridian Capital Group with respect to future events, and these future events may or may not actually occur. Such estimates and projections reflect various assumptions concerning anticipated results. While Meridian Capital Group believes these assumptions are reasonable, there can be no assurance that any of these estimates and projections will be correct. Therefore, actual results may vary materially from these estimates and projections. Any square footage dimensions set forth are approximate.



INTERIOR

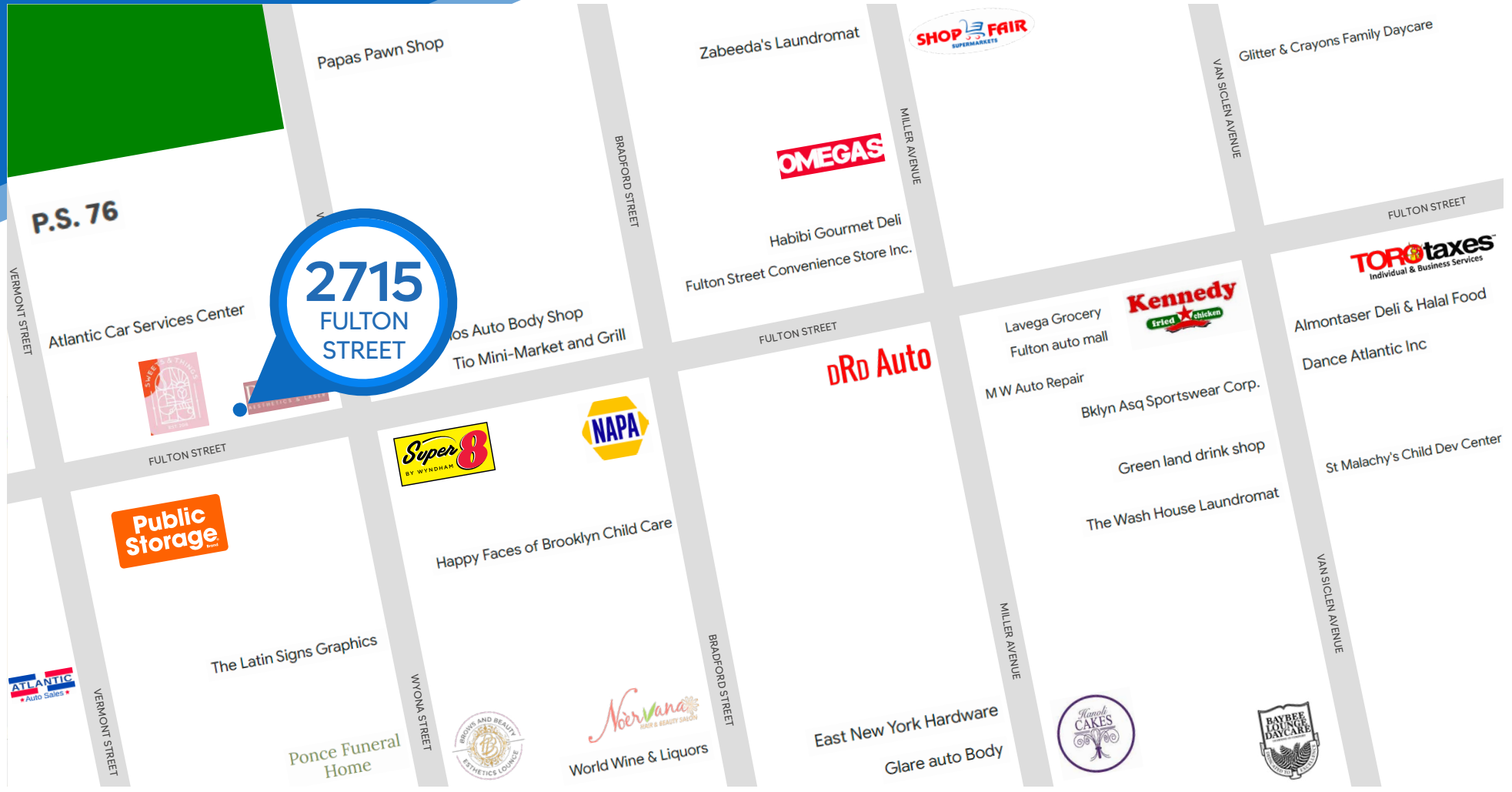
JACOB MAYER
Director
212.468.5926
jmayer@meridiancapital.com

SHAYA KATZ
Associate
212.468.5991
shaya.katz@meridiancapital.com



MERIDIAN
RETAIL LEASING

NEIGHBORS



JACOB MAYER
 Director
 212.468.5926
 jmayer@meridiancapital.com

SHAYA KATZ
 Associate
 212.468.5991
 shaya.katz@meridiancapital.com



MERIDIAN
 RETAIL LEASING

All information supplied is from sources deemed reliable and is furnished subject to errors, omissions, modifications, removal of the listing from sale or lease, and to any listing conditions, including the rates and manner of payment of commissions for particular offerings imposed by Meridian Capital Group. This information may include estimates and projections prepared by Meridian Capital Group with respect to future events, and these future events may or may not actually occur. Such estimates and projections reflect various assumptions concerning anticipated results. While Meridian Capital Group believes these assumptions are reasonable, there can be no assurance that any of these estimates and projections will be correct. Therefore, actual results may vary materially from these estimates and projections. Any square footage dimensions set forth are approximate.