

# 2715

## FULTON STREET CYPRESS HILLS, BROOKLYN

Between Vermont & Wyona Streets

RETAIL FOR LEASE

### APPROXIMATE SIZE

Ground Floor: 860 SF

### ASKING RENT

Upon Request

### POSSESSION

Immediate

### TERM

Negotiable

### FRONTAGE

15 FT

### COMMENTS

- Retail at the base of a luxury building
- Luxury amenities and parking
- Access to all major transportation

### NEIGHBORS

NAPA • DRD Auto • Kennedy Fried Chicken  
• Super 8 Hotel • Sweets & Things • ProSkin  
Aesthetics • Lavega Grocery • Habibi Gourmet  
Deli • Toro Taxes • Shop Fair Market

### TRANSPORTATION



 Long Island Rail Road



PROPERTY INFORMATION

### JACOB MAYER

Director  
212.468.5926  
jmayer@meridiancapital.com

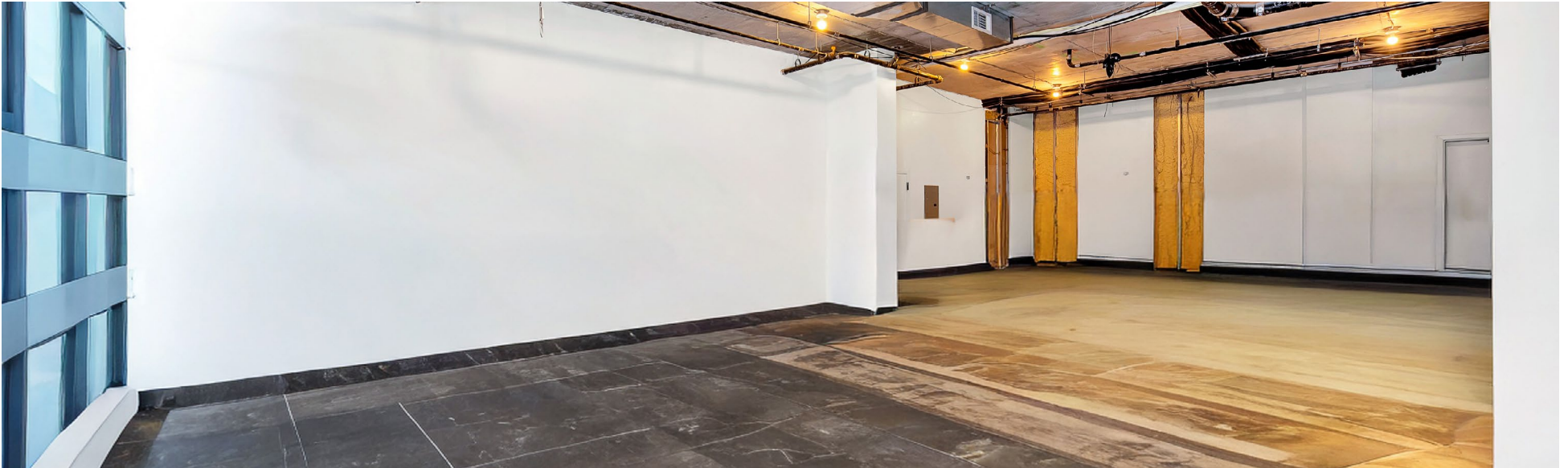
### SHAYA KATZ

Associate  
212.468.5991  
shaya.katz@meridiancapital.com



**MERIDIAN**  
RETAIL LEASING

All information supplied is from sources deemed reliable and is furnished subject to errors, omissions, modifications, removal of the listing from sale or lease, and to any listing conditions, including the rates and manner of payment of commissions for particular offerings imposed by Meridian Capital Group. This information may include estimates and projections prepared by Meridian Capital Group with respect to future events, and these future events may or may not actually occur. Such estimates and projections reflect various assumptions concerning anticipated results. While Meridian Capital Group believes these assumptions are reasonable, there can be no assurance that any of these estimates and projections will be correct. Therefore, actual results may vary materially from these estimates and projections. Any square footage dimensions set forth are approximate.



INTERIOR

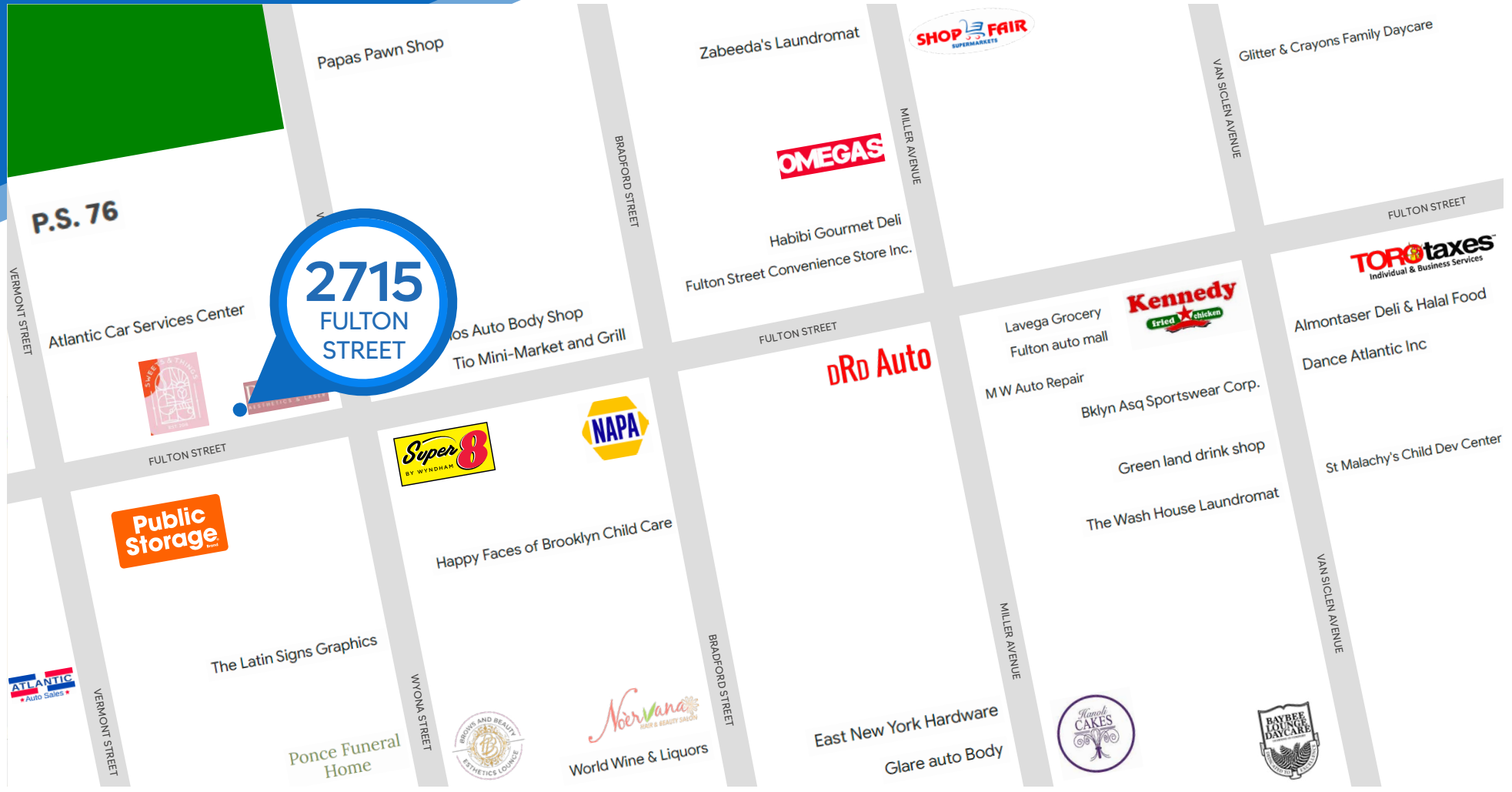
JACOB MAYER  
Director  
212.468.5926  
jmayer@meridiancapital.com

SHAYA KATZ  
Associate  
212.468.5991  
shaya.katz@meridiancapital.com



**MERIDIAN**  
RETAIL LEASING

NEIGHBORS



**JACOB MAYER**  
 Director  
 212.468.5926  
 jmayer@meridiancapital.com

**SHAYA KATZ**  
 Associate  
 212.468.5991  
 shaya.katz@meridiancapital.com



**MERIDIAN**  
 RETAIL LEASING

All information supplied is from sources deemed reliable and is furnished subject to errors, omissions, modifications, removal of the listing from sale or lease, and to any listing conditions, including the rates and manner of payment of commissions for particular offerings imposed by Meridian Capital Group. This information may include estimates and projections prepared by Meridian Capital Group with respect to future events, and these future events may or may not actually occur. Such estimates and projections reflect various assumptions concerning anticipated results. While Meridian Capital Group believes these assumptions are reasonable, there can be no assurance that any of these estimates and projections will be correct. Therefore, actual results may vary materially from these estimates and projections. Any square footage dimensions set forth are approximate.