

157

MARKET STREET NEWARK, NEW JERSEY

Between Halsey & Broad Streets

RETAIL FOR LEASE

APPROXIMATE SIZE

2,000 SF

ASKING RENT

Upon Request

POSSESSION

Immediate

TERM

Negotiable

FRONTAGE

25 FT

COMMENTS

- Built-out retail space
- Can be divided
- Heavy foot traffic
- Steps from the Prudential Center, Rutgers University Newark, and Amazon Audible

NEIGHBORS

Prudential Center • Snipes • GAP • Chipotle
• Rainbow • Foot Locker • Wells Fargo • Game Stop • GNC • Wendy's • Don Pepe • Jersey Mike's

TRANSPORTATION



PROPERTY INFORMATION

STEPHEN LIGAMBI

Senior Associate

212.468.5985

sligambi@meridiancapital.com



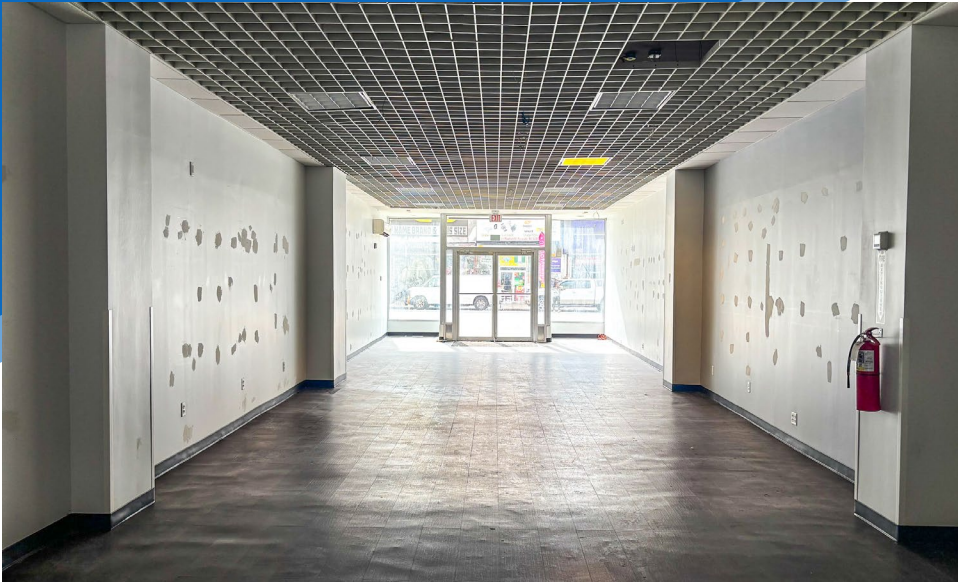
MERIDIAN
RETAIL LEASING

All information supplied is from sources deemed reliable and is furnished subject to errors, omissions, modifications, removal of the listing from sale or lease, and to any listing conditions, including the rates and manner of payment of commissions for particular offerings imposed by Meridian Capital Group. This information may include estimates and projections prepared by Meridian Capital Group with respect to future events, and these future events may or may not actually occur. Such estimates and projections reflect various assumptions concerning anticipated results. While Meridian Capital Group believes these assumptions are reasonable, there can be no assurance that any of these estimates and projections will be correct. Therefore, actual results may vary materially from these estimates and projections. Any square footage dimensions set forth are approximate.

157 MARKET STREET

NEWARK, NEW JERSEY | Between Halsey and Broad Streets

RETAIL FOR LEASE



INTERIOR

STEPHEN LIGAMBI

Senior Associate

212.468.5985

sligambi@meridiancapital.com



MERIDIAN
RETAIL LEASING

All information supplied is from sources deemed reliable and is furnished subject to errors, omissions, modifications, removal of the listing from sale or lease, and to any listing conditions, including the rates and manner of payment of commissions for particular offerings imposed by Meridian Capital Group. This information may include estimates and projections prepared by Meridian Capital Group with respect to future events, and these future events may or may not actually occur. Such estimates and projections reflect various assumptions concerning anticipated results. While Meridian Capital Group believes these assumptions are reasonable, there can be no assurance that any of these estimates and projections will be correct. Therefore, actual results may vary materially from these estimates and projections. Any square footage dimensions set forth are approximate.

157 MARKET STREET

NEWARK, NEW JERSEY | Between Halsey and Broad Streets

RETAIL FOR LEASE



NEIGHBORS

STEPHEN LIGAMBI

Senior Associate

212.468.5985

sligambi@meridiancapital.com



MERIDIAN
RETAIL LEASING

All information supplied is from sources deemed reliable and is furnished subject to errors, omissions, modifications, removal of the listing from sale or lease, and to any listing conditions, including the rates and manner of payment of commissions for particular offerings imposed by Meridian Capital Group. This information may include estimates and projections prepared by Meridian Capital Group with respect to future events, and these future events may or may not actually occur. Such estimates and projections reflect various assumptions concerning anticipated results. While Meridian Capital Group believes these assumptions are reasonable, there can be no assurance that any of these estimates and projections will be correct. Therefore, actual results may vary materially from these estimates and projections. Any square footage dimensions set forth are approximate.