

# 153-27

## JAMAICA AVENUE JAMAICA, QUEENS

Between Parsons Boulevard & 153<sup>rd</sup> Street

RETAIL FOR LEASE



PROPERTY INFORMATION

### APPROXIMATE SIZE

5,680 SF

### ASKING RENT

\$45 PSF

### POSSESSION

Immediate

### TERM

Negotiable

### FRONTAGE

100 FT

### COMMENTS

- Raw retail space in a newly constructed high-rise
- All glass frontage along Jamaica Avenue
- Fully ADA-compliant, vented, and high 20 ft ceilings
- Subdivisions considered for most retail uses
- Close to Jamaica Center and Parsons Avenue providing heavy traffic from subways and LIRR

### NEIGHBORS

The Kira Apartment • USCIS Center • Jamaica Center for Arts and Learning • Sarku Japan • McDonald's • Chase Bank • Raising Cane's • Rainbow • Popeyes • Dunkin' • Golden Krust • Jamaica Center

### TRANSPORTATION



MTA Long Island Rail Road

### NOAM AZIZ

Director  
212.468.5984  
naziz@meridiancapital.com

### AARON HAROUNIAN

Associate  
212.468.5957  
aharounian@meridiancapital.com

### DAVID SIMHON

Associate  
212.468.5947  
dsimhon@meridiancapital.com



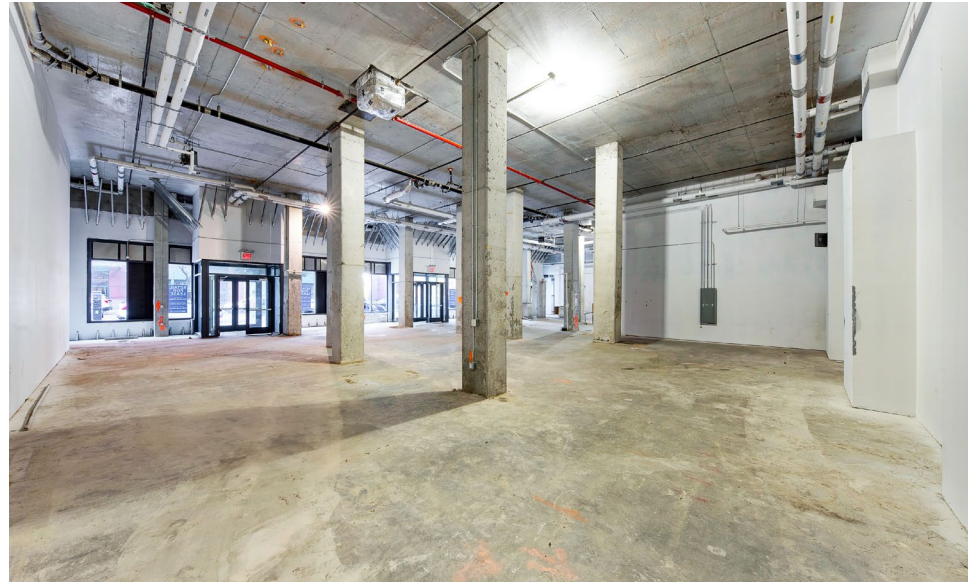
**MERIDIAN**  
RETAIL LEASING

All information supplied is from sources deemed reliable and is furnished subject to errors, omissions, modifications, removal of the listing from sale or lease, and to any listing conditions, including the rates and manner of payment of commissions for particular offerings imposed by Meridian Capital Group. This information may include estimates and projections prepared by Meridian Capital Group with respect to future events, and these future events may or may not actually occur. Such estimates and projections reflect various assumptions concerning anticipated results. While Meridian Capital Group believes these assumptions are reasonable, there can be no assurance that any of these estimates and projections will be correct. Therefore, actual results may vary materially from these estimates and projections. Any square footage dimensions set forth are approximate.

# 153-27 JAMAICA AVENUE

JAMAICA, QUEENS | Between Parsons Boulevard and 153<sup>rd</sup> Street

RETAIL FOR LEASE



INTERIOR

## NOAM AZIZ

Director  
212.468.5984  
naziz@meridiancapital.com

## AARON HAROUNIAN

Associate  
212.468.5957  
aharounian@meridiancapital.com

## DAVID SIMHON

Associate  
212.468.5947  
dsimhon@meridiancapital.com



**MERIDIAN**  
RETAIL LEASING

All information supplied is from sources deemed reliable and is furnished subject to errors, omissions, modifications, removal of the listing from sale or lease, and to any listing conditions, including the rates and manner of payment of commissions for particular offerings imposed by Meridian Capital Group. This information may include estimates and projections prepared by Meridian Capital Group with respect to future events, and these future events may or may not actually occur. Such estimates and projections reflect various assumptions concerning anticipated results. While Meridian Capital Group believes these assumptions are reasonable, there can be no assurance that any of these estimates and projections will be correct. Therefore, actual results may vary materially from these estimates and projections. Any square footage dimensions set forth are approximate.

# 153-27 JAMAICA AVENUE

JAMAICA, QUEENS | Between Parsons Boulevard and 153<sup>rd</sup> Street

RETAIL FOR LEASE



NEIGHBORS

**NOAM AZIZ**  
 Director  
 212.468.5984  
 naziz@meridiancapital.com

**AARON HAROUNIAN**  
 Associate  
 212.468.5957  
 aharounian@meridiancapital.com

**DAVID SIMHON**  
 Associate  
 212.468.5947  
 dsimhon@meridiancapital.com



**MERIDIAN**  
 RETAIL LEASING

All information supplied is from sources deemed reliable and is furnished subject to errors, omissions, modifications, removal of the listing from sale or lease, and to any listing conditions, including the rates and manner of payment of commissions for particular offerings imposed by Meridian Capital Group. This information may include estimates and projections prepared by Meridian Capital Group with respect to future events, and these future events may or may not actually occur. Such estimates and projections reflect various assumptions concerning anticipated results. While Meridian Capital Group believes these assumptions are reasonable, there can be no assurance that any of these estimates and projections will be correct. Therefore, actual results may vary materially from these estimates and projections. Any square footage dimensions set forth are approximate.