

# 150

## LAWRENCE STREET DOWNTOWN BROOKLYN

Between Fulton & Willoughby Streets

RETAIL FOR LEASE

### APPROXIMATE SIZE

Ground Floor: 3,500 SF  
Second Floor: 4,000 SF

### ASKING RENT

Upon Request

### POSSESSION

Immediate

### TERM

Negotiable

### FRONTAGE

25 FT

### COMMENTS

- Brand-new Downtown Brooklyn development at base of 94-unit residential building
- High ceilings & 25 FT of prime frontage with private lobby
- Surrounded by top national retailers & fitness concepts
- Steps from major subways and constant foot traffic
- Flexible layouts ideal for QSR, café, restaurant, medical, wellness, fitness, bank, or salon
- All uses considered

### NEIGHBORS

Game Stop • Raising Cane's • 375 Chicken 'N Fries • Banana Republic • Pio Bagel • Foot Locker • Macy's • Sunglass Hut • Rumble • Solidcore • Chopt

### TRANSPORTATION



PROPERTY INFORMATION

### NOAM AZIZ

Senior Director  
212.468.5984  
naziz@meridiancapital.com

### STEPHEN LIGAMBI

Senior Associate  
212.468.5985  
sligambi@meridiancapital.com

### CARSON SHAHRABANI

Senior Associate  
212.468.5927  
cshahrabani@meridiancapital.com

### JOAQUIN CARRILLO

Associate  
212.468.5919  
jcarrillo@meridiancapital.com

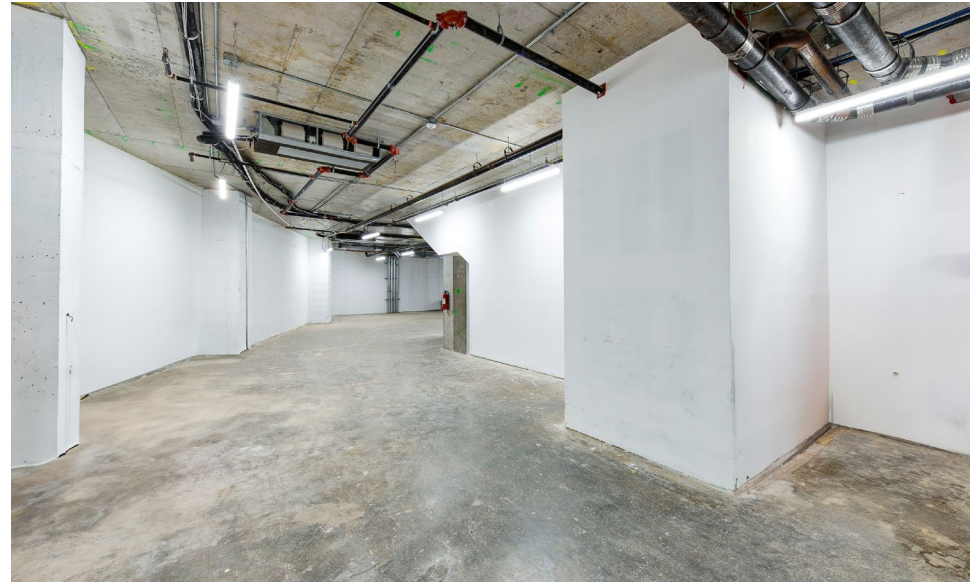


All information supplied is from sources deemed reliable and is furnished subject to errors, omissions, modifications, removal of the listing from sale or lease, and to any listing conditions, including the rates and manner of payment of commissions for particular offerings imposed by Meridian Capital Group. This information may include estimates and projections prepared by Meridian Capital Group with respect to future events, and these future events may or may not actually occur. Such estimates and projections reflect various assumptions concerning anticipated results. While Meridian Capital Group believes these assumptions are reasonable, there can be no assurance that any of these estimates and projections will be correct. Therefore, actual results may vary materially from these estimates and projections. Any square footage dimensions set forth are approximate.

# 150 LAWRENCE STREET

DOWNTOWN BROOKLYN | Between Fulton and Willoughby Streets

RETAIL FOR LEASE



INTERIOR | GROUND FLOOR

**NOAM AZIZ**  
Senior Director  
212.468.5984  
naziz@meridiancapital.com

**STEPHEN LIGAMBI**  
Senior Associate  
212.468.5985  
sligambi@meridiancapital.com

**CARSON SHAHRABANI**  
Senior Associate  
212.468.5927  
cshahrabani@meridiancapital.com

**JOAQUIN CARRILLO**  
Associate  
212.468.5919  
jcarrillo@meridiancapital.com



All information supplied is from sources deemed reliable and is furnished subject to errors, omissions, modifications, removal of the listing from sale or lease, and to any listing conditions, including the rates and manner of payment of commissions for particular offerings imposed by Meridian Capital Group. This information may include estimates and projections prepared by Meridian Capital Group with respect to future events, and these future events may or may not actually occur. Such estimates and projections reflect various assumptions concerning anticipated results. While Meridian Capital Group believes these assumptions are reasonable, there can be no assurance that any of these estimates and projections will be correct. Therefore, actual results may vary materially from these estimates and projections. Any square footage dimensions set forth are approximate.

# 150 LAWRENCE STREET

DOWNTOWN BROOKLYN | Between Fulton and Willoughby Streets

RETAIL FOR LEASE



INTERIOR | SECOND FLOOR

**NOAM AZIZ**  
Senior Director  
212.468.5984  
naziz@meridiancapital.com

**STEPHEN LIGAMBI**  
Senior Associate  
212.468.5985  
sligambi@meridiancapital.com

**CARSON SHAHRABANI**  
Senior Associate  
212.468.5927  
cshahrabani@meridiancapital.com

**JOAQUIN CARRILLO**  
Associate  
212.468.5919  
jcarrillo@meridiancapital.com



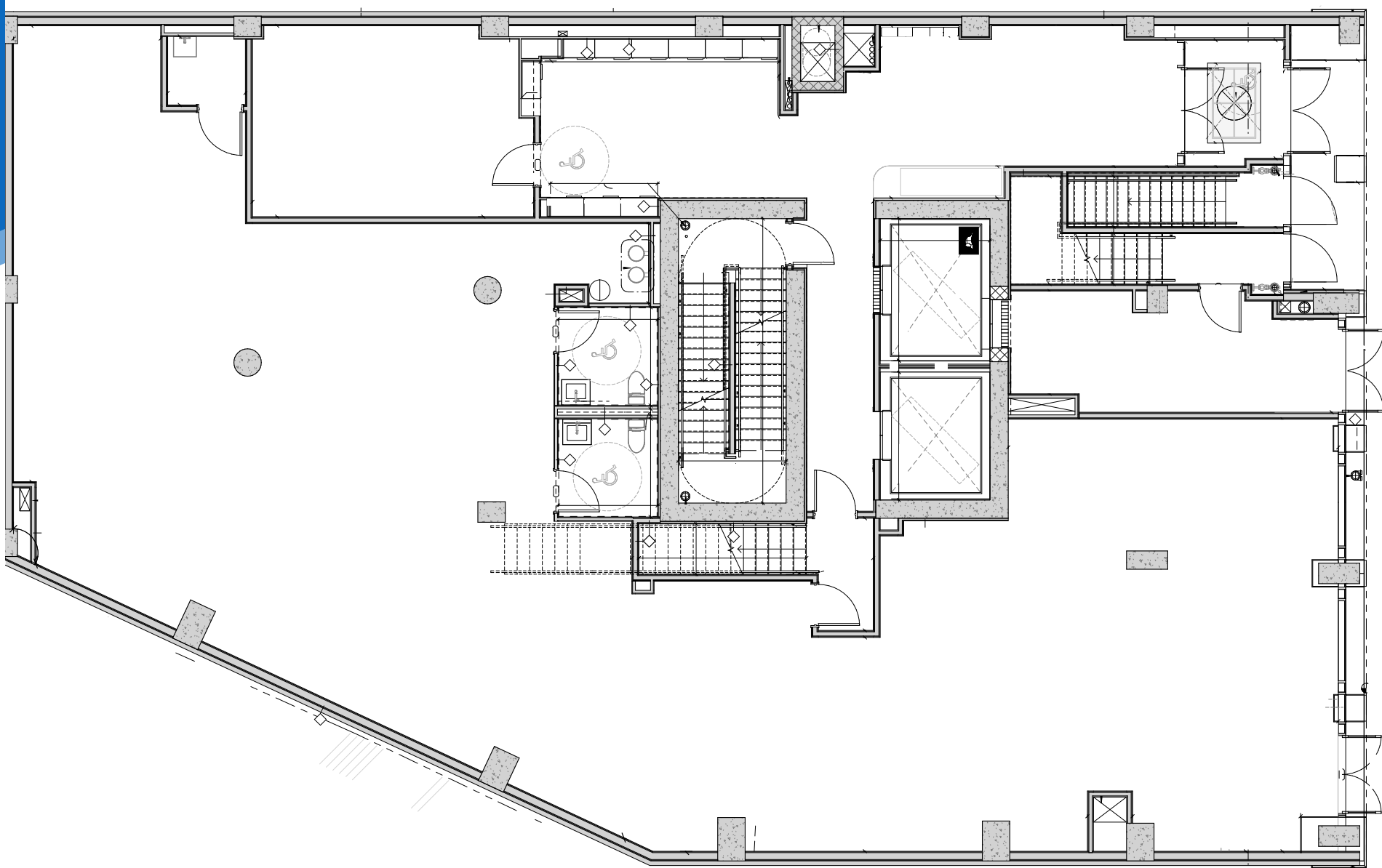
All information supplied is from sources deemed reliable and is furnished subject to errors, omissions, modifications, removal of the listing from sale or lease, and to any listing conditions, including the rates and manner of payment of commissions for particular offerings imposed by Meridian Capital Group. This information may include estimates and projections prepared by Meridian Capital Group with respect to future events, and these future events may or may not actually occur. Such estimates and projections reflect various assumptions concerning anticipated results. While Meridian Capital Group believes these assumptions are reasonable, there can be no assurance that any of these estimates and projections will be correct. Therefore, actual results may vary materially from these estimates and projections. Any square footage dimensions set forth are approximate.

# 150 LAWRENCE STREET

DOWNTOWN BROOKLYN | Between Fulton and Willoughby Streets

RETAIL FOR LEASE

FLOOR PLAN | GROUND FLOOR



LAWRENCE STREET

**NOAM AZIZ**  
Senior Director  
212.468.5984  
naziz@meridiancapital.com

**STEPHEN LIGAMBI**  
Senior Associate  
212.468.5985  
sligambi@meridiancapital.com

**CARSON SHAHRABANI**  
Senior Associate  
212.468.5927  
cshahrabani@meridiancapital.com

**JOAQUIN CARRILLO**  
Associate  
212.468.5919  
jcarrillo@meridiancapital.com



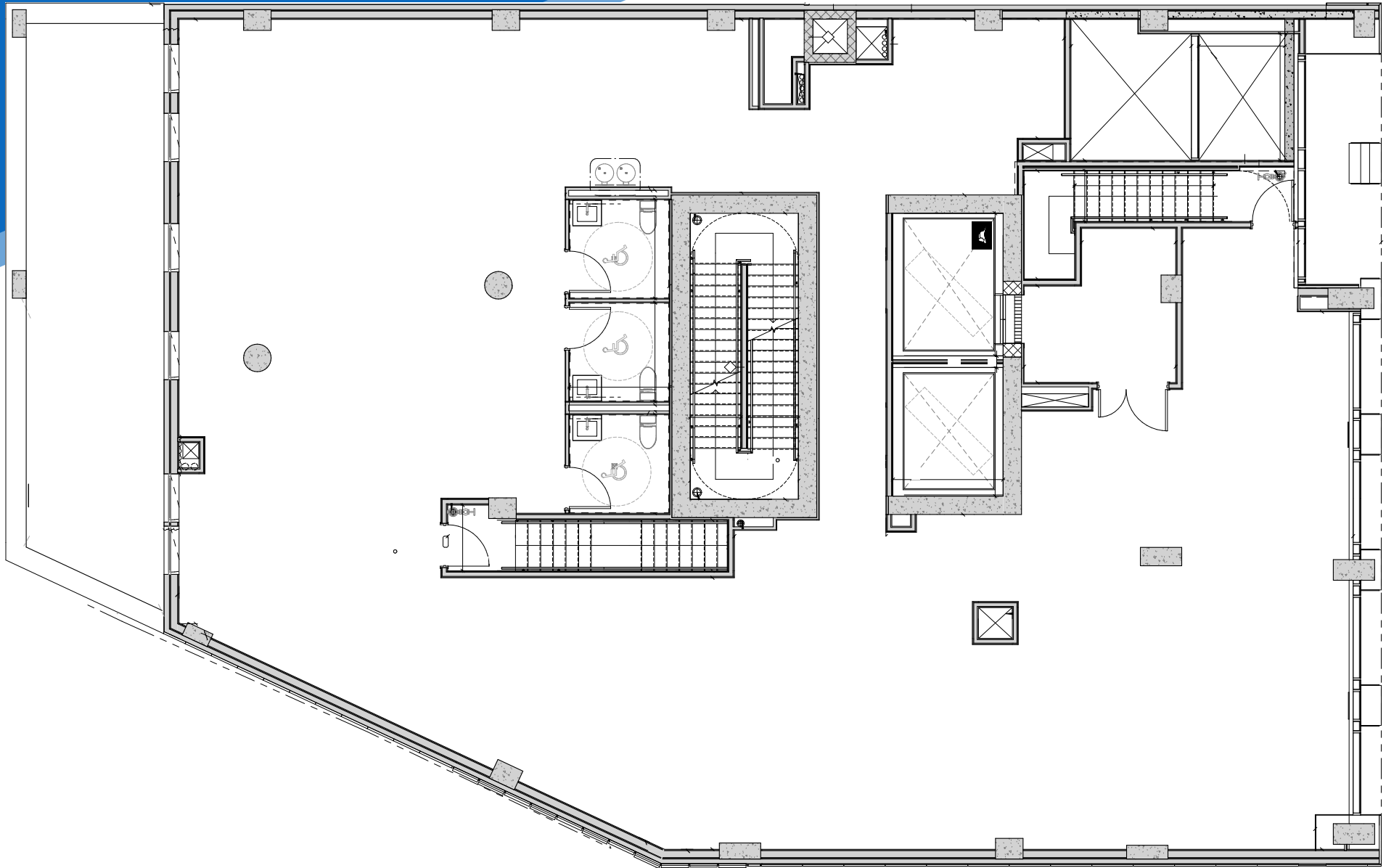
All information supplied is from sources deemed reliable and is furnished subject to errors, omissions, modifications, removal of the listing from sale or lease, and to any listing conditions, including the rates and manner of payment of commissions for particular offerings imposed by Meridian Capital Group. This information may include estimates and projections prepared by Meridian Capital Group with respect to future events, and these future events may or may not actually occur. Such estimates and projections reflect various assumptions concerning anticipated results. While Meridian Capital Group believes these assumptions are reasonable, there can be no assurance that any of these estimates and projections will be correct. Therefore, actual results may vary materially from these estimates and projections. Any square footage dimensions set forth are approximate.

# 150 LAWRENCE STREET

DOWNTOWN BROOKLYN | Between Fulton and Willoughby Streets

RETAIL FOR LEASE

FLOOR PLAN | SECOND FLOOR



LAWRENCE STREET

**NOAM AZIZ**  
Senior Director  
212.468.5984  
naziz@meridiancapital.com

**STEPHEN LIGAMBI**  
Senior Associate  
212.468.5985  
sligambi@meridiancapital.com

**CARSON SHAHRABANI**  
Senior Associate  
212.468.5927  
cshahrabani@meridiancapital.com

**JOAQUIN CARRILLO**  
Associate  
212.468.5919  
jcarrillo@meridiancapital.com



All information supplied is from sources deemed reliable and is furnished subject to errors, omissions, modifications, removal of the listing from sale or lease, and to any listing conditions, including the rates and manner of payment of commissions for particular offerings imposed by Meridian Capital Group. This information may include estimates and projections prepared by Meridian Capital Group with respect to future events, and these future events may or may not actually occur. Such estimates and projections reflect various assumptions concerning anticipated results. While Meridian Capital Group believes these assumptions are reasonable, there can be no assurance that any of these estimates and projections will be correct. Therefore, actual results may vary materially from these estimates and projections. Any square footage dimensions set forth are approximate.

# 150 LAWRENCE STREET

DOWNTOWN BROOKLYN | Between Fulton and Willoughby Streets

RETAIL FOR LEASE



NEIGHBORS

**NOAM AZIZ**  
Senior Director  
212.468.5984  
naziz@meridiancapital.com

**STEPHEN LIGAMBI**  
Senior Associate  
212.468.5985  
sligambi@meridiancapital.com

**CARSON SHAHRABANI**  
Senior Associate  
212.468.5927  
cshahrabani@meridiancapital.com

**JOAQUIN CARRILLO**  
Associate  
212.468.5919  
jcarrillo@meridiancapital.com



All information supplied is from sources deemed reliable and is furnished subject to errors, omissions, modifications, removal of the listing from sale or lease, and to any listing conditions, including the rates and manner of payment of commissions for particular offerings imposed by Meridian Capital Group. This information may include estimates and projections prepared by Meridian Capital Group with respect to future events, and these future events may or may not actually occur. Such estimates and projections reflect various assumptions concerning anticipated results. While Meridian Capital Group believes these assumptions are reasonable, there can be no assurance that any of these estimates and projections will be correct. Therefore, actual results may vary materially from these estimates and projections. Any square footage dimensions set forth are approximate.