

# 1474

**YORK AVENUE**  
UPPER EAST SIDE, NYC

Between East 78<sup>th</sup> & 79<sup>th</sup> Streets

RETAIL FOR LEASE



#### APPROXIMATE SIZE

700 SF + Basement

#### ASKING RENT

~~\$9,500/Month~~ - Reduced  
\$7,950/Month

#### POSSESSION

Immediate

#### TERM

Negotiable

#### FRONTAGE

15 FT

#### COMMENTS

- Prime location in the heart of York Avenue
- Formerly "Super Del Market"
- Vented - space can accommodate electric cooking
- Dense residential neighborhood with steady foot traffic

#### NEIGHBORS

Brooklyn Dumpling Shop • Salvo's Pizza Bar  
• Healthwise Pharmacy • Kobe Sushi • Pinky Nail Salon • Duane Reade • Chase Bank • The Ashford • Starbucks • Plug Uglies • Birch Coffee

#### TRANSPORTATION



#### NOAM AZIZ

Senior Director  
212.468.5984  
naziz@meridiancapital.com

#### CARSON SHAHRABANI

Senior Associate  
212.468.5927  
cshahrabani@meridiancapital.com

#### MAX FREUDENBERGER

Senior Associate  
212.468.5951  
mfreudenberger@meridiancapital.com



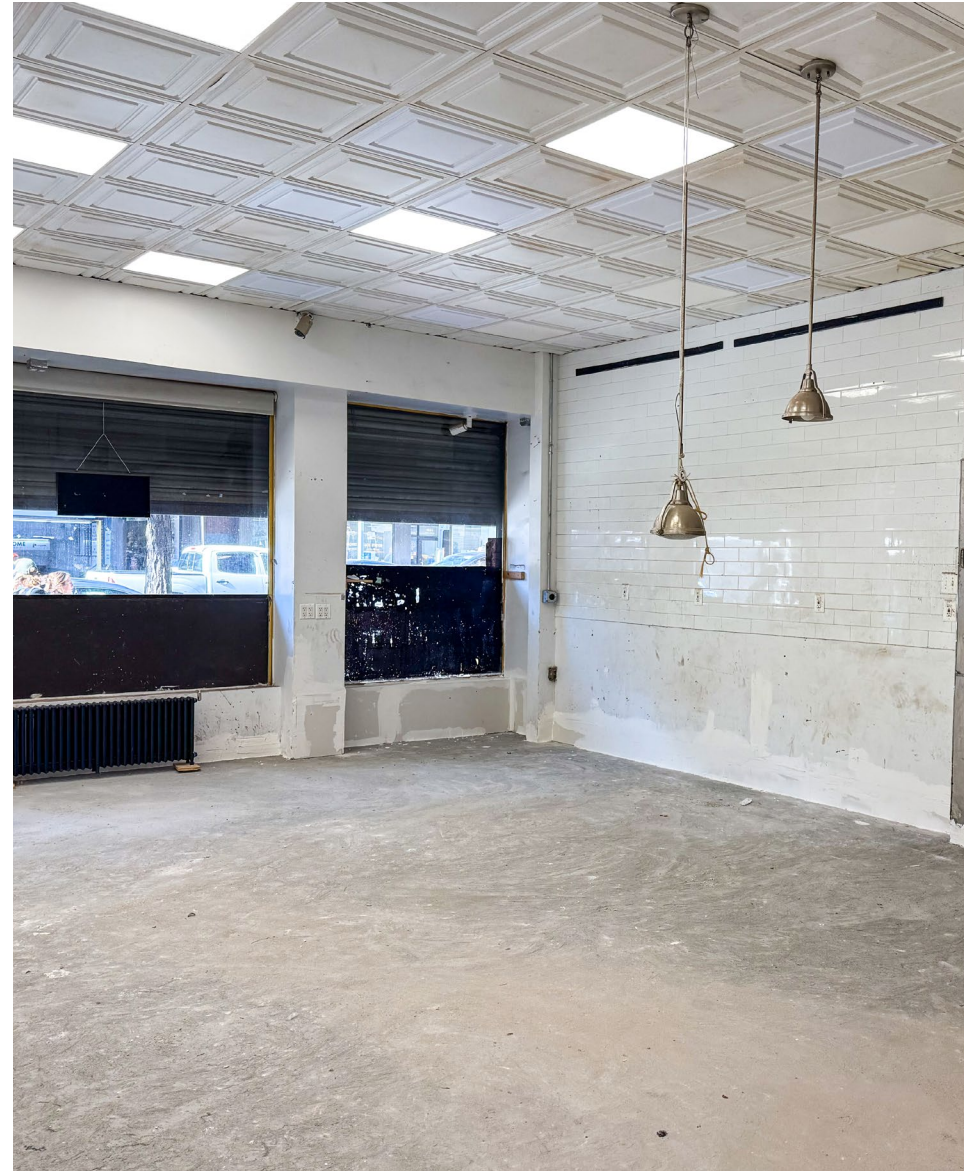
**MERIDIAN**  
RETAIL LEASING

All information supplied is from sources deemed reliable and is furnished subject to errors, omissions, modifications, removal of the listing from sale or lease, and to any listing conditions, including the rates and manner of payment of commissions for particular offerings imposed by Meridian Capital Group. This information may include estimates and projections prepared by Meridian Capital Group with respect to future events, and these future events may or may not actually occur. Such estimates and projections reflect various assumptions concerning anticipated results. While Meridian Capital Group believes these assumptions are reasonable, there can be no assurance that any of these estimates and projections will be correct. Therefore, actual results may vary materially from these estimates and projections. Any square footage dimensions set forth are approximate.

# 1474 YORK AVENUE

UPPER EAST SIDE, NYC | Between East 78<sup>th</sup> & 79<sup>th</sup> Streets

RETAIL FOR LEASE



INTERIOR

**NOAM AZIZ**  
Senior Director  
212.468.5984  
naziz@meridiancapital.com

**CARSON SHAHRABANI**  
Senior Associate  
212.468.5927  
cshahrabani@meridiancapital.com

**MAX FREUDENBERGER**  
Senior Associate  
212.468.5951  
mfreudenberger@meridiancapital.com



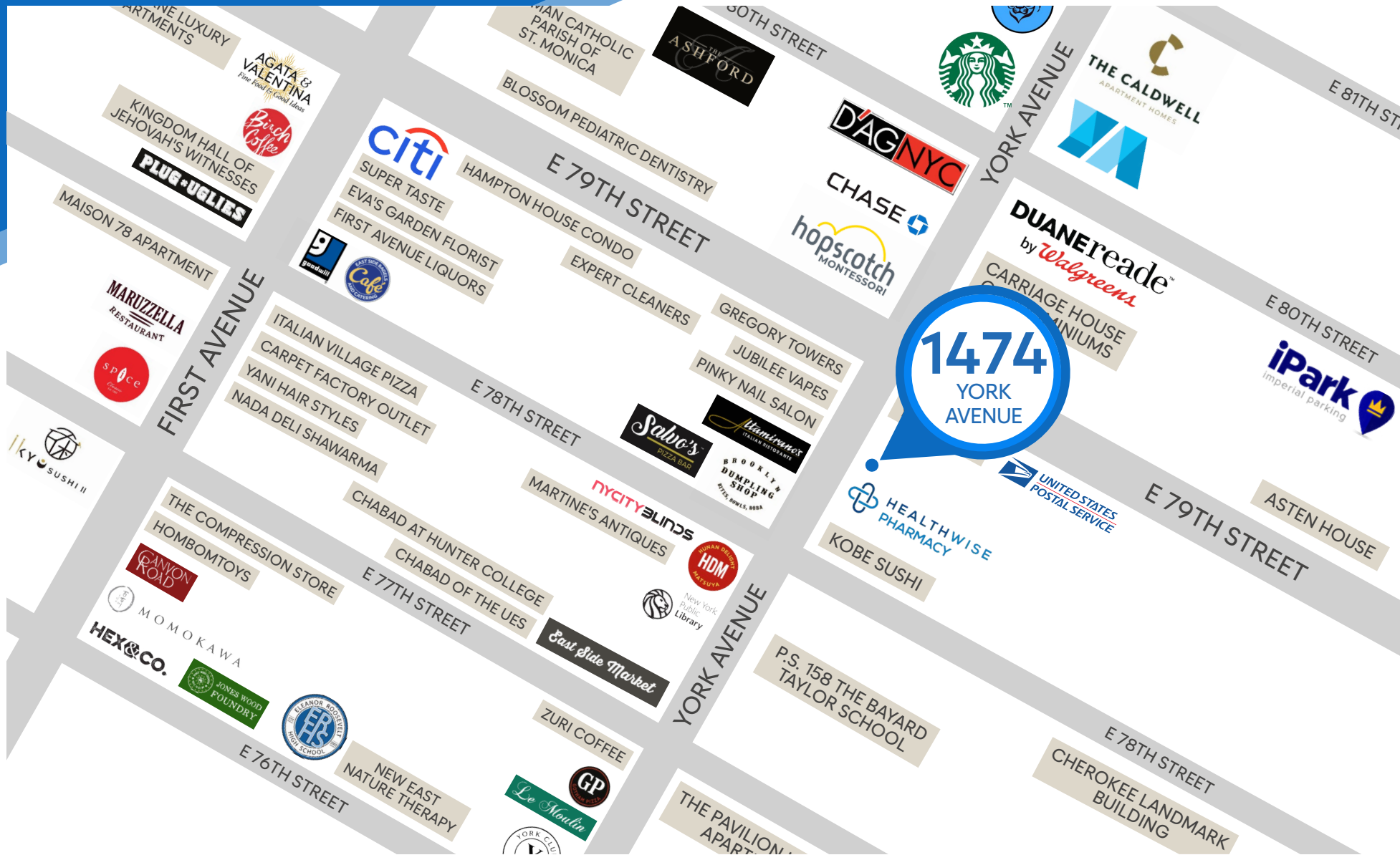
**MERIDIAN**  
RETAIL LEASING

All information supplied is from sources deemed reliable and is furnished subject to errors, omissions, modifications, removal of the listing from sale or lease, and to any listing conditions, including the rates and manner of payment of commissions for particular offerings imposed by Meridian Capital Group. This information may include estimates and projections prepared by Meridian Capital Group with respect to future events, and these future events may or may not actually occur. Such estimates and projections reflect various assumptions concerning anticipated results. While Meridian Capital Group believes these assumptions are reasonable, there can be no assurance that any of these estimates and projections will be correct. Therefore, actual results may vary materially from these estimates and projections. Any square footage dimensions set forth are approximate.

# 1474 YORK AVENUE

UPPER EAST SIDE, NYC | Between East 78<sup>th</sup> & 79<sup>th</sup> Streets

F RETAIL FOR LEASE



NEIGHBORS

**NOAM AZIZ**  
Senior Director  
212.468.5984  
naziz@meridiancapital.com

**CARSON SHAHRABANI**  
Senior Associate  
212.468.5927  
cshahrabani@meridiancapital.com

**MAX FREUDENBERGER**  
Senior Associate  
212.468.5951  
mfreudenberg@meridiancapital.com



**MERIDIAN**  
RETAIL LEASING

All information supplied is from sources deemed reliable and is furnished subject to errors, omissions, modifications, removal of the listing from sale or lease, and to any listing conditions, including the rates and manner of payment of commissions for particular offerings imposed by Meridian Capital Group. This information may include estimates and projections prepared by Meridian Capital Group with respect to future events, and these future events may or may not actually occur. Such estimates and projections reflect various assumptions concerning anticipated results. While Meridian Capital Group believes these assumptions are reasonable, there can be no assurance that any of these estimates and projections will be correct. Therefore, actual results may vary materially from these estimates and projections. Any square footage dimensions set forth are approximate.