

# 118

## WEST 27<sup>TH</sup> STREET CHELSEA, NYC

Between Sixth & Seventh Avenues

RETAIL FOR LEASE

### APPROXIMATE SIZE

4,000 SF + Basement

### ASKING RENT

~~\$20,000/Month~~ Reduced  
\$17,500/Month

### POSSESSION

Immediate

### TERM

5-10 Years

### FRONTAGE

25 FT

### COMMENTS

- Newly renovated space with brand-new glass storefront
- White-box retail ideal for fitness, wellness, gallery, or showroom
- Can be vented; gas in the building

### NEIGHBORS

Puppy Sphere • Bodyrok • The Wilson • Planet Fitness • Playa Bowls • Just Salad • Chipotle • Cava • Fairway • Gregory's Coffee • QQ Nails & Spa

### TRANSPORTATION

1 F M N Q R W 6 A C E



PROPERTY INFORMATION

### NOAM AZIZ

Senior Director  
212.468.5984  
naziz@meridiancapital.com

### AHUVA COHEN

Associate  
212.468.5987  
ahuva.cohen@meridiancapital.com

### DANIEL ZACAIM

Associate  
212.468.5910  
dzacaim@meridiancapital.com



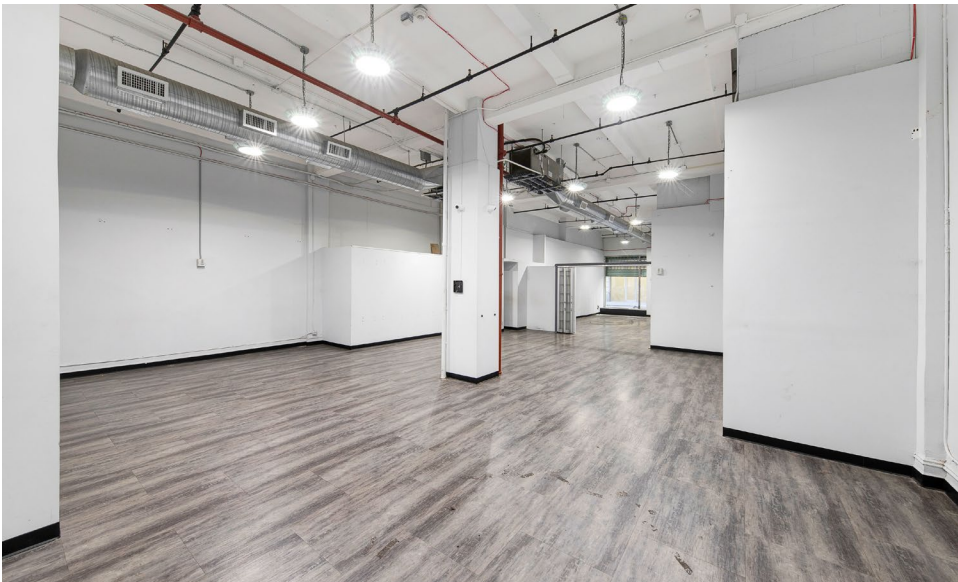
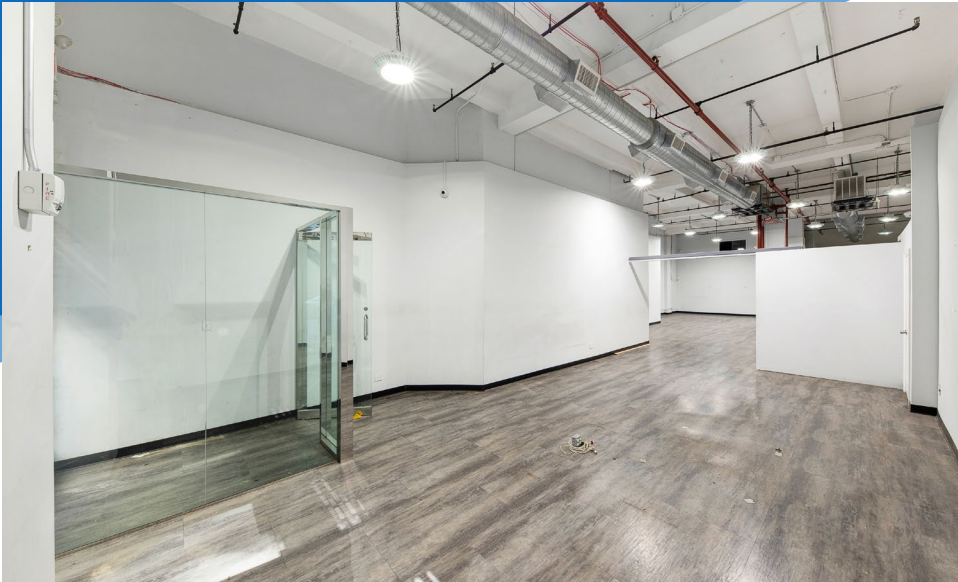
**MERIDIAN**  
RETAIL LEASING

All information supplied is from sources deemed reliable and is furnished subject to errors, omissions, modifications, removal of the listing from sale or lease, and to any listing conditions, including the rates and manner of payment of commissions for particular offerings imposed by Meridian Capital Group. This information may include estimates and projections prepared by Meridian Capital Group with respect to future events, and these future events may or may not actually occur. Such estimates and projections reflect various assumptions concerning anticipated results. While Meridian Capital Group believes these assumptions are reasonable, there can be no assurance that any of these estimates and projections will be correct. Therefore, actual results may vary materially from these estimates and projections. Any square footage dimensions set forth are approximate.

# 118 WEST 27<sup>TH</sup> STREET

CHELSEA, NYC | Between Sixth and Seventh Avenues

RETAIL FOR LEASE



INTERIOR

**NOAM AZIZ**  
Senior Director  
212.468.5984  
naziz@meridiancapital.com

**AHUVA COHEN**  
Associate  
212.468.5987  
ahuva.cohen@meridiancapital.com

**DANIEL ZACAIM**  
Associate  
212.468.5910  
dzacaim@meridiancapital.com



**MERIDIAN**  
RETAIL LEASING

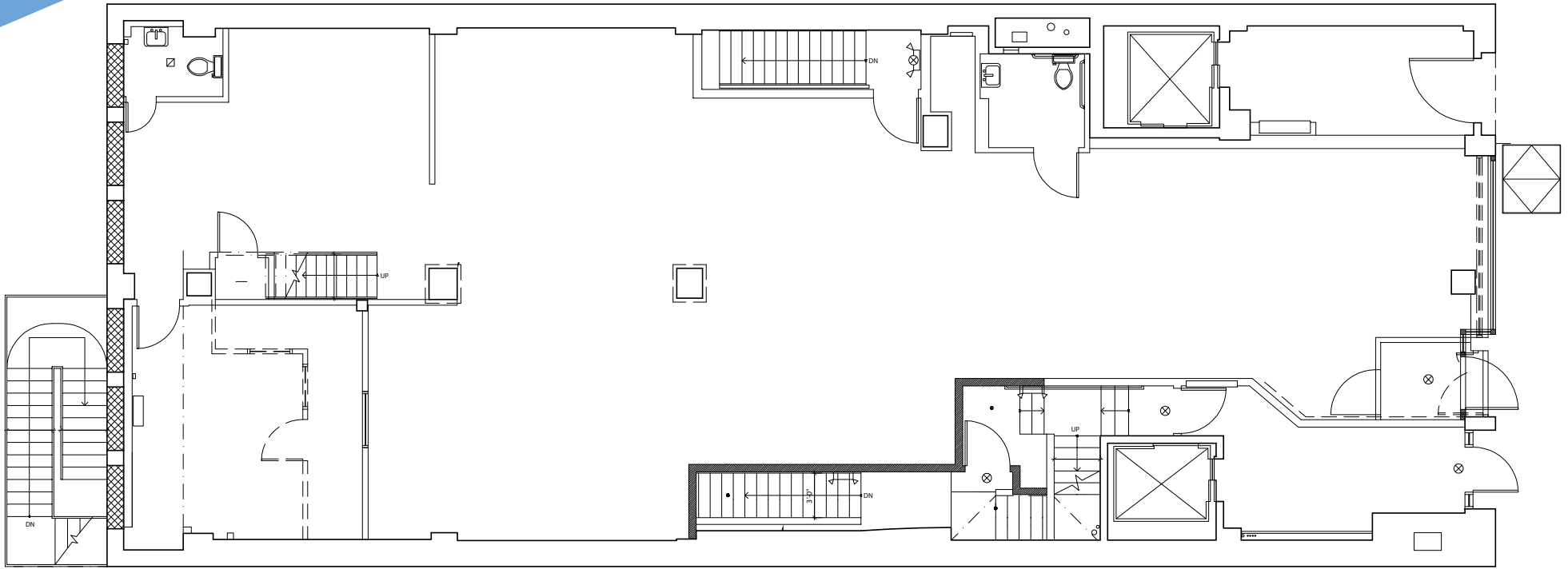
All information supplied is from sources deemed reliable and is furnished subject to errors, omissions, modifications, removal of the listing from sale or lease, and to any listing conditions, including the rates and manner of payment of commissions for particular offerings imposed by Meridian Capital Group. This information may include estimates and projections prepared by Meridian Capital Group with respect to future events, and these future events may or may not actually occur. Such estimates and projections reflect various assumptions concerning anticipated results. While Meridian Capital Group believes these assumptions are reasonable, there can be no assurance that any of these estimates and projections will be correct. Therefore, actual results may vary materially from these estimates and projections. Any square footage dimensions set forth are approximate.

# 118 WEST 27<sup>TH</sup> STREET

CHELSEA, NYC | Between Sixth and Seventh Avenues

RETAIL FOR LEASE

FLOOR PLAN | GROUND FLOOR



**NOAM AZIZ**  
Senior Director  
212.468.5984  
naziz@meridiancapital.com

**AHUVA COHEN**  
Associate  
212.468.5987  
ahuva.cohen@meridiancapital.com

**DANIEL ZACAIM**  
Associate  
212.468.5910  
dzacaim@meridiancapital.com



**MERIDIAN**  
RETAIL LEASING

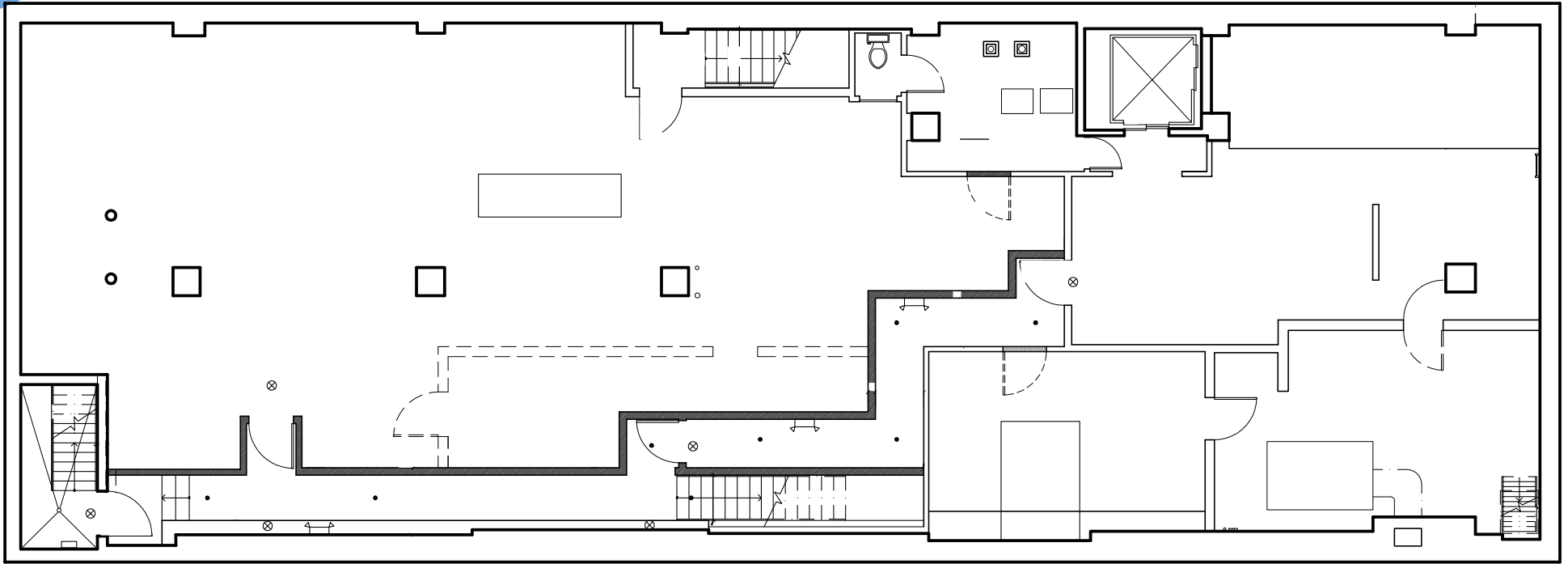
All information supplied is from sources deemed reliable and is furnished subject to errors, omissions, modifications, removal of the listing from sale or lease, and to any listing conditions, including the rates and manner of payment of commissions for particular offerings imposed by Meridian Capital Group. This information may include estimates and projections prepared by Meridian Capital Group with respect to future events, and these future events may or may not actually occur. Such estimates and projections reflect various assumptions concerning anticipated results. While Meridian Capital Group believes these assumptions are reasonable, there can be no assurance that any of these estimates and projections will be correct. Therefore, actual results may vary materially from these estimates and projections. Any square footage dimensions set forth are approximate.

# 118 WEST 27<sup>TH</sup> STREET

CHELSEA, NYC | Between Sixth and Seventh Avenues

RETAIL FOR LEASE

FLOOR PLAN | LOWER LEVEL



## NOAM AZIZ

Senior Director  
212.468.5984  
naziz@meridiancapital.com

## AHUVA COHEN

Associate  
212.468.5987  
ahuva.cohen@meridiancapital.com

## DANIEL ZACAIM

Associate  
212.468.5910  
dzacaim@meridiancapital.com



**MERIDIAN**  
RETAIL LEASING

All information supplied is from sources deemed reliable and is furnished subject to errors, omissions, modifications, removal of the listing from sale or lease, and to any listing conditions, including the rates and manner of payment of commissions for particular offerings imposed by Meridian Capital Group. This information may include estimates and projections prepared by Meridian Capital Group with respect to future events, and these future events may or may not actually occur. Such estimates and projections reflect various assumptions concerning anticipated results. While Meridian Capital Group believes these assumptions are reasonable, there can be no assurance that any of these estimates and projections will be correct. Therefore, actual results may vary materially from these estimates and projections. Any square footage dimensions set forth are approximate.

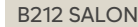
118 WEST 27<sup>TH</sup> STREET

CHELSEA, NYC | Between Sixth and Seventh Avenues

RETAIL FOR LEASE

SEVENTH AVENUE

SIXTH AVENUE



BANK OF AMERICA



W 27TH STREET



INDUSTRIOUS

THE CAPITOL PLAZA



W 26TH STREET



NEIGHBORS

SIXTH AVENUE

NOAM AZIZ  
Senior Director  
212.468.5984  
naziz@meridiancapital.com

AHUVA COHEN  
Associate  
212.468.5987  
ahuva.cohen@meridiancapital.com

DANIEL ZACAIM  
Associate  
212.468.5910  
dzacaim@meridiancapital.com



MERIDIAN  
RETAIL LEASING

All information supplied is from sources deemed reliable and is furnished subject to errors, omissions, modifications, removal of the listing from sale or lease, and to any listing conditions, including the rates and manner of payment of commissions for particular offerings imposed by Meridian Capital Group. This information may include estimates and projections prepared by Meridian Capital Group with respect to future events, and these future events may or may not actually occur. Such estimates and projections reflect various assumptions concerning anticipated results. While Meridian Capital Group believes these assumptions are reasonable, there can be no assurance that any of these estimates and projections will be correct. Therefore, actual results may vary materially from these estimates and projections. Any square footage dimensions set forth are approximate.