

# 115

## WEST 28<sup>TH</sup> STREET CHELSEA, NYC

Between Sixth & Seventh Avenues

RETAIL/OFFICE FOR LEASE

### APPROXIMATE SIZE

3<sup>rd</sup> Floor: 900 SF

~~5<sup>th</sup> Floor: 900 SF~~ - Leased

### ASKING RENT

\$40 PSF

### POSSESSION

Immediate

### TERM

Negotiable

### COMMENTS

- Clean space with beautiful exposed brick interiors
- Elevator building
- Both retail and office uses considered
- HVAC and bathrooms in place
- Great blend of residential, office, and tourist traffic
- Steps from multiple subway lines

### NEIGHBORS

Moxy Hotel • Marriot Bonvoy • Floral Designs •  
Barn Joo • Planthouse • La Noxe • Starbucks •  
Cava • Hot Yoga Chelsea • FIT • Playa Bowls

### TRANSPORTATION

**B D F M N Q R W 1**

### JACOB MAYER

Director  
212.468.5926  
jmayer@meridiancapital.com

### CRAIG ADAMSON

Associate  
212.468.5990  
cadamson@meridiancapital.com



**MERIDIAN**  
RETAIL LEASING

All information supplied is from sources deemed reliable and is furnished subject to errors, omissions, modifications, removal of the listing from sale or lease, and to any listing conditions, including the rates and manner of payment of commissions for particular offerings imposed by Meridian Capital Group. This information may include estimates and projections prepared by Meridian Capital Group with respect to future events, and these future events may or may not actually occur. Such estimates and projections reflect various assumptions concerning anticipated results. While Meridian Capital Group believes these assumptions are reasonable, there can be no assurance that any of these estimates and projections will be correct. Therefore, actual results may vary materially from these estimates and projections. Any square footage dimensions set forth are approximate.

# 115 WEST 28<sup>TH</sup> STREET

CHELSEA, NYC | Between Sixth and Seventh Avenues

RETAIL/OFFICE FOR LEASE



INTERIOR | 3<sup>RD</sup> FLOOR

## JACOB MAYER

Director  
212.468.5926  
jmayer@meridiancapital.com

## CRAIG ADAMSON

Associate  
212.468.5990  
cadamson@meridiancapital.com



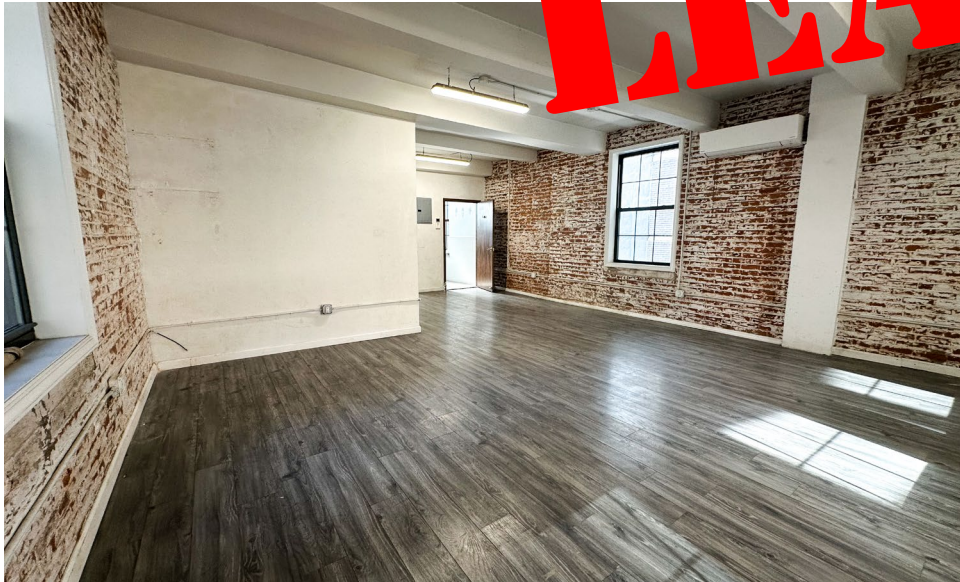
**MERIDIAN**  
RETAIL LEASING

All information supplied is from sources deemed reliable and is furnished subject to errors, omissions, modifications, removal of the listing from sale or lease, and to any listing conditions, including the rates and manner of payment of commissions for particular offerings imposed by Meridian Capital Group. This information may include estimates and projections prepared by Meridian Capital Group with respect to future events, and these future events may or may not actually occur. Such estimates and projections reflect various assumptions concerning anticipated results. While Meridian Capital Group believes these assumptions are reasonable, there can be no assurance that any of these estimates and projections will be correct. Therefore, actual results may vary materially from these estimates and projections. Any square footage dimensions set forth are approximate.

115 WEST 28<sup>TH</sup> STREET

CHELSEA, NYC | Between Sixth and Seventh Avenues

RETAIL/OFFICE FOR LEASE



INTERIOR | 5<sup>TH</sup> FLOOR

JACOB MAYER

Director  
212.468.5926  
jmayer@meridiancapital.com

CRAIG ADAMSON

Associate  
212.468.5990  
cadamson@meridiancapital.com



**MERIDIAN**  
RETAIL LEASING

All information supplied is from sources deemed reliable and is furnished subject to errors, omissions, modifications, removal of the listing from sale or lease, and to any listing conditions, including the rates and manner of payment of commissions for particular offerings imposed by Meridian Capital Group. This information may include estimates and projections prepared by Meridian Capital Group with respect to future events, and these future events may or may not actually occur. Such estimates and projections reflect various assumptions concerning anticipated results. While Meridian Capital Group believes these assumptions are reasonable, there can be no assurance that any of these estimates and projections will be correct. Therefore, actual results may vary materially from these estimates and projections. Any square footage dimensions set forth are approximate.



NEIGHBORS

MAVERICK Triple Crown Ale House  
 W 28TH STREET  
 Conference Center  
 Justin Witwick  
 FIT  
 W 27TH STREET  
 FIT  
 W 26TH STREET  
 BLANK STREET  
 BANK OF AMERICA  
 CHIP CITY

DUANEreade by Walgreens FRAGRANCE INTIMO La Chilaqueria Cambria Hotel New York moxy HOTELS HYATT  
 W 28TH STREET  
 La Noxe PLANTER RESOURCE floral design Tasting Art TROPICAL PLANTS & ORCHIDS INC McDonald's  
 Starbucks COLLITON STUDIO INTERNATIONAL GARDEN INC  
 CAVA CHASE IMAGE MEDIA LAB FIT CLUB FedEx Hot Yoga Chelsea Mala Panda The Buzz Wines & Liquors  
 W 27TH STREET  
 TRAVA BONES GO BEYOND planet fitness THE WILSON COCKTAILS & SEAFOOD FIT HIT MAKE AN IMPACT Puppy Sphere BODYROK NANGMAN  
 Metro Cafe WAYBACK BURGERS just salad FedEx DUANEreade by Walgreens Qwench Juice Bar citi  
 DUNKIN' CHIPOTE MEXICAN GRILL Sid Gold's REQUEST ROOM CROMPTON ALLIANCE THE CAULDRON CO. Holiday Inn AN IHG HOTEL 775 Nails GREGORYS COFFEE  
 Swedish Institute College of Health Sciences  
 W 26TH STREET  
 DIG. SAND BAR Hilton Thrift NYC Novum Garage Space Vintage NYC SEMINAR AND CONFERENCE CENTER Indigo Coffee Co.  
 SEVEN GRAMS - CAFE Rock Star Crystals Laura Bohn Design getir LA MANO POTTERY Sunac Fancy Food  
 NYU Langone Health DOLMA'S SPA PETER HURLEY NEW YORK • LOS ANGELES

BARN JOO Planthouse  
 W 28TH STREET  
 i-TASTE Chahine Sportswear II Corporation EM HANDBAG EM Handbag Company Inc.  
 BANK OF AMERICA 7-ELEVEN COSHICO  
 Citizens PATENT COFFEE IZAKAYA 時 SEAOUL OSCAR WILDE THE SEN HOT  
 W 27TH STREET  
 Success M8 Hidden gem bar MAS SIVE MEDIA  
 Starbucks Double Dragons Digitalmat  
 THE CAPITOL GREY DOG  
 greybar & restaurant FLATIRON ROOM  
 W 26TH STREET  
 KeyMe LOCKSMITHS THE IVORY PEACOCK HILL COUNTRY  
 Towa

JACOB MAYER  
 Director  
 212.468.5926  
 jmayer@meridiancapital.com

CRAIG ADAMSON  
 Associate  
 212.468.5990  
 cadamson@meridiancapital.com



MERIDIAN  
 RETAIL LEASING

All information supplied is from sources deemed reliable and is furnished subject to errors, omissions, modifications, removal of the listing from sale or lease, and to any listing conditions, including the rates and manner of payment of commissions for particular offerings imposed by Meridian Capital Group. This information may include estimates and projections prepared by Meridian Capital Group with respect to future events, and these future events may or may not actually occur. Such estimates and projections reflect various assumptions concerning anticipated results. While Meridian Capital Group believes these assumptions are reasonable, there can be no assurance that any of these estimates and projections will be correct. Therefore, actual results may vary materially from these estimates and projections. Any square footage dimensions set forth are approximate.